

Directions for placing the Prints.

Volume the First.

Plate 1 to face the Title

2 to face page 17

3 - 77

4 - 123

5 - 132

6 - 139

7 - 150

8 - 182

9 - 184

10 - 188

11 - 190

12 - 194

13 - 196

14 - 198

15 - 200

16 - 202

17 - 204

18 - 206

19 - 208

20 - 210

Plate

Plate 21 to face page 214

22	-	216
23	-	218
24	-	228
25	-	234
26	-	238
27	-	244
28	-	248
29	-	252
30	-	254
31	-	256
32	-	258
33	-	260
34	-	262
35	-	268
36	-	270
37	-	274

Volume the Second.

38	-	4
39	-	6
40	-	18
41	-	20
42	-	28
43	-	32
44	-	34
45	-	36

Plate

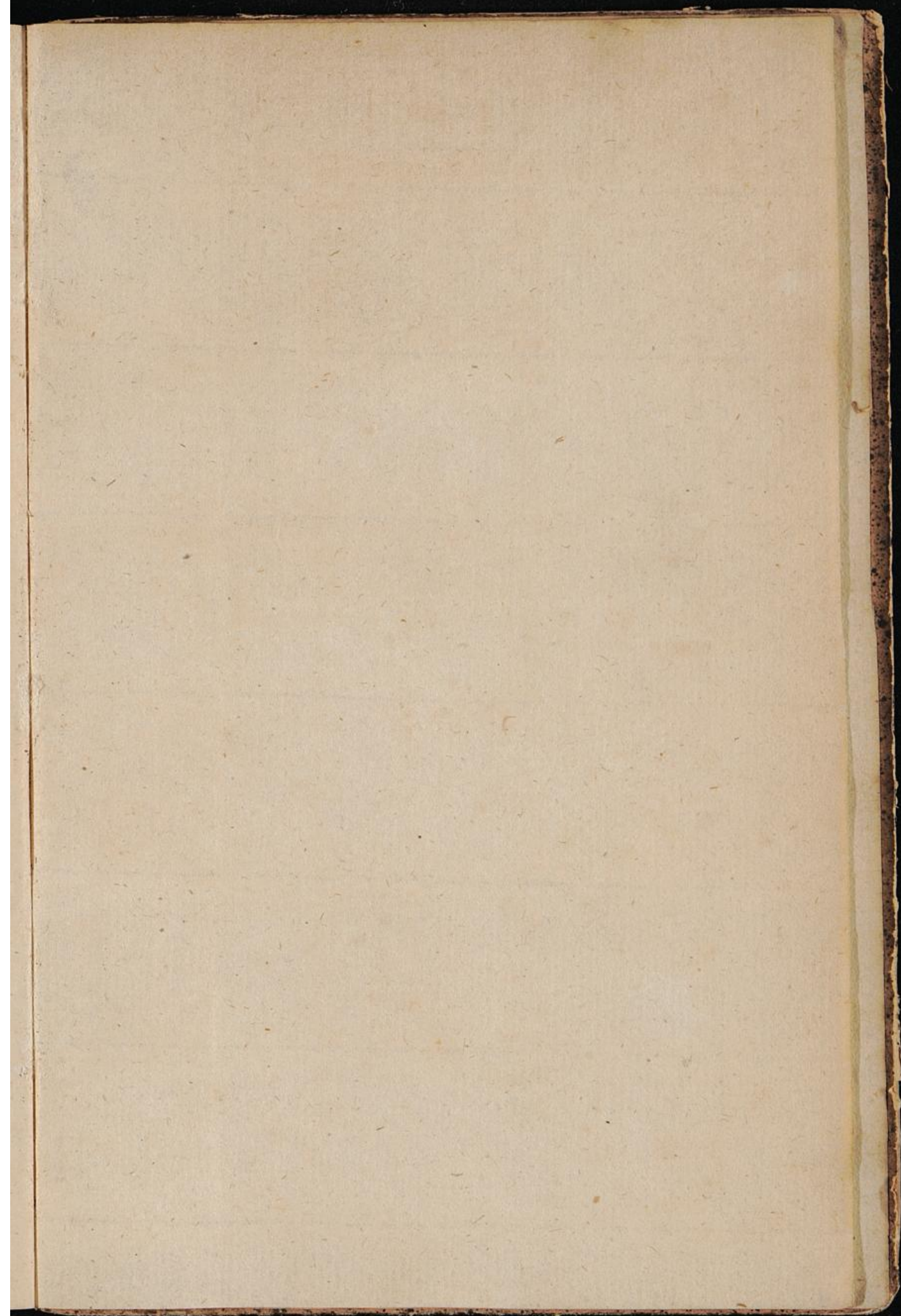
Plate 46	to face	page 38
47	-	46
48	-	52
49	-	62
50	-	64
51	-	84
52	-	86
53	-	92
54	-	94
55	-	102
56	-	106
57	-	108
58	-	112
59	-	130
60	-	132
61	-	134
62	-	140
63	-	142
64	-	146
65	-	154
66	-	156
67	-	160
68	-	166
69	-	168
70	-	172
71	-	174
72	-	176
73	-	178

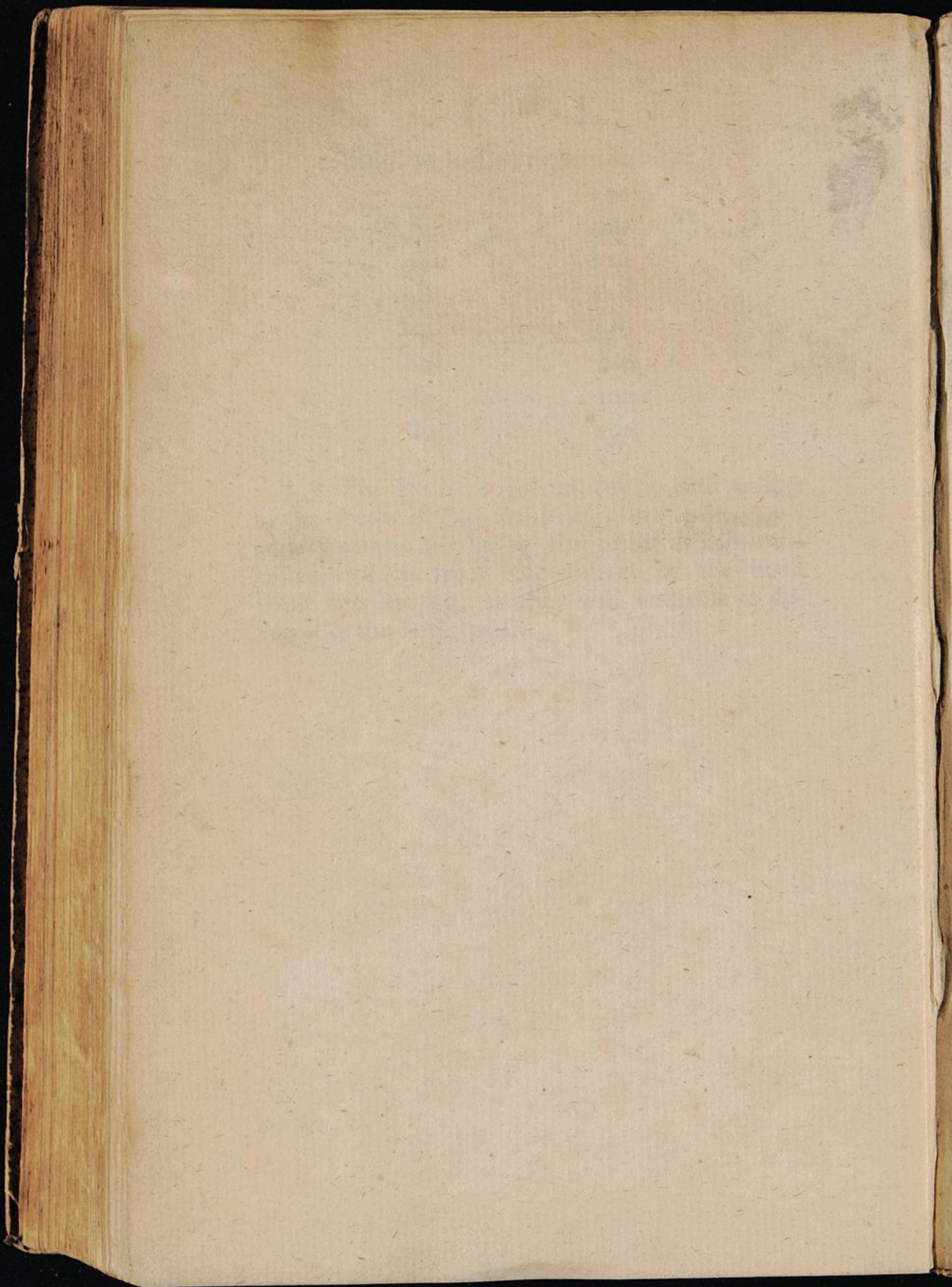
Plate

Plate 74 to face page	182
75 - - -	184
76 - - -	200
77 - - -	214
78 - - -	216
79 - - -	218
80 - - -	220
81 - - -	222
82 - - -	232

* * * The Binder is desired, not to bind up any of the sheets if they are damp; and to be particularly careful in placing the prints as above directed, which must not remain in the book while it is beating, as they will be liable to damage by the letter-press.

182	-	00
184	-	10
200	-	20
214	-	30
216	-	40
218	-	50
220	-	60
222	-	70
232	-	80
232	-	90
232	-	00
232	-	10
232	-	20
232	-	30
232	-	40
232	-	50
232	-	60
232	-	70
232	-	80
232	-	90
232	-	00







Inches

Centimetres

TIFFEN Color Control Patches

© The Tiffen Company, 2007

Blue

Cyan

Green

Yellow

Red

Magenta

White

3/Color

Black