

Quis dicit qd thōs accipit eētia p eo qd recipit eē
 et albertus p eo qd dat eē Cuz i qmto tītatu de ente et
 eētia. qōe. utz in sbūe sepāt sit oīs simplicitas: tū vz
 terqz accipit eētia p nā spēficā / siue forma: Eētia
 si albtū (puto me lagisse) ē forz pūe put ē in mā / an
 aduātū accipitū: Thōs in videt loq de eē ex nte Cuz
 i textu de ente et eētia. tītatu 2o. qmōi q nō. folio
 161. X. 7: et ex qnti dicit q eētia se liz vt mā / l pō / l
 qd est / ad eē ex nte: Albtū vō fortassis loqz de eē eētie.
 ut salte alit caput eē ex nte / qd thomas. utz in pñō solu
 tiōis qōis de opōe eē et eētie. fol. 110. d. 1. et fol. p
 redenti. X. Et ex qnti dicit q eētia by se pferat in
 āgel eētia) ut forz / actū / seu quo est. utz in solutioe p dūta
 [fol. 110. II.] (In āgel nō ē qōe ex mā et forz. tū ex q
 est. et qd est: et ex actu et pō): In hoc pōdat q dūdo
 Cartz et pō. pō d: illud quod recipit eē ab alio: et sic dicit
 in ordie ad causa efficiētē. utz in textu pōtō [fo. 161. X.]
 Et in 2 pte sūme albtū / tītatu 2o. qōe 6o. mēbro pmo
 In solutioe ad 3ā pñicula obiectōis qmē [fo. 94. 9.]
 Thōs d: i āgelo. pōm / siue qd est eē / eētia: actū nō / siue
 quo est eē / eētie eē ex nte: Albtū vō pōm siue qd est
 pōit (possibile / qd de se nichil est) utz in solutioe p
 dūta III: aut potis (qd est ex nichilo / siue pō nichil) utz
 in albtō vbi supra Ad 2ā pñicula II. Et tītatu 4o / qōe
 13. mēbro. i. In solutioe qnti argumētū. fol. 111. x. Actū siue
 quo est pōit form / siue eētia: Requie eētia i 2 pte

sume alberti / tñtñy .ii. q. 3. / mēb. 3. / arti. 2. / qōe inde
tali .ii. in soloe 2. arg. de ee et eētia / fo. 12. X. 13

Thomiste et albiste gformit / ut in videtur dicit
q requirit q mediū sit illūatū. Et est gformit dicit
q lumē requirit ad colozē: s; Thomiste dicit / ut in vi-
detur q lumē sine luminositat ignis sufficit ad gsti-
tutionē colois. et ē qd intrinsecū colorato: s; Albiste dicit
/ ut patet q ad colozē requirit lumē extrinsecū / colorato /
supplet: et exis sū de eētia colois / s; nō colorati: qz nō
est extrinsecū colorato: Thomiste dicit q spēs
et q nō fluūt in aiām ab īpāia sepāta / in qdā qōe
in 3^m de aiā / C. excerpto nro. fo. 22. 10 / S; p itelligē-
tia sepāta itelligit aiā / s; aiā sepāta / q itēm agētē
respirū sui itē 9 pō: Albiste nō dicit q fluūt ab īpāia
sepāta in aiām: s; p illa itelligētia sepāta itelligit
itellētū agētē respirū sui itē 9 pō: S; qd ē tū ibalis
discordia / ut in videtur. Alb. i. qmētē in 3^m de aiā
qōe p mād agēs quēment nōiet ars / lumē / itē. i. de-
clātōe maioris. J. 6. Propt causalitātē actiua. i. sine:

ΑΑΑ ΑΓΓ ΓΑΑΑΑ ΑΓΑΑΑ ΑΓΑΑΑ ΑΓΑΑΑ
hōie mortuo / forū cadaueris intrat mād dispositā actiua. q.
s; nō est itequēment: aut qd nām est q actiua sint
sine forū s; bali in īstati: qz īstās sive nūr / nō ē tps:
forū pīs p gstructionē itūstīua / q est met pō. ut
aiā pō hōis: p gstructionē tūstīua / q iforū pte. ut
aiā iformat corpō: forū totig / met totū. ut humani-
tas p gstructionē itūstīua: forū totig p gstructionē msi-

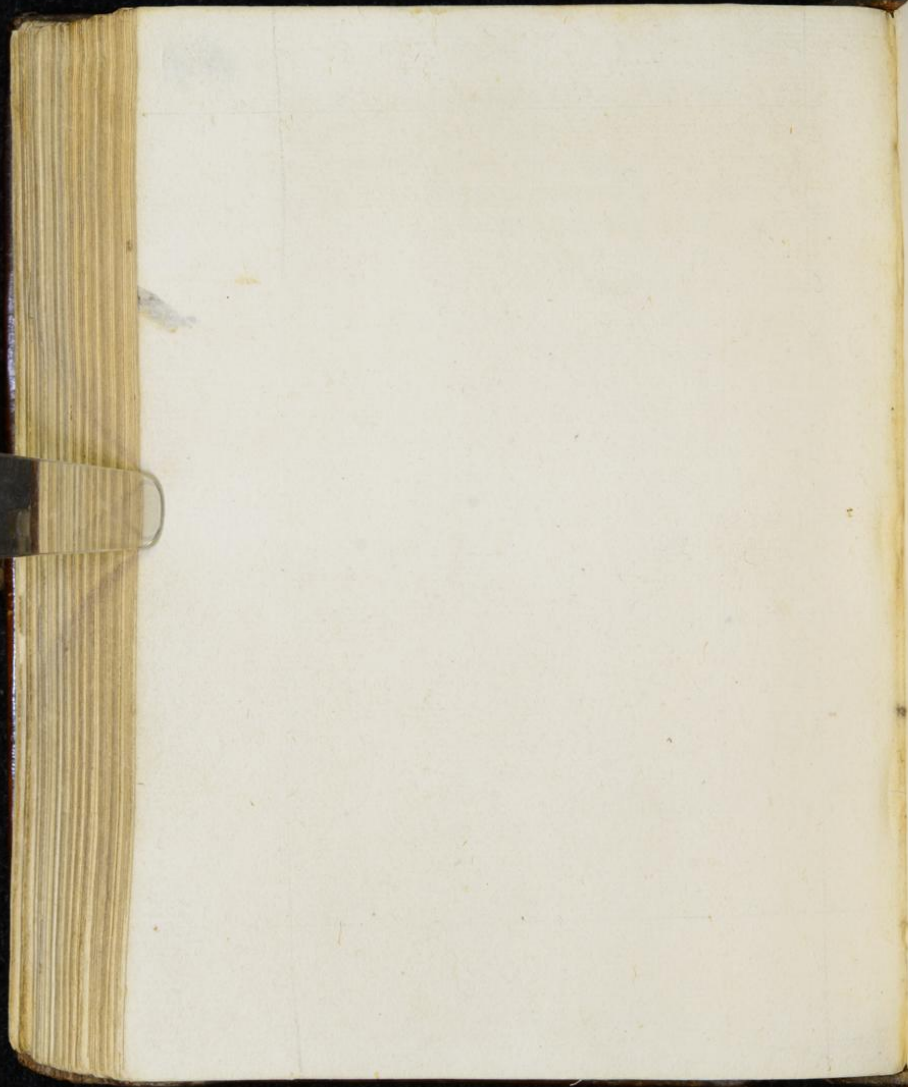
tuā iformas totū. ut humanitas iformat sorte: — 1:
 mā p̄t eodē mō d̄: Ut corp̄ hoc / l' corp̄ petr̄: Illatio
 totig. sorte: tal' d̄: suppositū: In am̄ibg. Albedo / forma
 p̄t. Albu fōr totig generatue: abstractiue albedineitas:
 Hec sup̄fices / mā p̄t: Hec albu / mā totig:



The page contains extremely faint, illegible text, likely bleed-through from the reverse side of the leaf. The text is arranged in several horizontal lines across the page, but the characters are too light to be discernible. The paper is aged and yellowed, with some minor staining and foxing visible.

159.

159.



Fragment of text from the adjacent page, including a red initial 'C' and some illegible script.