

*C. 31. b.*

*b.*

The manuscript page is heavily stained and discolored. It features several red horizontal lines. Faint musical notation is visible, particularly at the top right. Large red initials are scattered across the page: 'H' in the upper middle, 'E' in the middle left, 'P' in the middle right, and 'S' in the lower middle. A small red 'p.' is located at the top right. The paper shows significant water damage and foxing.



Handwritten musical notation on aged, stained paper. The notation consists of square neumes on red four-line staves. The text "est in be ru" is visible at the top. A large red initial "C" is present on the left side. The paper shows significant water damage and discoloration.

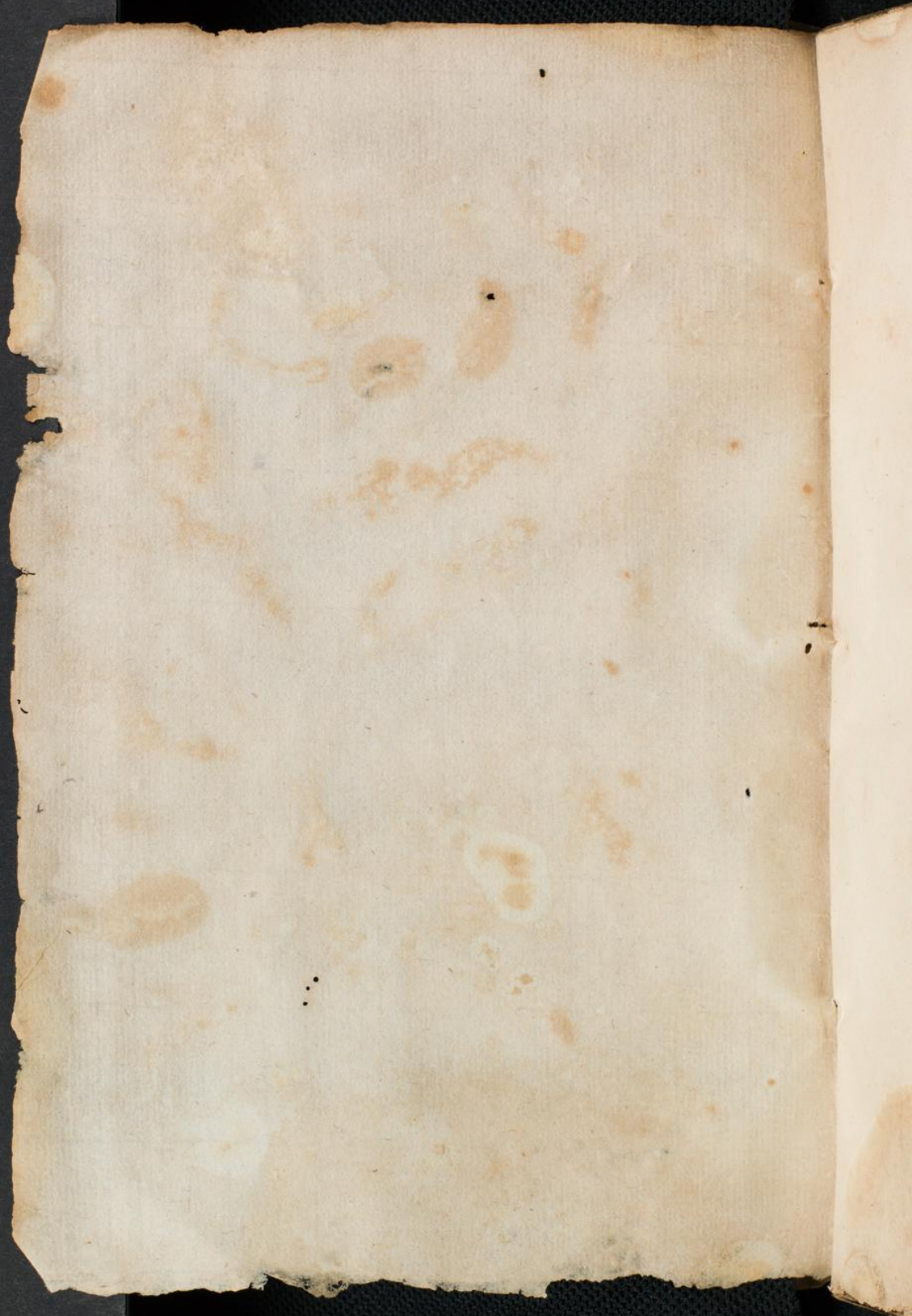
Handwritten musical notation on aged, stained paper. A large red initial "C" is visible on the right side. The paper shows significant water damage and discoloration.

C 31



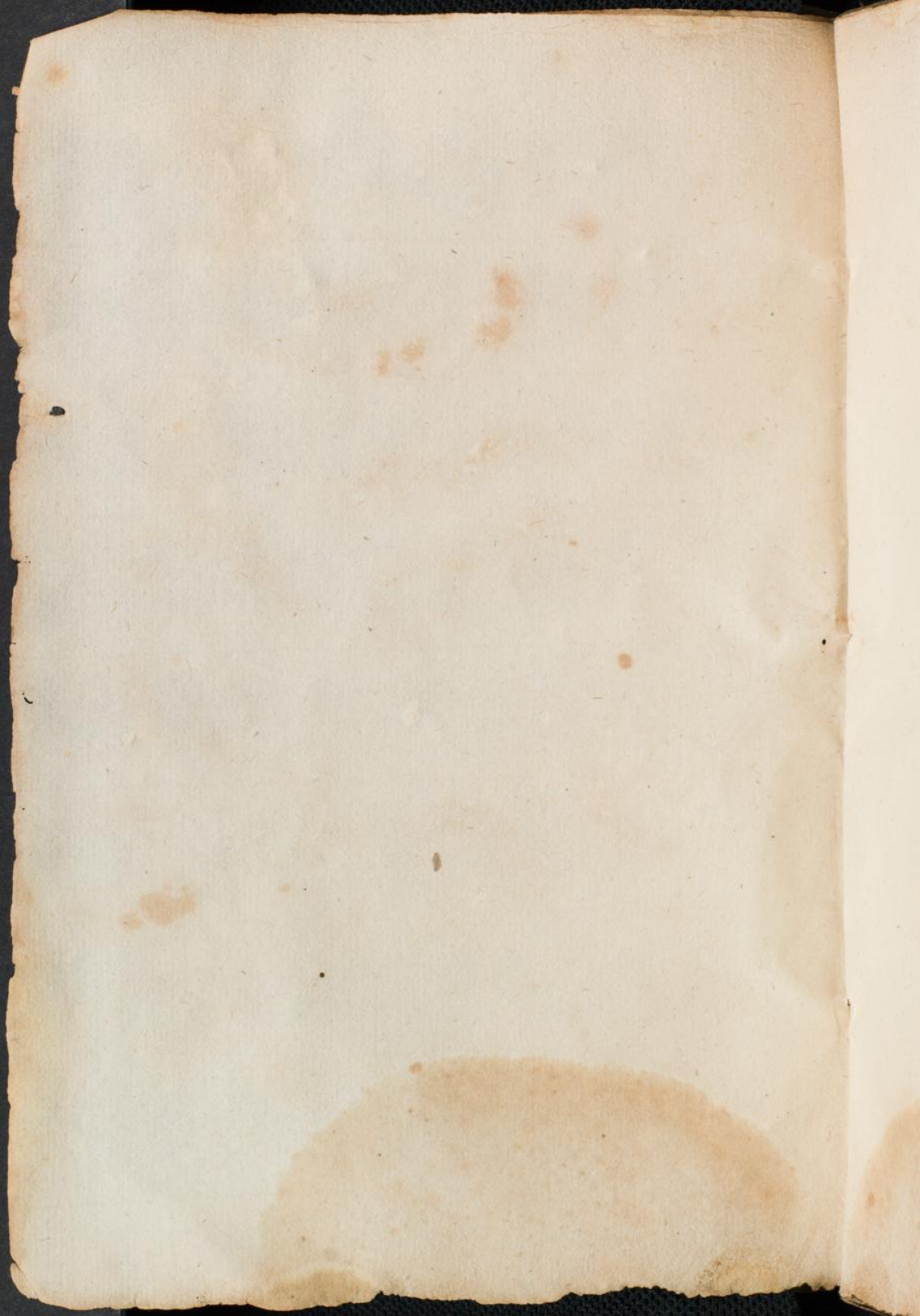
I

C 31, b.



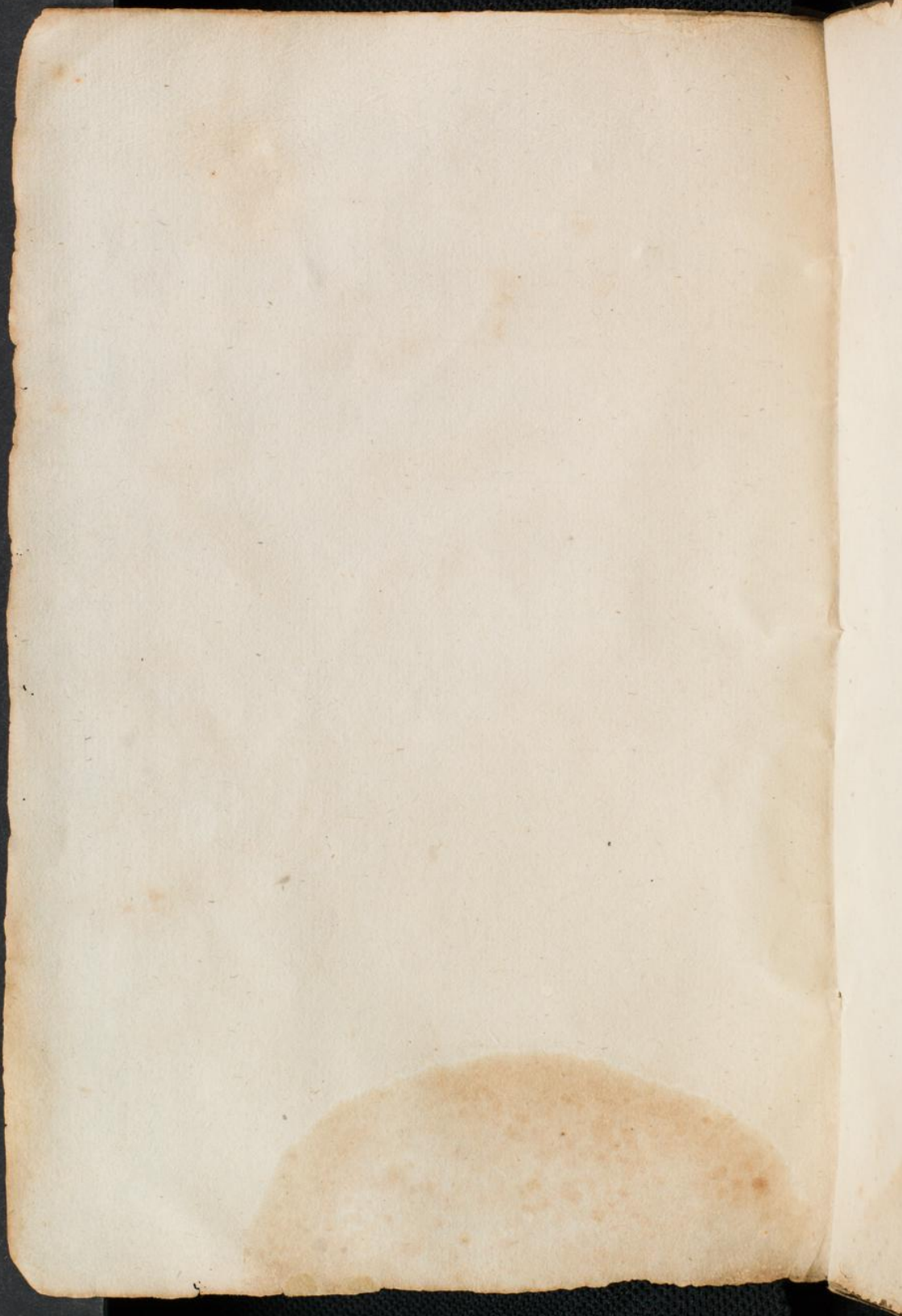














0318

IV

