

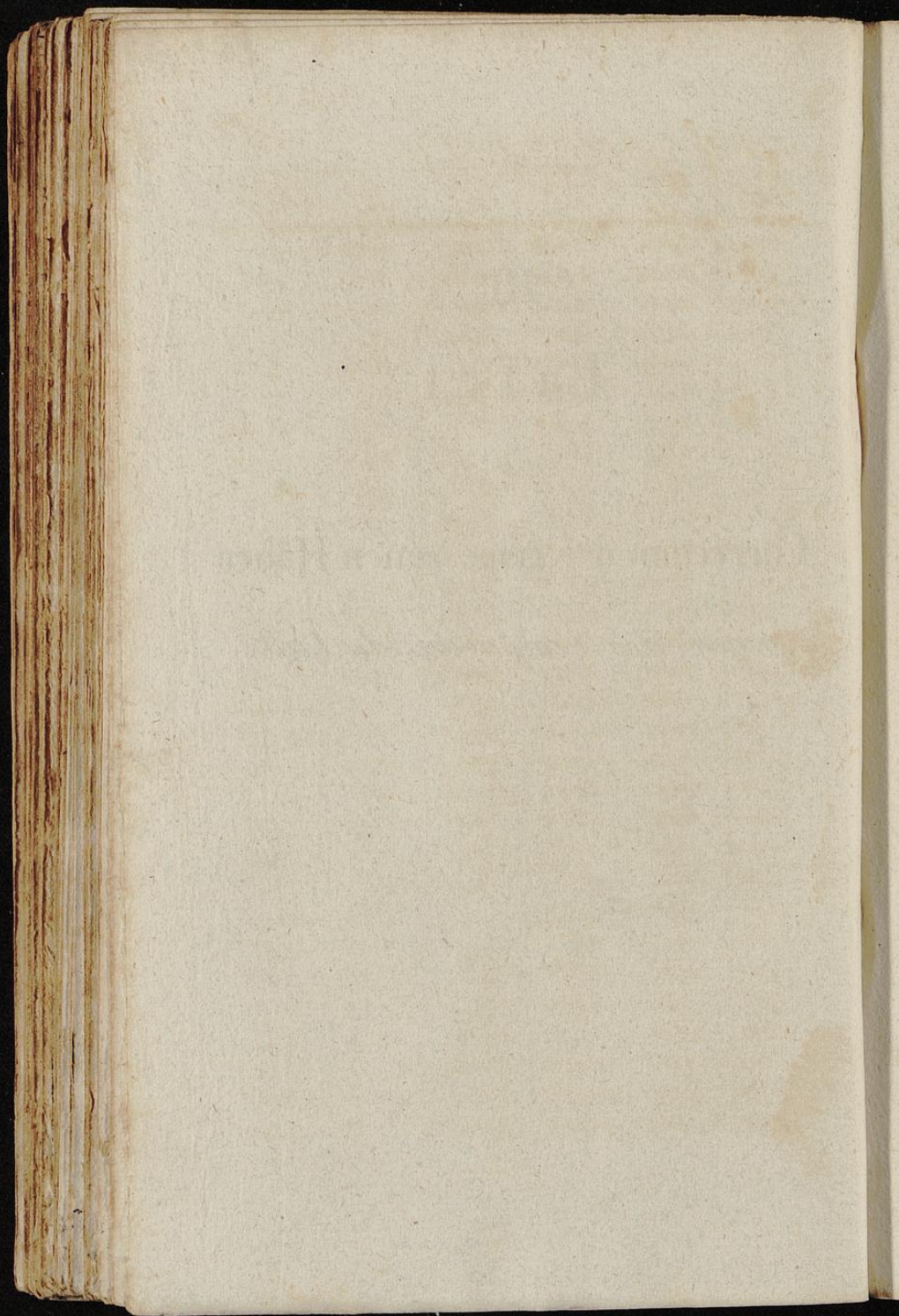
III

Tafel

zur

Correction der gemessenen Höhen

wegen der Temperatur der Luft.



<i>A.</i>		<i>Correction für</i>				
<i>Toisett</i>	<i>1 Gr. Tois.</i>	<i>2 Gr. Tois.</i>	<i>3 Gr. Tois.</i>	<i>4 Gr. Tois.</i>	<i>5 Gr. Tois.</i>	
1	0005	0009	0014	0019	0023	
2	0009	0019	0028	0038	0047	
3	0014	0028	0042	0056	0070	
4	0019	0038	0056	0075	0094	
5	0023	0047	0070	0094	0117	
6	0028	0056	0084	0113	0141	
7	0033	0066	0098	0131	0161	
8	0038	0075	0113	0150	0188	
9	0042	0084	0127	0169	0210	
10	0047	0094	0141	0188	0234	
20	0094	0188	0281	0375	0469	
30	0141	0281	0422	0563	0703	
40	0188	0375	0563	0750	0938	
50	0234	0469	0703	0938	1171	
60	0281	0563	0844	1125	1406	
70	0328	0656	0984	1313	1606	
80	0375	0750	1125	1500	1875	
90	0422	0844	1266	1688	2104	
100	0689	0938	1406	1875	2344	
200	0938	1875	2813	3750	4688	
300	1416	2813	4219	5625	7031	
400	1875	3750	5625	7500	9375	
500	2343	4688	7031	9375	11719	
600	2813	5625	8438	11250	14063	
700	3281	6562	9844	13125	16406	
800	3750	7500	11250	15000	18750	
900	4219	8438	12656	16875	21038	
1000	4688	9375	14063	18750	23438	
2000	9375	18750	28125	37500	46875	
3000	14063	28125	42188	50250	70313	

Correction für

A. Toisen	Correction für				
	6Gr. Tois.	7Gr. Tois.	8Gr. Tois.	9Gr. Tois.	10Gr. Tois.
1	0,028	0,033	0,038	0,042	0,047
2	0,056	0,066	0,075	0,084	0,094
3	0,084	0,098	0,113	0,127	0,141
4	0,113	0,131	0,150	0,169	0,188
5	0,141	0,164	0,188	0,211	0,234
6	0,169	0,196	0,225	0,253	0,281
7	0,197	0,230	0,263	0,295	0,328
8	0,225	0,263	0,300	0,338	0,375
9	0,253	0,295	0,338	0,380	0,422
10	0,281	0,328	0,375	0,422	0,469
20	0,563	0,556	0,750	0,841	0,938
30	0,844	0,984	1,125	1,266	1,406
40	1,125	1,313	1,500	1,688	1,875
50	1,405	1,641	1,875	2,109	2,344
60	1,688	1,965	2,250	2,531	2,813
70	1,969	2,297	2,625	2,953	3,281
80	2,250	2,625	3,000	3,375	3,750
90	2,531	2,953	3,375	3,797	4,219
100	2,813	3,281	3,750	4,219	4,688
200	5,625	6,563	7,500	8,438	9,375
300	8,438	9,844	11,250	12,656	14,063
400	11,250	13,125	15,000	16,875	18,750
500	14,050	16,406	18,750	21,094	23,438
600	16,875	19,646	22,500	25,313	28,125
700	19,688	22,969	26,250	29,531	32,813
800	22,500	26,250	30,000	33,750	37,500
900	25,313	29,531	33,750	37,969	42,188
1000	28,125	32,813	37,500	42,188	46,875
2000	56,250	65,625	75,000	84,375	93,750
3000	84,375	98,738	112,500	126,563	140,625

A.	Correction für				
	11Gr. Tois.	12Gr. Tois.	13Gr. Tois.	14Gr. Tois.	15Gr. Tois.
1	0,052	0,056	0,061	0,066	0,070
2	0,103	0,113	0,122	0,131	0,141
3	0,155	0,169	0,183	0,197	0,211
4	0,206	0,225	0,244	0,263	0,281
5	0,258	0,281	0,305	0,328	0,352
6	0,309	0,338	0,366	0,394	0,422
7	0,361	0,394	0,427	0,459	0,492
8	0,413	0,450	0,488	0,525	0,563
9	0,464	0,506	0,548	0,591	0,633
10	0,516	0,563	0,609	0,656	0,703
20	1,031	1,125	1,219	1,313	1,406
30	1,547	1,688	1,828	1,969	2,109
40	2,063	2,250	2,438	2,625	2,813
50	2,581	2,813	3,047	3,281	3,516
60	3,094	3,375	3,656	3,938	4,219
70	3,609	3,938	4,266	4,594	4,922
80	4,125	4,500	4,875	5,250	5,625
90	4,646	5,063	5,484	5,906	6,328
100	5,156	5,625	6,094	6,563	7,031
200	10,313	11,250	12,188	13,125	14,063
300	15,469	16,875	18,281	19,688	21,094
400	20,625	22,500	24,375	26,250	28,125
500	25,781	28,125	30,469	32,813	35,156
600	30,938	33,750	36,563	39,375	42,188
700	36,094	39,375	42,656	45,938	49,219
800	41,250	45,000	48,750	52,500	56,250
900	46,406	50,625	54,844	59,063	63,281
1000	51,563	56,250	60,938	65,625	70,313
2000	103,125	112,500	121,875	131,250	140,625
3000	154,688	168,750	182,813	196,875	210,938

A.	Correction für				
	16Gr. Tois.	17Gr. Tois.	18Gr. Tois.	19Gr. Tois.	20Gr. Tois.
1	0,075	0,080	0,084	0,089	0,094
2	0,150	0,159	0,169	0,178	0,188
3	0,225	0,239	0,253	0,267	0,281
4	0,300	0,319	0,338	0,356	0,375
5	0,375	0,398	0,422	0,445	0,469
6	0,450	0,478	0,506	0,534	0,563
7	0,525	0,558	0,591	0,623	0,656
8	0,600	0,638	0,675	0,713	0,750
9	0,675	0,717	0,759	0,802	0,844
10	0,750	0,797	0,844	0,891	0,938
20	1,500	1,594	1,688	1,781	1,875
30	2,250	2,391	2,531	2,678	2,813
40	3,000	3,188	3,375	3,563	3,750
50	3,750	3,984	4,219	4,453	4,688
60	4,500	4,781	5,063	5,344	5,625
70	5,250	5,578	5,906	6,234	6,563
80	6,000	6,375	6,750	7,125	7,500
90	6,750	7,172	7,594	8,016	8,438
100	7,500	7,969	8,438	8,906	9,375
200	15,000	15,938	16,875	17,813	18,750
300	22,500	23,906	25,313	26,719	28,125
400	30,000	31,875	33,750	35,625	37,500
500	37,500	39,844	42,188	44,531	46,875
600	45,000	47,813	50,625	53,438	56,250
700	52,500	55,781	59,063	62,344	65,625
800	60,000	63,750	67,500	71,250	75,000
900	67,500	71,719	75,938	80,156	84,375
1000	75,000	79,688	84,375	89,063	93,750
2000	150,000	159,375	168,750	178,125	187,500
3000	225,000	239,063	253,125	267,188	281,250

A.	Correction für				
	21 Gr. Tois.	22 Gr. Tois.	23 Gr. Tois.	24 Gr. Tois.	25 Gr. Tois.
1	0,098	0,103	0,108	0,113	0,117
2	0,197	0,207	0,216	0,225	0,234
3	0,295	0,309	0,324	0,338	0,352
4	0,394	0,413	0,431	0,450	0,469
5	0,492	0,516	0,539	0,563	0,586
6	0,591	0,620	0,647	0,675	0,703
7	0,689	0,723	0,755	0,788	0,820
8	0,788	0,826	0,863	0,900	0,938
9	0,886	0,929	0,970	1,013	1,047
10	0,984	1,032	1,078	1,125	1,172
20	1,969	2,065	2,156	2,250	2,344
30	2,953	3,093	3,234	3,375	3,516
40	3,938	4,130	4,313	4,500	4,688
50	4,921	5,163	5,391	5,625	5,859
60	5,906	6,195	6,469	6,750	7,031
70	6,891	7,228	7,547	7,875	8,203
80	7,875	8,260	8,625	9,000	9,375
90	8,859	9,293	9,703	10,125	10,547
100	9,844	10,325	10,781	11,250	11,719
200	19,688	20,650	21,563	22,500	23,438
300	29,531	30,975	32,344	33,750	35,156
400	39,375	41,300	43,125	45,000	46,875
500	49,219	51,625	53,906	56,250	58,593
600	59,063	61,950	64,688	67,500	70,313
700	68,906	72,275	75,469	78,750	82,031
800	78,750	82,600	86,250	90,000	93,750
900	88,594	92,925	97,031	101,250	105,469
1000	98,438	103,250	107,813	112,500	117,188
2000	196,875	206,500	215,625	225,000	234,375
3000	295,313	309,750	323,438	337,500	351,563

A. Toisen.	Correction für				
	26Gr. Tois.	27Gr. Tois.	28Gr. Tois.	29Gr. Tois.	30Gr. Tois.
1	0,122	0,127	0,131	0,136	0,141
2	0,244	0,253	0,263	0,271	0,281
3	0,366	0,380	0,394	0,408	0,422
4	0,488	0,506	0,525	0,544	0,563
5	0,609	0,633	0,656	0,688	0,703
6	0,731	0,759	0,788	0,816	0,844
7	0,853	0,886	0,919	0,952	0,984
8	0,975	1,013	1,050	1,088	1,125
9	1,097	1,139	1,181	1,225	1,266
10	1,219	1,266	1,313	1,359	1,406
20	2,438	2,531	2,625	2,719	2,813
30	3,656	3,797	3,938	4,078	4,219
40	4,875	5,063	5,245	5,438	5,625
50	6,094	6,328	6,563	6,797	7,031
60	7,313	7,594	7,875	8,156	8,438
70	8,531	8,859	9,188	9,516	9,844
80	9,750	10,125	10,500	10,875	11,250
90	10,969	11,391	11,813	12,254	12,656
100	12,188	12,656	13,125	13,594	14,063
200	24,375	25,313	26,250	27,188	28,125
300	36,563	37,969	39,375	40,781	42,188
400	48,750	50,625	52,450	54,375	56,250
500	60,938	63,281	65,625	67,969	70,313
600	73,125	75,938	78,750	81,563	84,375
700	85,313	88,594	91,875	95,156	98,438
800	97,500	101,250	105,000	108,750	112,500
900	109,688	113,906	118,125	122,544	126,563
1000	121,875	126,563	131,250	135,938	140,625
2000	243,750	253,125	262,500	271,875	281,250
3000	365,625	379,688	393,750	407,813	421,875