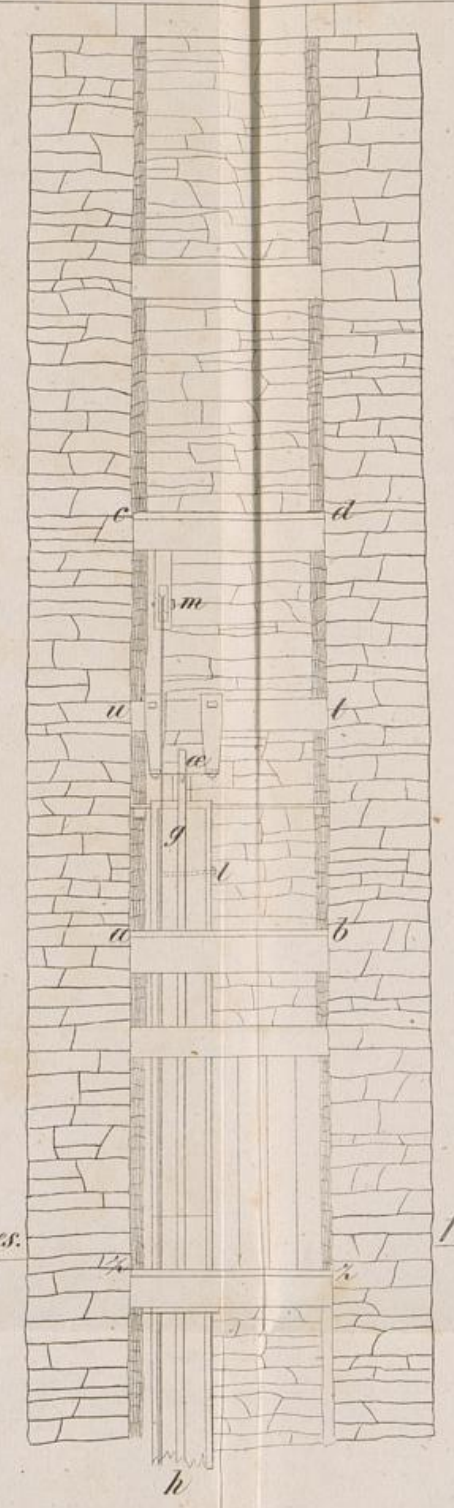


Hängebank.

Fig: 1.

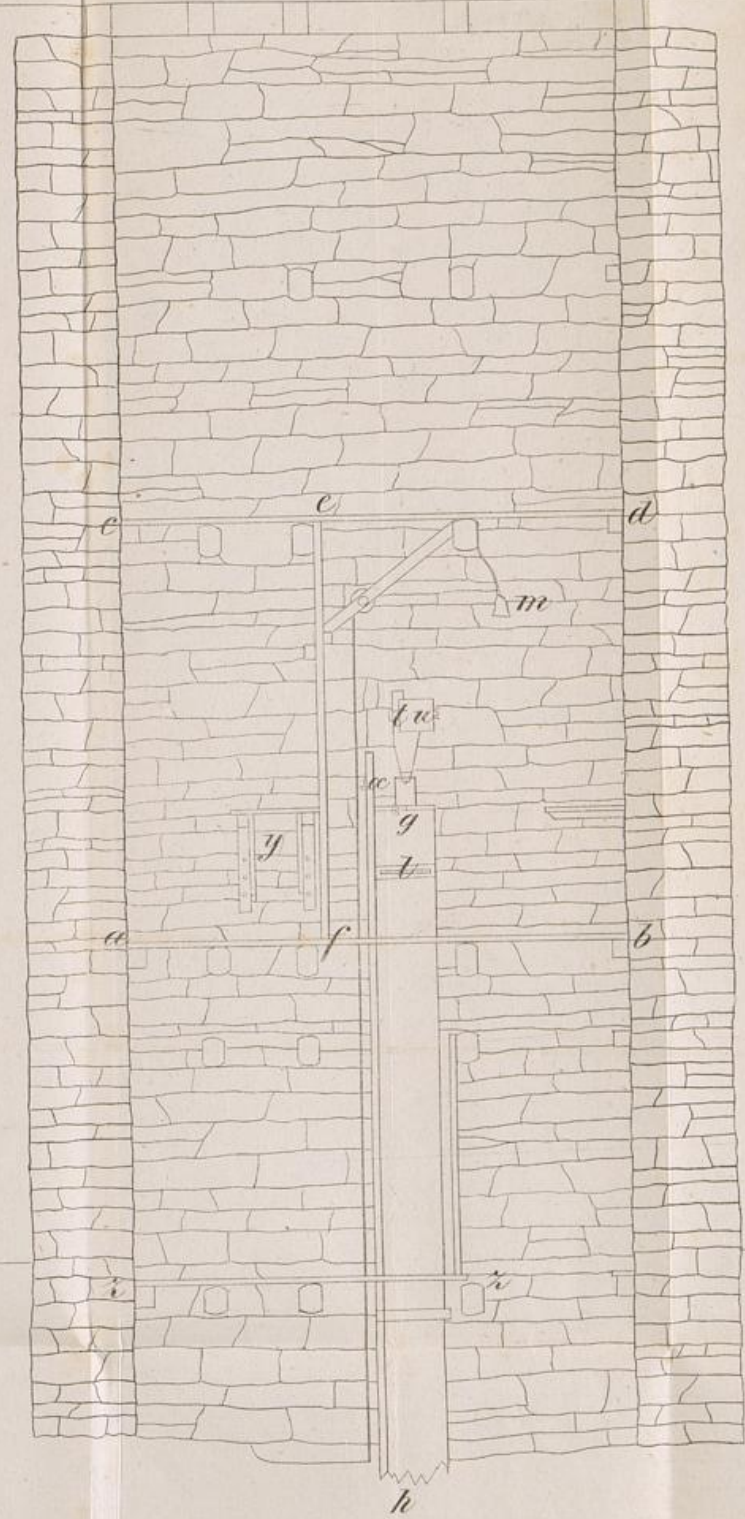


Oberfläche des Gebirges.

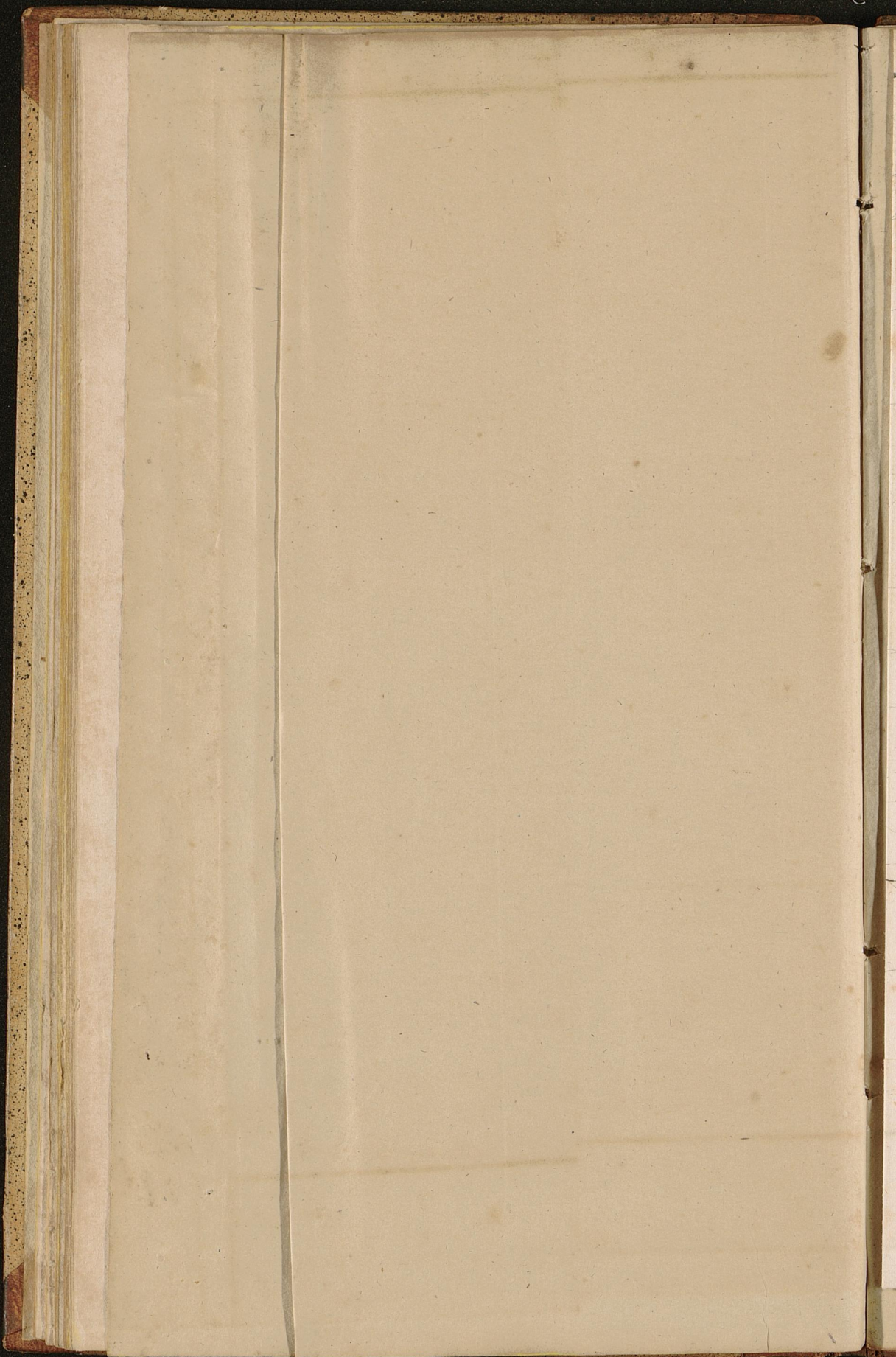
f. - 51' - in W.

Fig: 2.

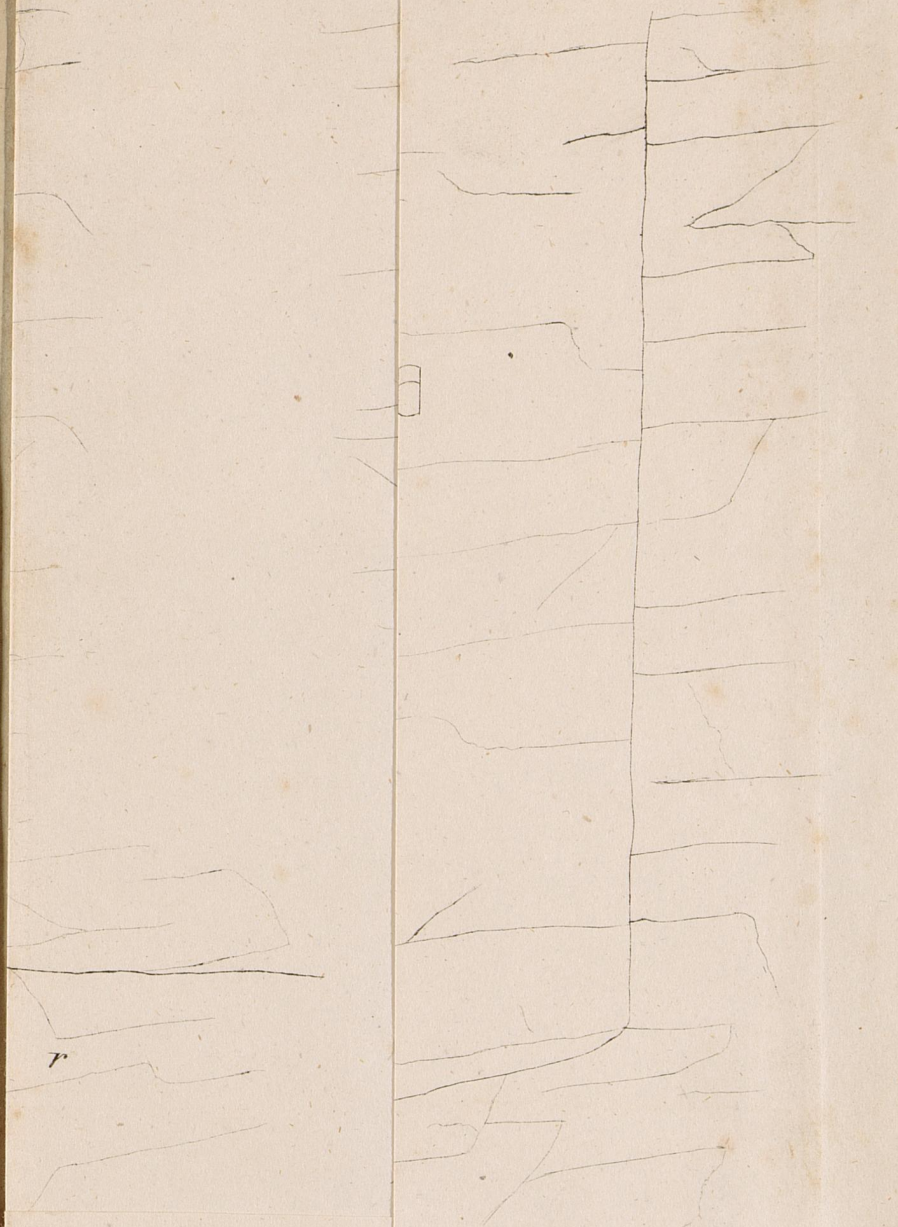
Hängebank.



Oberfläche des Gebirges.



Taf: II.



r



Fig: 1.

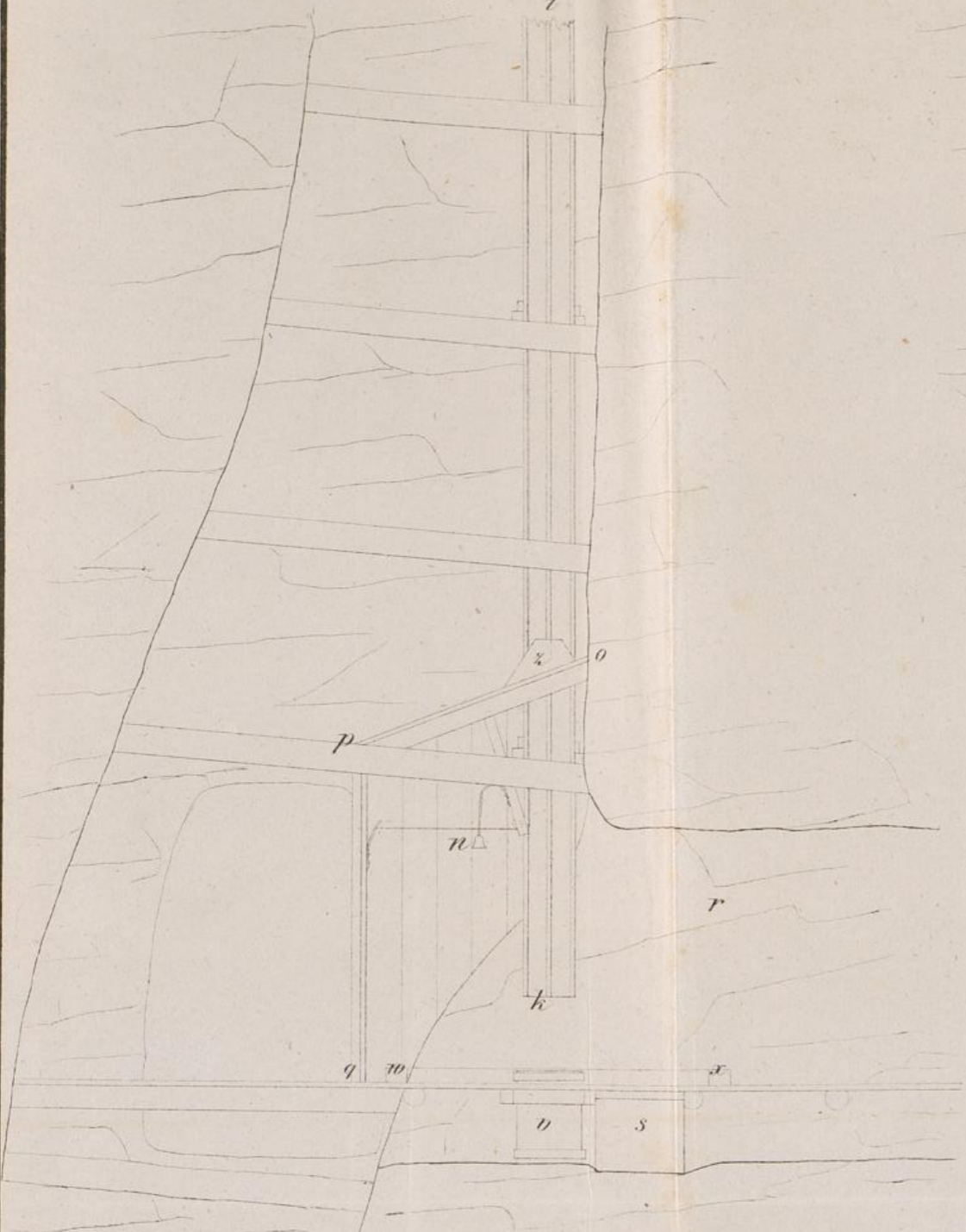
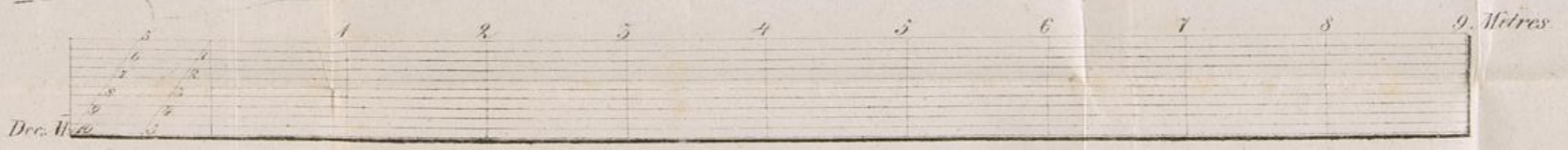
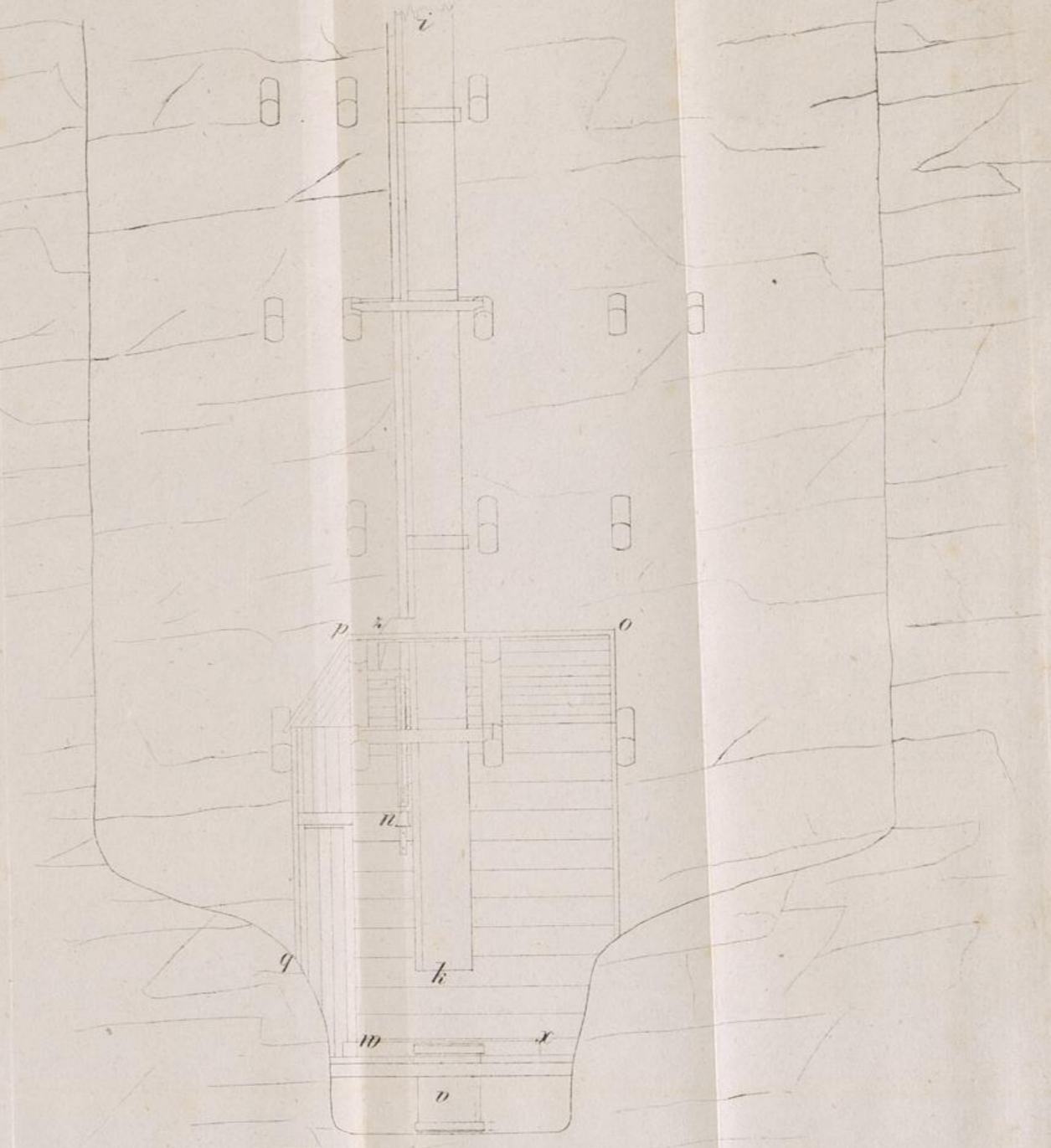
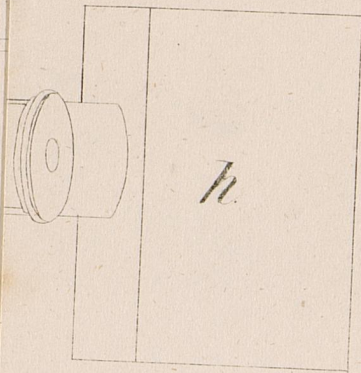
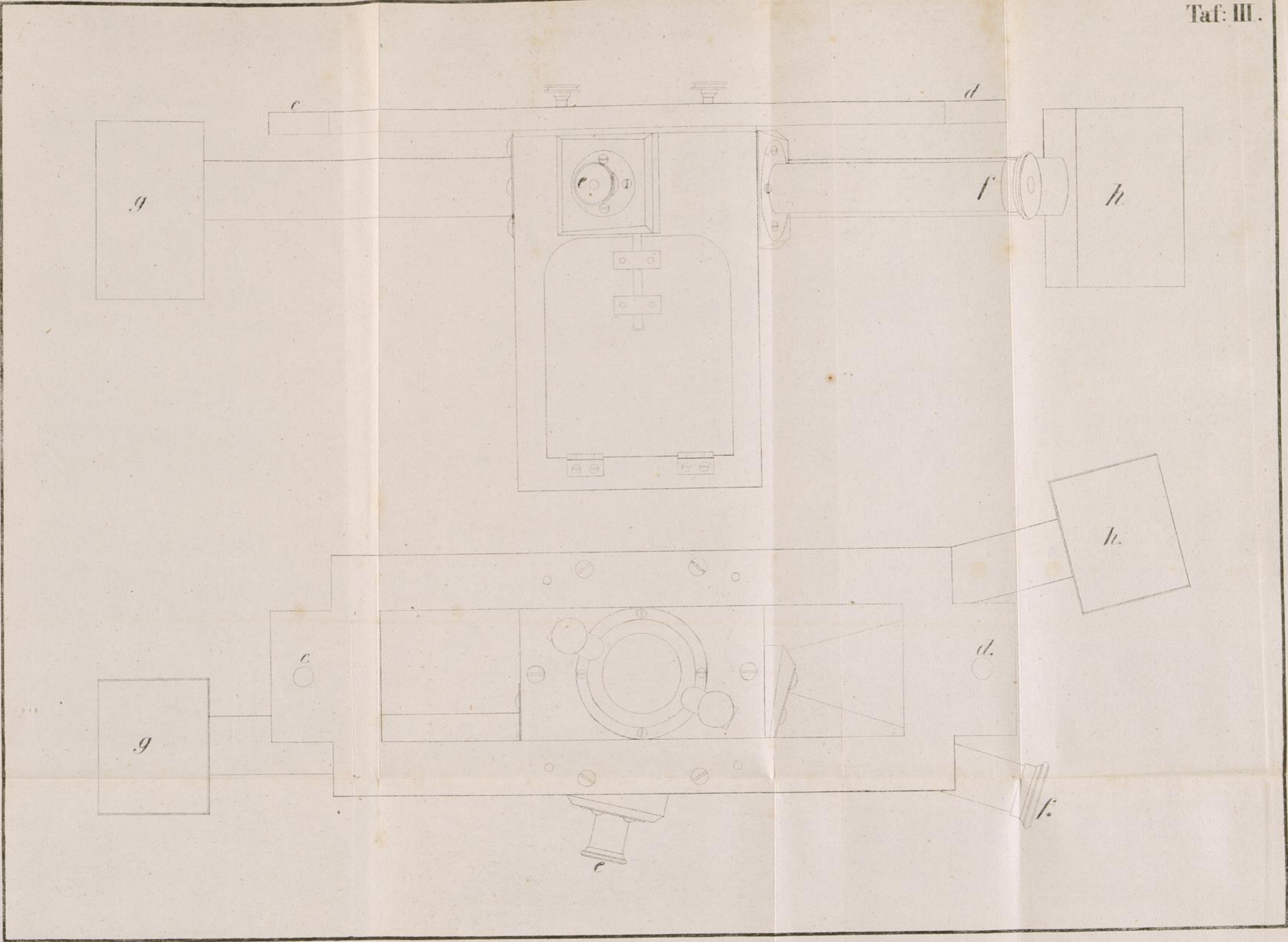


Fig: 2.



Taf: III.





Taf: IV.

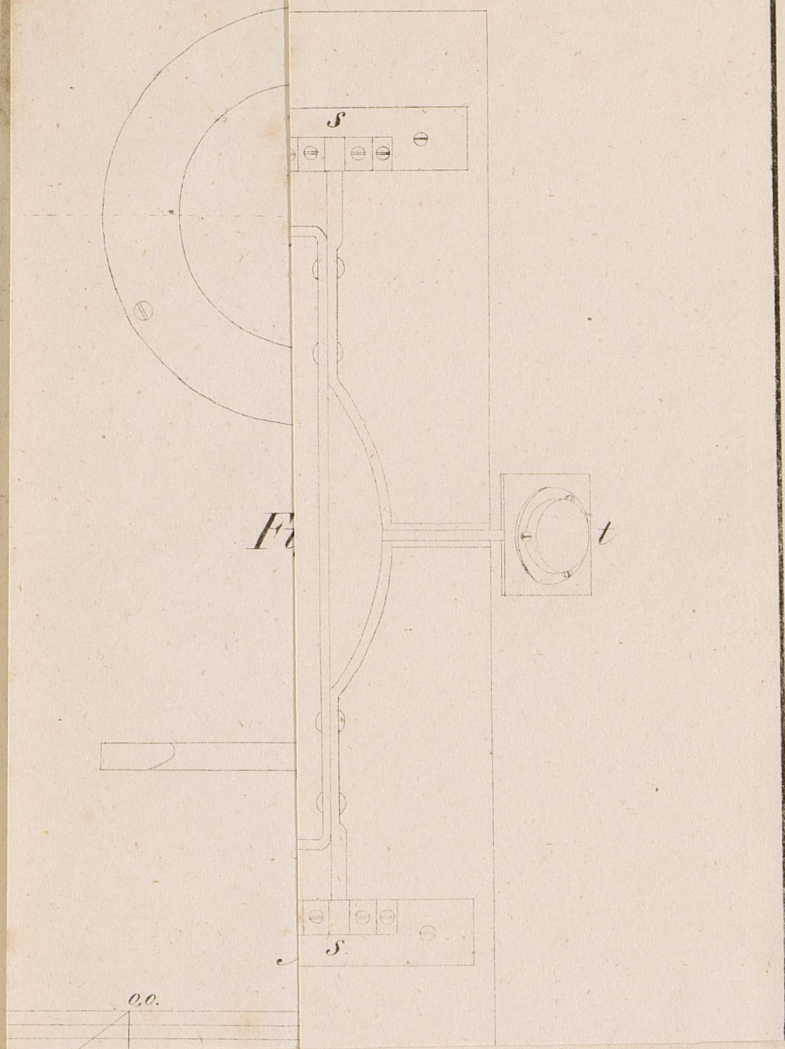


Fig: 1. a.

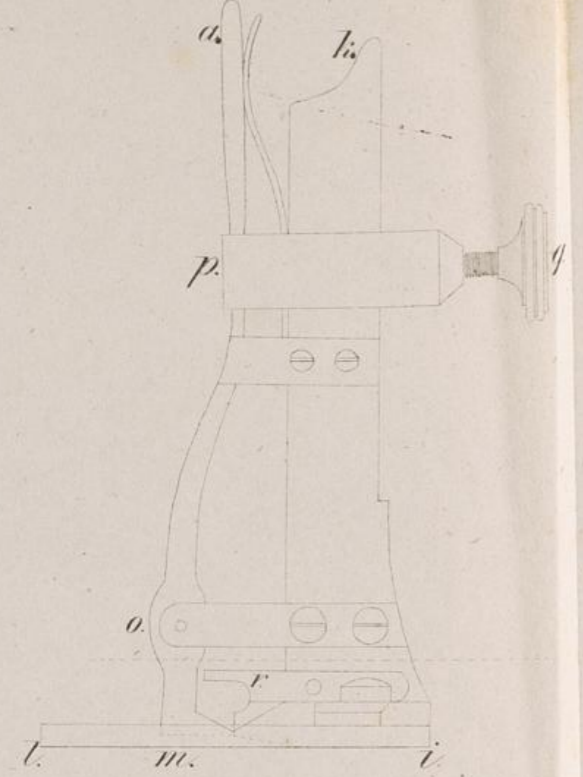


Fig: 1. b.

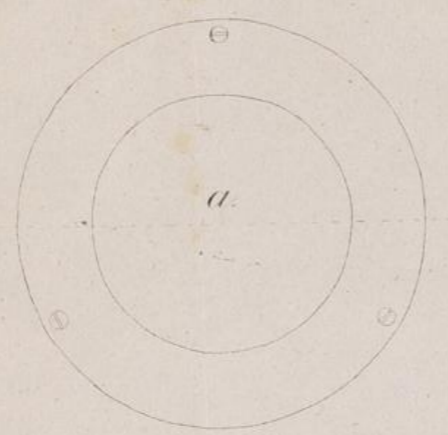
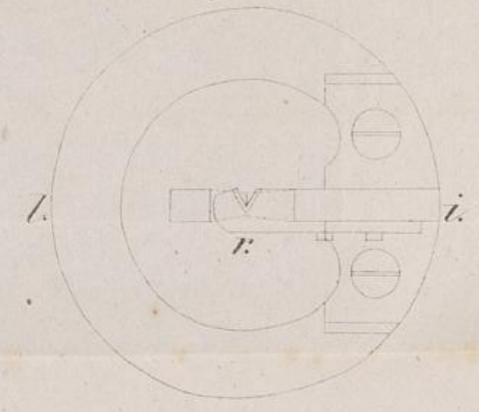


Fig: 2.



Mafsstab zu Fig: 3.

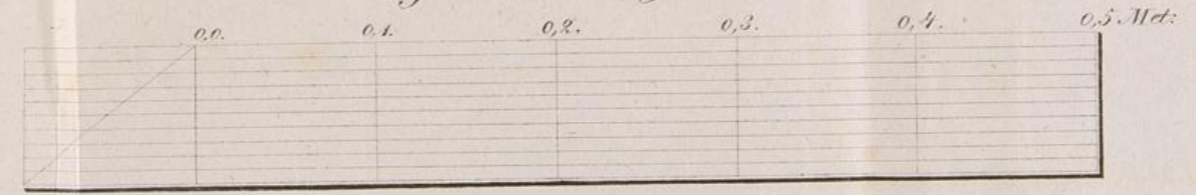


Fig: 3. a.

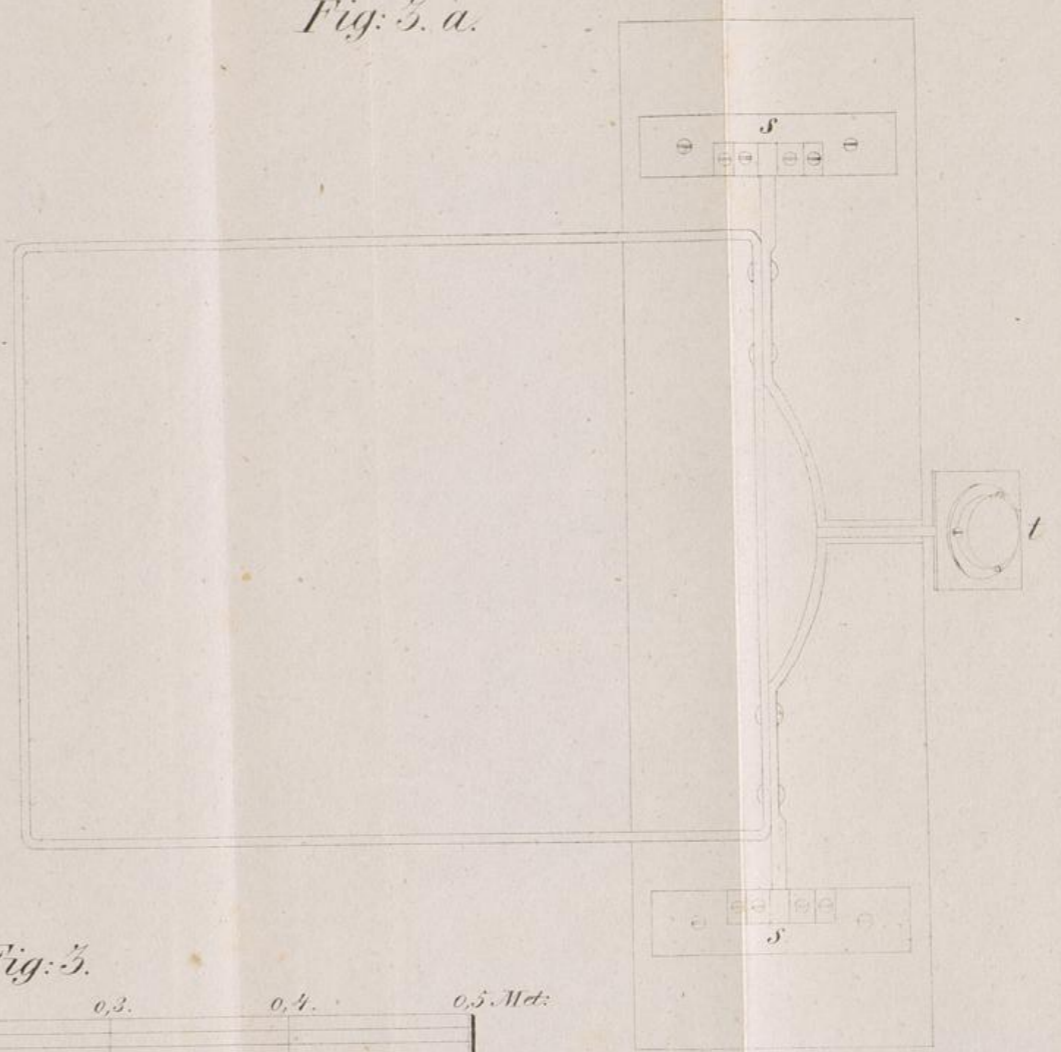


Fig: 3. b.

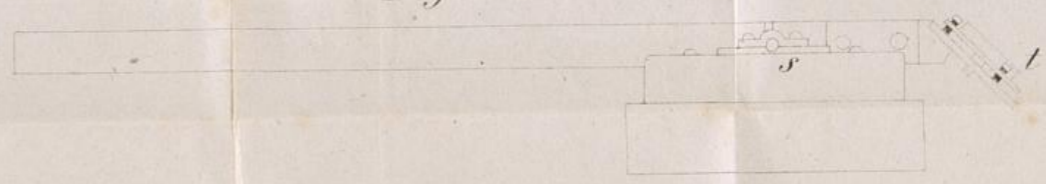


Fig: 1.

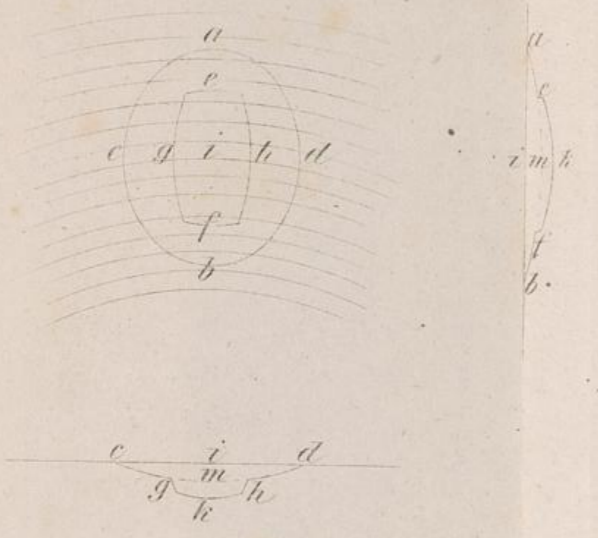


Fig: 2.

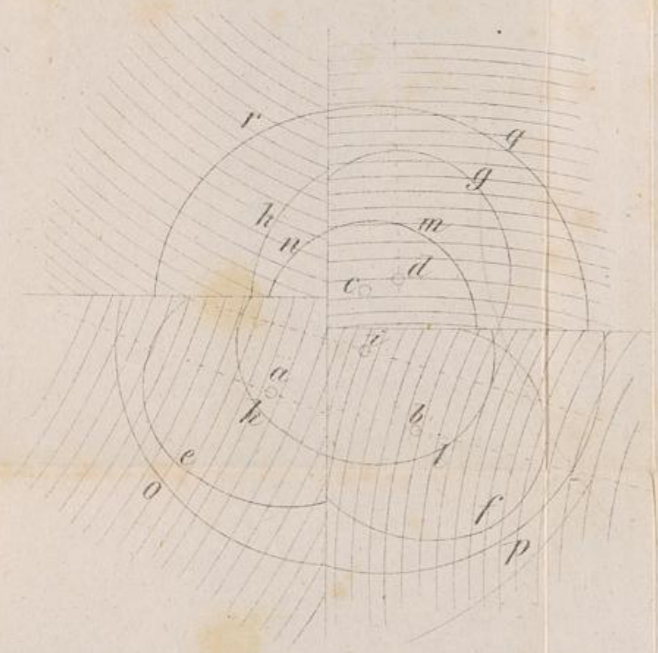
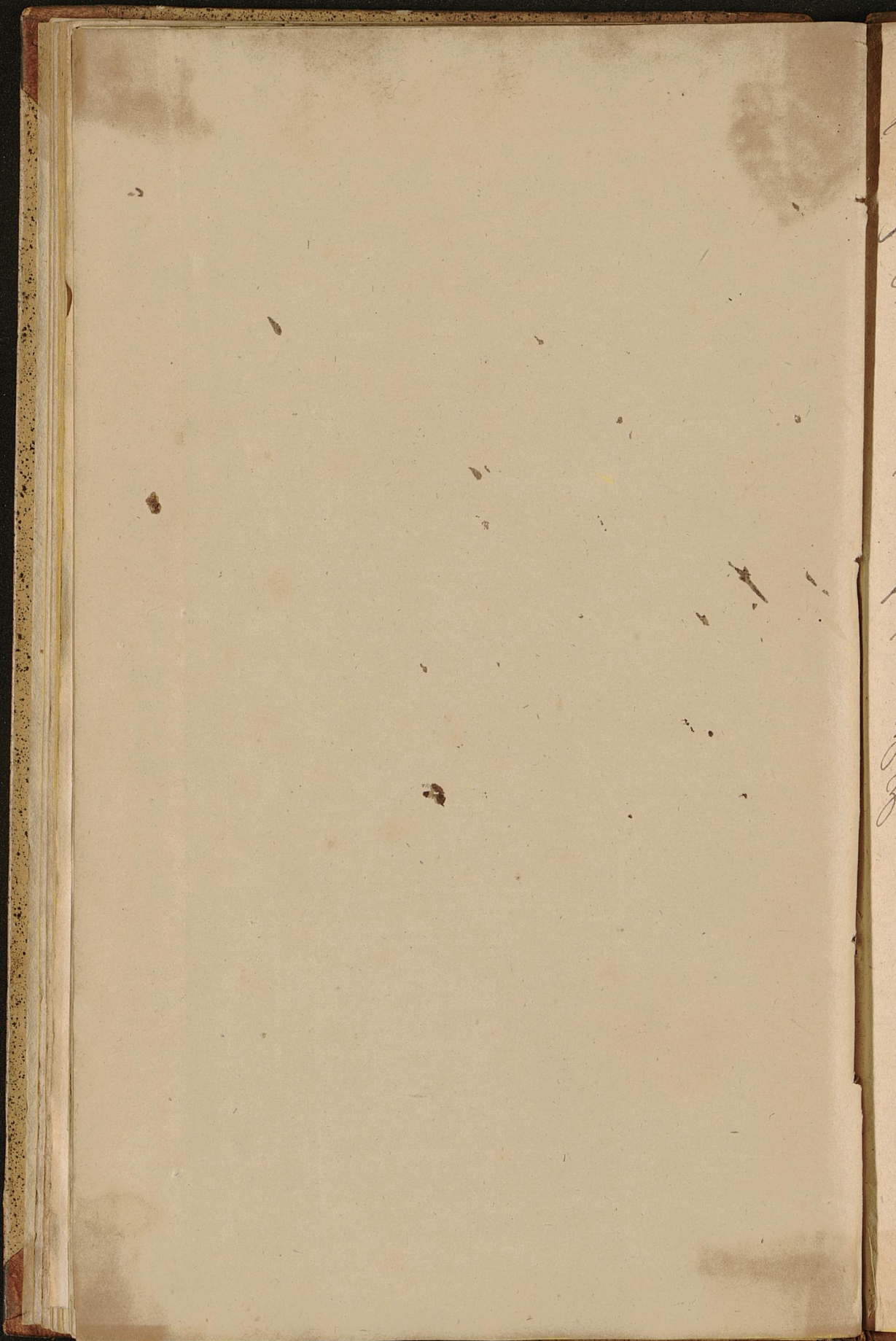


Fig: 3.





Ein Haufen zu Freiberg in der
 Gegend des Mühl, gebaut bei 262 par.
 Fuß Fallhöhe, nach Osten, das Mittel
 zu 5,011 par. Längen
 Ein Haufen geb. 4,64 "
 Also unter sind 0,41 par. Längen.

Ein Haufen zu Freiberg in
 Preußen im Jahr 1831, hatte ein Haufen
 bei 488 par. Fuß Fallhöhe von
 Kauf von Kaufmännern. 12,5 par. Längen
 Ein Haufen geb. 12,2 "
 Also unter sind 0,3 par. Längen.

zu Scheibitz waren 28 Haufen.
 zu Freiberg waren 106 Haufen.

