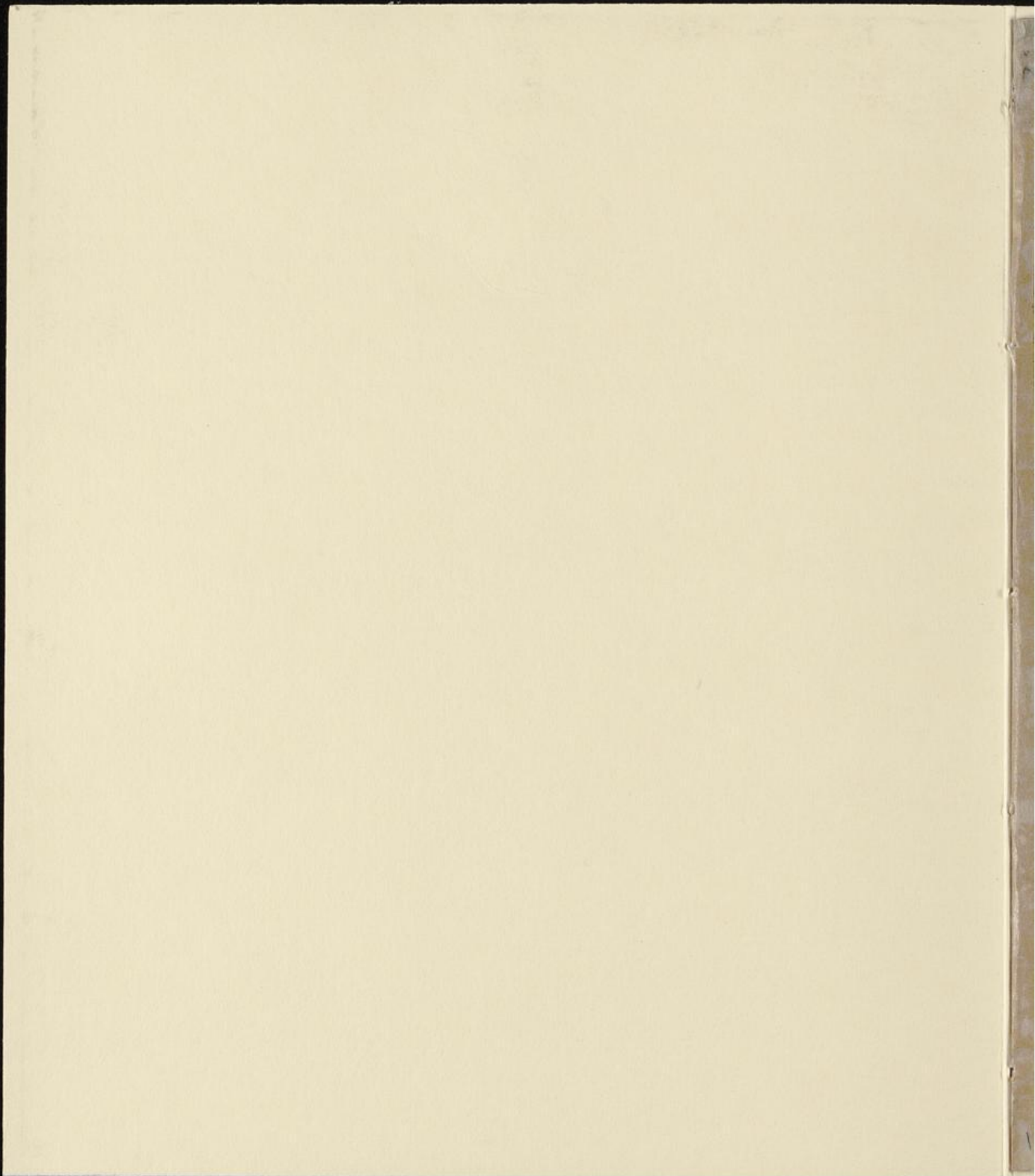


Benz.

1003





1003

**SOLEMNIA SEMISAECULARIA**

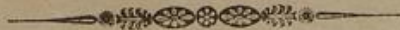
**DIE XXIV. JULII MDCCLXXXIII. CELEBRANDA**

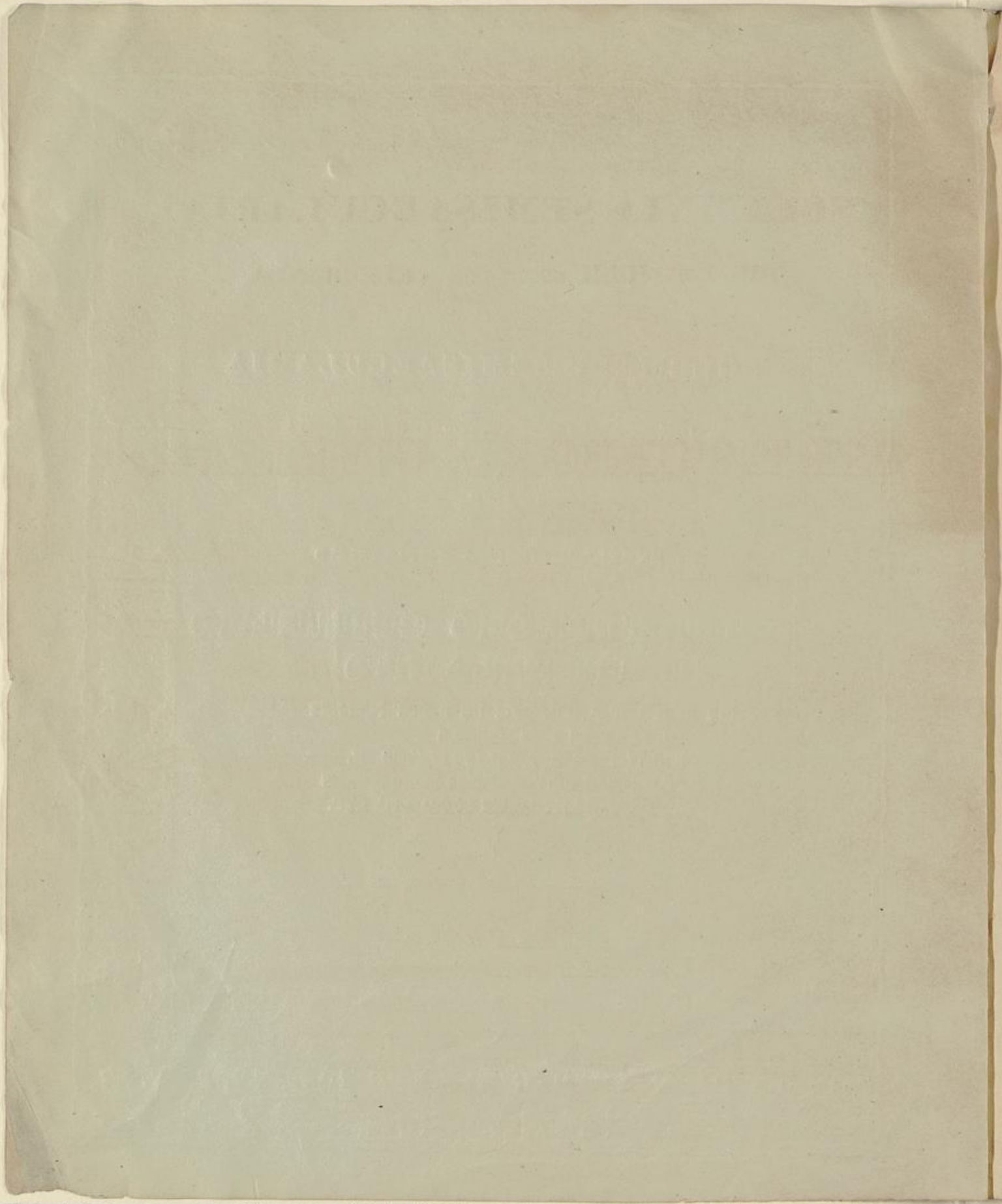
**VIRO**

**EXCELLENTISSIMO AMPLISSIMO**

**CHRISTOPHORO GUILIELMO  
HUFELANDO**

**QUI REGI EST A CONSILIIS DE REBUS PUBLICIS  
AC PRINCEPS EIUS MEDICUS  
EQUITI RUBRAE AQUILAE CLASSIS II.  
PROFESSORI UNIVERSITATIS BEROLINENSIS  
ACADEMIAE LITERARUM SOCIO ETC. ETC.**





**SOLEMNIA SEMISAECULARIA**

**DIE XXIV. JULII MDCCCXXXIII. CELEBRANDA**

VIRO

EXCELLENTISSIMO AMPLISSIMO

**CHRISTOPHORO GUILIELMO  
HUFELANDO**

QUI REGI EST A CONSILHS DE REBUS PUBLICIS  
AC PRINCEPS EIUS MEDICUS  
EQUITI RUBRAE AQUILAE CLASSIS II.  
PROFESSORI UNIVERSITATIS BEROLINENSIS  
ACADEMIAE LITERARUM SOCIO ETC. ETC.

PIO LAETOQUE ANIMO  
GRATULATUR

*Dr. ELFES,*  
*PHYSICUS REGII CIRCULI NOVESIENSIS.*

---

DÜSSELDORPII,  
APUD J. WOLF, MDCCCXXXIII.



⓪ Sol, Eois qui nitidum diem  
Promis quadrigis, Hesperis idem  
Undis recondens, da serenam hoc  
Tempore purpureamque lucem!

Bis quina nam nunc Iustra, per aspera  
Ac dura multa enixus ad arduas  
Verasque laudes, *Hufelandus*  
Salvus et incolumis peregit;

Præceptor olim nominibus mihi  
Multis colendus, Clarii Apollinis  
Clarus sacerdos, Aesculapî et  
Pæonis usque decorus arte.

Nam quis diserta voce reconditas  
Opes recludit, vel tabulis novis  
Novas medendi expromsit artes  
Aptius Hoc meliusque nobis?



Vel doctius quis sollicitudines  
Aut mentis ægræ, corporis aut mala  
Invicta vicit, vel dolores  
Calluit Hoc citius levare?

Hunc vidit olim Jena Vimariæ  
Vicina; sed mox magna Borussiæ  
Terra atque regis clara sedes  
Eximium decus arrogavit.

Nam sicut olim consilio gravi  
Nestor iuvabat regem Agamemmona,  
Mentorque sollers imperitum  
Telemachum iuvenem docebat:

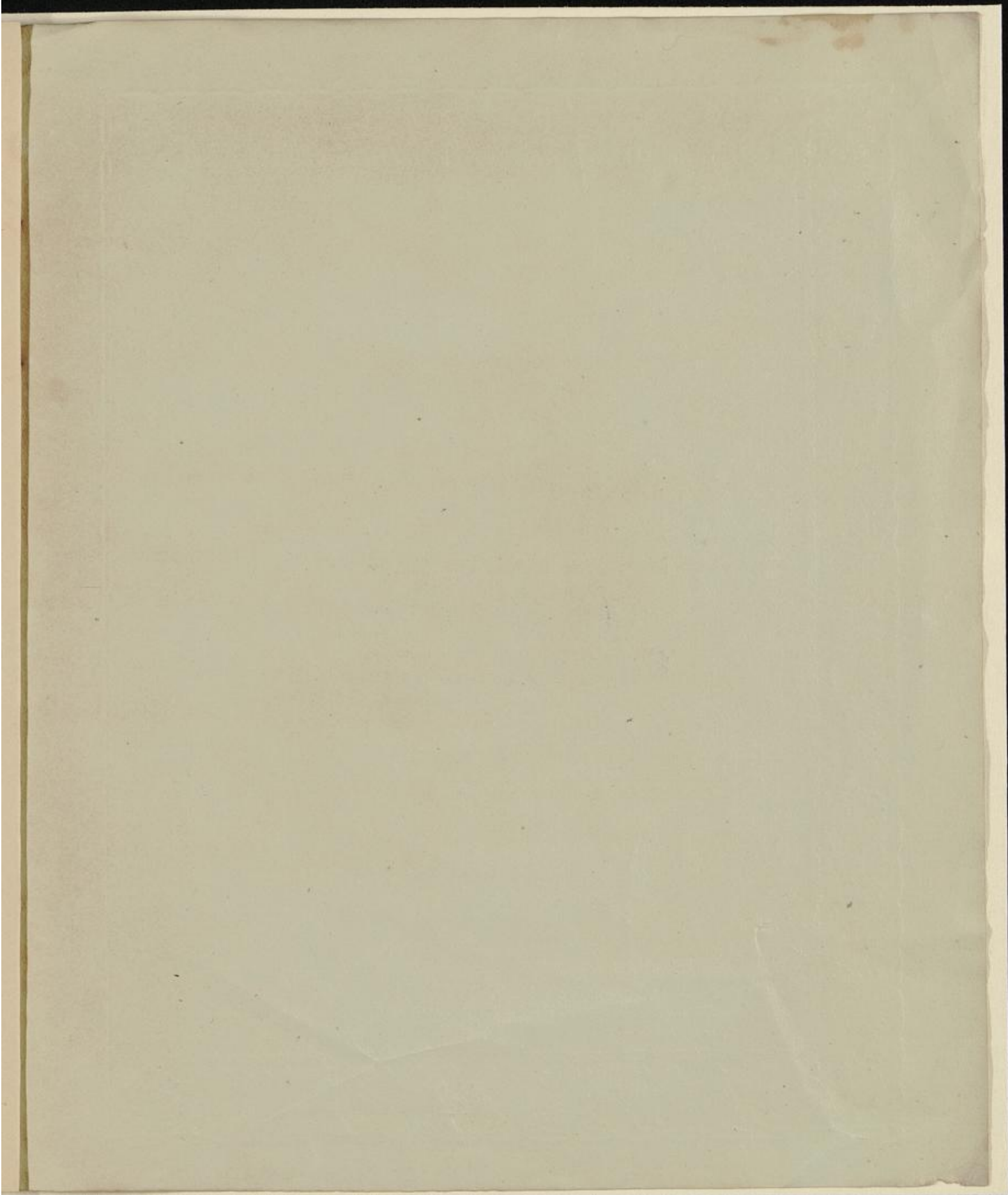
Sic *Hufelandus* consilio iuvat  
Arte imperitos, sic sibi creditam  
Regis salutem rite curat,  
Auxilioque suo tuetur.

Ergo vigentem laudibus ingeni  
Sollertis æque ac semper amabilis  
Virtutis ætas nostra grata  
Prædicet ac series nepotum.

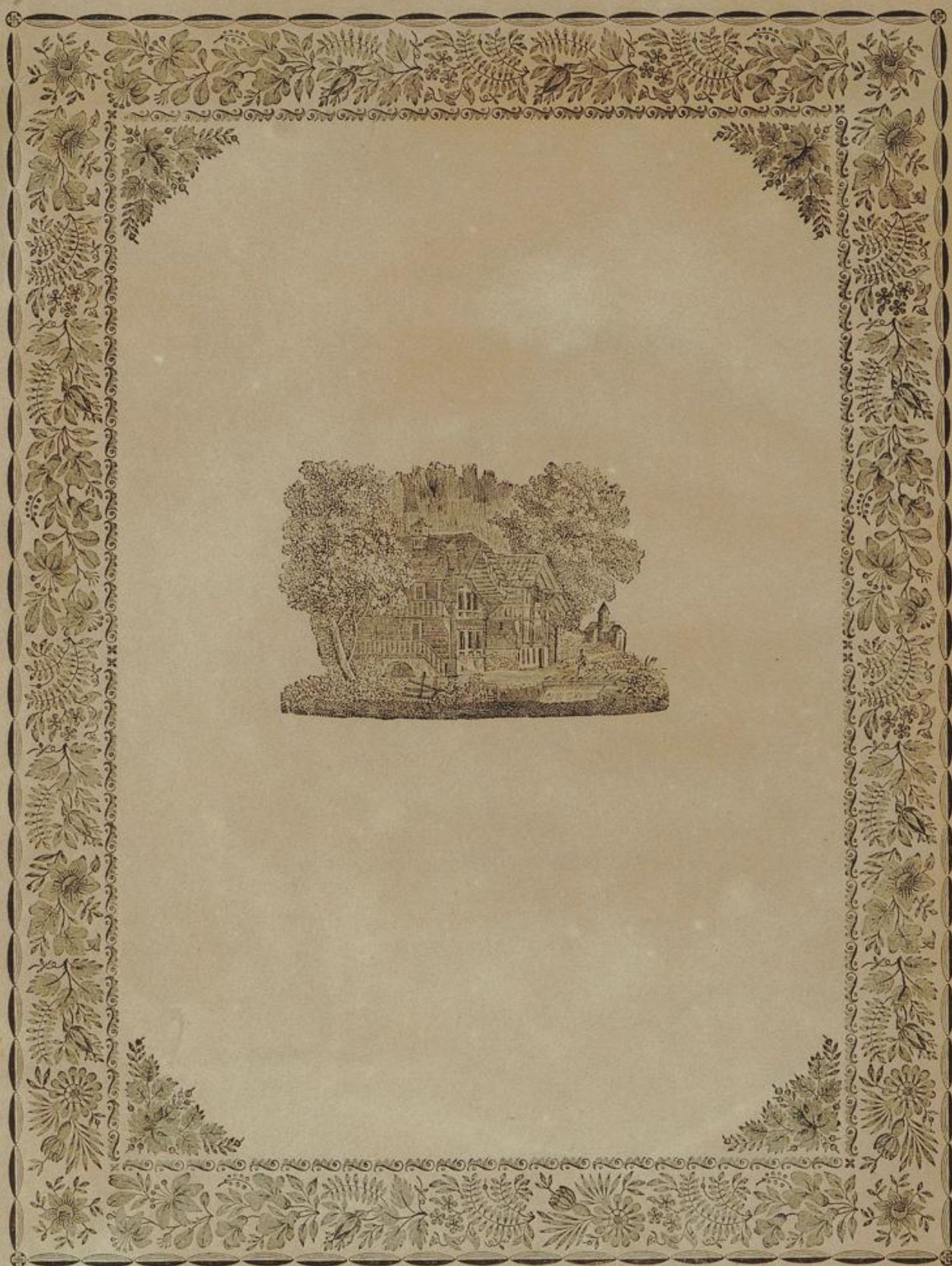
Ipsumque sero rector et arbiter  
Cæli atque terræ demeritum senem  
Deducat ad sedes beatas  
Ac meritam requiem laborum.

Faint, illegible text, possibly bleed-through from the reverse side of the page.

Faint, illegible text, possibly bleed-through from the reverse side of the page.



2919  
-20



2919  
-20



Inches 1 2 3 4 5 6 7 8

Centimetres 1 2 3 4 5 6 7 8 9 10 11 12 13 14 15 16 17 18 19

**TIFFEN** Color Control Patches

© The Tiffen Company, 2007

Blue	Cyan	Green	Yellow	Red	Magenta	White	3/Color	Black
Light Blue	Light Cyan	Light Green	Light Yellow	Light Red	Light Magenta	White	Light Grey	Black
Dark Blue	Dark Cyan	Dark Green	Dark Yellow	Dark Red	Dark Magenta	White	Dark Grey	Black





