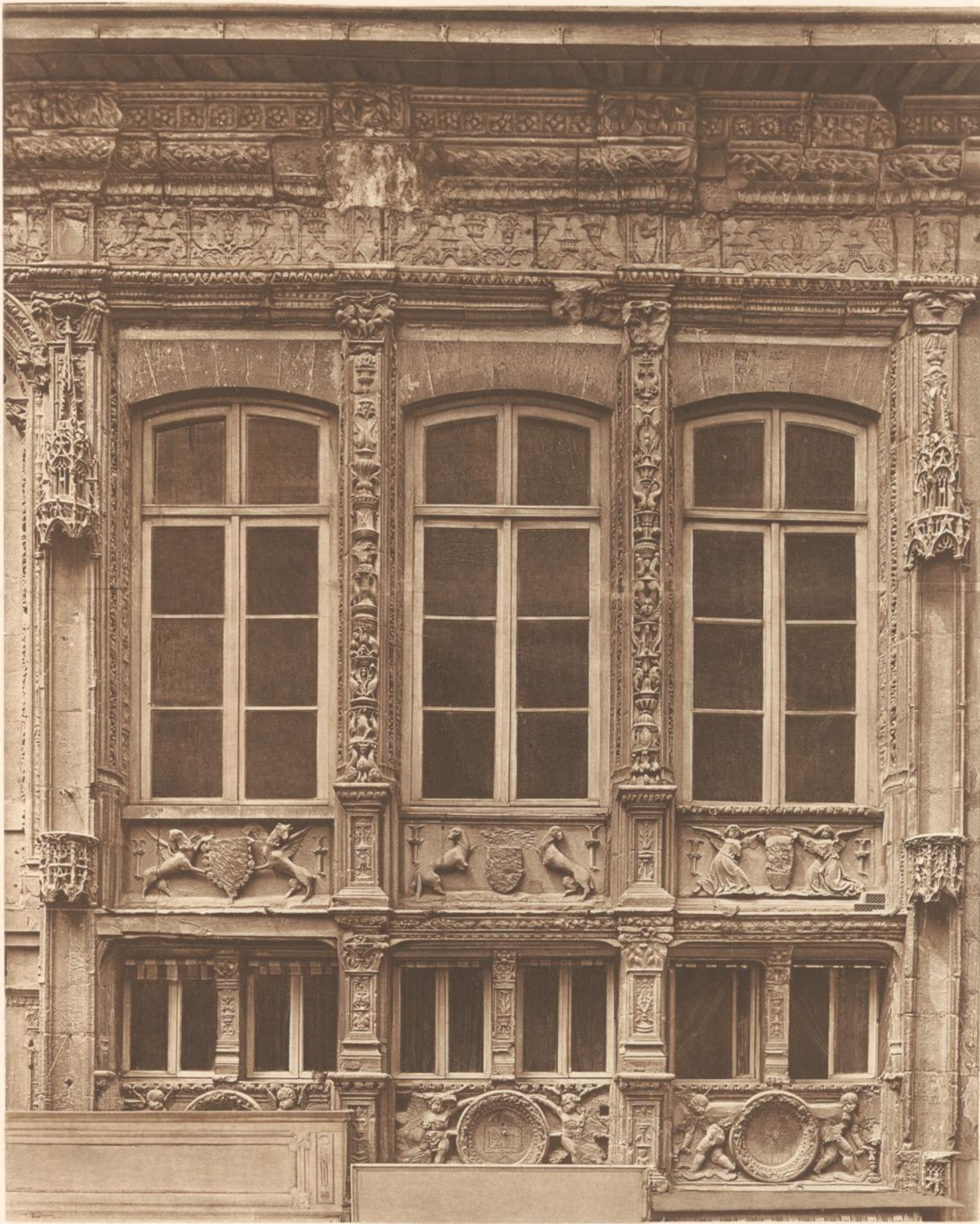


ROUEN
BUREAU DES FINANCES
VUE D'ENSEMBLE

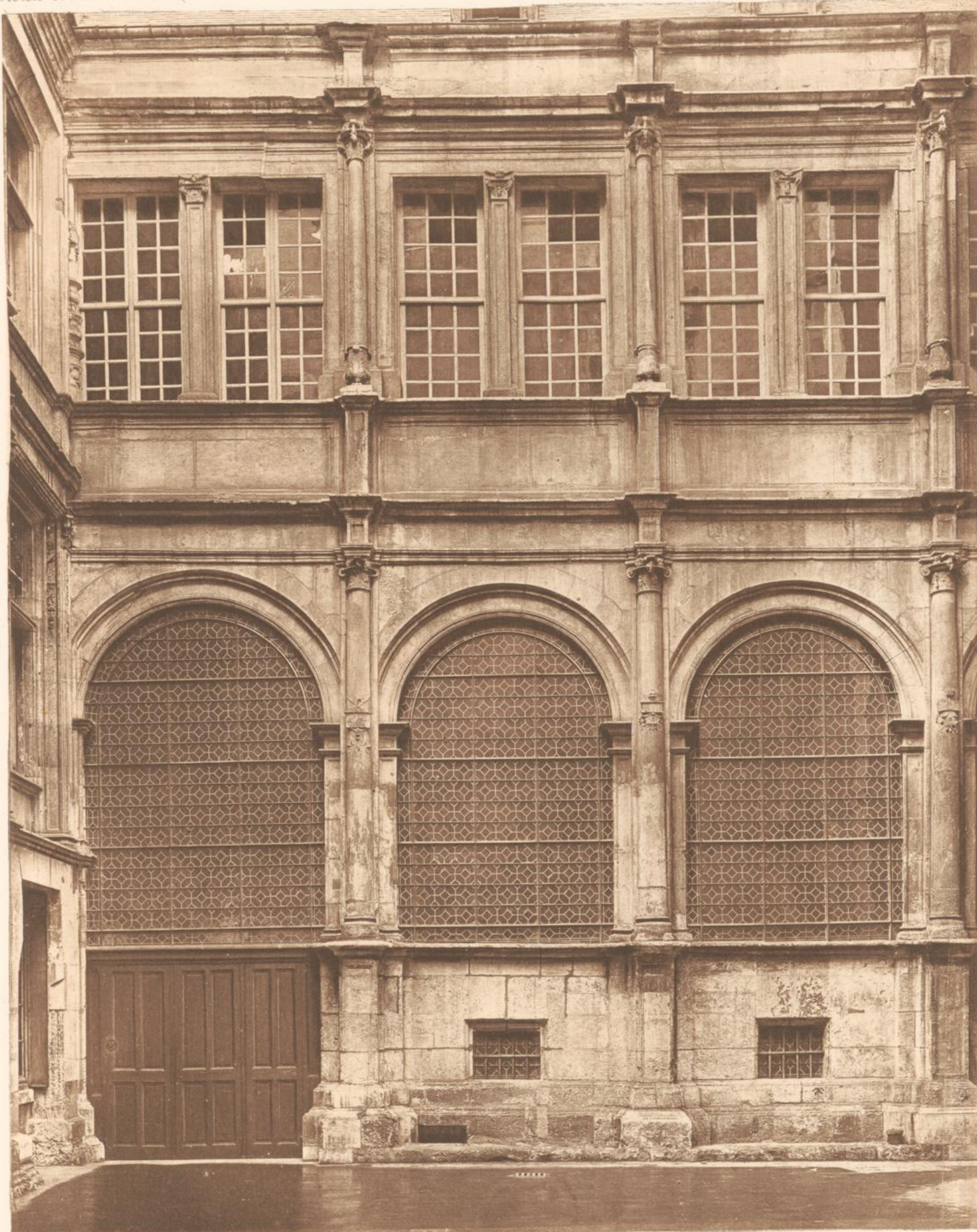
UNIVERSITÄTS- UND LANDESBIBLIOTHEK DÜSSELDORF



Clair Chevojon

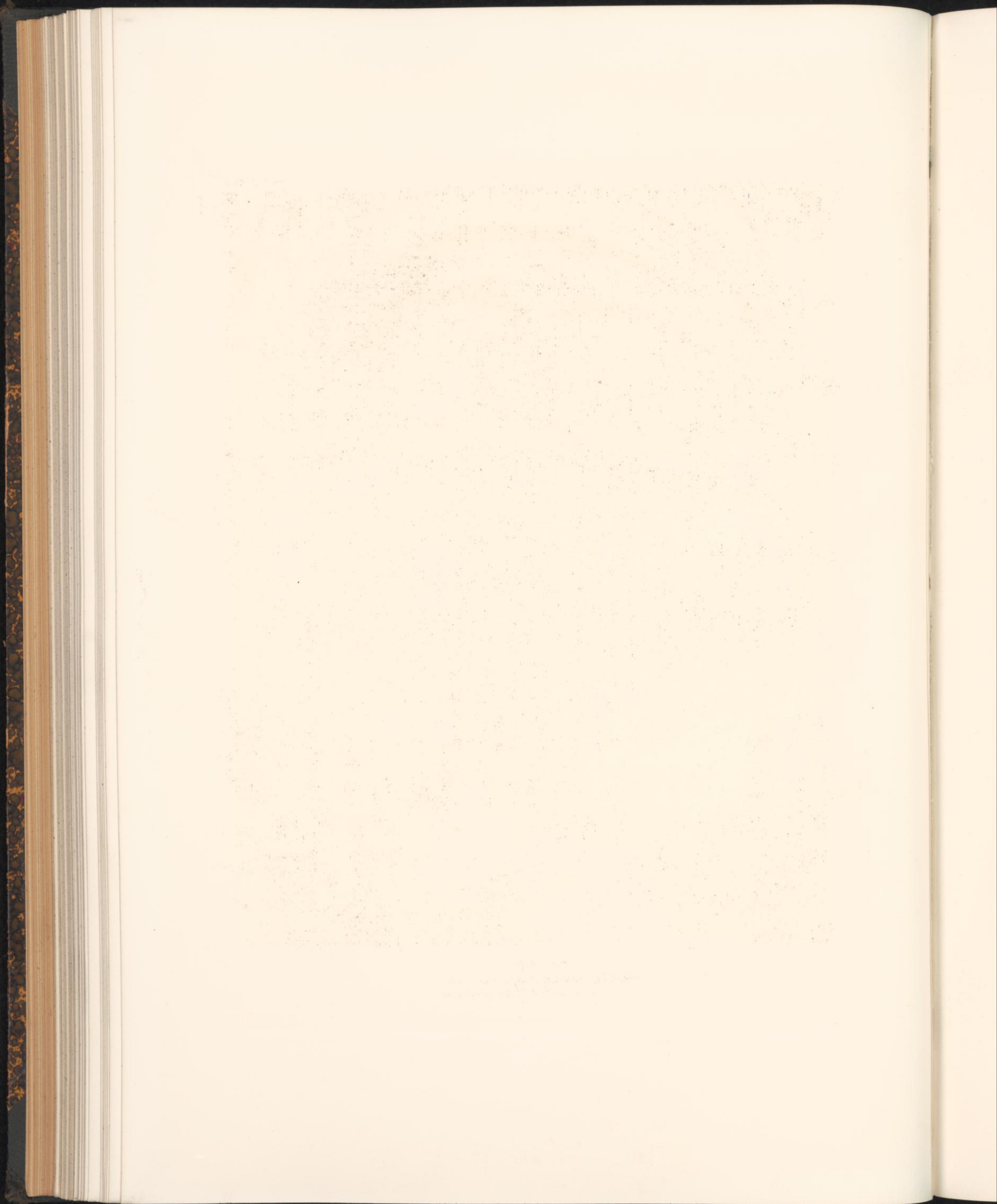
ROUEN
BUREAU DES FINANCES
DÉTAIL DU PREMIER ÉTAGE

[Faint, illegible text, likely bleed-through from the reverse side of the page]



Cliché Chevojon

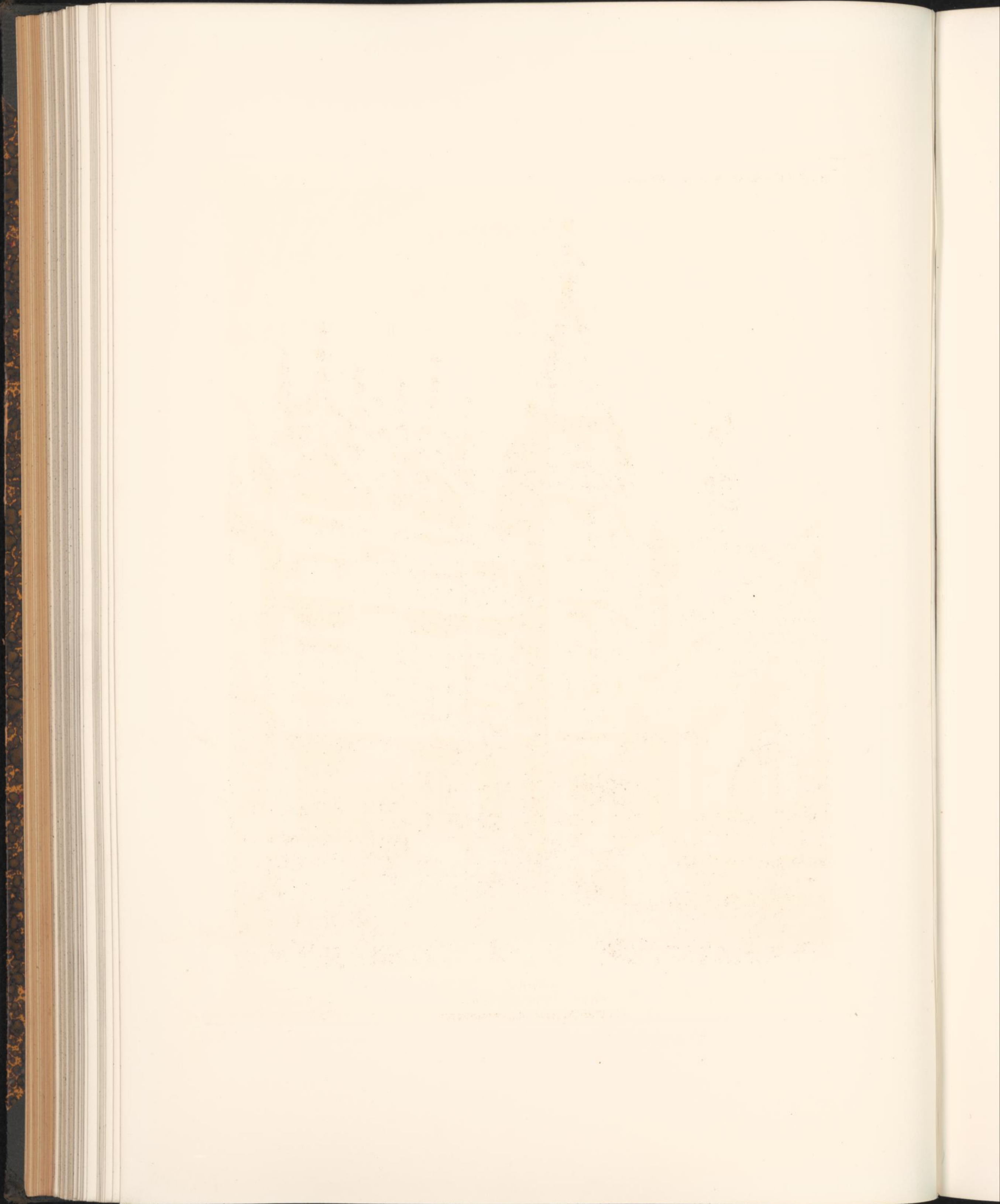
ROUEN
ANCIENNE CHAMBRE DES COMPTES
FACADE EXTERIEURE DE LA GALERIE





Uchit Desvign

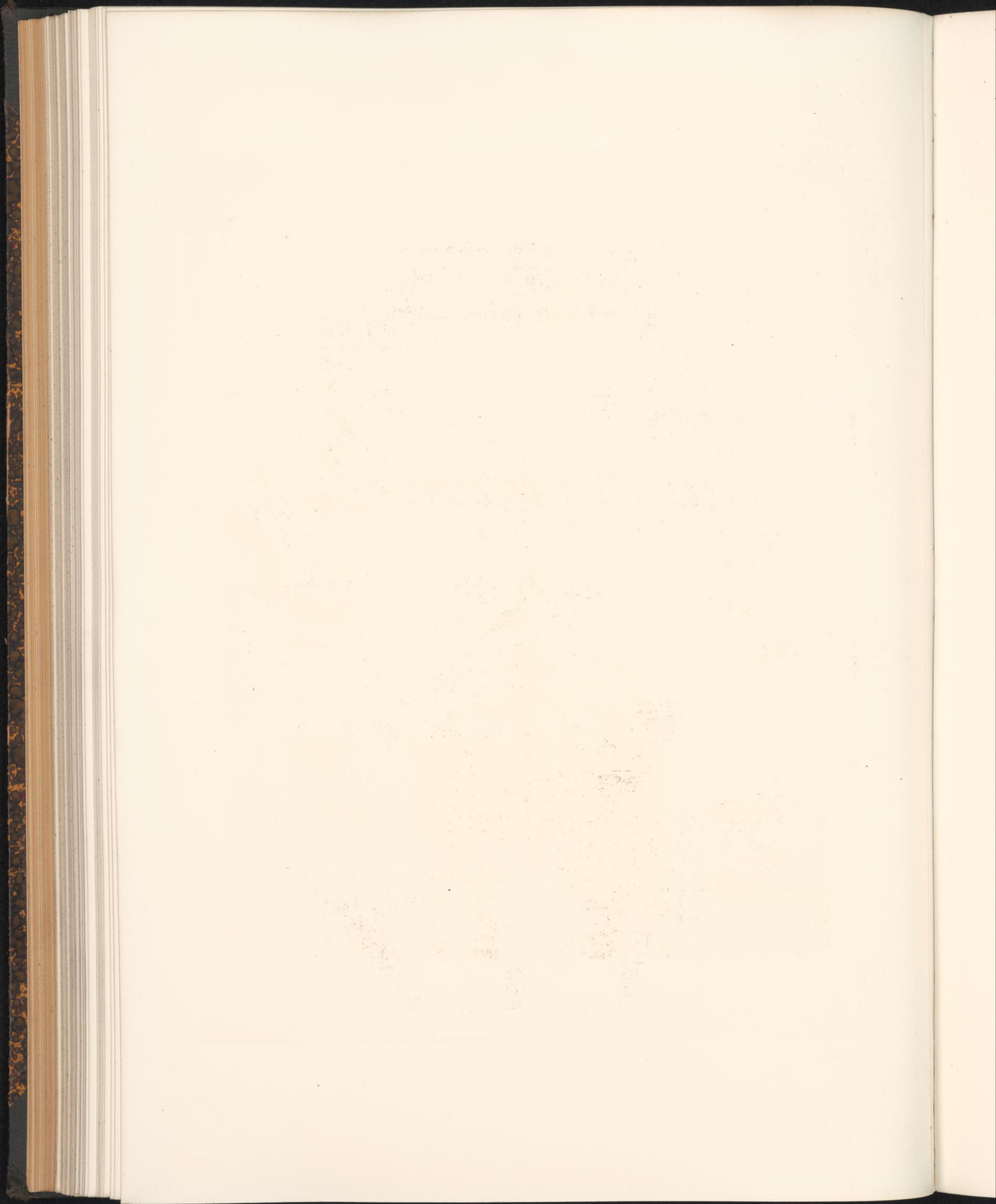
ROUEN
ANCIENNE CHAMBRE DES COMPTES
INTÉRIEUR DE LA GALERIE DU REZ-DE-CHAUSSEE





Cl. Chéreau

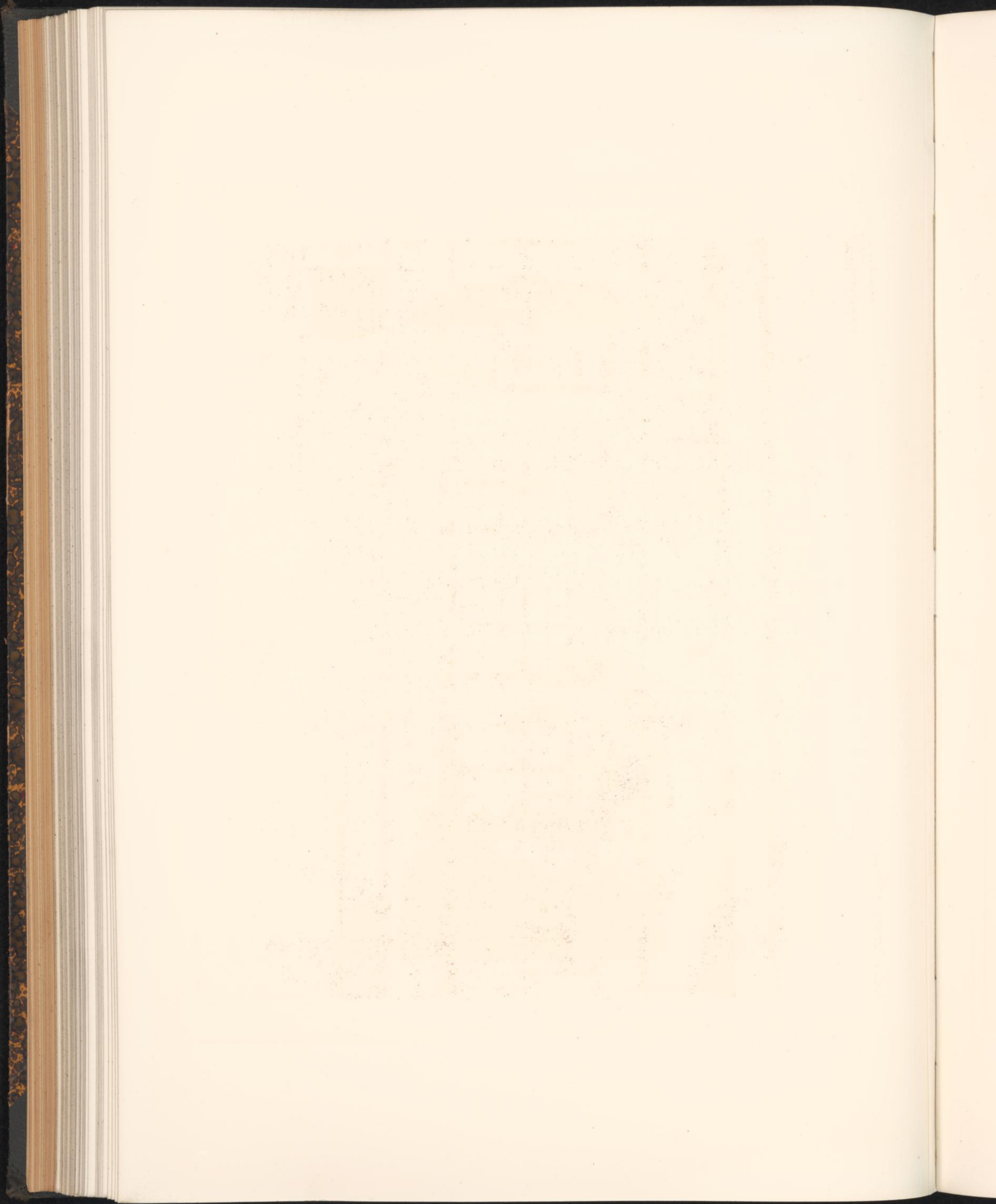
ROUEN
HÔTEL BOURGHEROULDE
COUR INTÉRIEURE. VUE D'ENSEMBLE

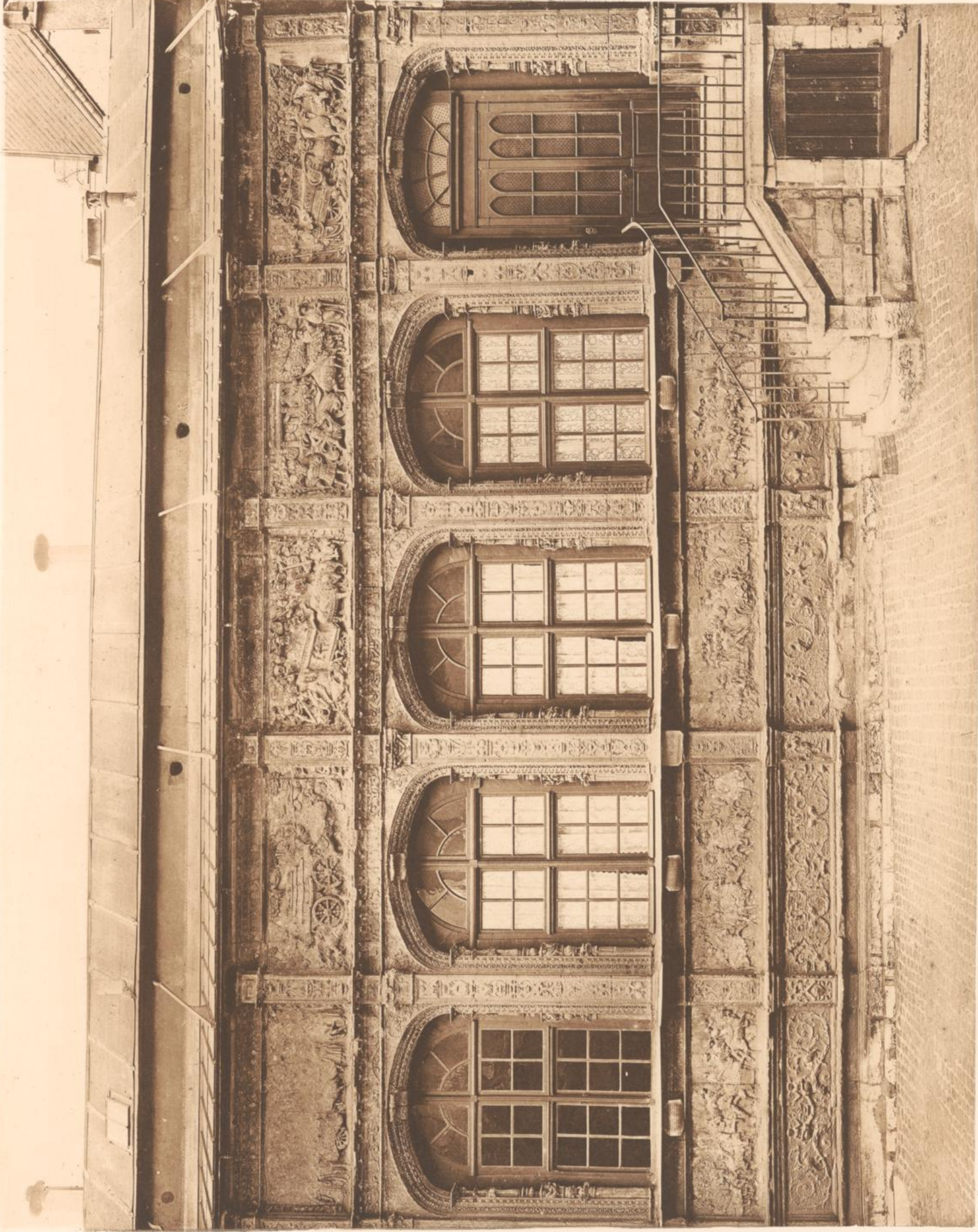




Cliché Devigon

ROUEN
HÔTEL BOURGTHEROULDE
REVERS DE LA PORTE D'ENTRÉE





ROUEN
HÔTEL BOURGHEROULDE
FACADE DE LA GALERIE

Clair Guépin

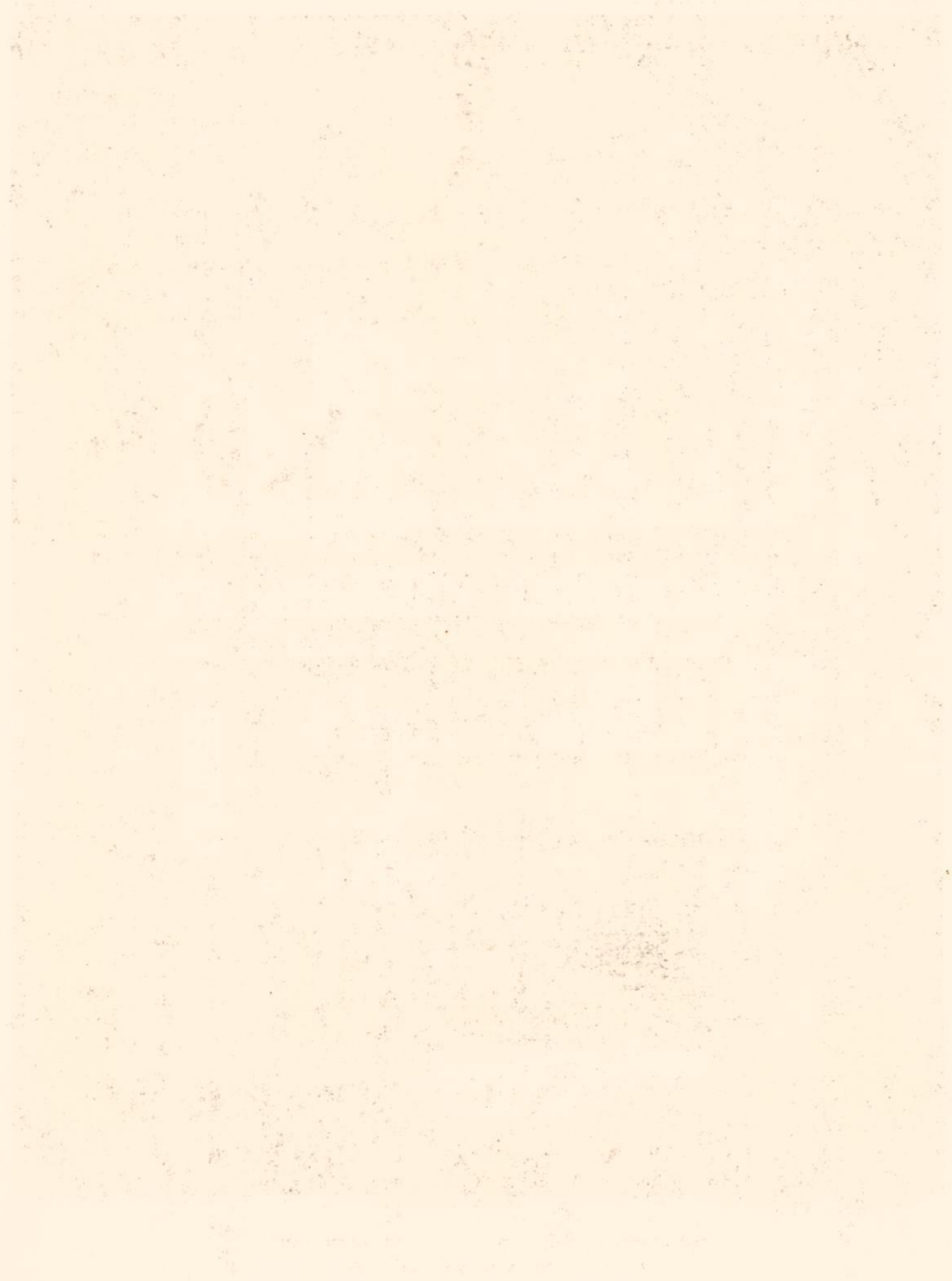
Faint, illegible text at the top of the page, possibly bleed-through from the reverse side.

Main body of faint, illegible text, appearing as a large, light-colored rectangular area on the page.

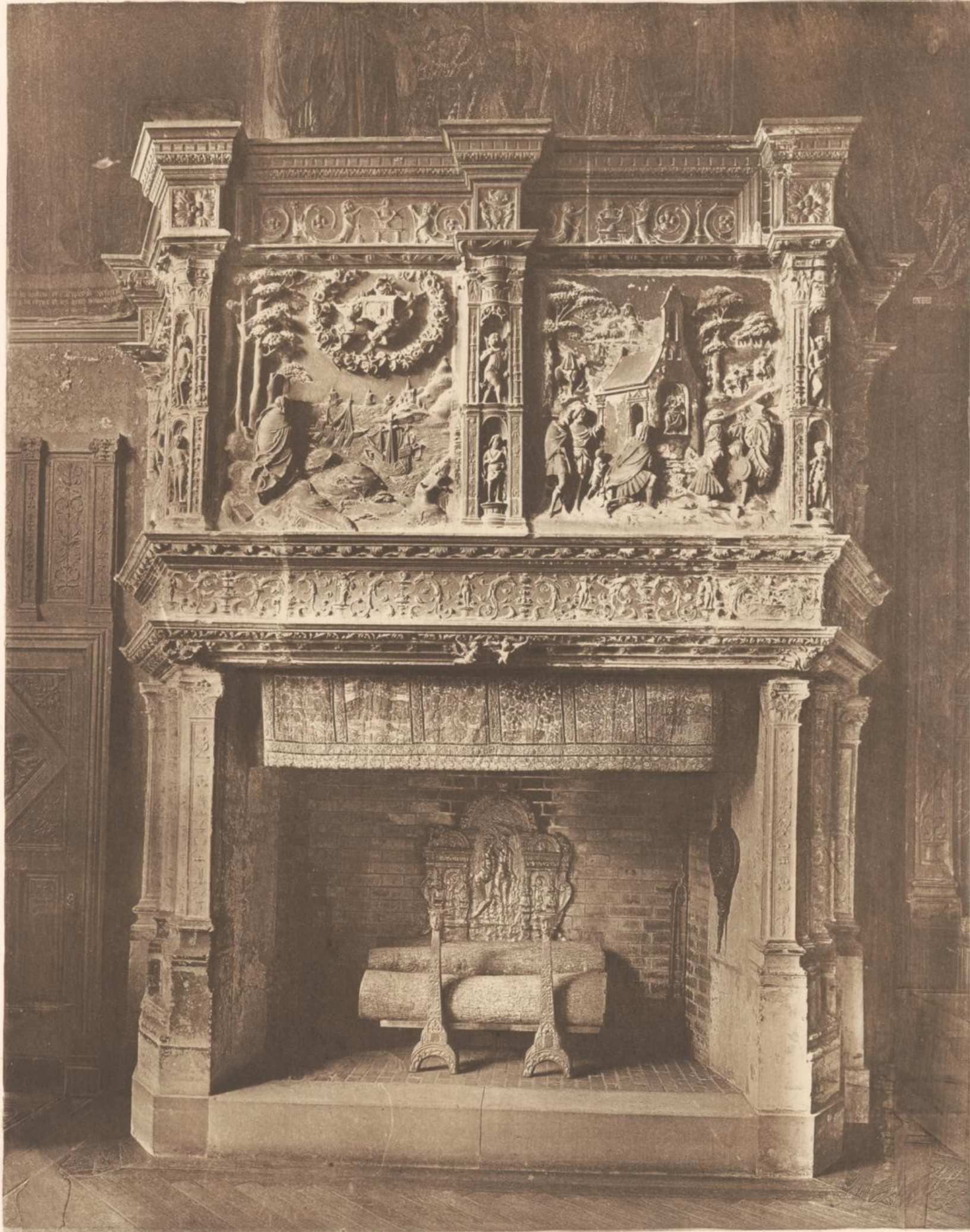


Licbe Chevojon

ROUEN
HÔTEL BOURGHEROULDE
DÉTAIL DE LA GALERIE

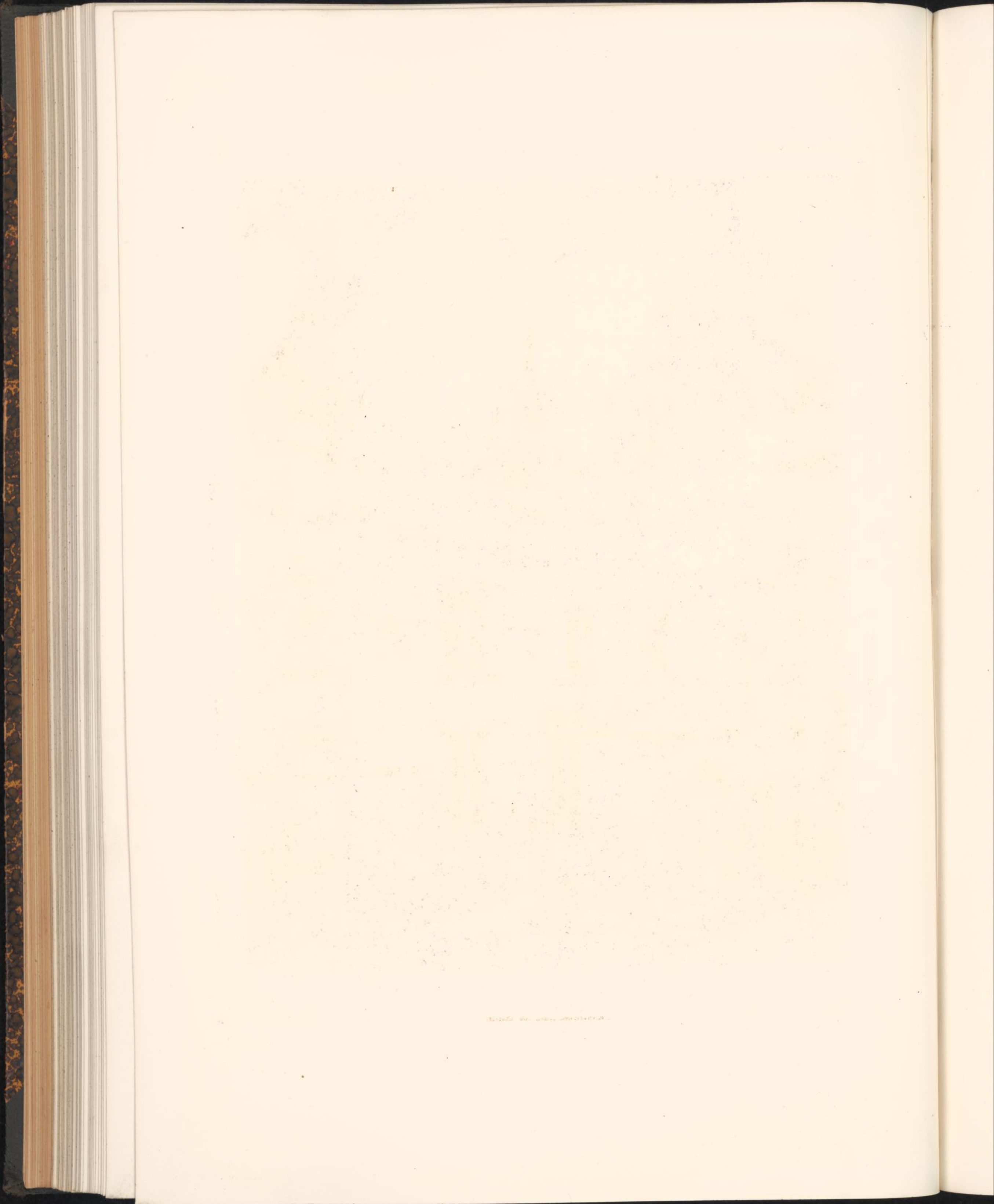


Faint vertical text or markings on the right edge of the page, possibly bleed-through from the reverse side.



Cl. Chevojon

CHEMINÉE PROVENANT D'UNE MAISON DE ROUEN
TRANSPORTÉE AU MUSÉE DE CLUNY



UNIVERSITÄT DÜSSELDORF