

Verbesserungen.

Seite

22, Beispiel zur zweiten Regel

$$9 - 5 + 6 = 10$$

$$5 + 2 - 4 = 3$$

$$14 - 3 + 2 = 13$$

30, 3tes Exempel: $6-2$ in $144-78+10$

31, Zeile 2: 60, anstatt 68

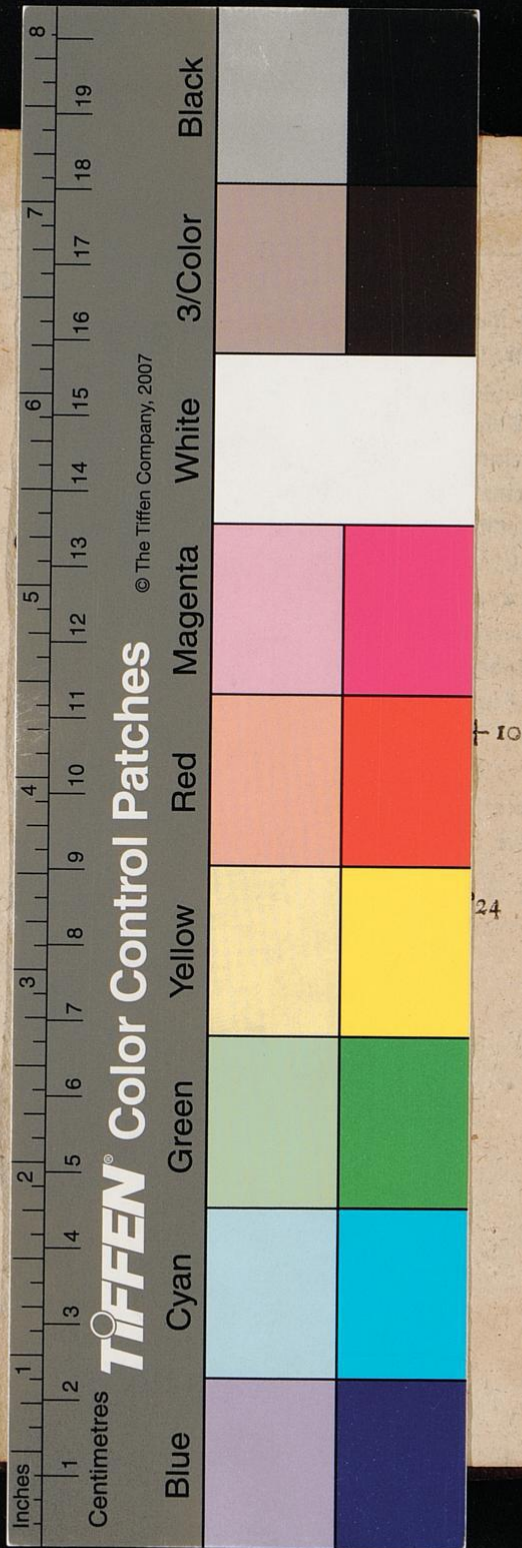
32, Aufgabe 6: qq , anstatt q^2

Zeile 10: 50, anstatt 5a

48, Zeile 3: $2\frac{1}{2}$, anstatt $1\frac{1}{2}$

56, Zeile 7: $-18\sqrt{24}$, anstatt $-6\sqrt{24}$

Zeile 8: $2\sqrt{24}$, anstatt $\frac{2}{3}\sqrt{24}$



Inches 1 2 3 4 5 6 7 8 9 10 11 12 13 14 15 16 17 18 19 20
Centimetres 1 2 3 4 5 6 7 8 9 10 11 12 13 14 15 16 17 18 19

TIFFEN® Color Control Patches

© The Tiffen Company, 2007

Blue	Cyan	Green	Yellow	Red	Magenta	White	3/Color	Black
[Blue patch]	[Cyan patch]	[Green patch]	[Yellow patch]	[Red patch]	[Magenta patch]	[White patch]	[3/Color patch]	[Black patch]

10
24