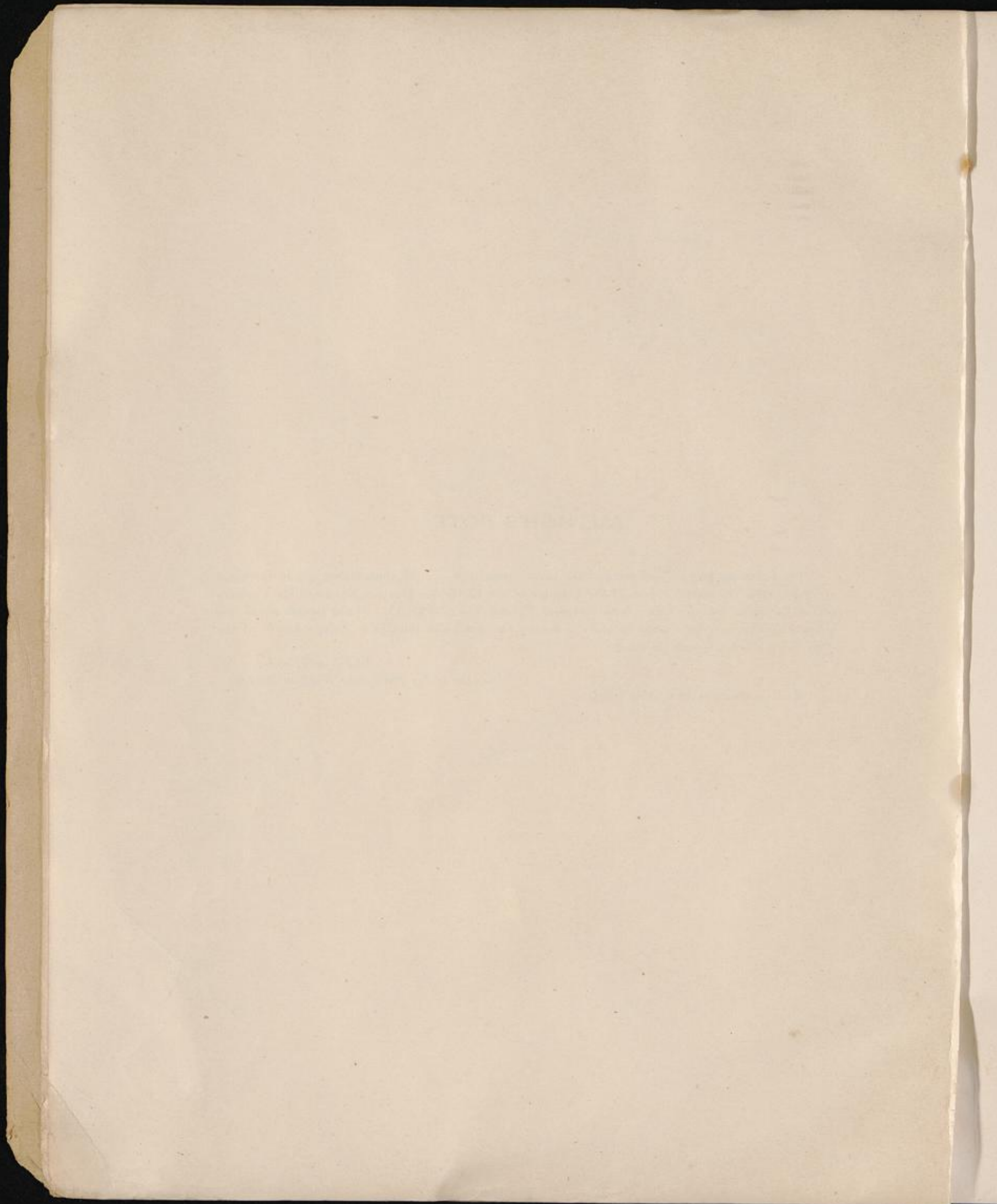


AUTHOR'S NOTE.

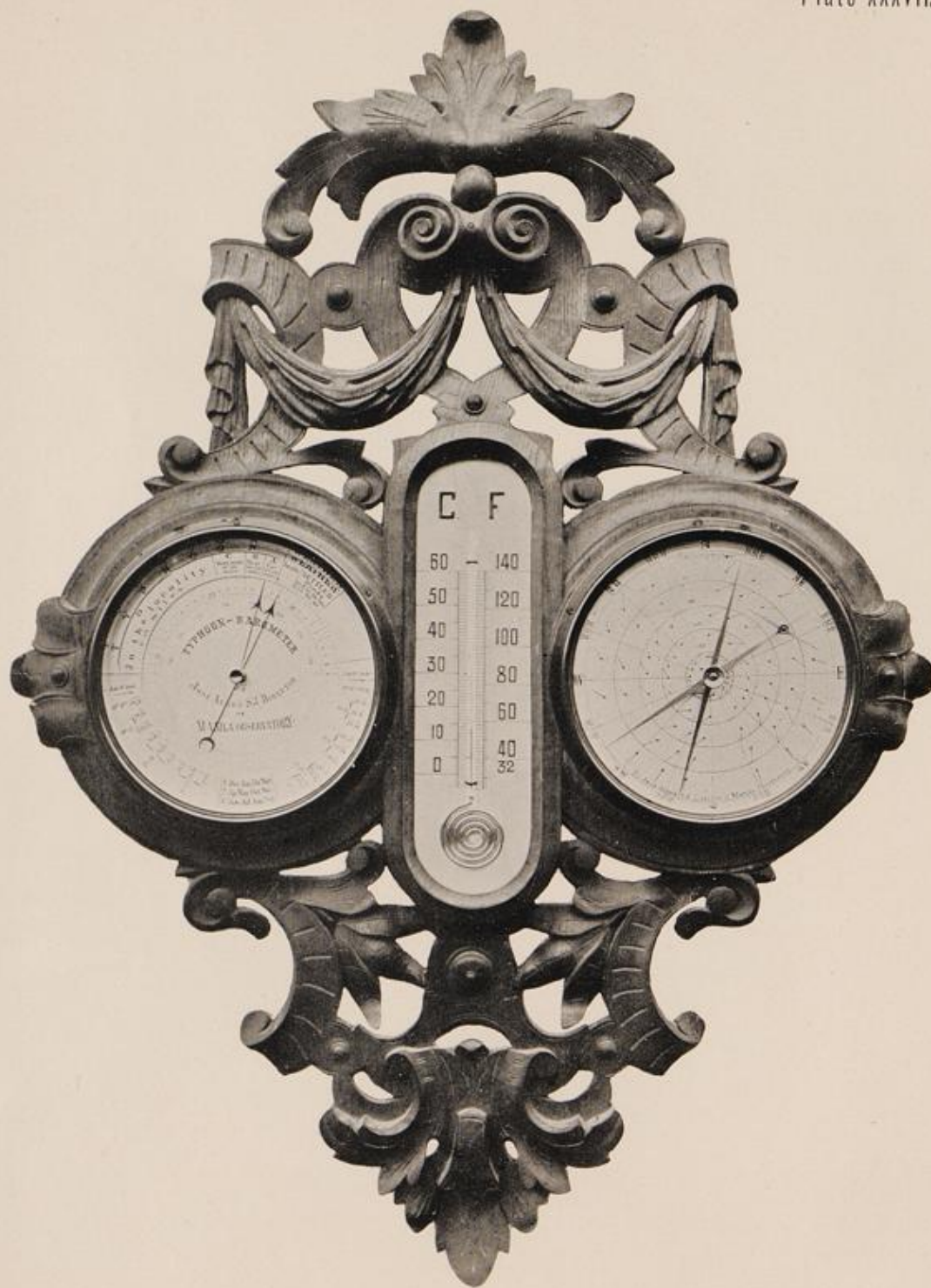
The following pages, descriptive of the barocyclonometer and its applications, are in the main a reprint from the special report of the Director of the Philippine Weather Bureau, "The Cyclones of the Far East," of which they form Chapters VI and VII of Part II. Slight modifications and a few additions have been made in order to render the pamphlet intelligible independently of the work from which the same is taken.

José ALGUÉ, S. J.,
Director of the Philippine Weather Bureau.

MANILA OBSERVATORY, *May, 1904.*







THE BAROCYCLONOMETER.