

d. OECONOMICUS.

a. Instrumentalis.

b. Pastoralis.

c. Tinctoria.

d. Culturæ.

1. Cerealia.

2. Macellum.

3. Officinalis.

4. Arboretum, Frutetum.

5. Pomona.

6. Pascua.

8. CLASSIUM CHARACTERES.

- | | | | |
|---------------|---------|-----|--|
| 1. Monandria, | Stamen | 1. | } Aequalia omnia, in flore
hermaphrodito. |
| 2. Diandria, | Stamina | 2. | |
| 3. Triandria | — | 3. | |
| 4. Tetrandria | — | 4. | |
| 5. Pentandria | — | 5. | |
| 6. Hexandria | — | 6. | |
| 7. Heptandria | — | 7. | |
| 8. Octandria | — | 8. | |
| 9. Enneandria | — | 9. | |
| 10. Decandria | — | 10. | |
11. Dodecandria, stamina 12 — 19. in flore hermaphrodito.

12. Icosandria, stamina 20 communiter, saepe plura, (non receptaculo), calycis lateri interno adnata.



13. *Polyandria*, stamina 20 — 1000, *receptaculo inserta* in eodem cum pistillo flore.
14. *Didynamia*, stamina 4, quorum duo proxima longiora, in flore hermaphrodito *Ringente*.
15. *Tetradynamia*, stamina 6, quorum 4 longiora, 2 autem opposita breviora, in flore hermaphrodito *cruciato*, pericarpio *siliquoso* vel *siliculis*, *nectario* saepe filamentis brevioribus infidente.
16. *Monadelphia*, stamina filamentis in unum corpus coalita, in flore *pentapetalo* at cohaerente filamentis coalitis, Receptaculo saepe *columnari*, feminibus *reniformibus*.
17. *Diadelphia*, stamina 10 filamentis in duo corpora coalita, (simplici et novem) in flore *Papilionaceo*, Pericarpio *Legumineo*.
18. *Polyadelphia*, stamina filamentis in tria vel plura corpora coalita.
19. *Syngenesia*, stamina antheris (raro filamentis) in cylindrum coalitis, in floribus compositis, flofculis aut tubulosis, aut ligulatis, aut radiatis, et in quibusdam simplicibus; Floribus hermaphroditis cum masculis aut femineis in eadem planta positis.
2. *Polygamia aequalis*, constat ex multis flofculis staminibus et pistillis instructis, horum Flores sunt *Flofculosi*.
1. *Semiflofculosi*, i. e. ligulati.
 2. *Capitati*.
 3. *Discoidei*.

b. Po-

b. *Polygamia spuria*, flosculis hermaphroditis discum occupantibus, margine cincto flosculis femineis, at staminibus deficientibus,

a. *Polygamia superflua*, flosculis *Disci hermaphroditis* stigmatibus instructis et femina proferentibus; floribus quoque *femineis radii* seminiferis.

1. *Discoidēi*.

2. *Semiflosculosi*.

3. *Radiati*.

b. *Polygamia frustranea*, flosculis *disci hermaphroditis* stigmatibus instructis et seminiferis; flosculis vero *radii* sine stigmate, et ideo sine semine.

c. *Polygamia necessaria*, flosculis *disci hermaphroditis* defectu stigmatis non seminiferis; flosculis *femineis radii* perfecte seminiferis.

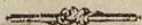
d. *Polygamia segregata*, calycibus floriferis pluribus, communi calyce in unum florem aggregatis.

e. *Monogamia*, flosculo hermaphrodito syngenesista simplici.

20. *Gynandria*, stamina pistillis (non receptaculo) insident.

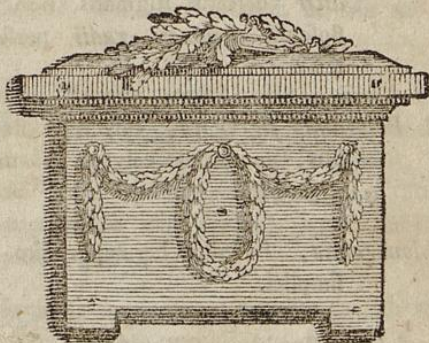
21. *Monœcia*, Flores masculi et feminei in eadem planta, sed in diversis floribus.

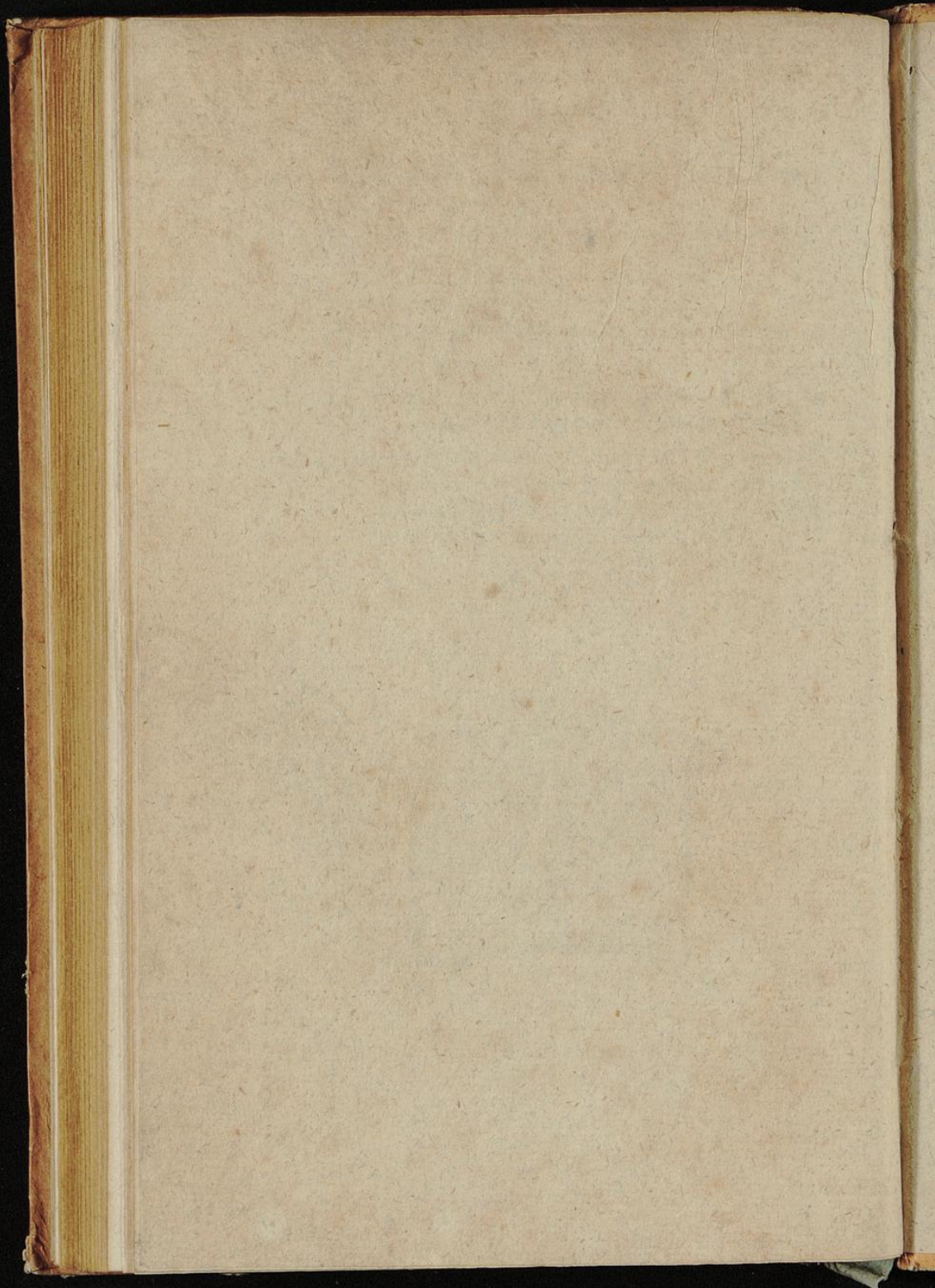
22. *Dioec.*

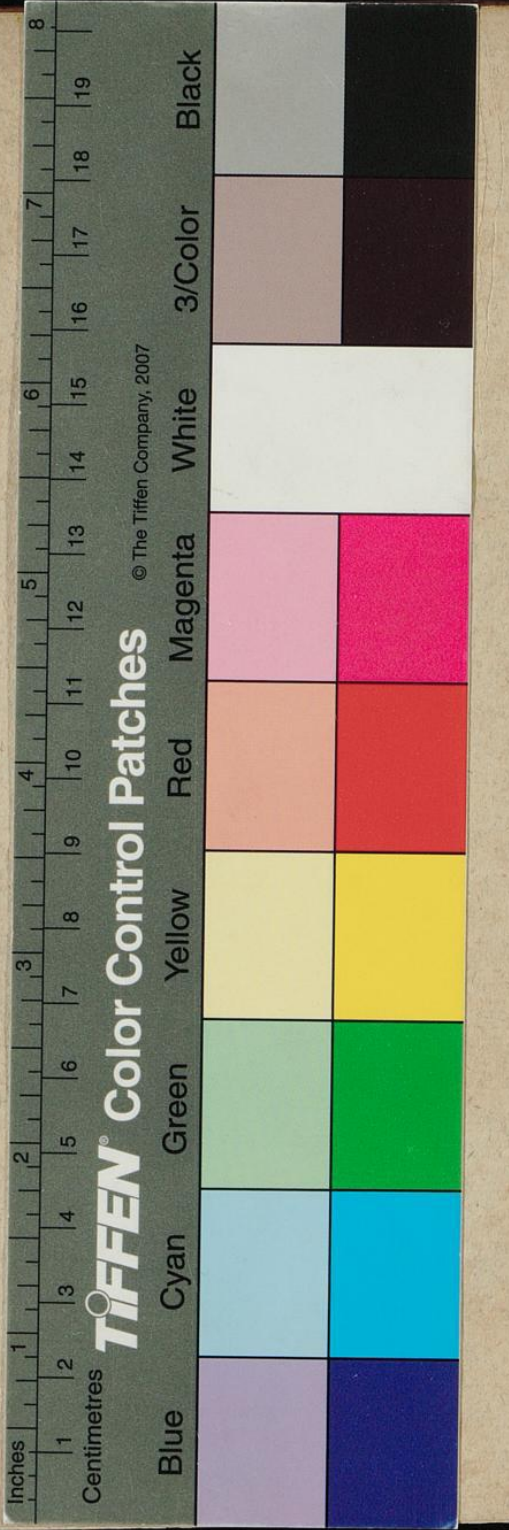


22. *Dioecia*, Flores masculi in diversa planta a femineis pronascuntur.
23. *Polygamia*, Flores hermaphroditi et masculi aut feminei, in eadem specie.
1. *Monoecia*, in eadem planta.
 2. *Dioecia*, in diversis plantis, cum masculis vel femineis.
 3. *Trioecia*, Masculi in diversa planta; Feminei in diversa; Hermaphroditi quoque in diversa.
24. *Cryptogamia*, Flores intra fructum, vel singulari modo occultati; vel oculis nudis partibus genitalibus nunquam fere discernendis, ut in Filicibus, Muscis, Algis et Fungis.

F I N I S.







© The Tiffen Company, 2007

TIFFEN® Color Control Patches

Inches
1 2 3 4 5 6 7 8

Centimetres
1 2 3 4 5 6 7 8 9 10 11 12 13 14 15 16 17 18 19

Blue

Cyan

Green

Yellow

Red

Magenta

White

3/Color

Black