

Tab. I

Sheffs

dem gott gnades Chiffierung, Inhaber dieleser

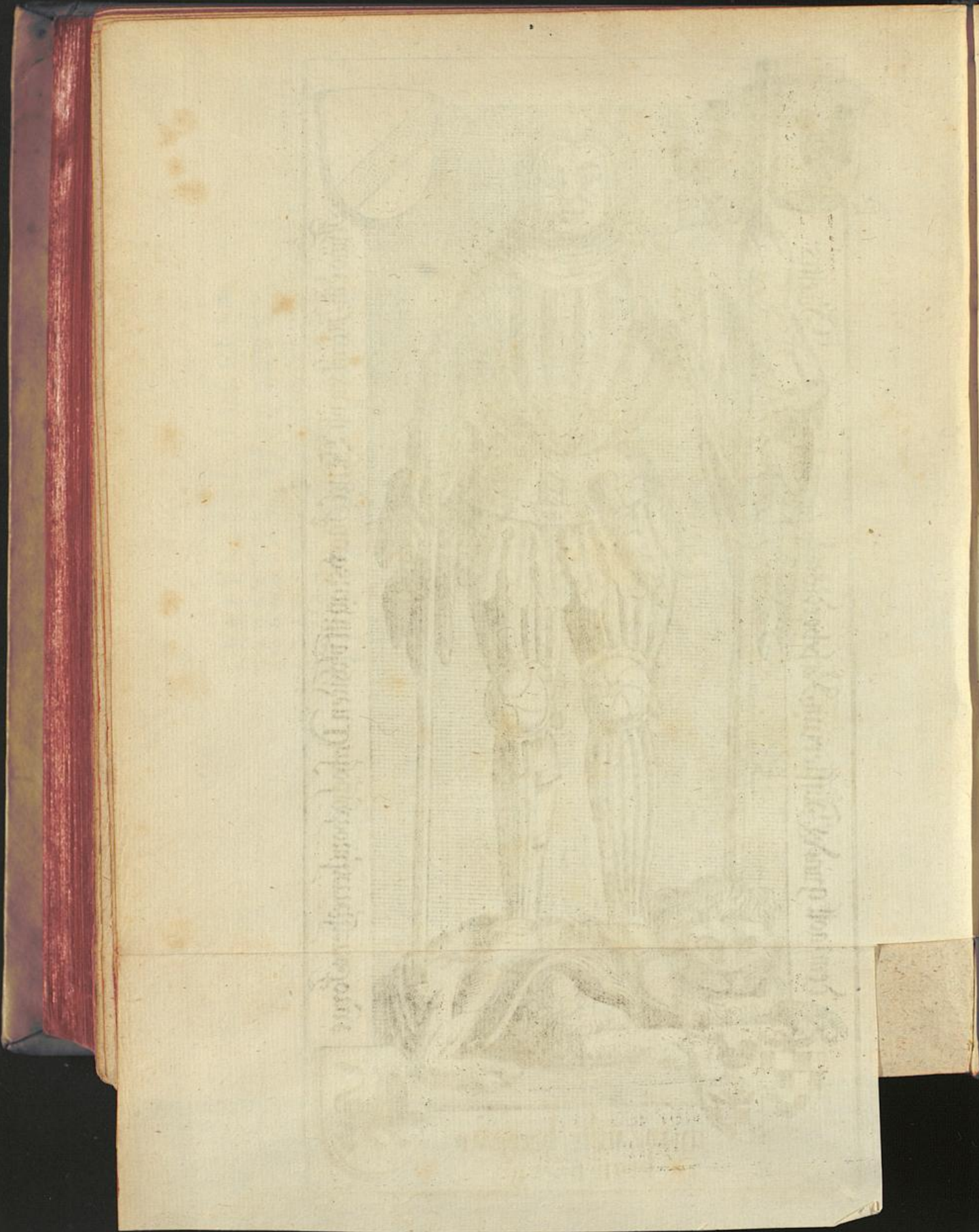
Simon vñ. Jernixen. vñ. Sarel Jacobs tag iß fuffen Denhofghebon herre herre forre

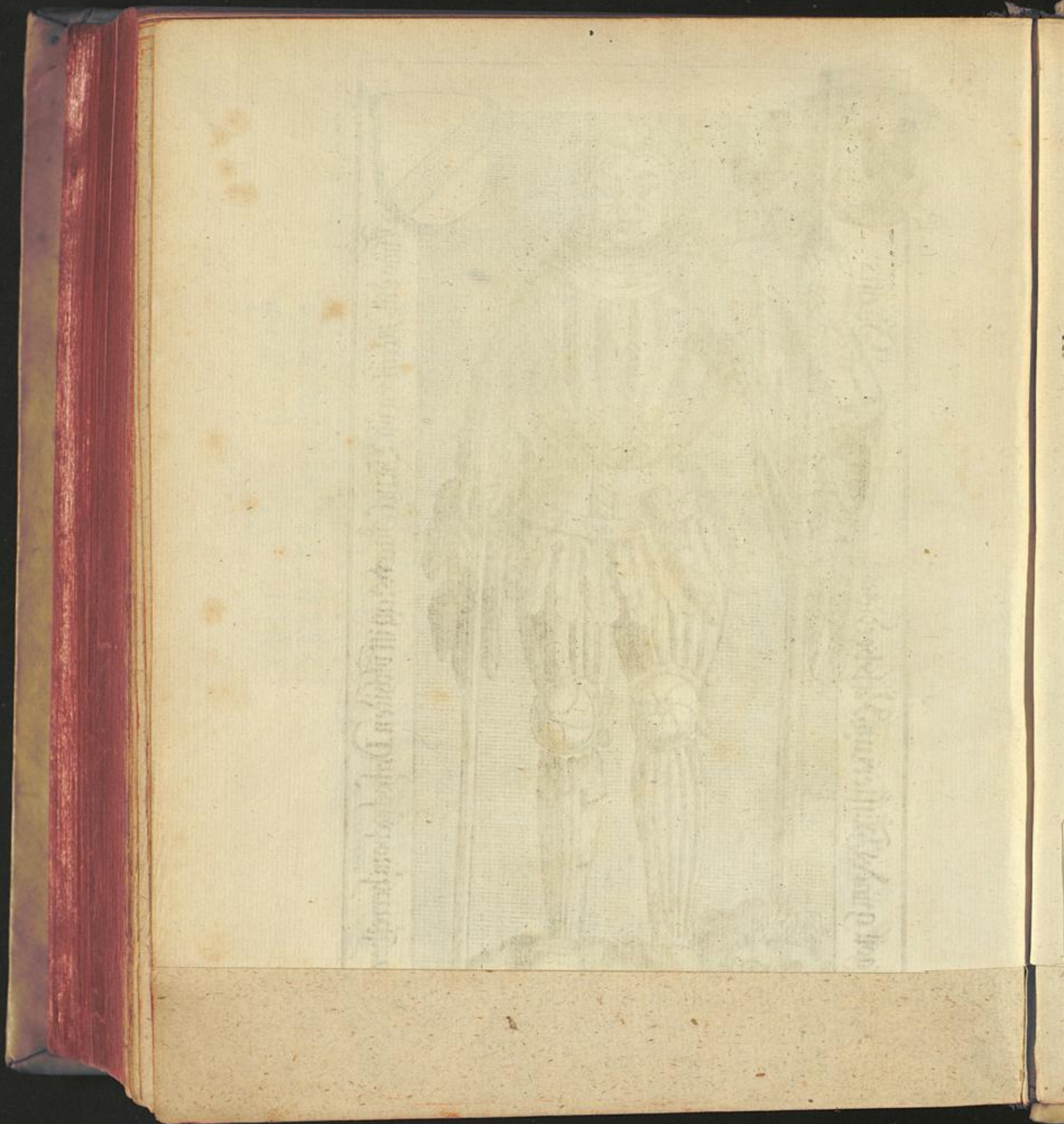


grave unde herre by
hennenberg

C. F. Schmitt delin.

Hilmenf







ressin vnde Straw zu henberg. Duffern dieses

Seeser vff a hent i punitiois ma rissel schen die hat





proprietate sua in pace sua et in pace sua

et in pace sua et in pace sua

et in pace sua et in pace sua





Proprietatis in hoc loco
 seu relictionis in d. d. m. s. s. s.

causis in d. d. m. s. s. s.
 seu relictionis in d. d. m. s. s. s.

Tab
III.

ey dem got gnedig und barmherziglich sey.



Amo hie-iger. hie. an sant valentins thent



Tab.
III.

und Herr zu Henneberg dem Got gnedig und barmherziglich sey.



Herrn von Nassau Herr von Sont Valentins Abend ist verchieden der

hochgebom Herr
her hernam grave

Wob wochendel 1000 si herold zentriches hochm. vch. i. 1000. 1000. 1000.



1000. 1000. 1000. 1000. 1000. 1000. 1000. 1000. 1000. 1000.



1000. 1000. 1000. 1000. 1000. 1000. 1000. 1000. 1000. 1000.

148

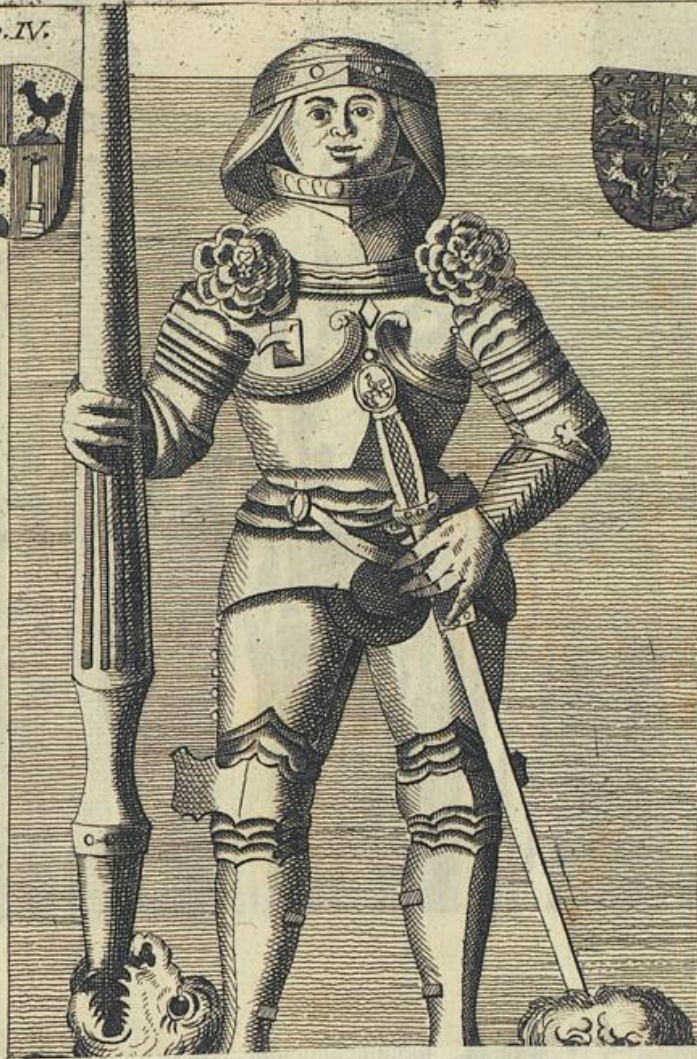
Die Beschreibung des hiesigen Landtweyden



von dem Landtweyden

Tab. IV.

Herzog-Grove und Herzog-berneberg. dem Solgmeig seyde me re

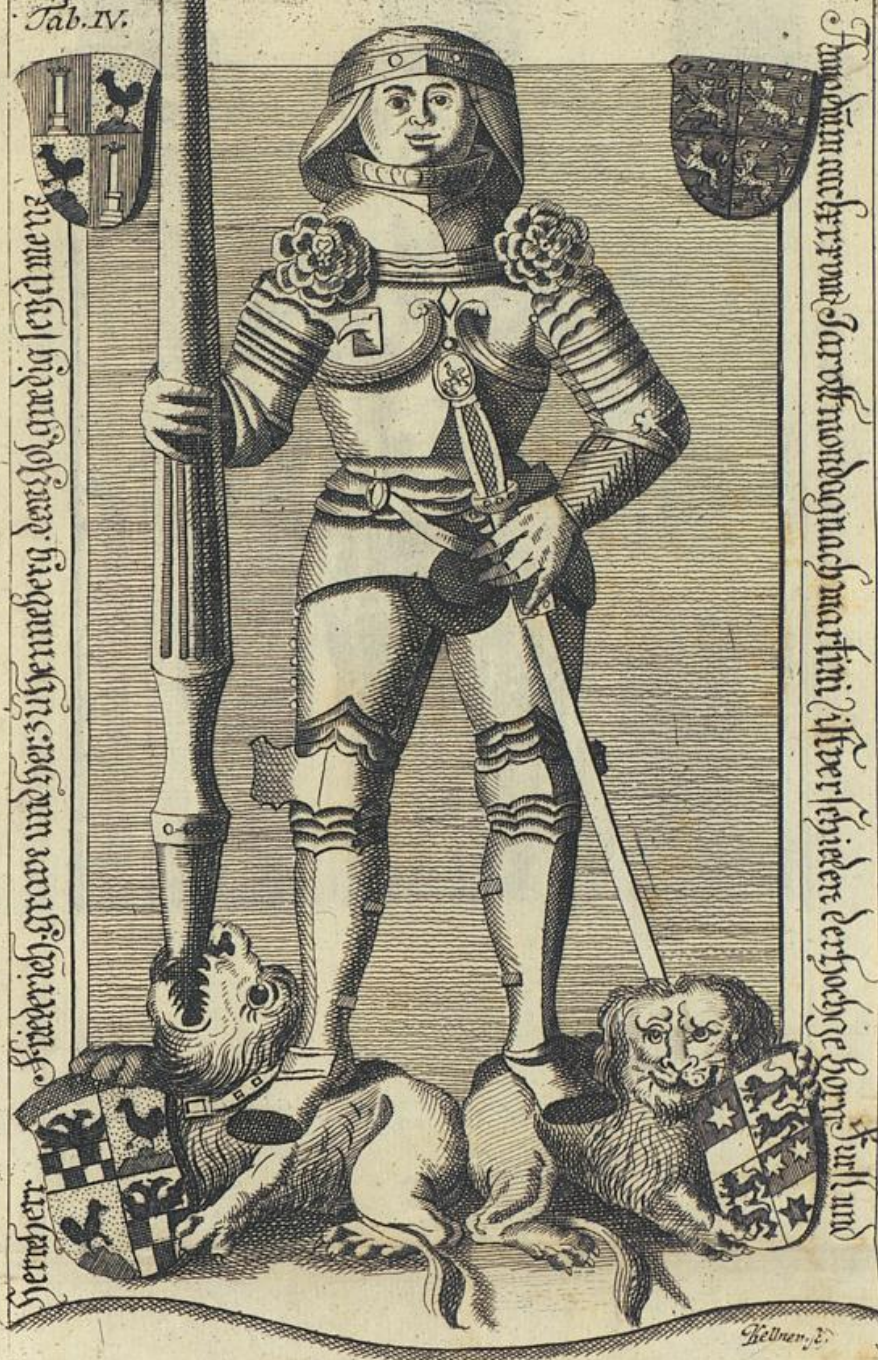


Am Sonntag nach dem Martini. In der Schieren der Hoehn

Tab. IV.



Friedrich-Graue und Herz zu Schemberg. der sol gnedig sey dem
Herzerr



Friedrich-Graue und Herz zu Schemberg. der sol gnedig sey dem
Herzerr

Hellmer. d.

Santus et venerabilis pater noster
 Johannes Cantuariensis Archiepiscopus
 qui obiit anno domini millesimo
 centesimo octavo die octavo
 mensis augusti



1588

Das ist die Beschreibung
 des Heiligen Johannes
 Cantuariensis Archiepiscopi
 welcher am 8ten Augusti
 1588 starb

1588

Sanctus et venerabilis pater et dominus noster
Sicut in Evangelio dicitur et dicitur in Evangelio



et dicitur in Evangelio et dicitur in Evangelio
et dicitur in Evangelio et dicitur in Evangelio





Hochgebormt Für-

stin u. Frau Frau

in den sechsten tag des Monats Aprilis. ist verchieden die



Elisabeth. geboren von Herzogin u. Grafen zu Saxe



Handwritten text in Gothic script, likely a name or title, positioned above the central figure.



Handwritten text in Gothic script, likely a name or title, positioned below the central figure.





Tab. VI.



1. Herrlicher ist der hoch geporn.



her-herre-ott-grave-und-

Herr-zu Henenberg-verstehen-dem Got gwei



Tab. VI.

her-herre-olt-grave-und-

Herr-zu Henenberg- verwichen- dem Got gnedig sey- Amen &

Anno. dñi. m. cccc. und. in. dem. hundert. und. vier. hoeh. geporn.



Der Herr von ...

... Herr ...

... Herr ...

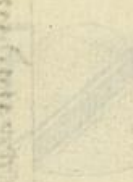


Handwritten text in a medieval script, likely Gothic, running vertically down the left side of the page. The text is partially obscured by the central illustration.

Handwritten text at the top of the page, above the central illustration.



Handwritten text in a medieval script, likely Gothic, running vertically down the right side of the page. The text is partially obscured by the central illustration.



MDVII

AMXXV. TAG APRILIS STARB
DIEDVRCHLEVCHTIG. HOCHCEBORN
FVRSTIN FRA FRA ELISABET KVR
FVRSTLICH GEBORN MARGRE.
VIN ZV BRANDENBURC GREVIN
VND FRAV ZV HENNEBERG.
DER GOT GNAD AMEN.

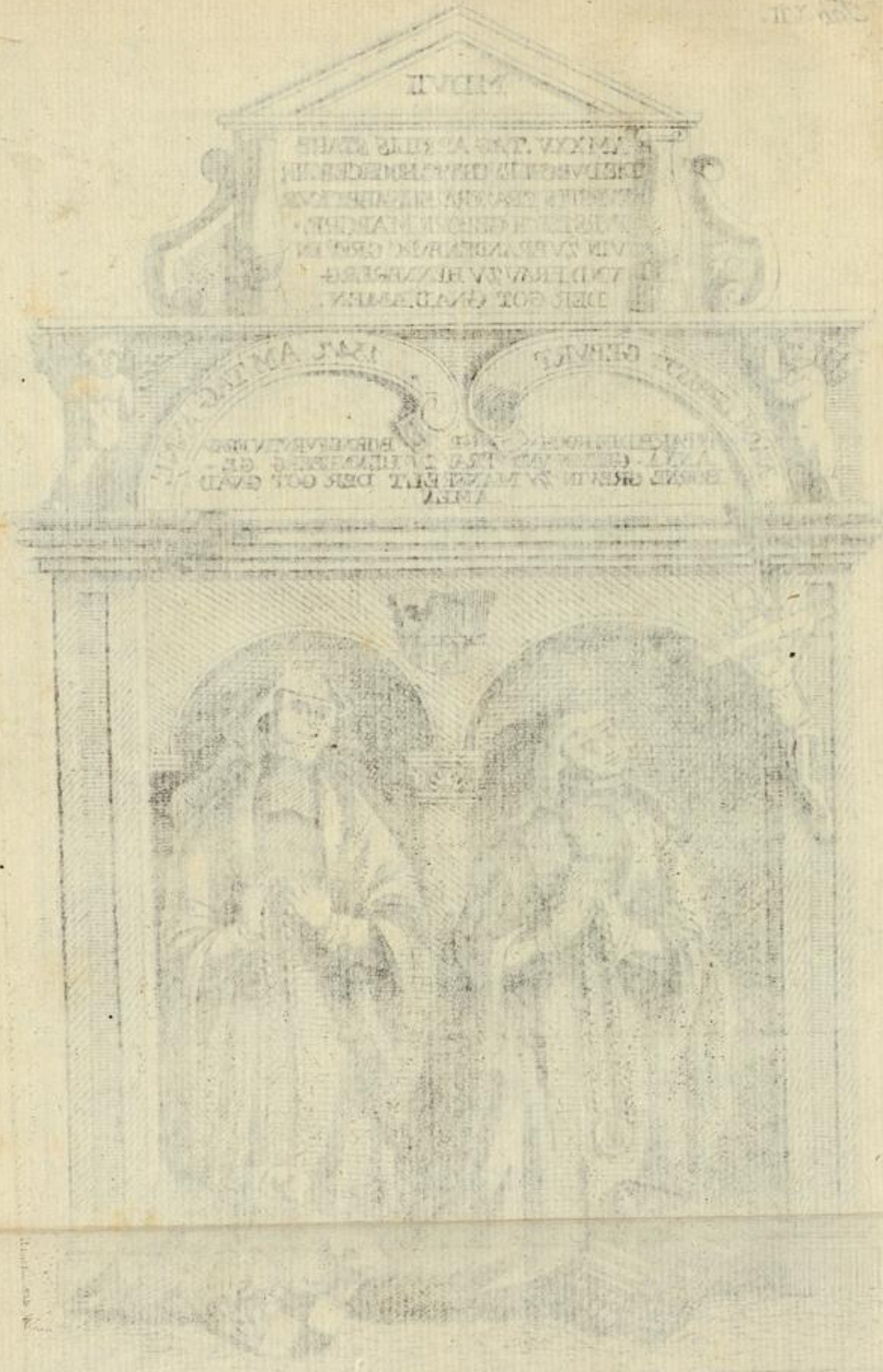
NACH CHRISTI GEBVRT

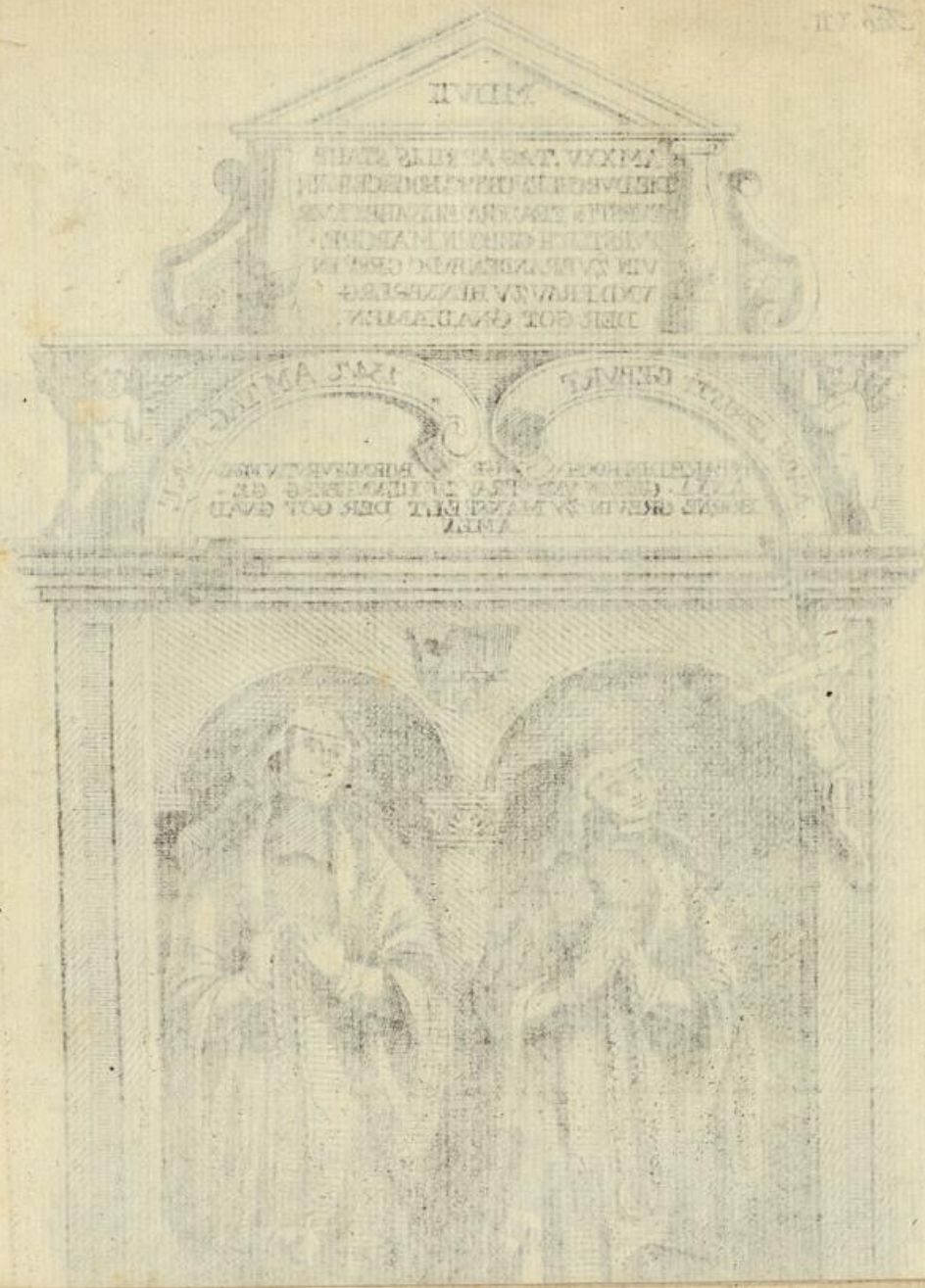
1547. AM TAG ANNE

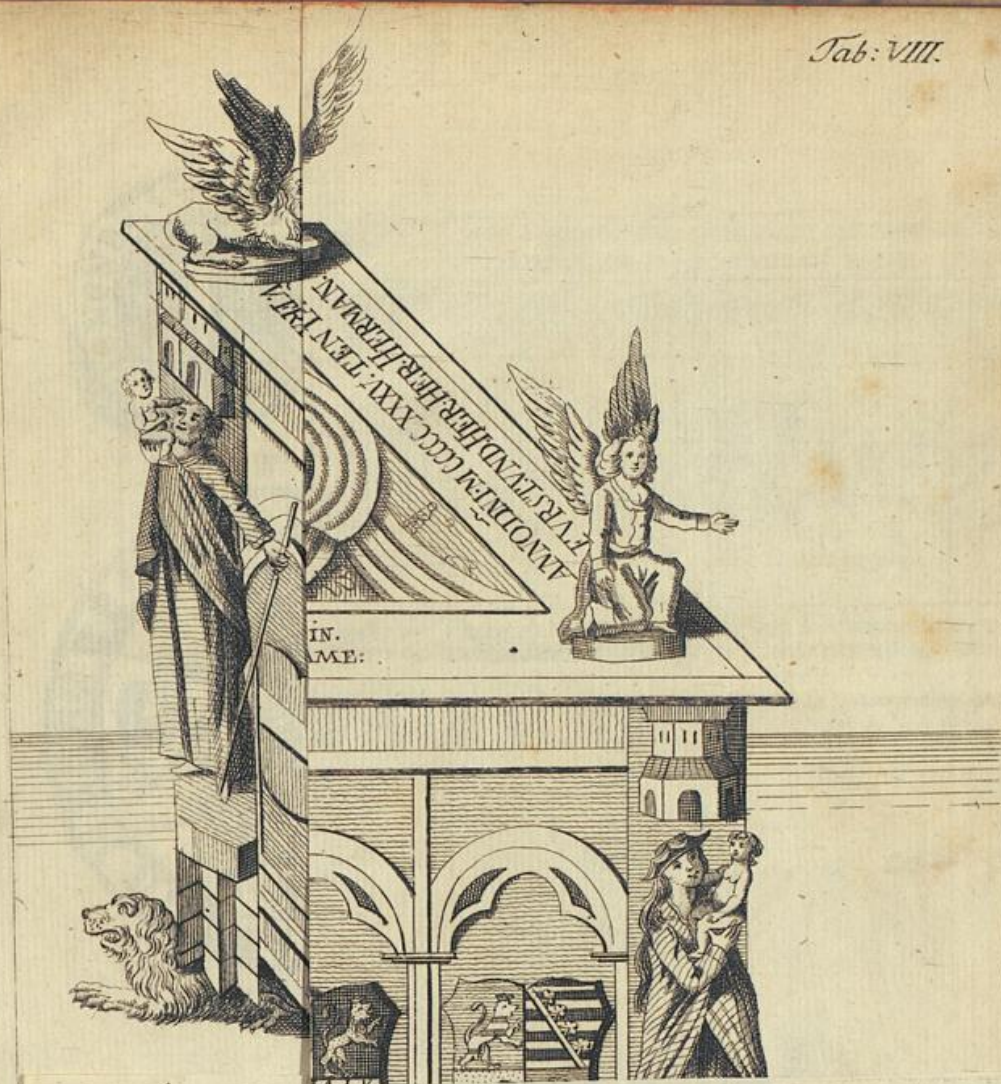
STARB DIE HOCHGEBORENE FVRSTIN FRAV
ANNA. GREVIN VND FRAV ZV HENNEBERG. GE-
BORNE GREVIN ZV MANSE EILT DER GOT GNAD
AMEN

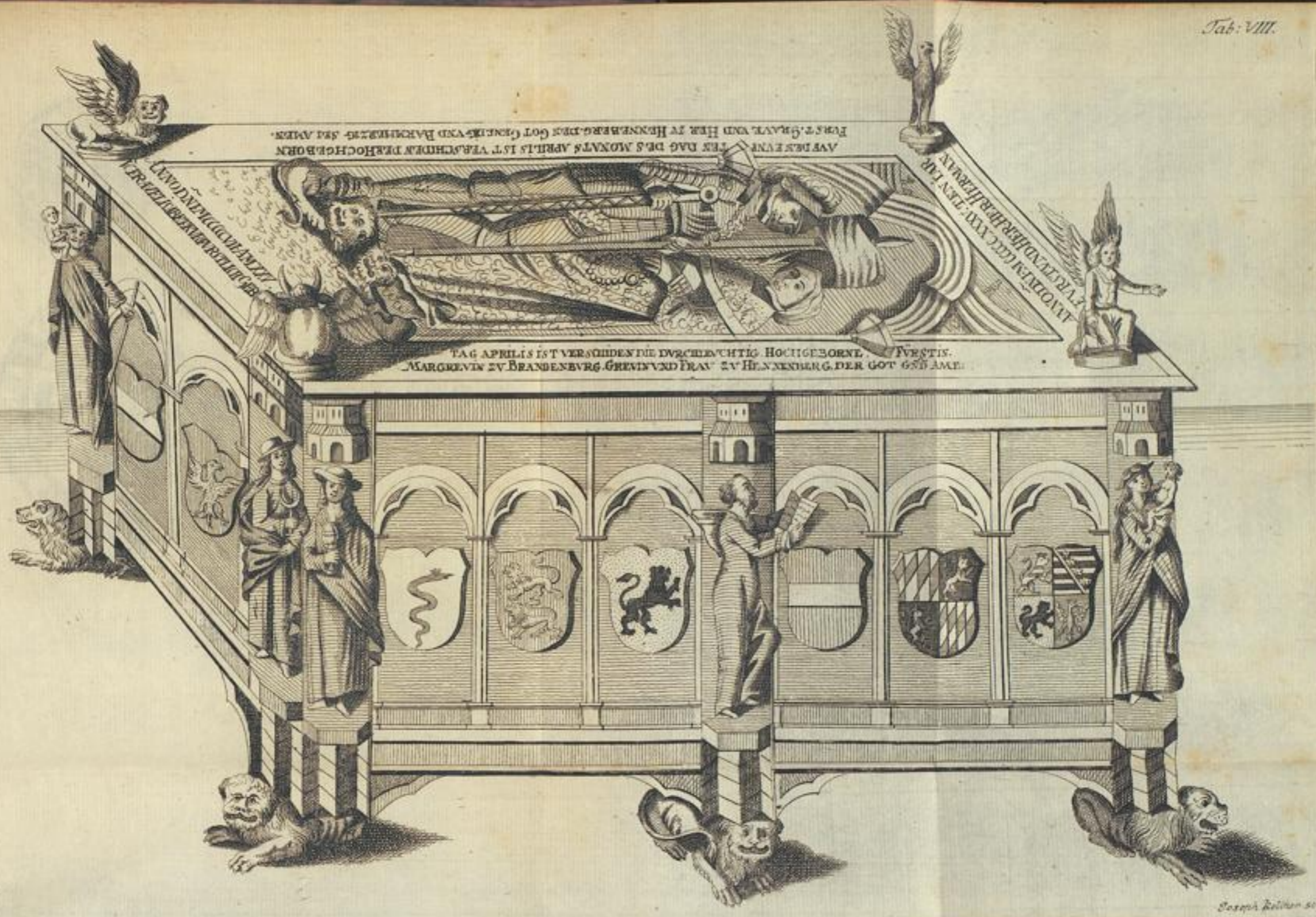




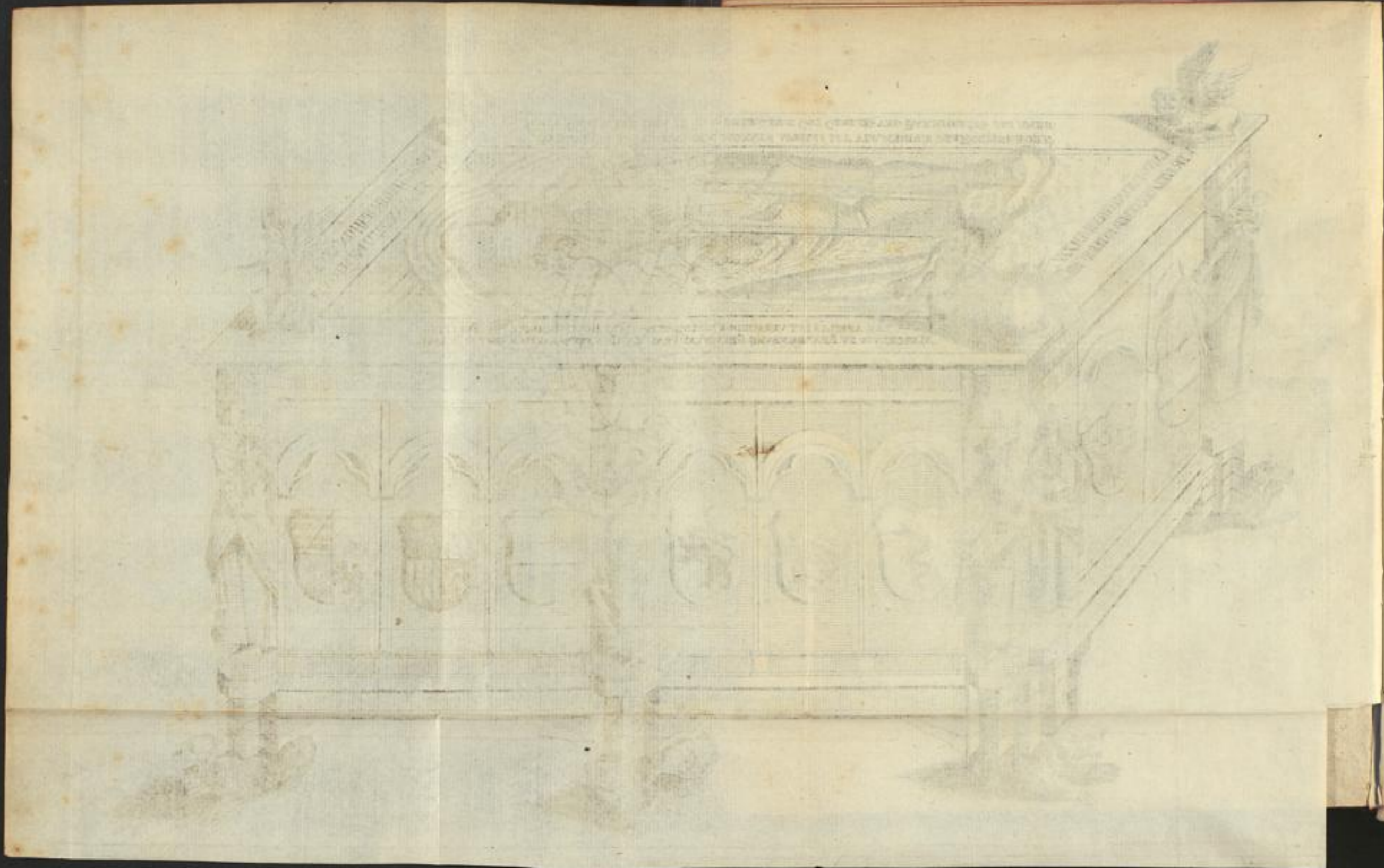


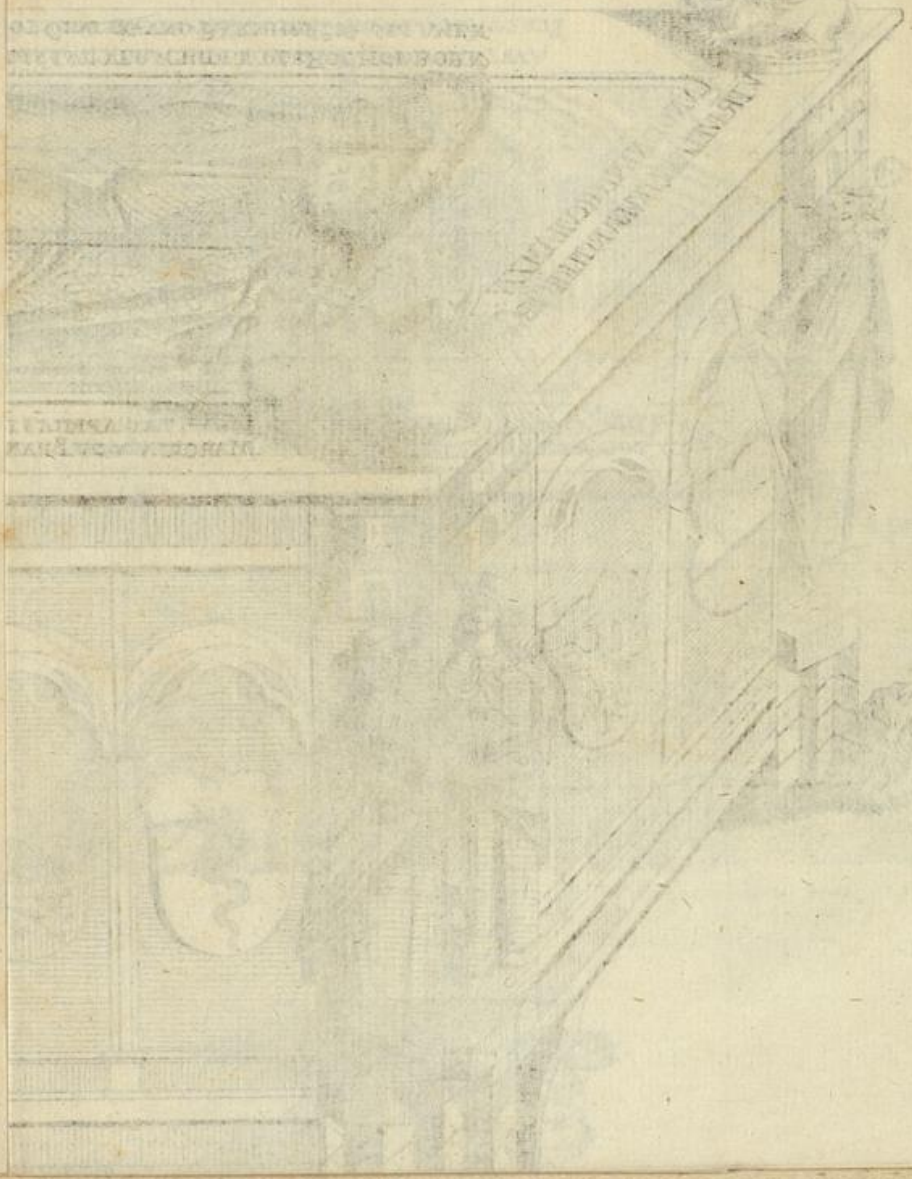






Joseph Kallman sc. Strick







N^o. 1.

a. 1186. N^o. 4.



a. 1315.



Tab. IX.



N^o. 1.

a. 1186.



N^o. 2.

an. 1202.



N^o. 3.

a. 1287.



N^o. 4.

a. 1315.



N^o. 5.

a. 1378.



N^o. 6.

a. 1394.



N^o. 7.

a. 1521.



N^o. 8.

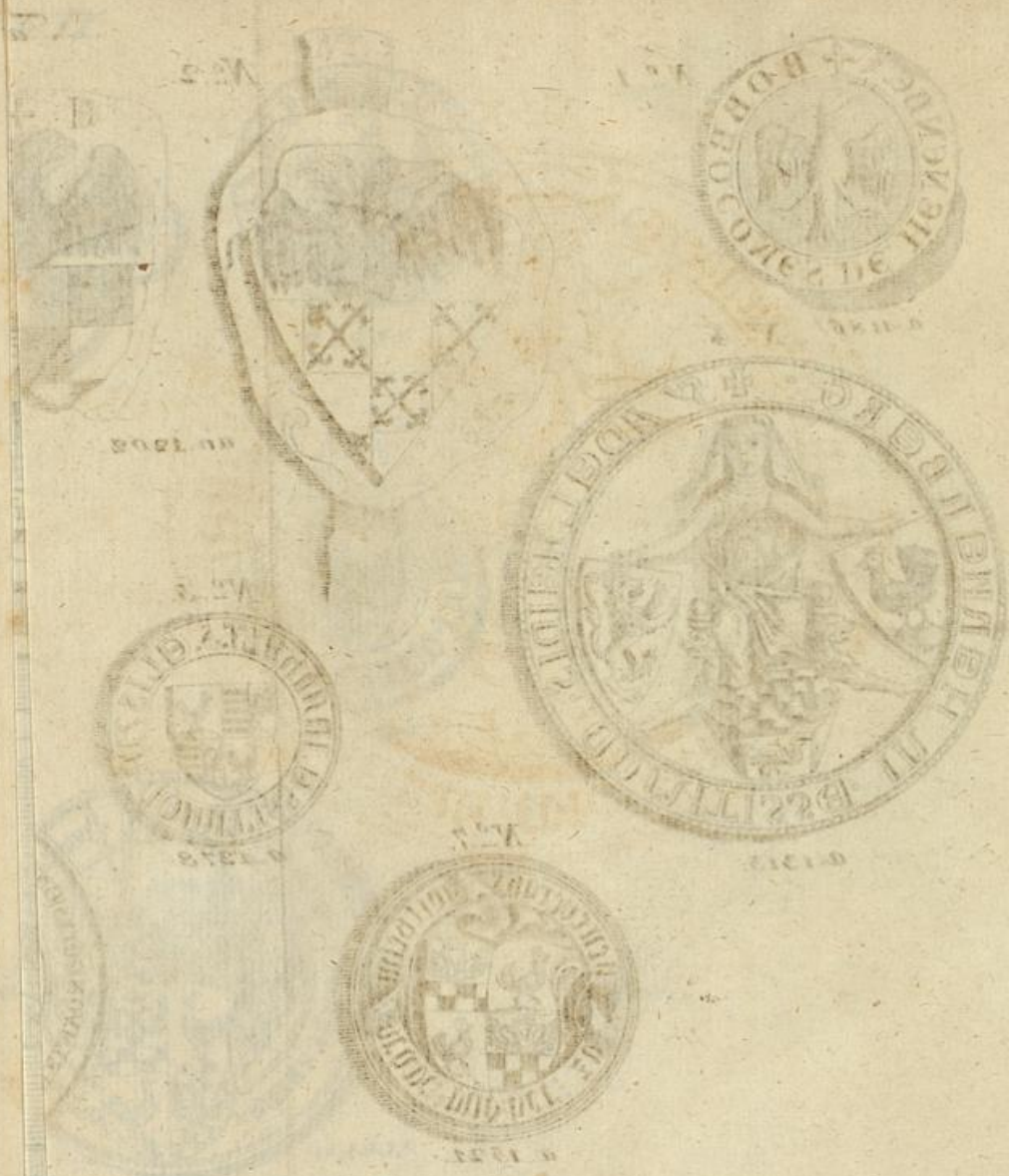
a. 1555.

XI 157



20. diploma





90 diploma

Tab. X.



148x



N^o 1.



N^o 5.



N^o 6.



N^o 8.



Beck, f.

N^o 1.



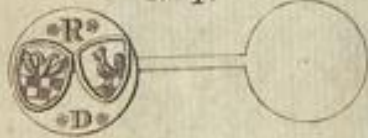
N^o 2.



N^o 3.



N^o 4.



N^o 5.



N^o 6.



N^o 7.



N^o 8.



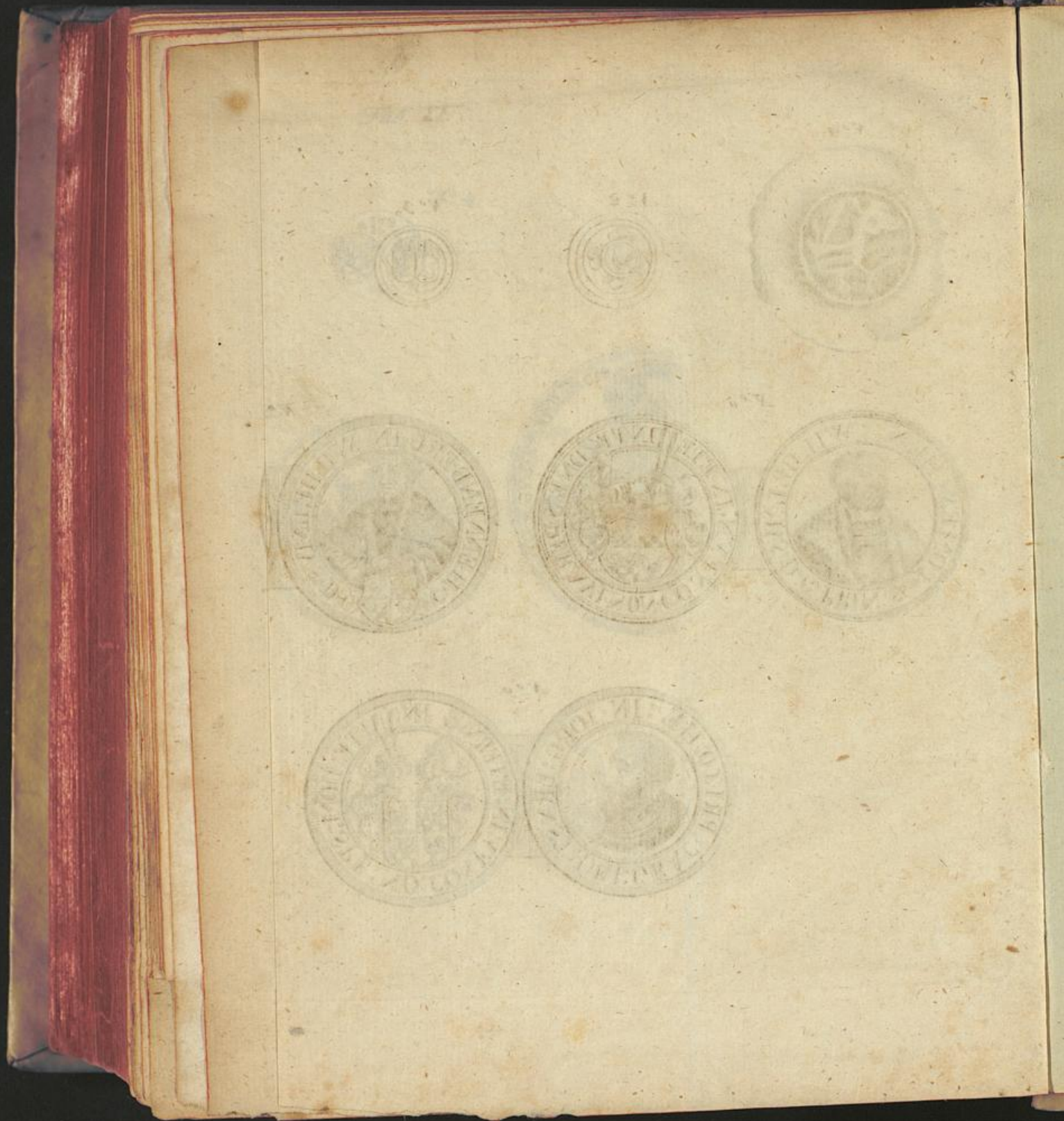
N^o 9.

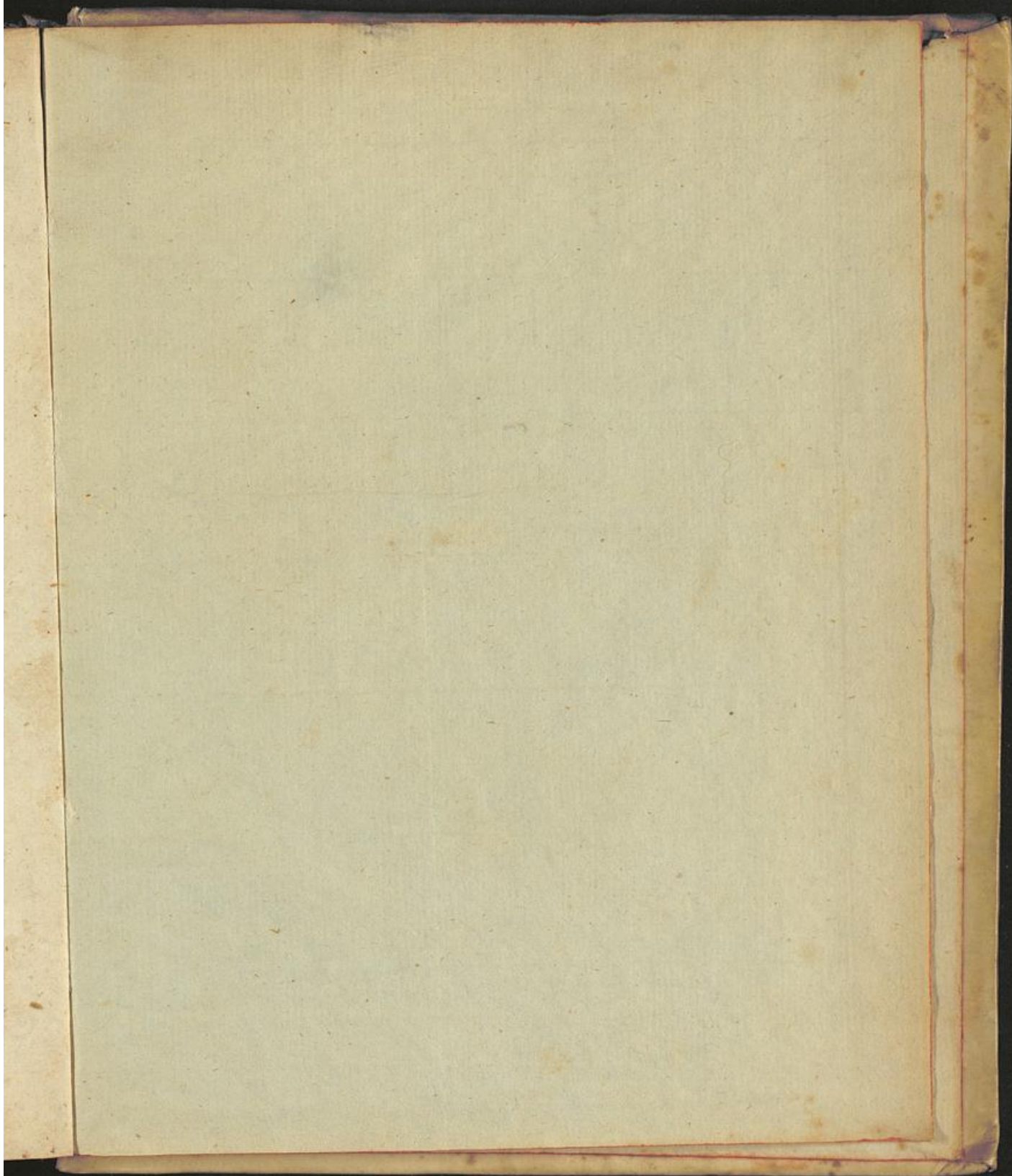


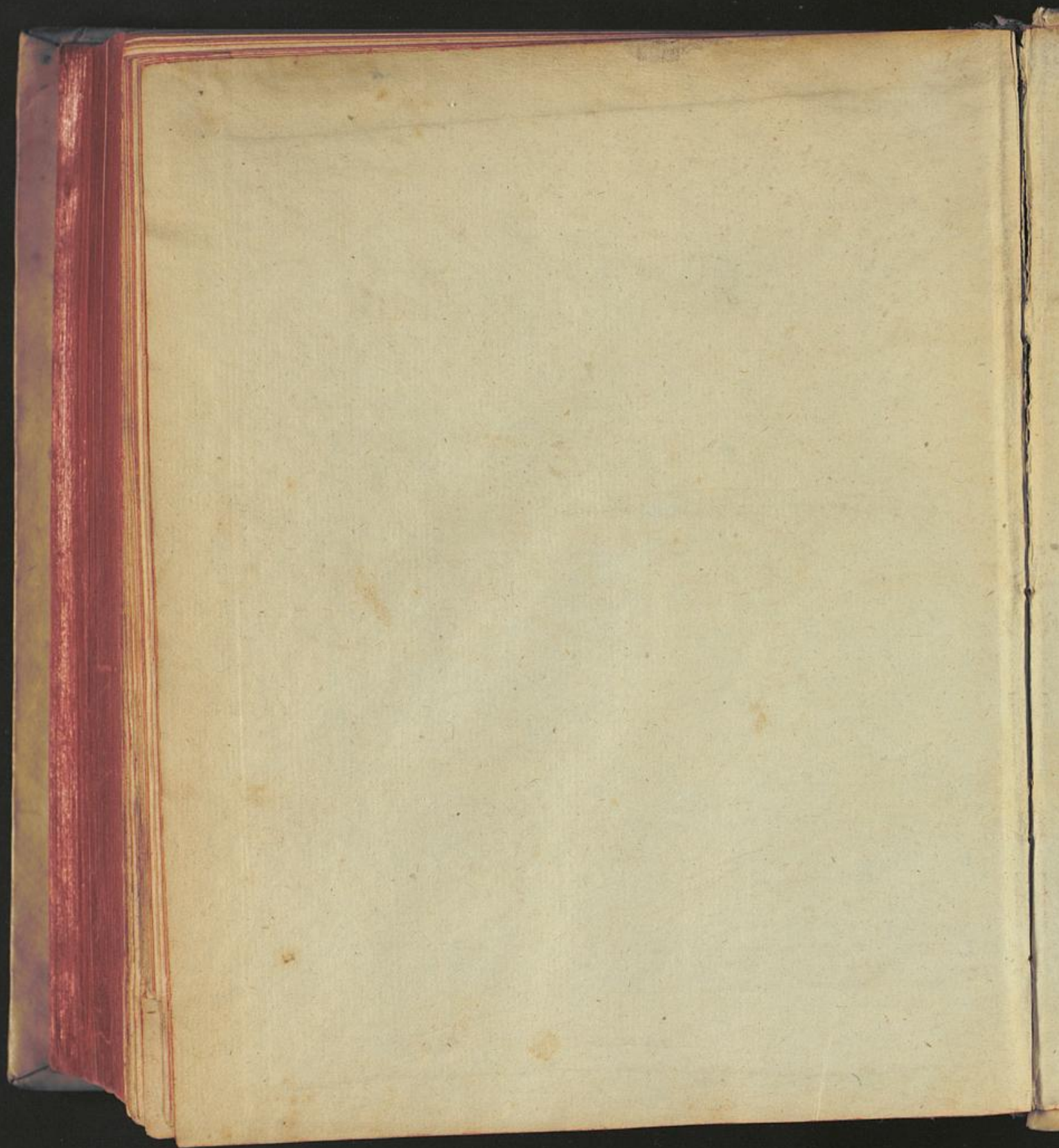
N^o 10.

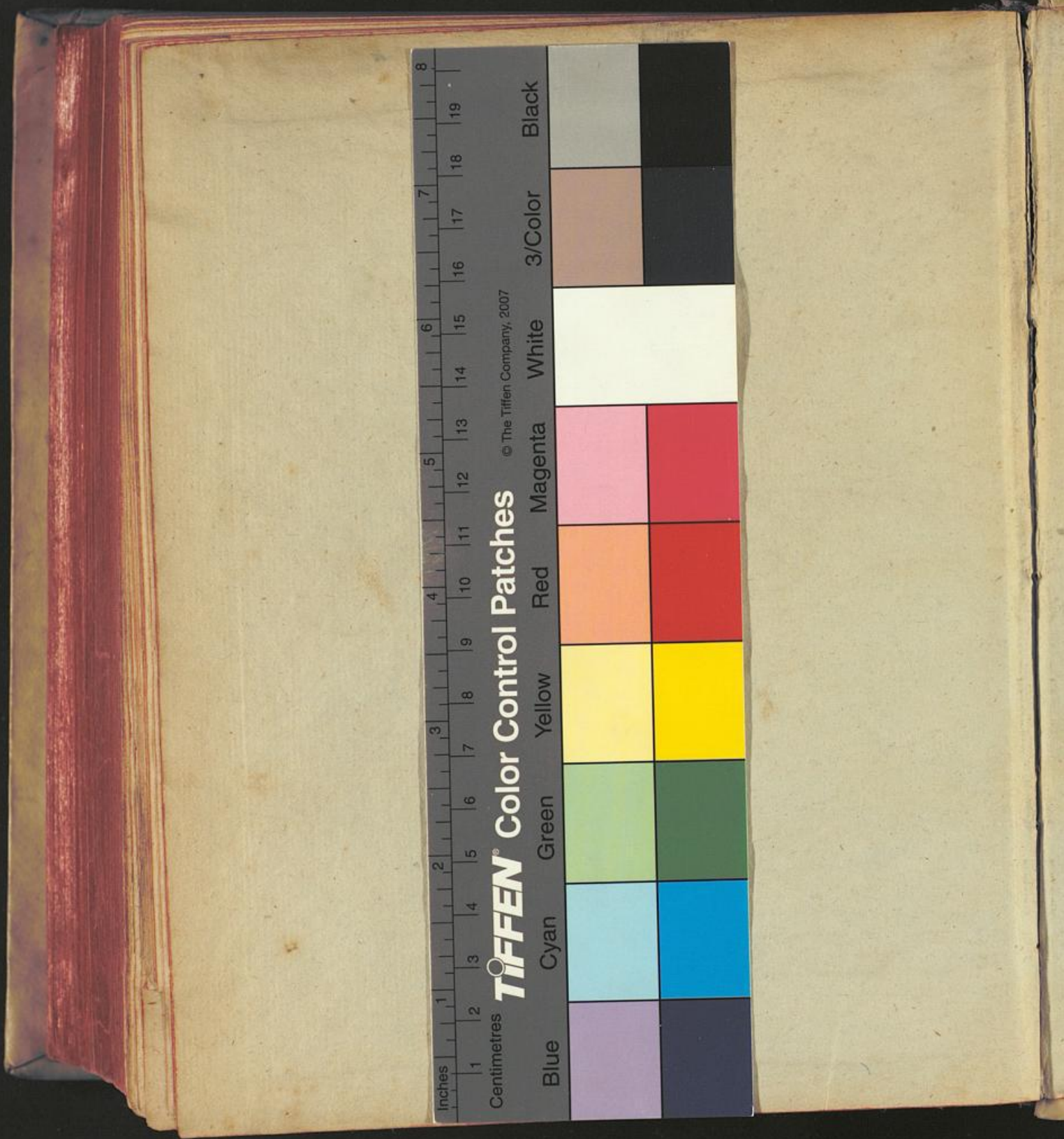












Inches 1 2 3 4 5 6 7 8 9 10 11 12 13 14 15 16 17 18 19 8
Centimetres

TIFFEN Color Control Patches © The Tiffen Company, 2007

Blue	Cyan	Green	Yellow	Red	Magenta	White	3/Color	Black
[Blue patch]	[Cyan patch]	[Green patch]	[Yellow patch]	[Red patch]	[Magenta patch]	[White patch]	[3/Color patch]	[Black patch]
[Dark Blue patch]	[Dark Cyan patch]	[Dark Green patch]	[Dark Yellow patch]	[Dark Red patch]	[Dark Magenta patch]	[Dark White patch]	[Dark 3/Color patch]	[Dark Black patch]

