

d. Logeion.  
 e. Bühnentreppe  
 f. Konistra, vorderer Theil d. Orchestra

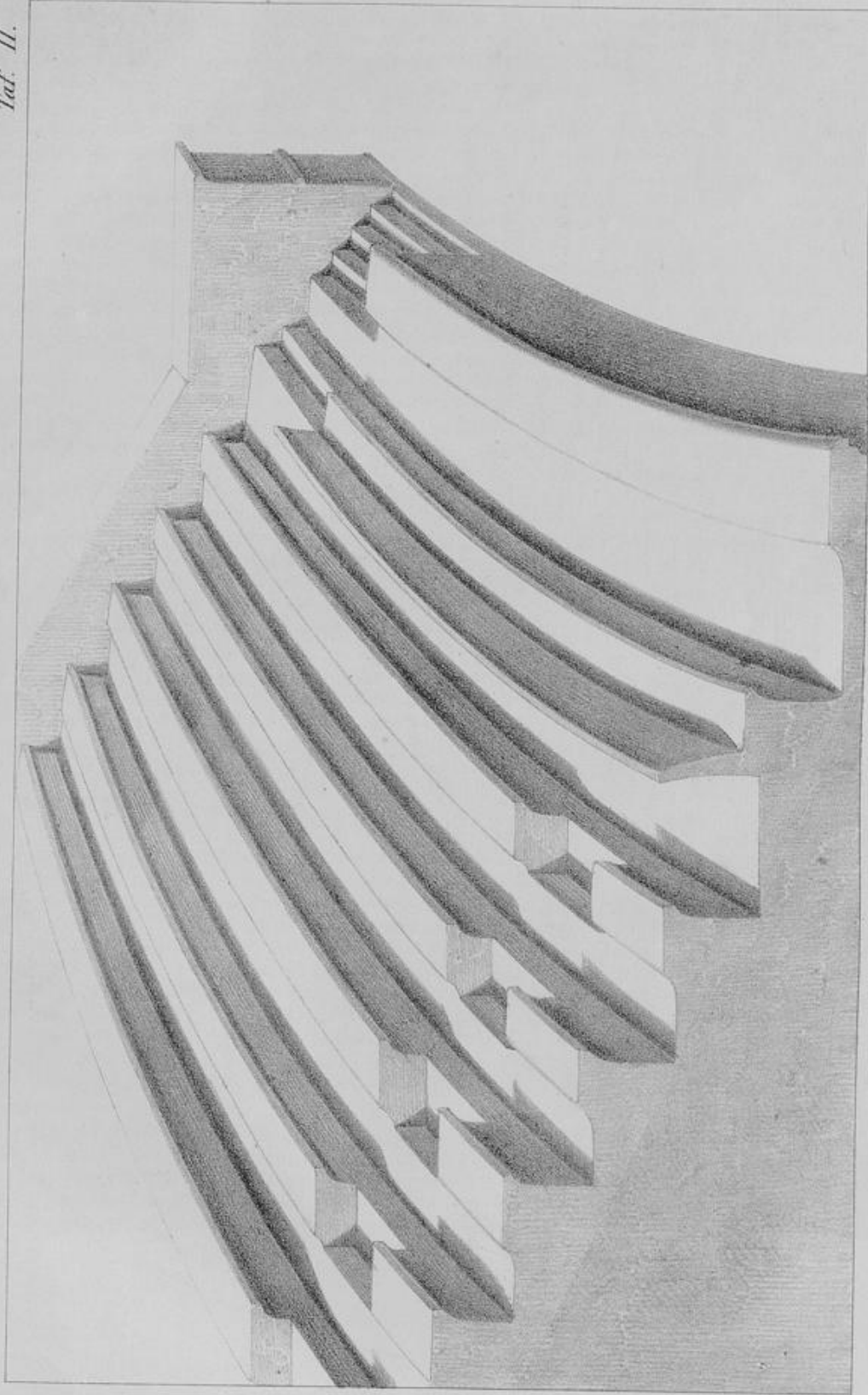
a. Hyposkenion.  
 b. Skeue.  
 c. Periakten.

GRUNDRISS DES GRIECHISCHEN THEATERS.

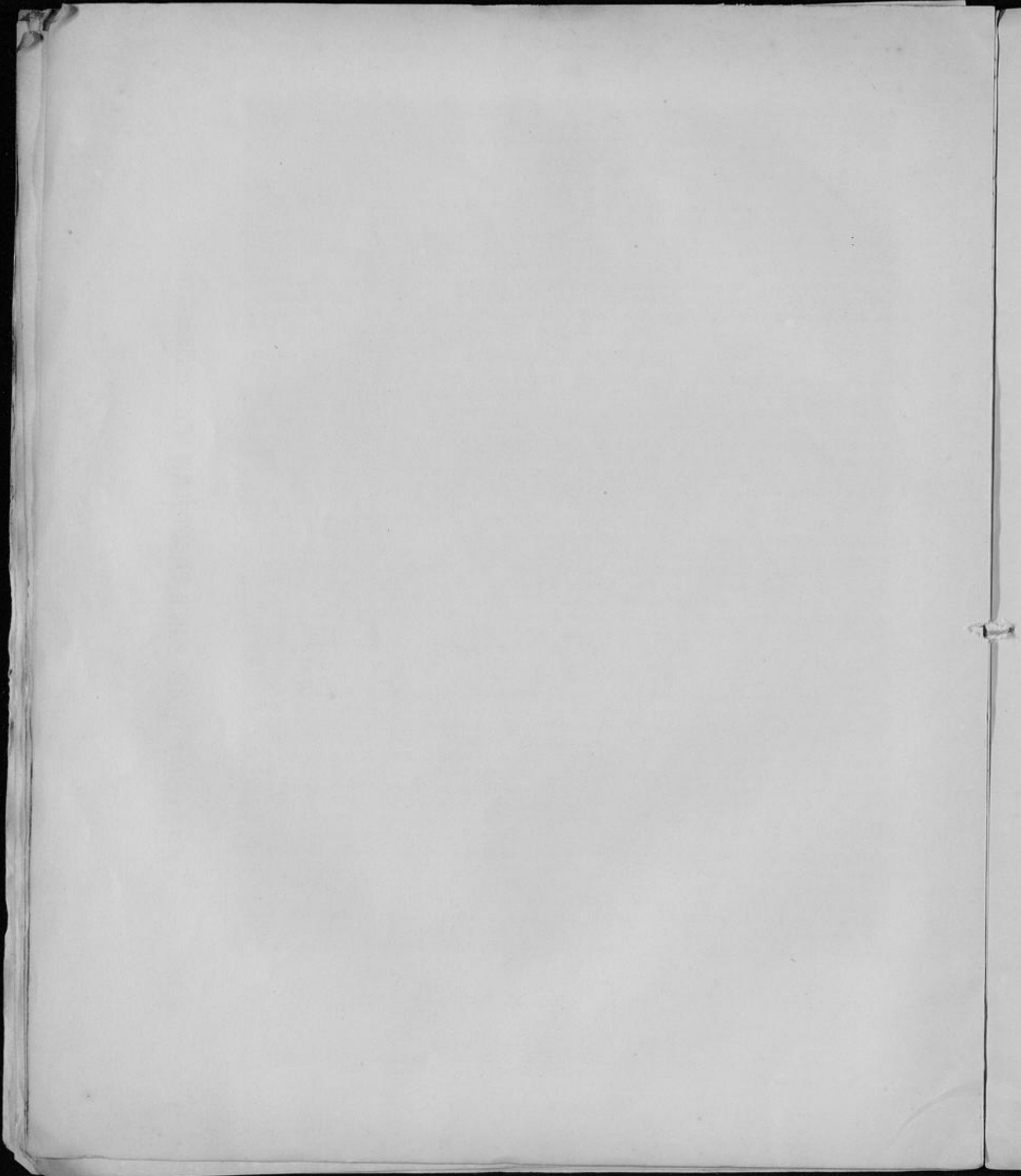
UNIVERSITÄT DÜSSELDORF



Taf. II.

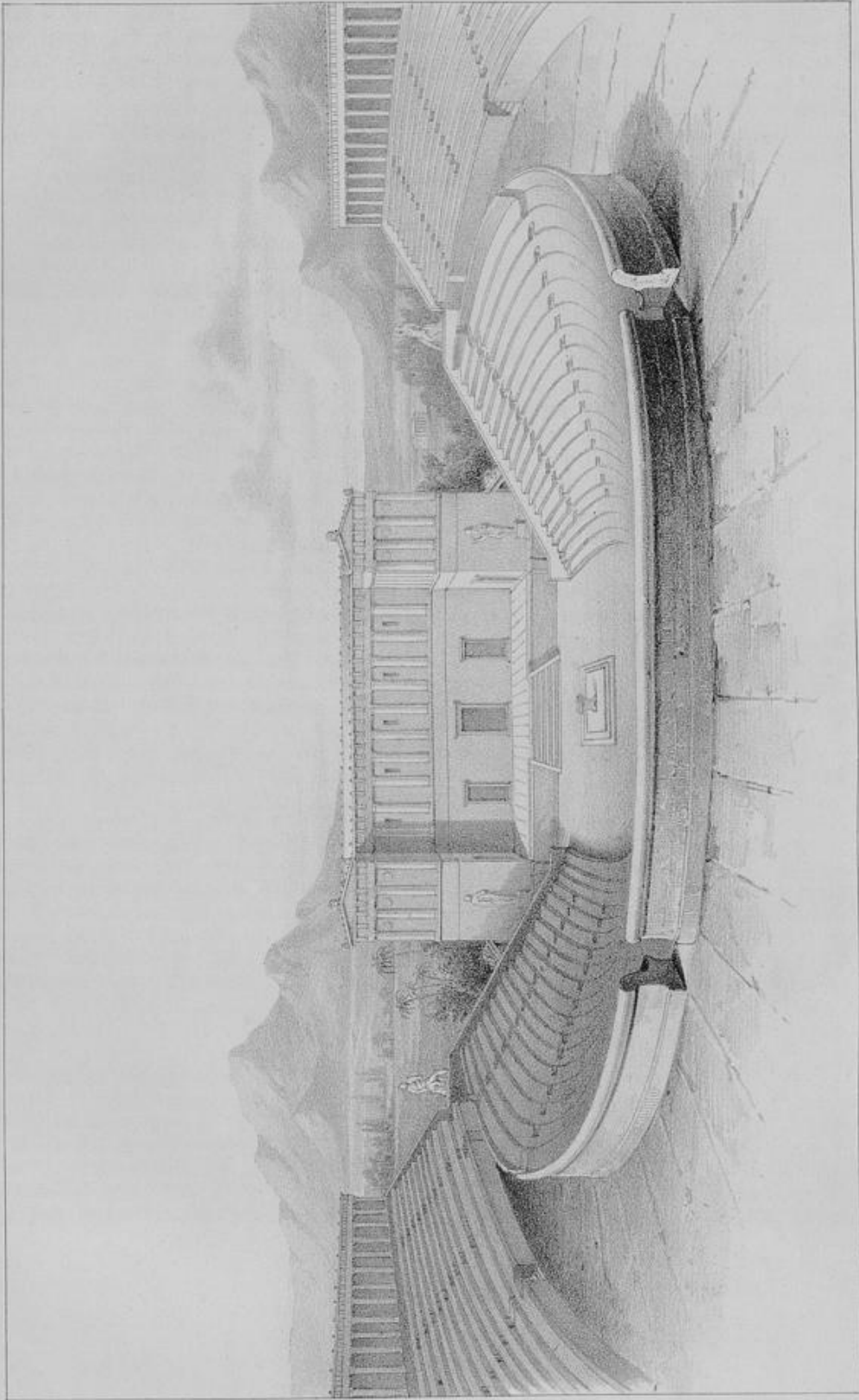


SITZREIHEN VOM LINKEN HORN DES THEATRON.





Taf. III.



ANSICHT DES GRIECHISCHEN THEATERS.

