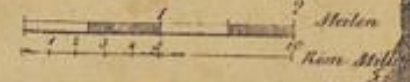


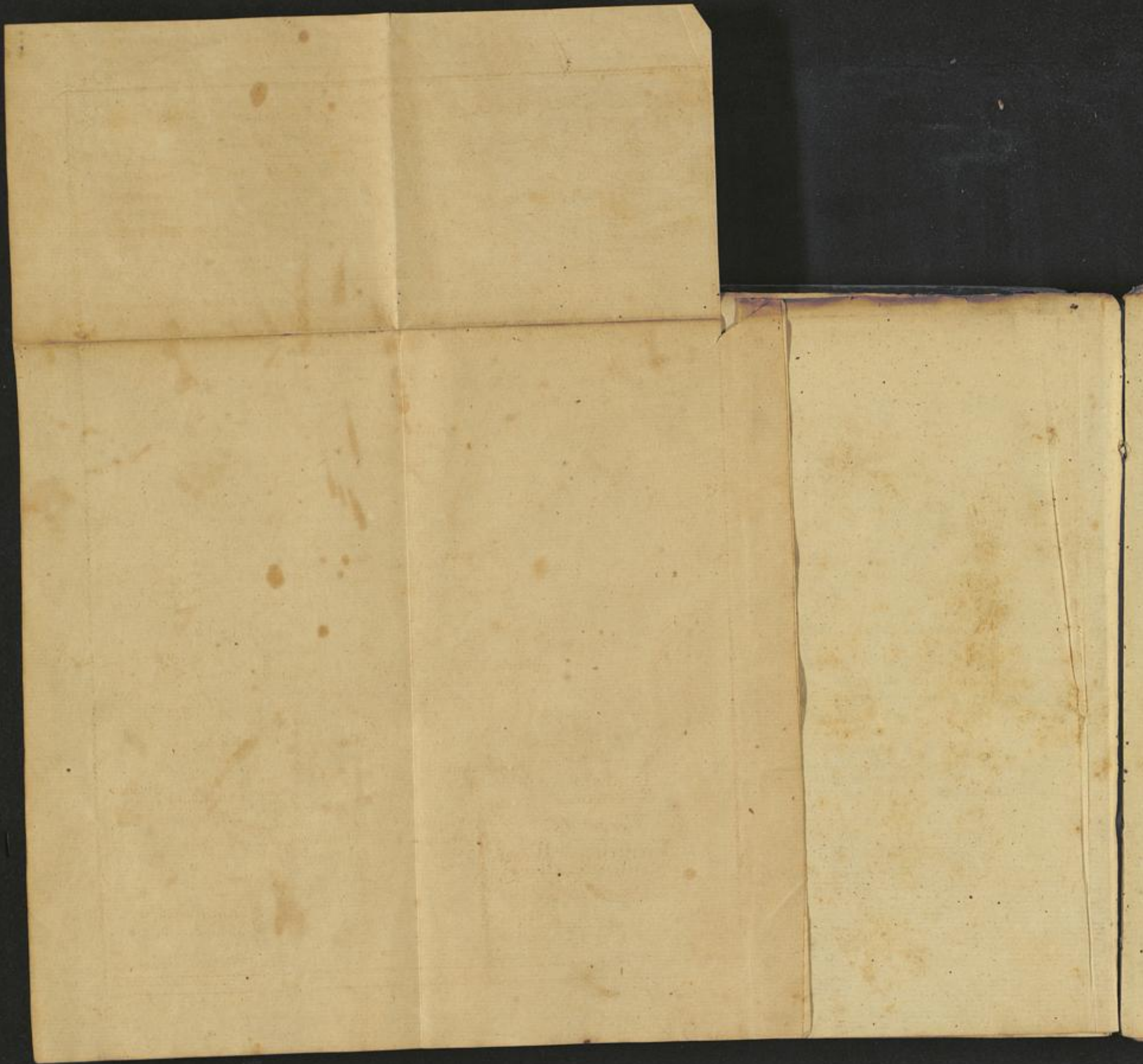


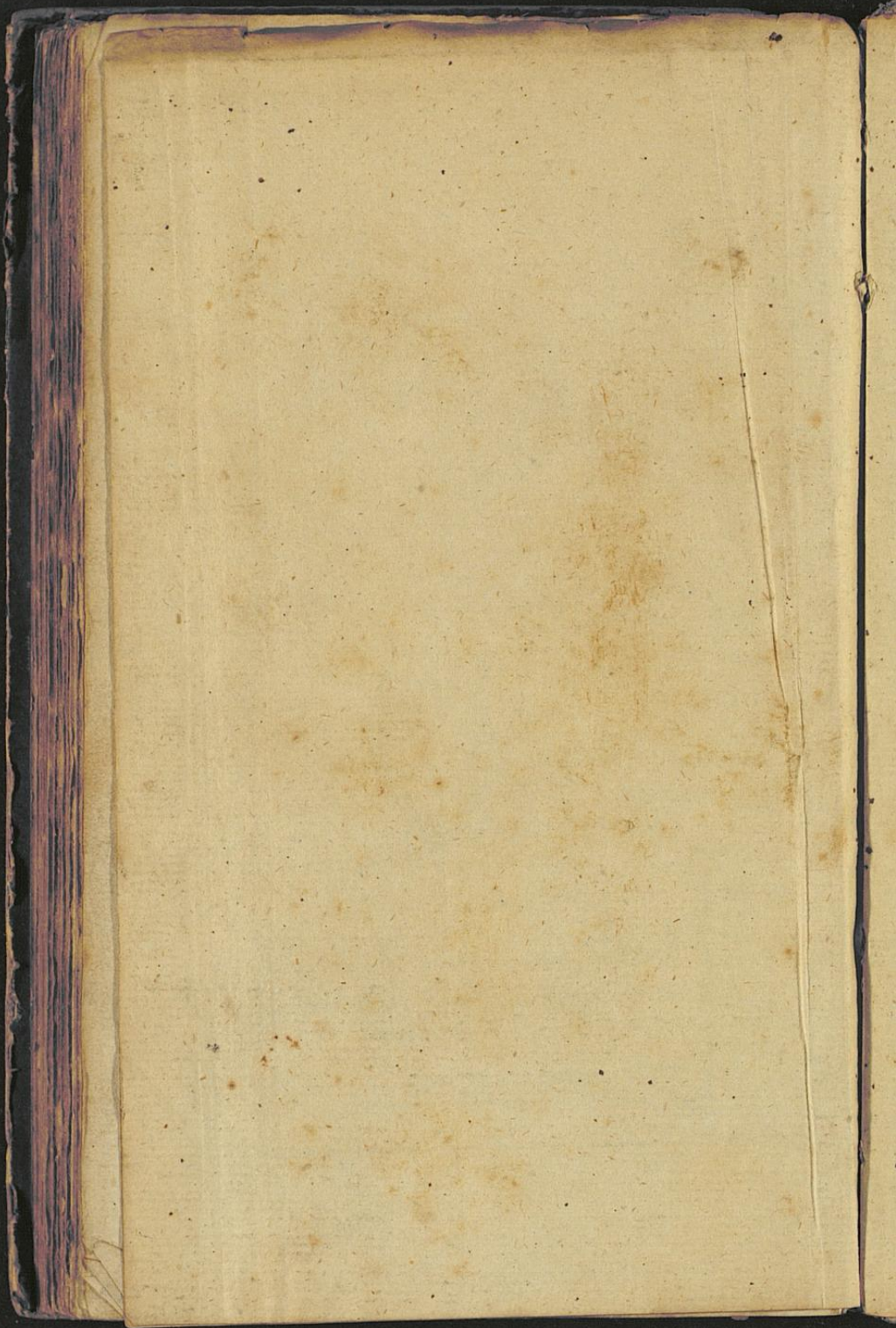
Die römische Rheinstraße von Confluentes nach Noviomagus.
nach der Peutingerischen Tafel.

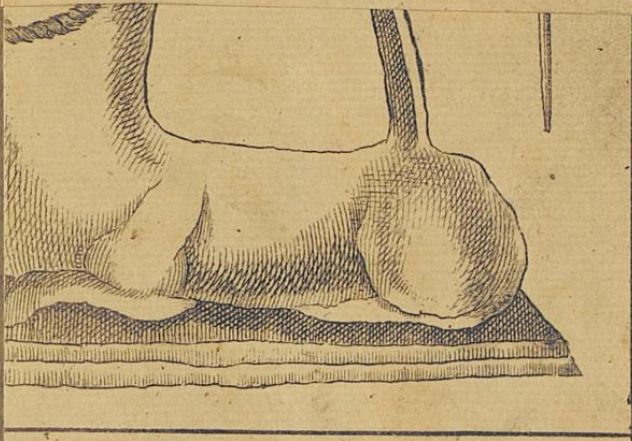


Die Gegend
von Xanten und Wesel
mit der Römer-Strasse und
der Lippe

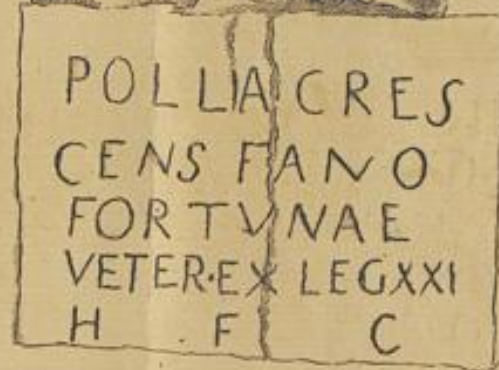
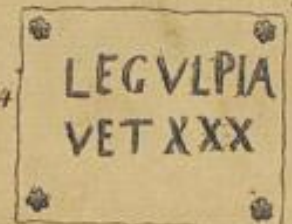
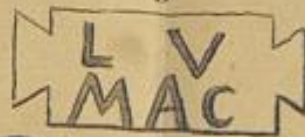






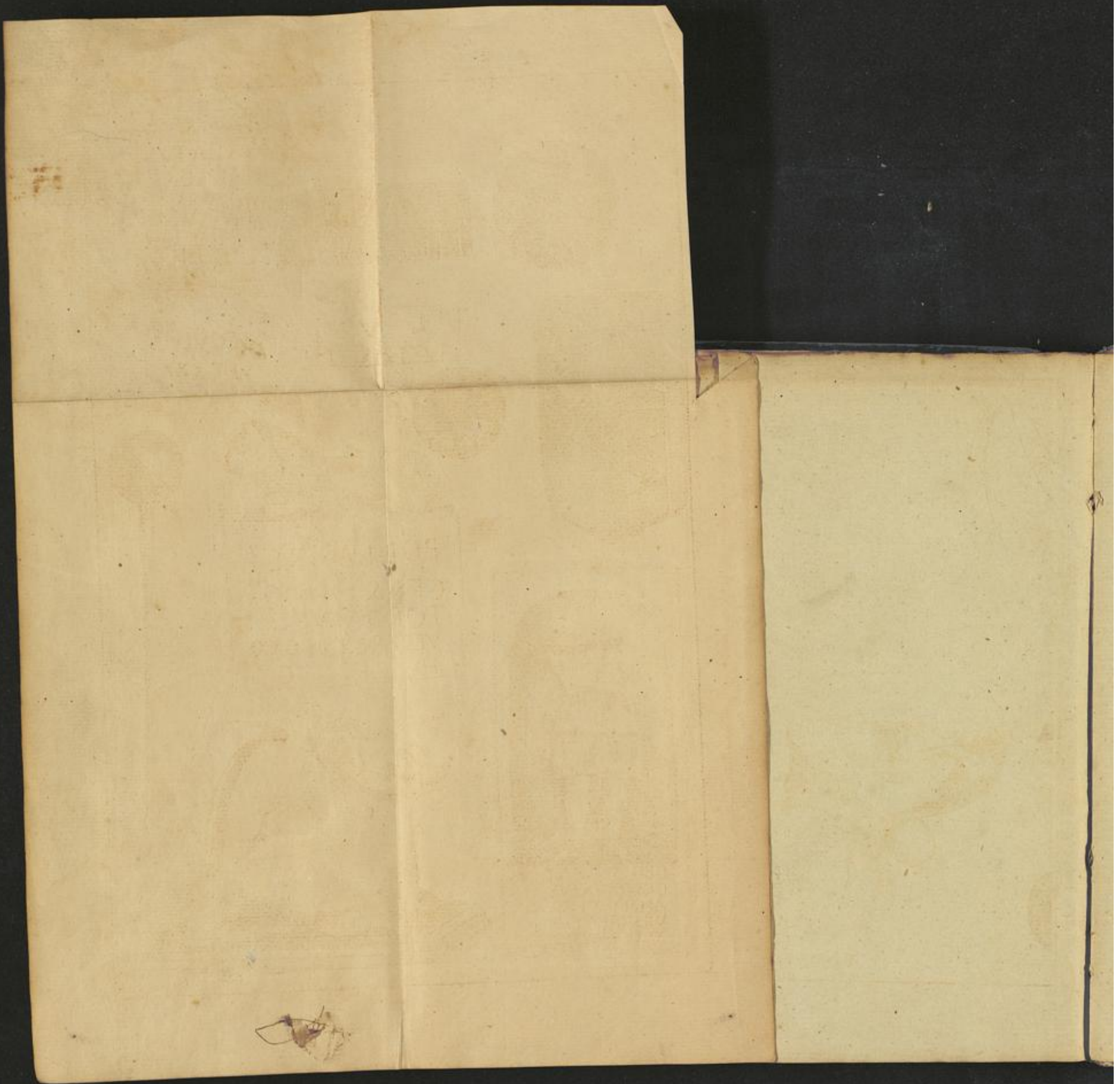


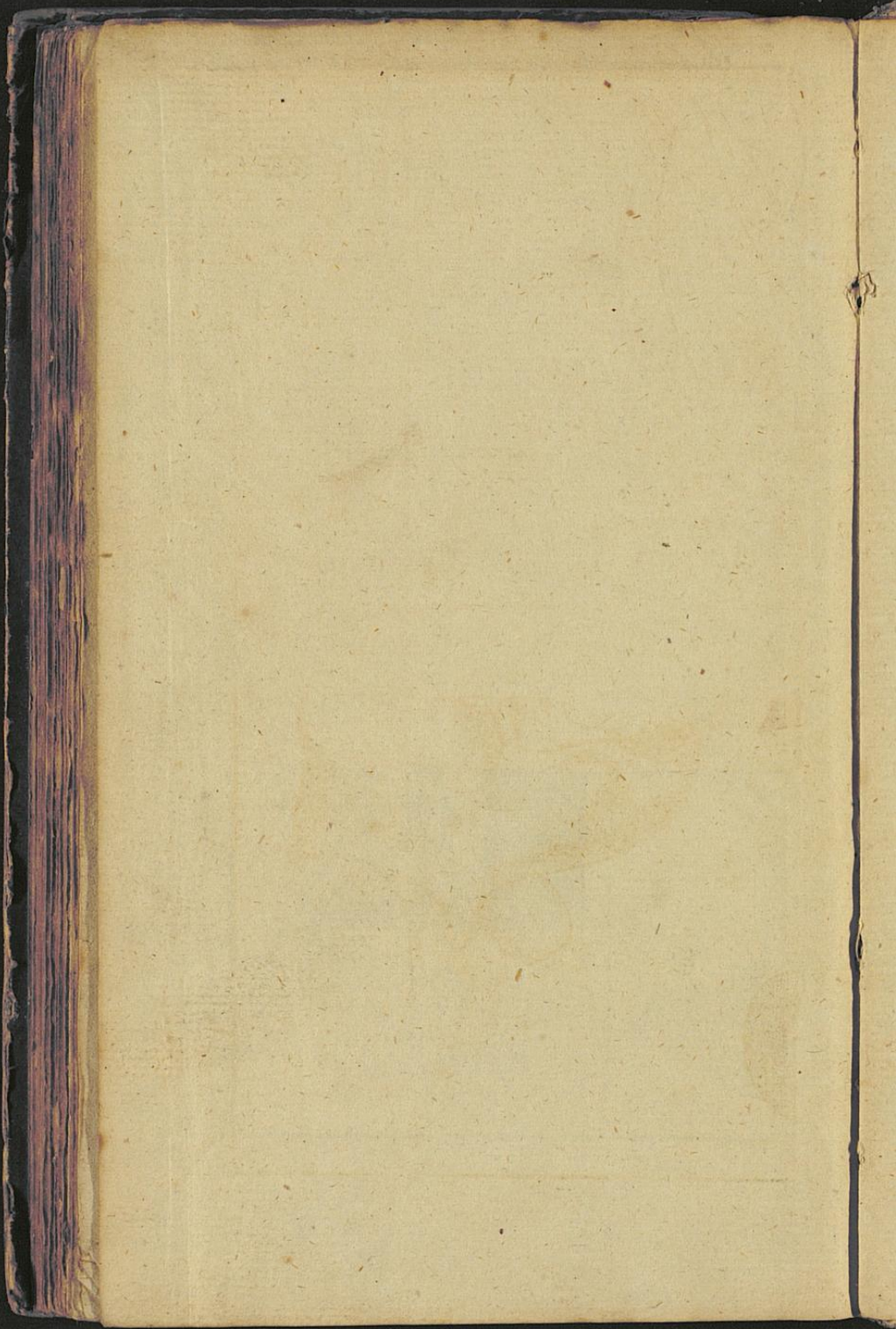
101

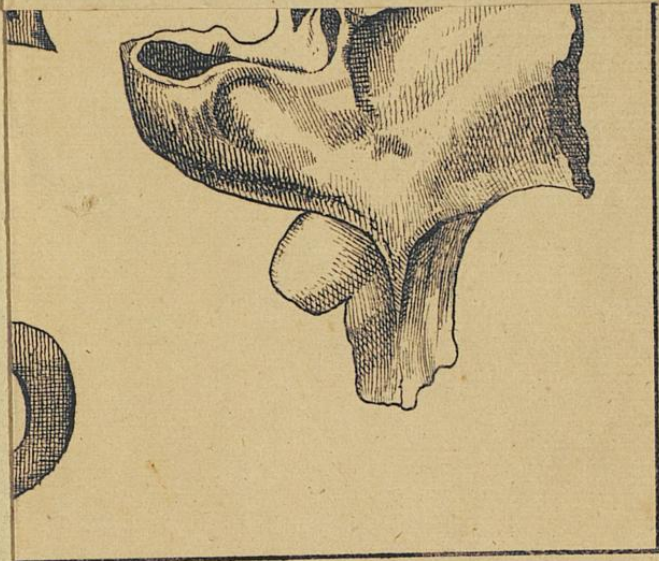


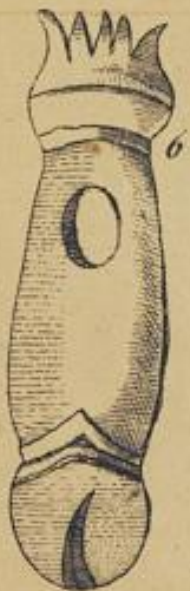
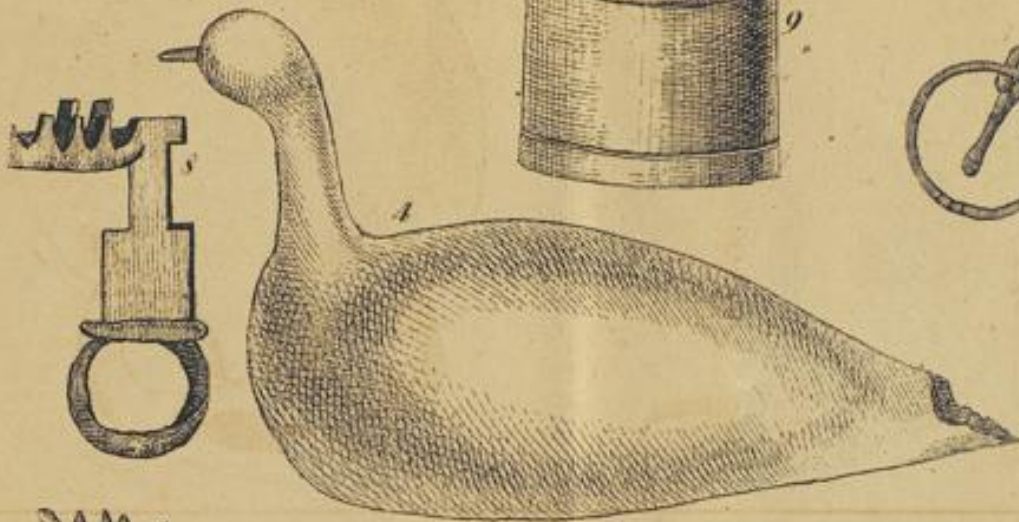
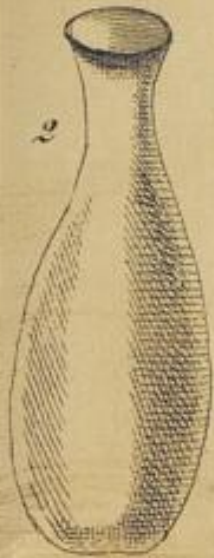
DEO SILVANO
CESSORINIVS
AMMAVSIVS
VRSARIVS LEG
XXXVSAVSLM



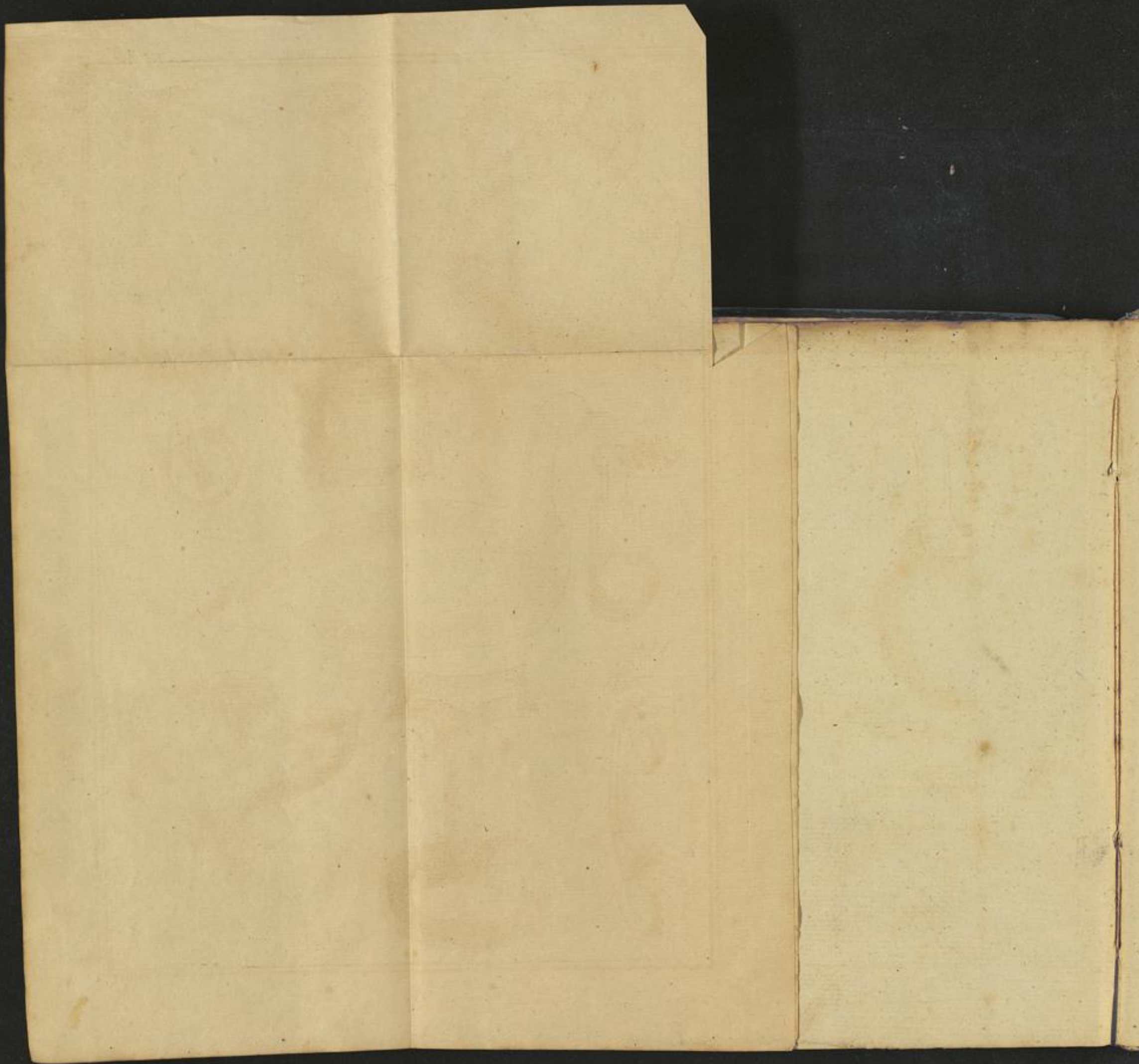


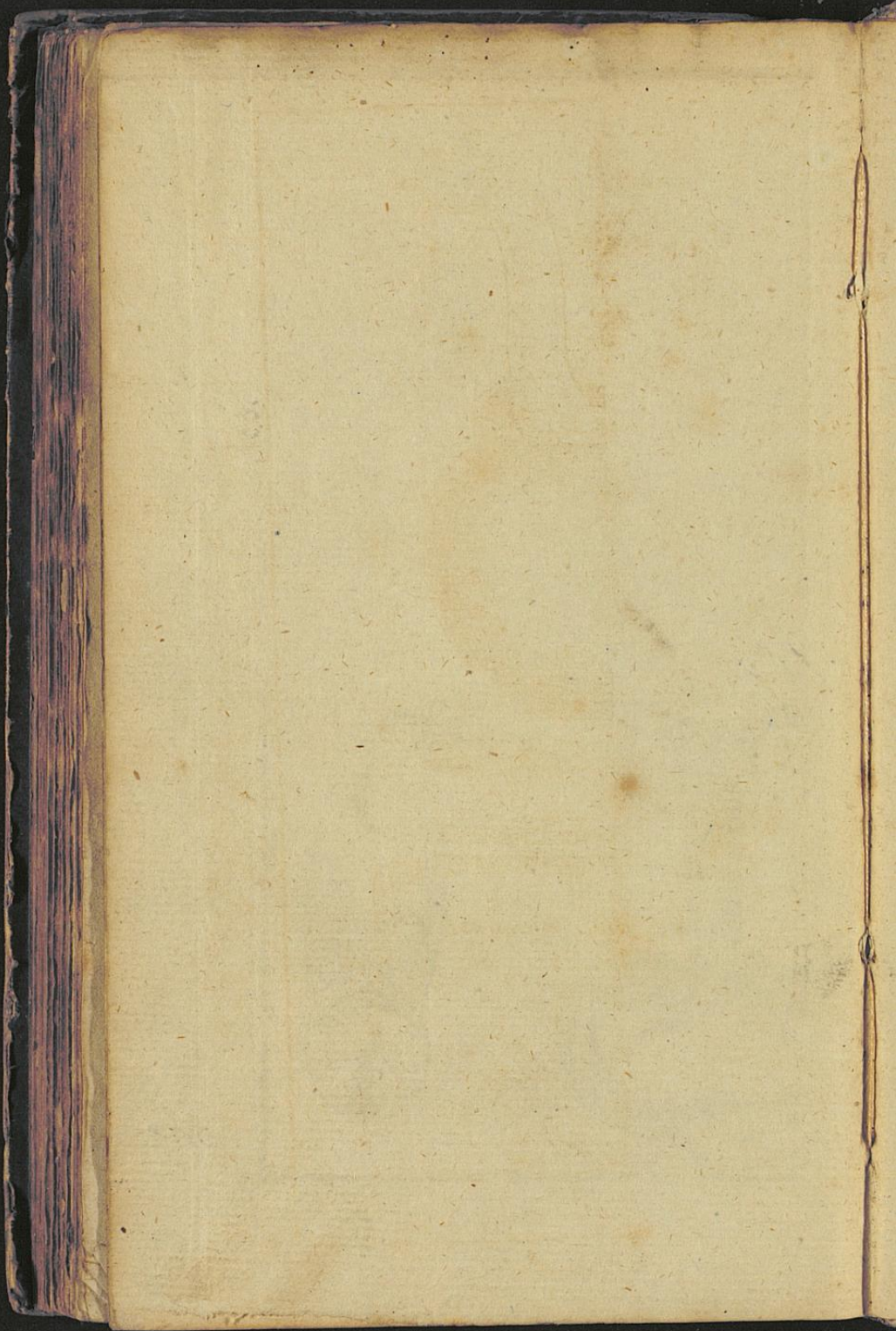




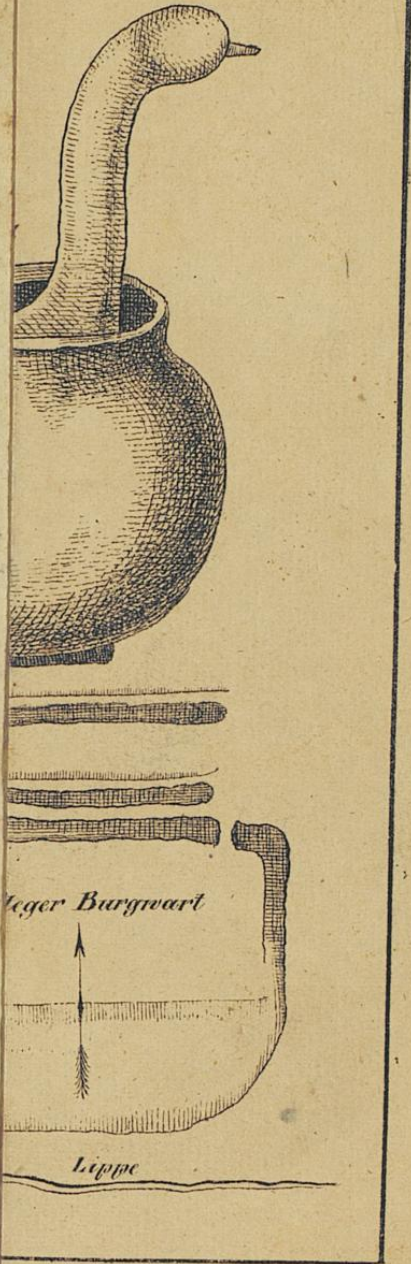


8





Taf. IV.



Leger Burgwart

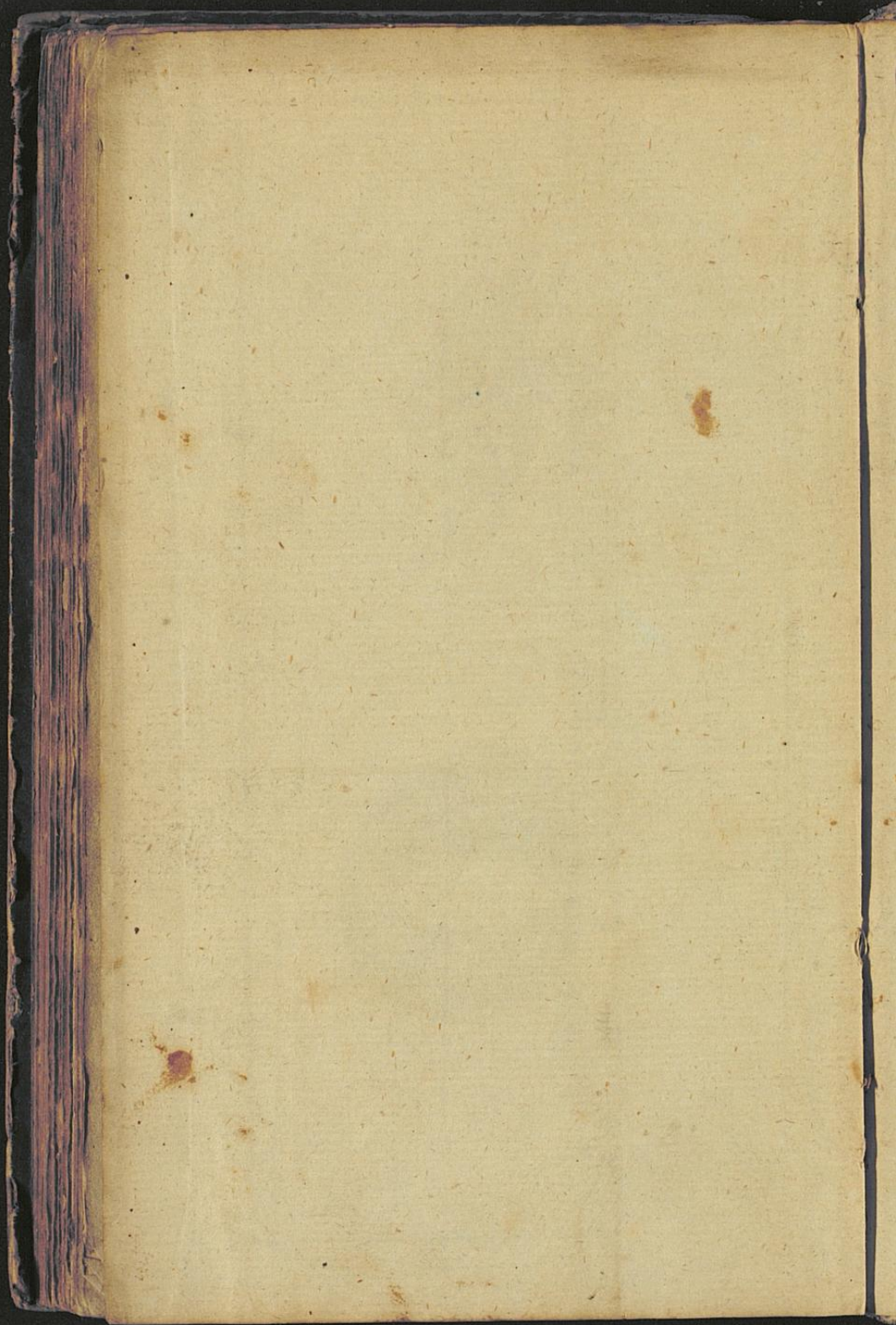
Leppe



ms











24



