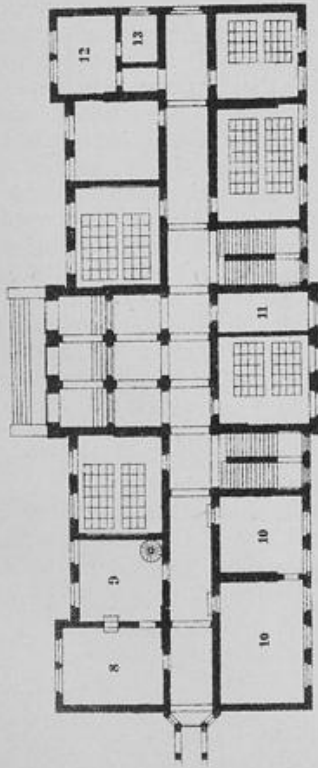
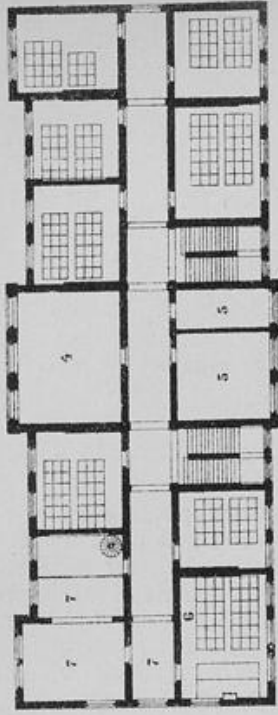


# Gymnasium zu Parchim.

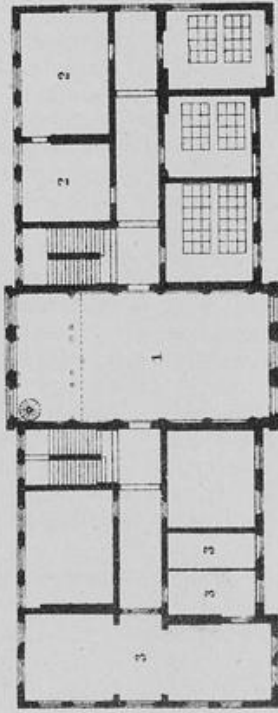
Erdegchofs.



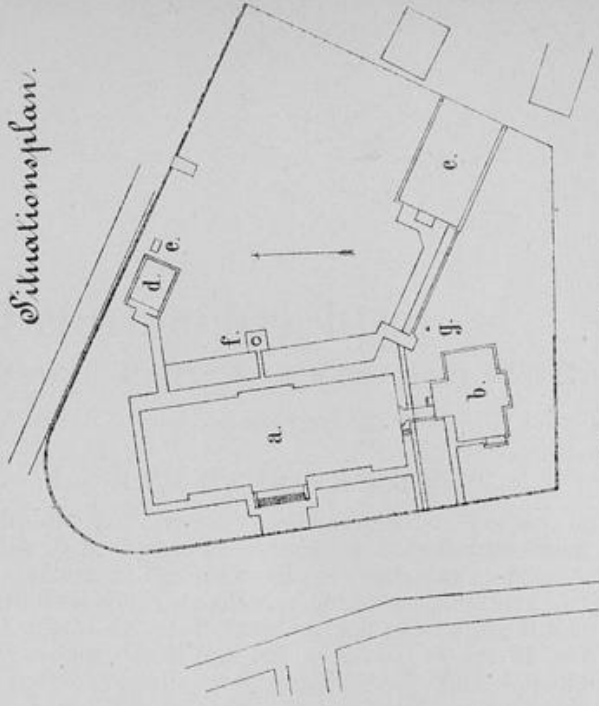
Erstes Obergeschofs.



Zweites Obergeschofs.



Situationsplan.



- |                          |                             |
|--------------------------|-----------------------------|
| 1. Aula.                 | 8. Chemisches Auditorium.   |
| 2. Bibliothek.           | 9. Chemisches Laboratorium. |
| 3. Zeichensaal.          | 10. Konferenzzimmer.        |
| 4. Singesaal.            | 11. Lehrgarderobe.          |
| 5. Sammlungen.           | 12. Direktorzimmer.         |
| 6. Physikal. Auditorium. | 13. Archiv.                 |
| 7. Physikal. Cabinet.    |                             |

- |                       |
|-----------------------|
| a. Gymnasium.         |
| b. Direktorwohnung.   |
| c. Turnhalle.         |
| d. Abortgebäude.      |
| e. Müllgrube.         |
| f. Brunnen mit Pumpe. |
| g. Pumpe.             |

Handwritten notes in the top left corner, including the number '1' and some illegible text.




Handwritten notes in the middle left section, including the number '2' and some illegible text.