

erit solutū et in celis dixit dñs symoni pe-
 tro. *Ad vs b. Tu es pe- trus. Et* **S**ymon bariona
 tu uocaberis cephias qđ iterpretat petrus ia-
 uitor celi pulsātibz a pe ri sup modū petraui
 in om nes dimitte septuagies septies. *Ad m. a.* **R**gt.

Joseph of. de coi ofess.

Orietur sicut *In annua. oc. dñ ad vs*
si p. a. Ave m. p. iad. **E**uouē
 sol saluator mūdi et descēdet in uterū uginis
 sicut p mber sup gramē. *Ad m. a. Ave m. a. Ave m. a.* **R**gt. **E**uouae. *mat. i. i. i.*

Ad pl
sc p a.
Ere
ugo

Aue mari a gracia ple na. **D**o min?
 te cū p uen te. *In* **H**ae ugo cōcipiet et

pariet filiū et uocabit nōmē eius emanuel.

Quē dō? **Quoūe.** **B**eata es maria que credi-

disti pficient in te q̄ dicta st̄ tibi a dño. **p̄** Celi enī.

Quoūe. **A**ngelus domini nūciauit marie

et cōcepit de spiritu scō. **p̄** **D**ñi ē t̄. **Quoūe.**

Ex spou
spēs decōis
ei? **D**s n̄
maifestet.
Re.



Missus ē gabriel an ge lus

ad mariā ūgi nē despō

latā ioseph nūciās ei uerbū et expauel

at ūgo de lu mine ueti meas mari a

ūuenisti graciā apud dō mī nū ecce cōa pie



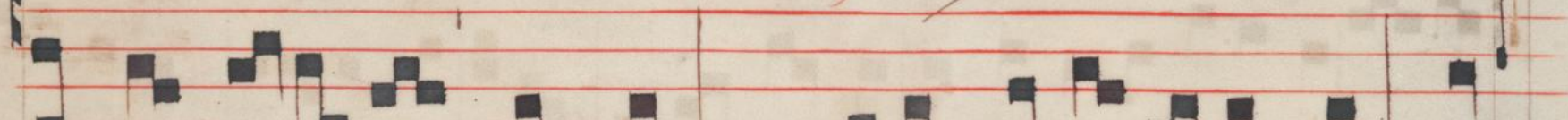
erit solutū et in celis dixit dñs symoni pe

*Ad vs b.
Tu es pe
trus. Et
Ad m. a.*

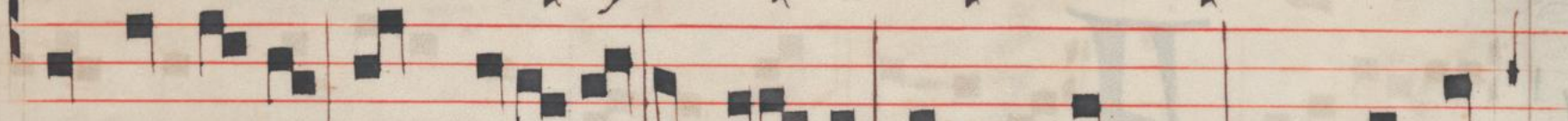
Symon bariona



tro. *hnd.* Guouæ.



tu uocaberis cephas qđ iterpretat petrus ia



uitor celi pulsātibz aperi sup modū petraui



in om nes dimitte septuagies septies. *rgt.*

Joseph of. de coi ofess.



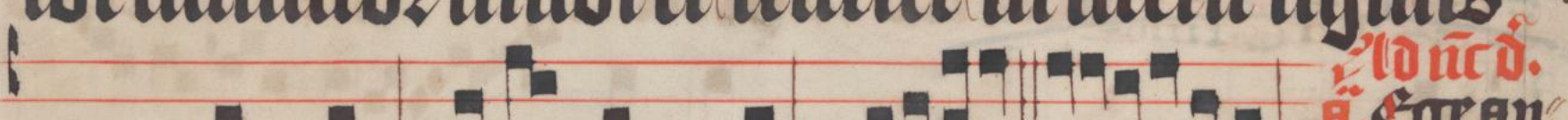
Orietur sicut *h. Quo. v. korat. Ad m. a. Guouæ.*

*In annua. oc. dñs ad vs
sr p. a. Plue m. p. tad.
h. Quo. v. korat. Ad m. a. Guouæ.*



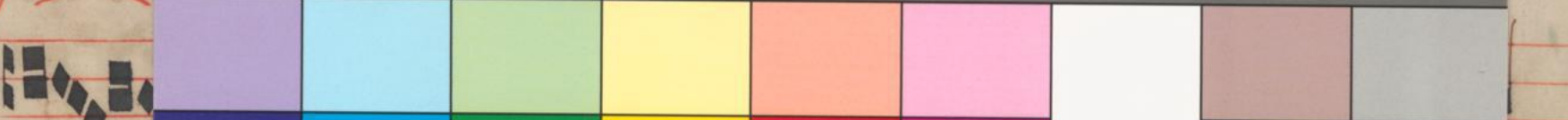
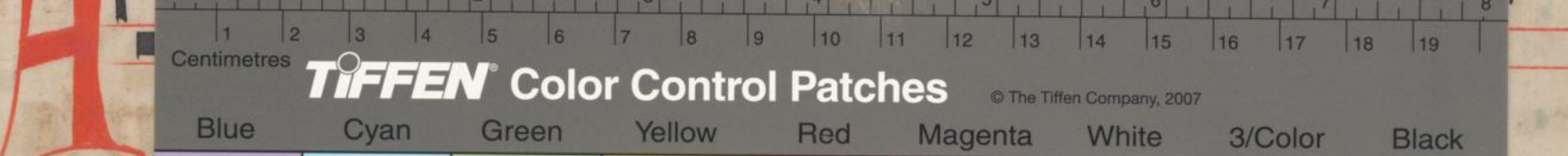
sol saluator mūdi et descēdet in uterū uginis

*Ad opl
sr p. a.
Ecce
ugo*



sicut pumber sup gramē. *rgt. Guouæ. mat. iut.*

*Ad uc d.
a. Ecce an
alla. Ad
mat. iut.*



Ms. D37, Nr. 2