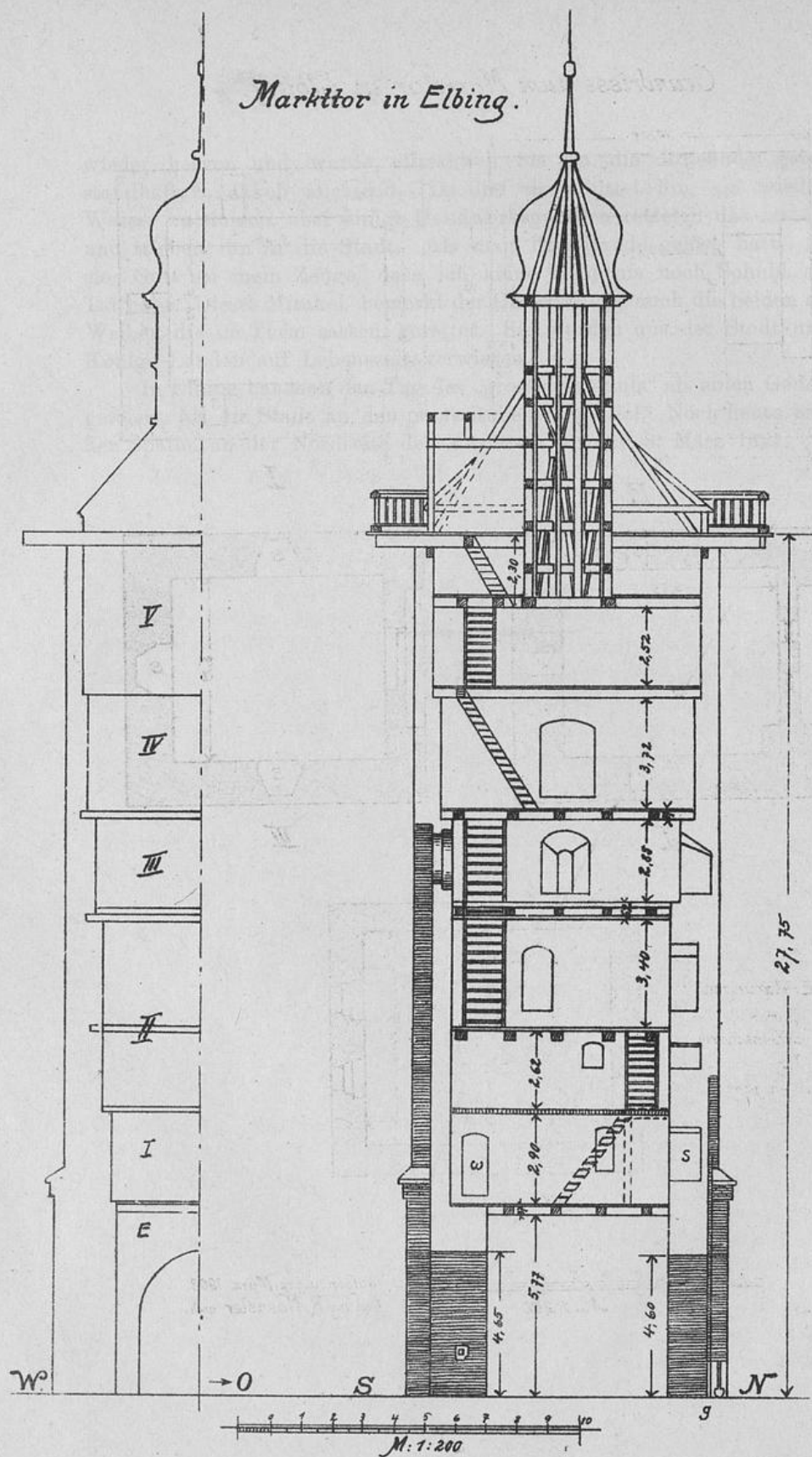
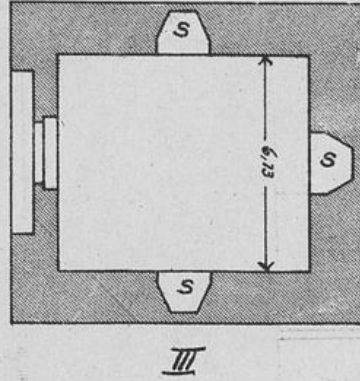
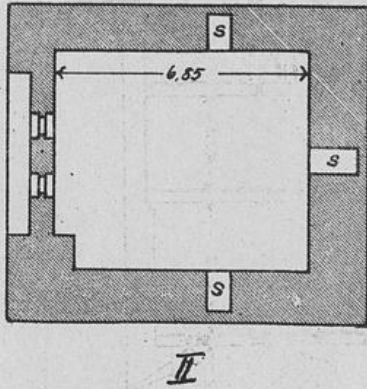
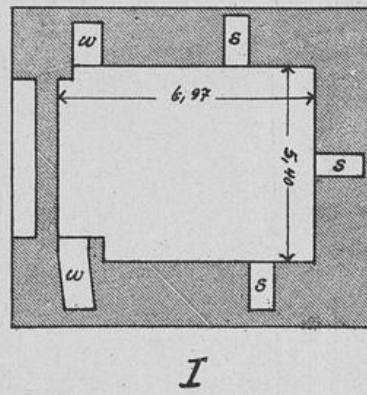
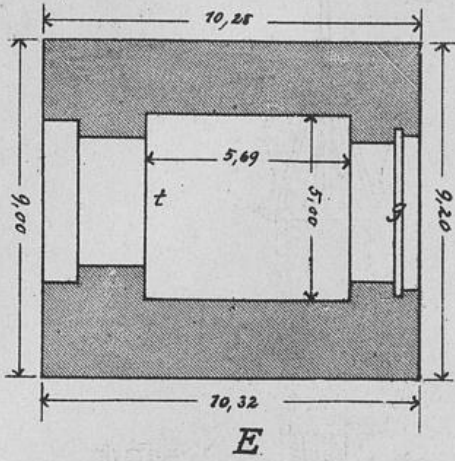


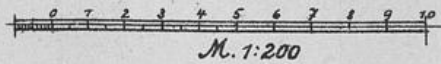
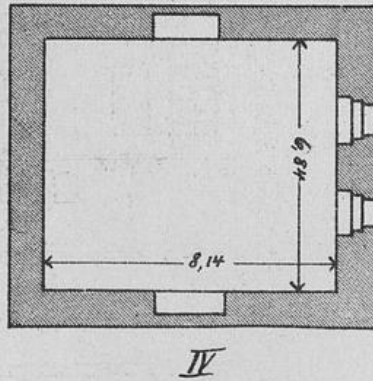
Markttor in Elbing.



Grundrisse zum Markttor in Elbing.



Erklärungen:
 g Gatter.
 s Schießscharte.
 t Tor.
 w Wehrgang.



aufgen. u. gez. März 1908
 Dipl.-Ing. R. Haensler arch.

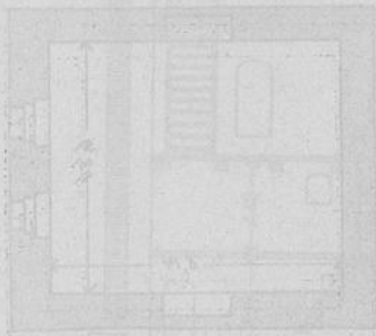
Grundriss zum Nachbar in Berlin



I



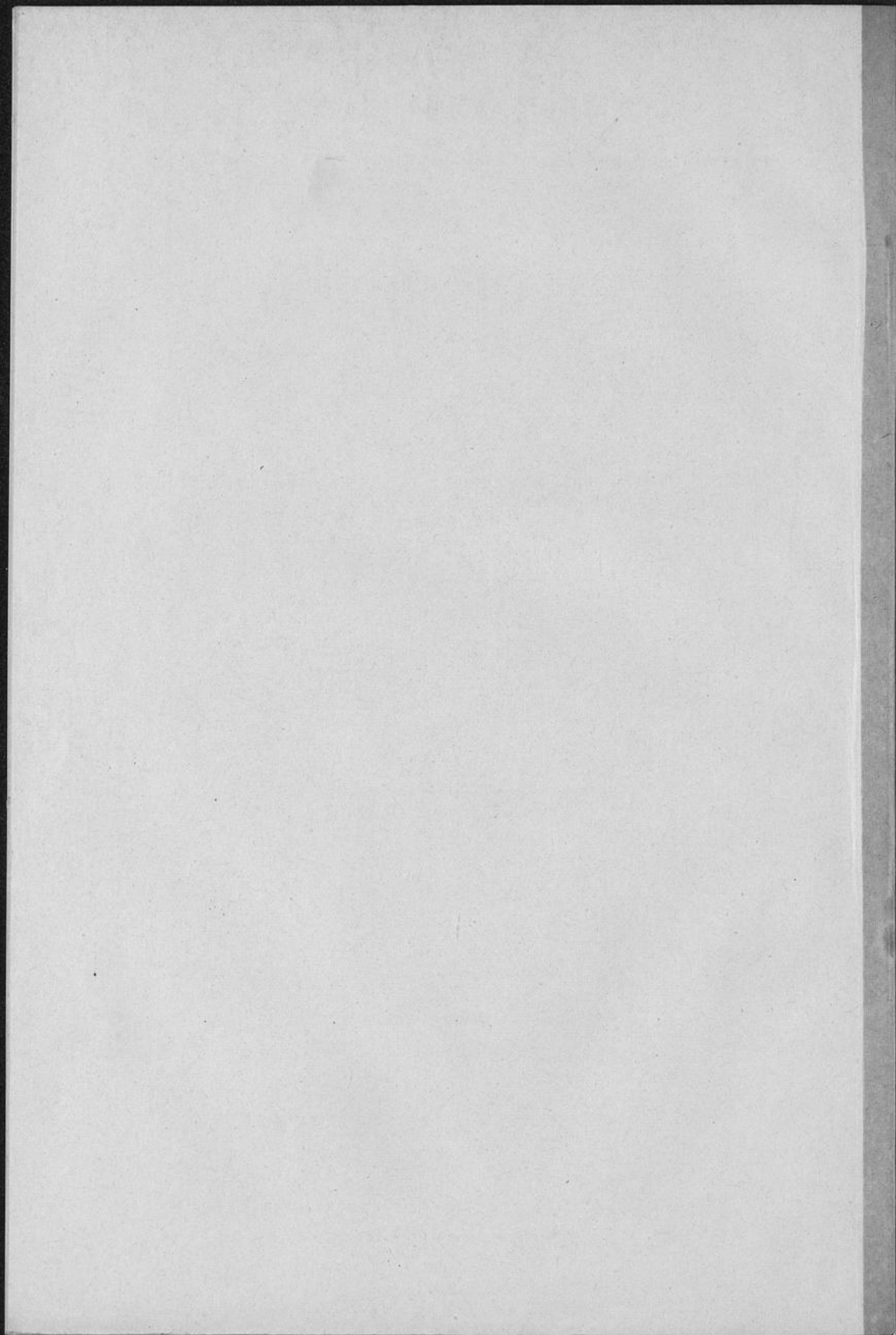
II



Erleuchtungen
 2 2
 2 2
 2 2
 2 2
 2 2

Grundriss zum Nachbar in Berlin

III



© The Tiffen Company, 2007

TIFFEN® Gray Scale



A 1 2 3 4 5 6 M 8 9 10 11 12 13 14 15 B 17 18 19

