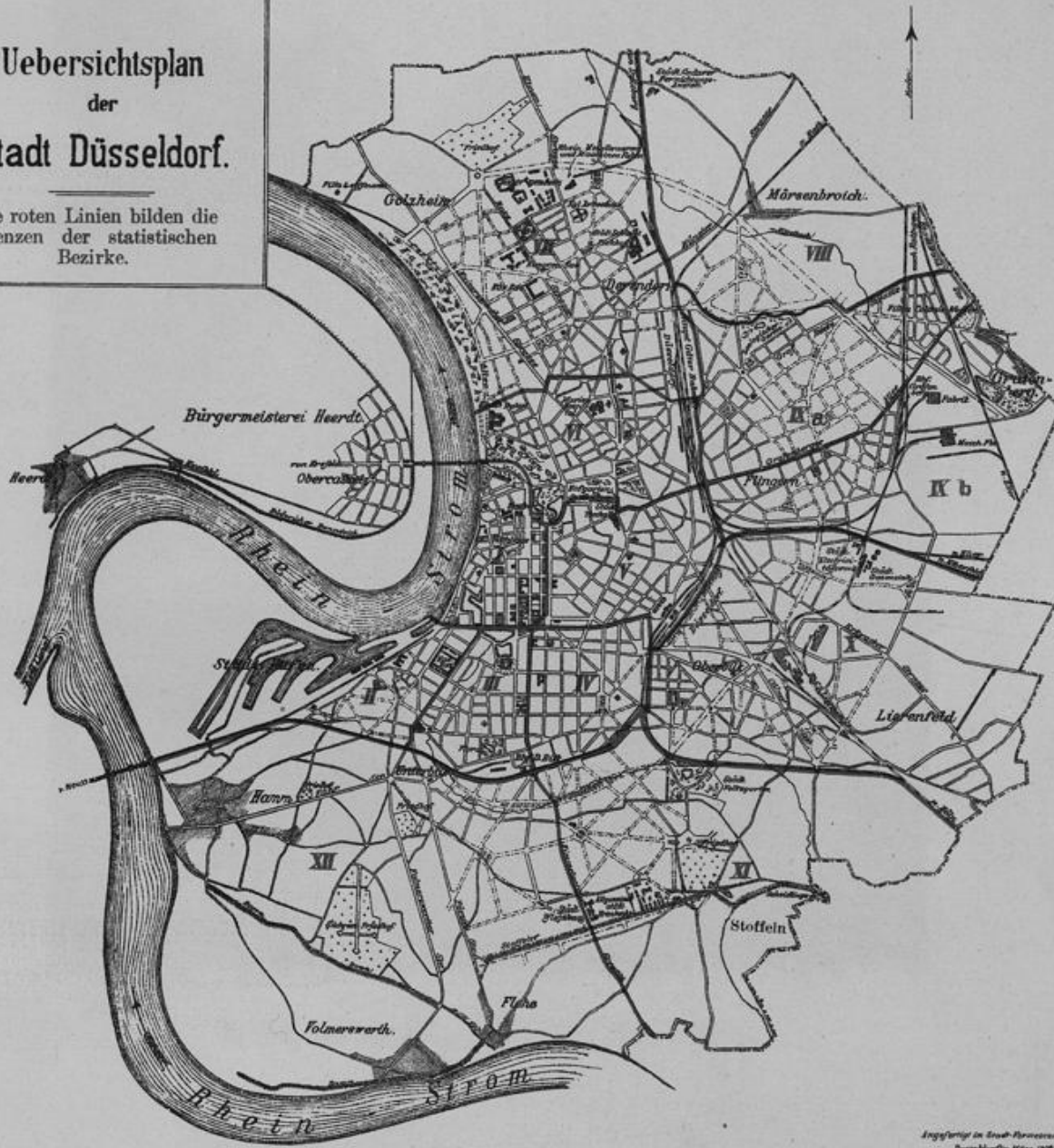
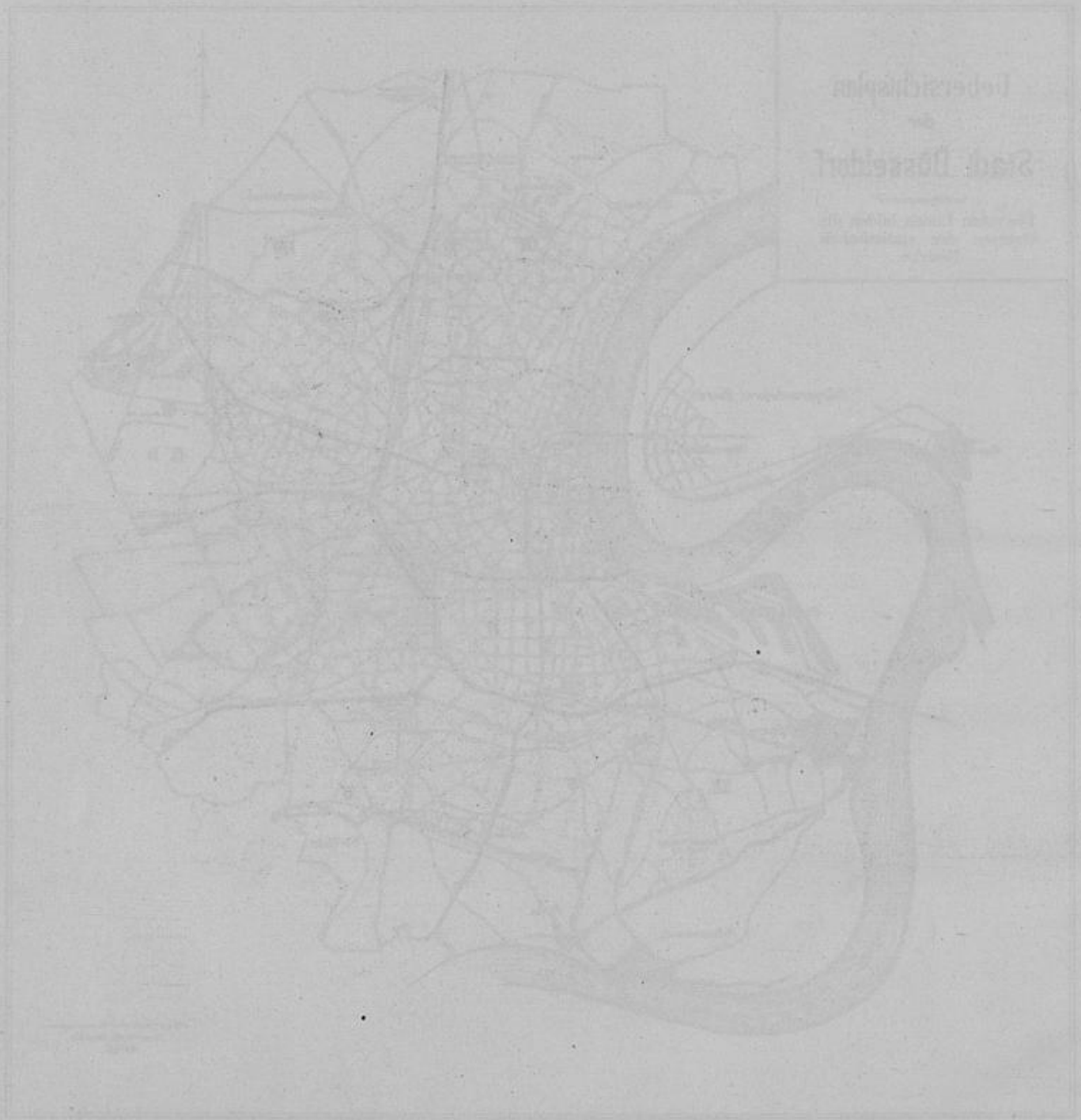


# Uebersichtsplan der Stadt Düsseldorf.

Die roten Linien bilden die  
Grenzen der statistischen  
Bezirke.

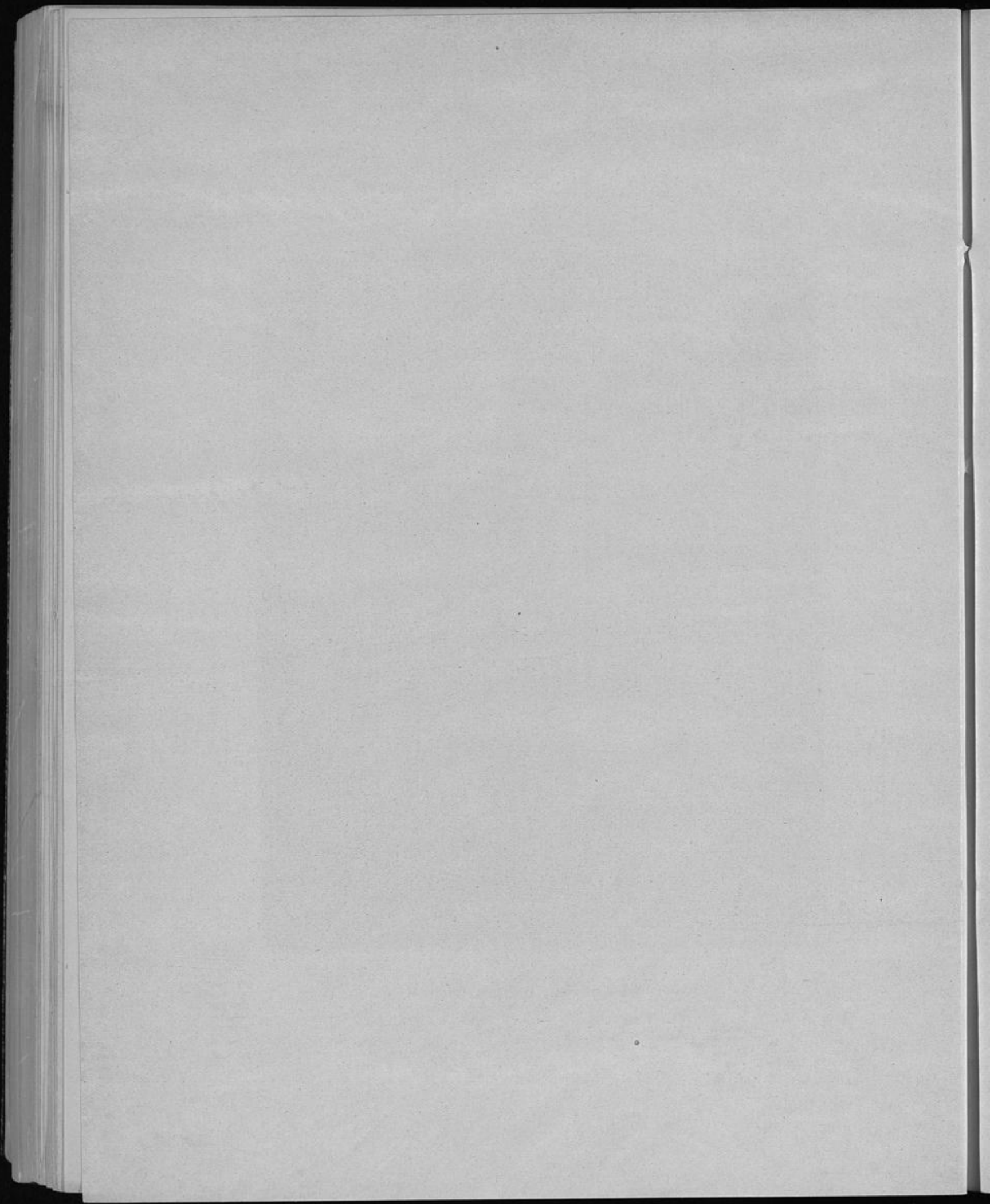


Angefertigt in Stadt-Vermessungsamt  
Düsseldorf, März 1898  
Krafft



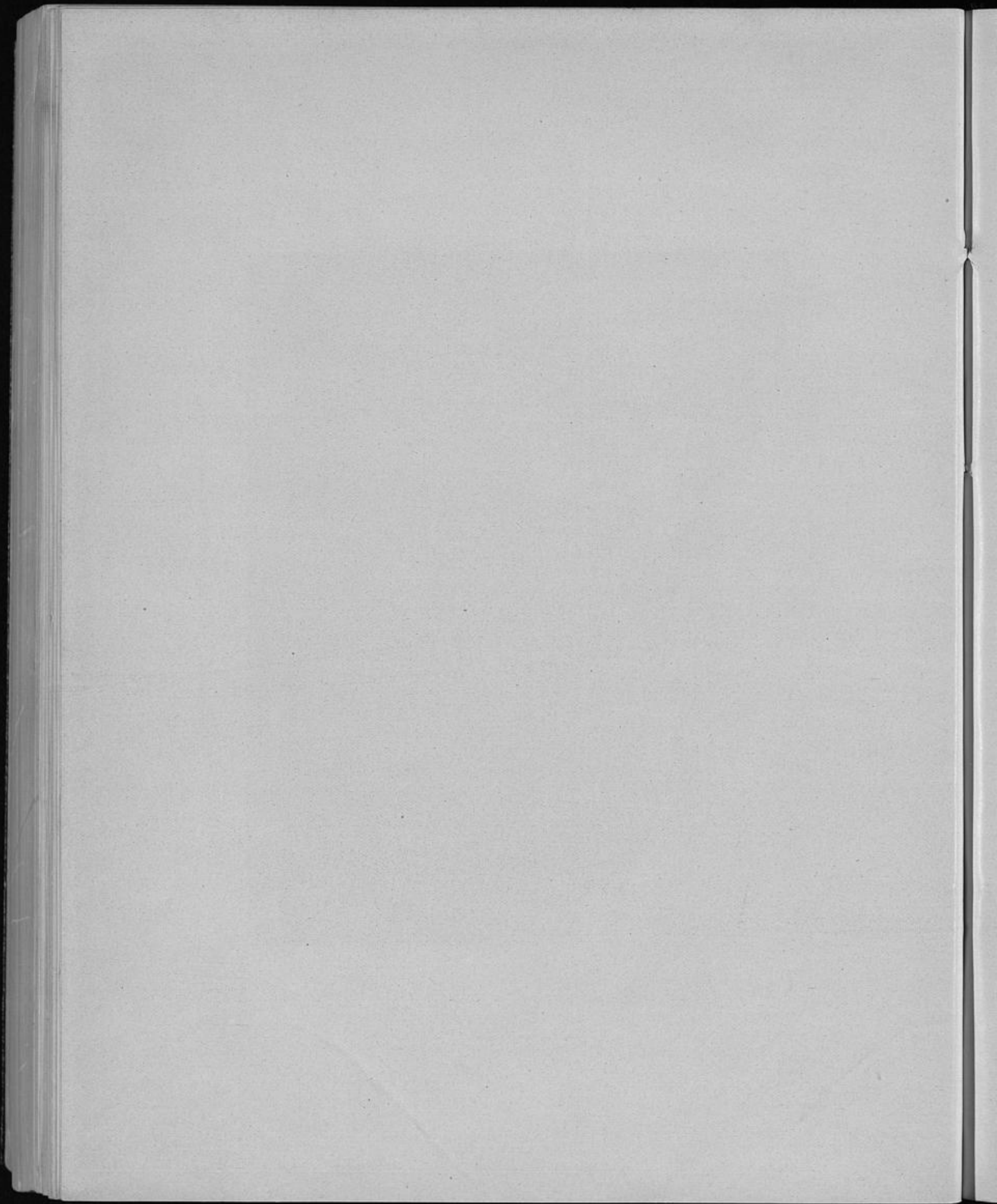


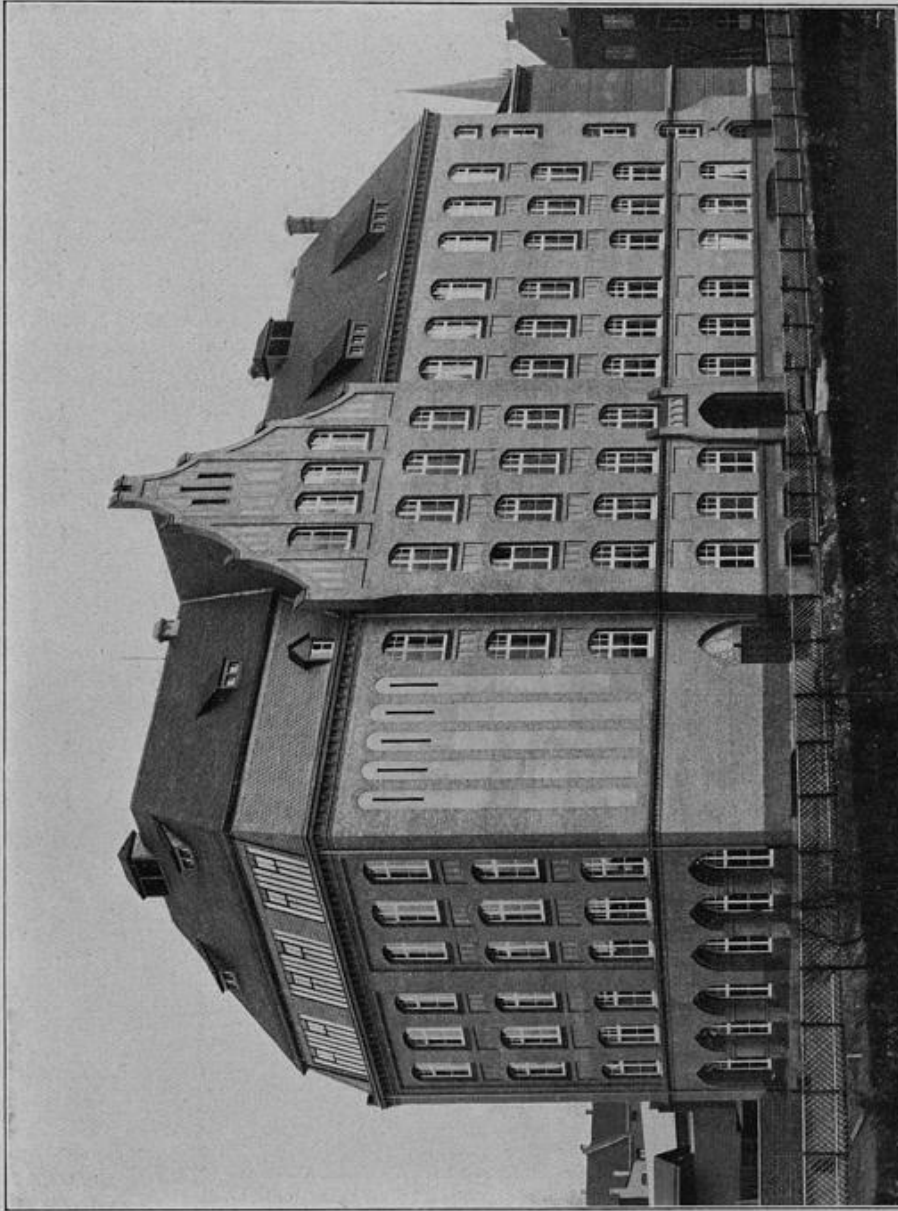
1. Knabenmittelschule an der Luisenstrasse.



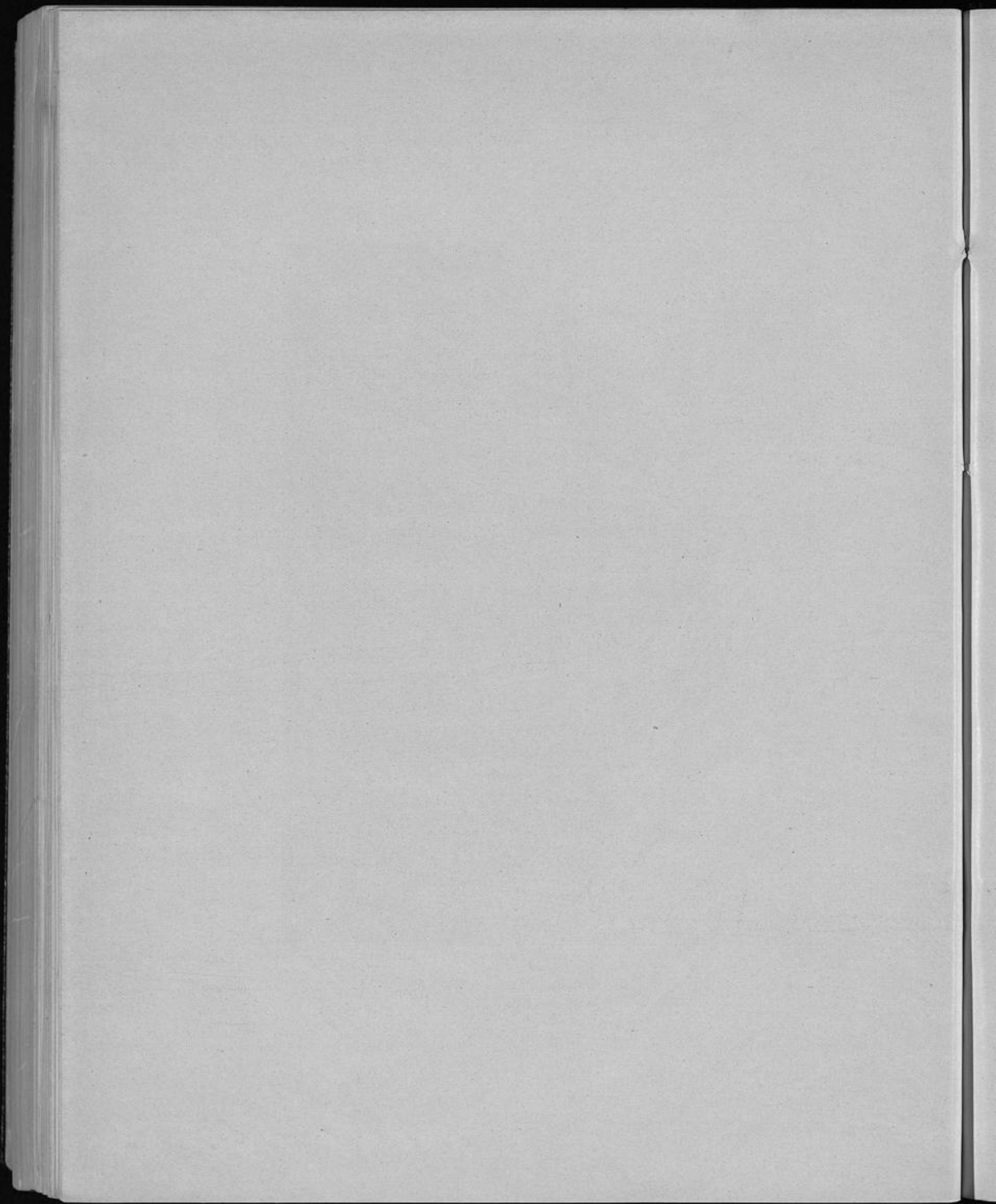


2. Volksschule an der Serresheimerstrasse.

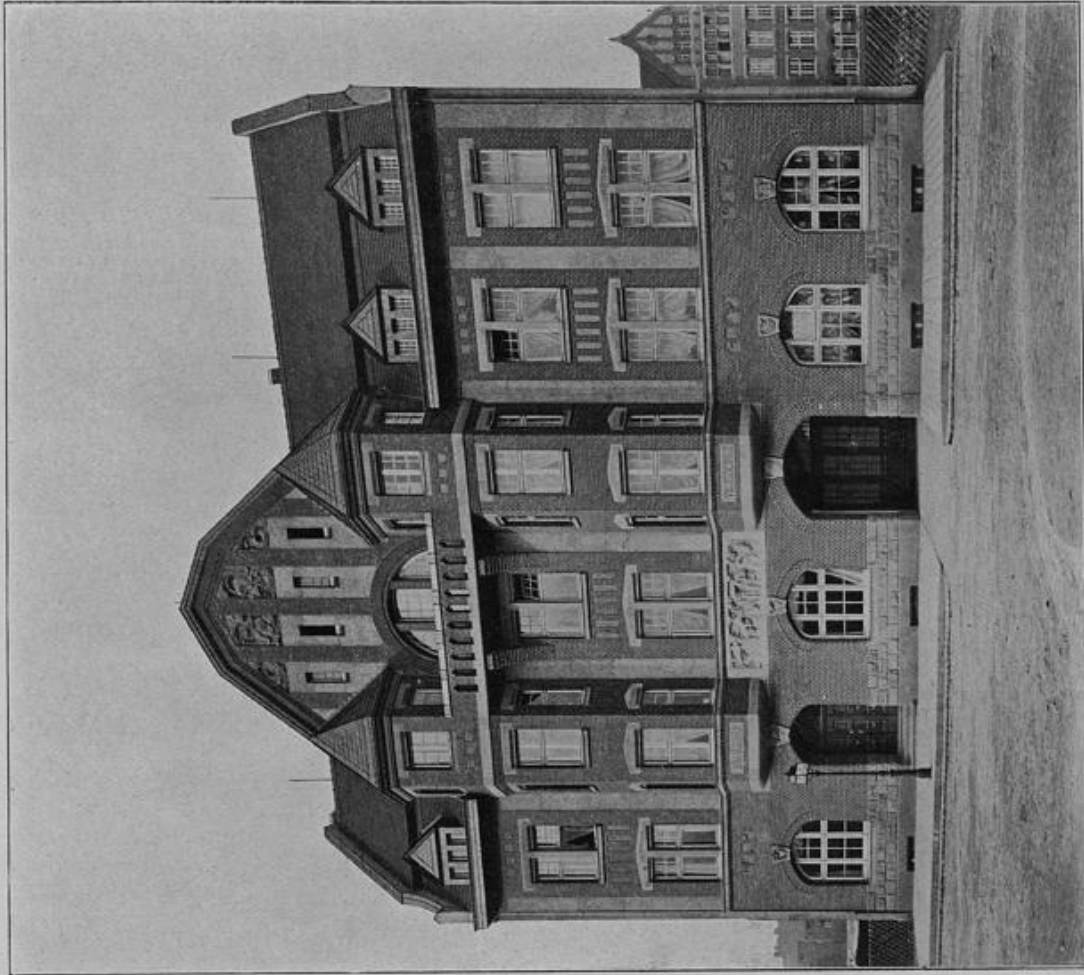




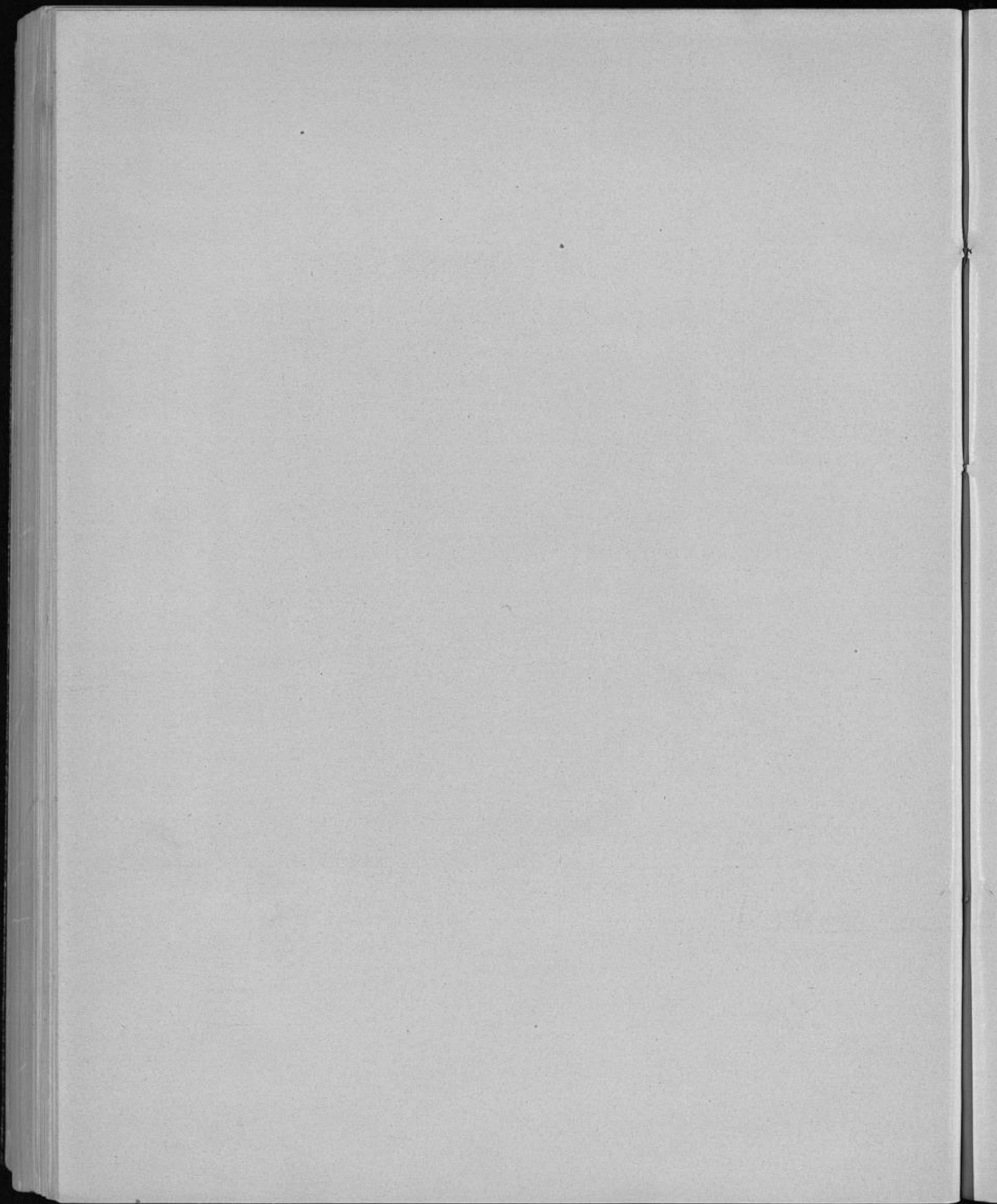
3. Volksschule an der Essenerstrasse.

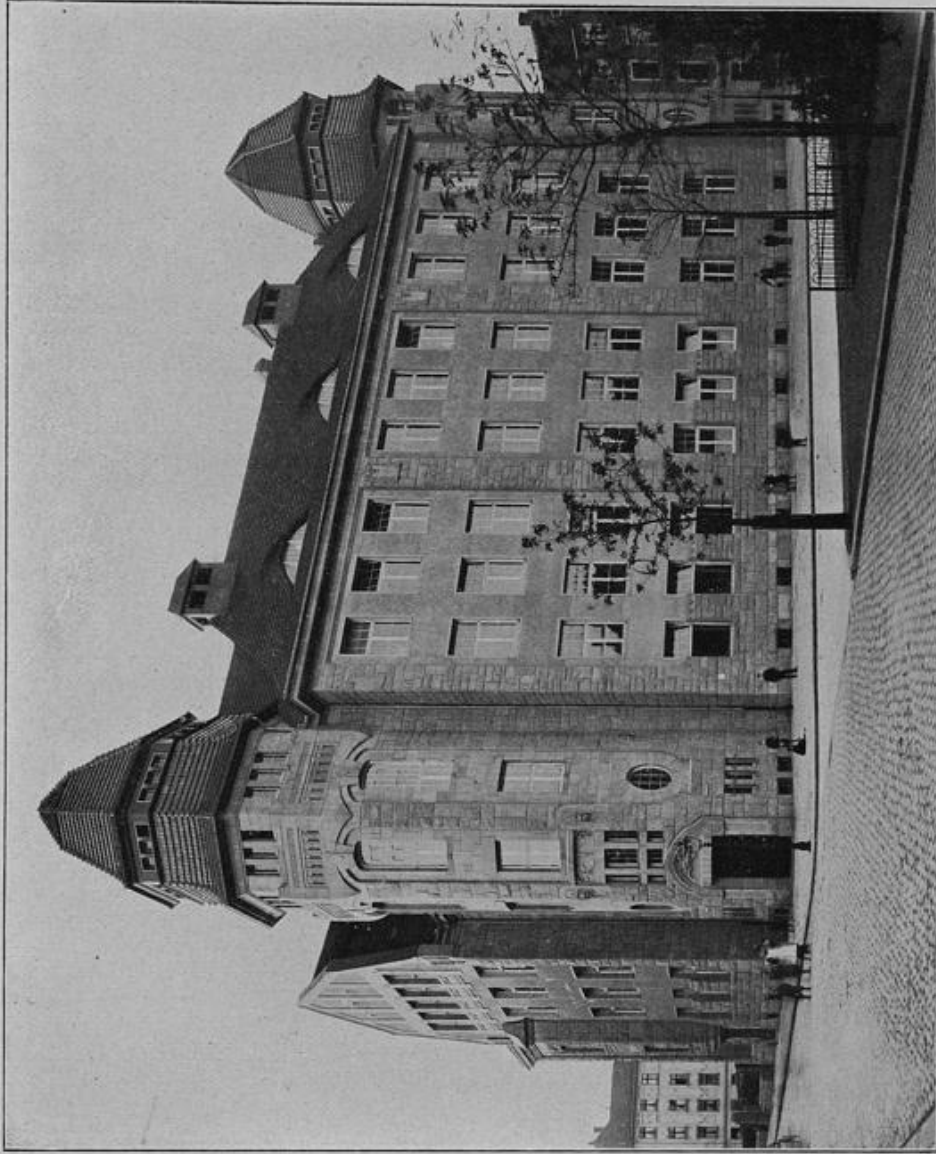




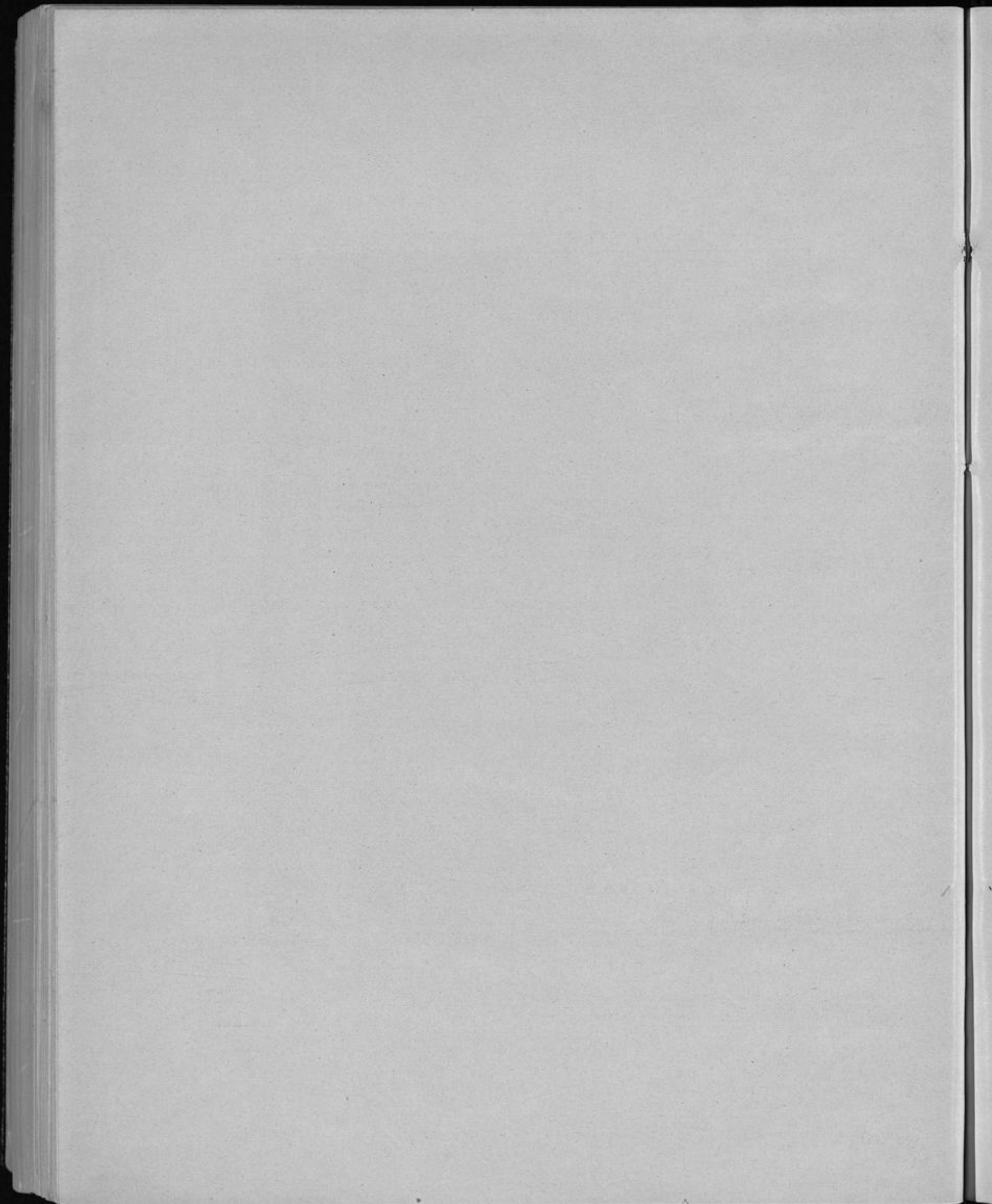


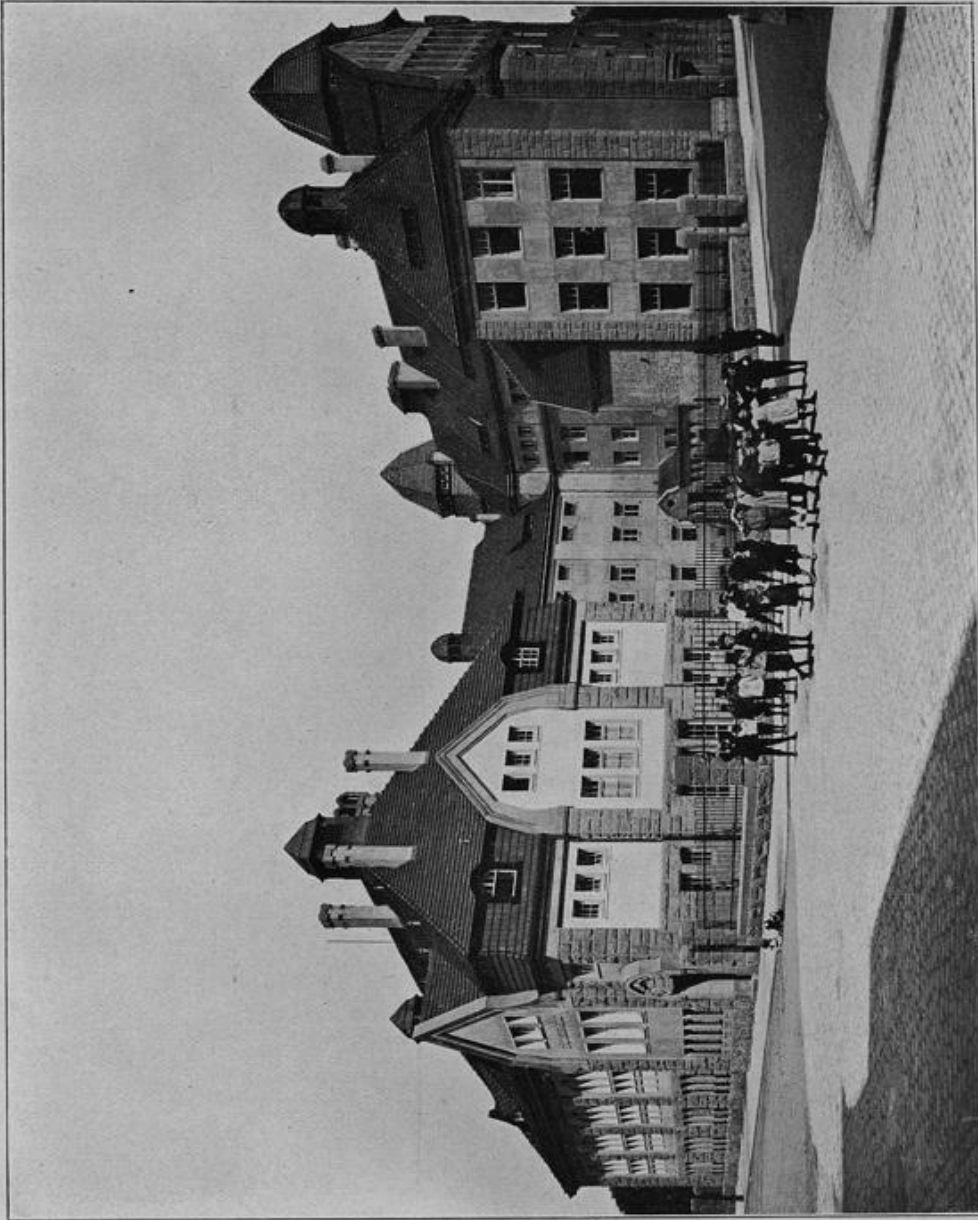
4. Rektorwohnhaus und Volksbadanstalt am Hermannplatz.



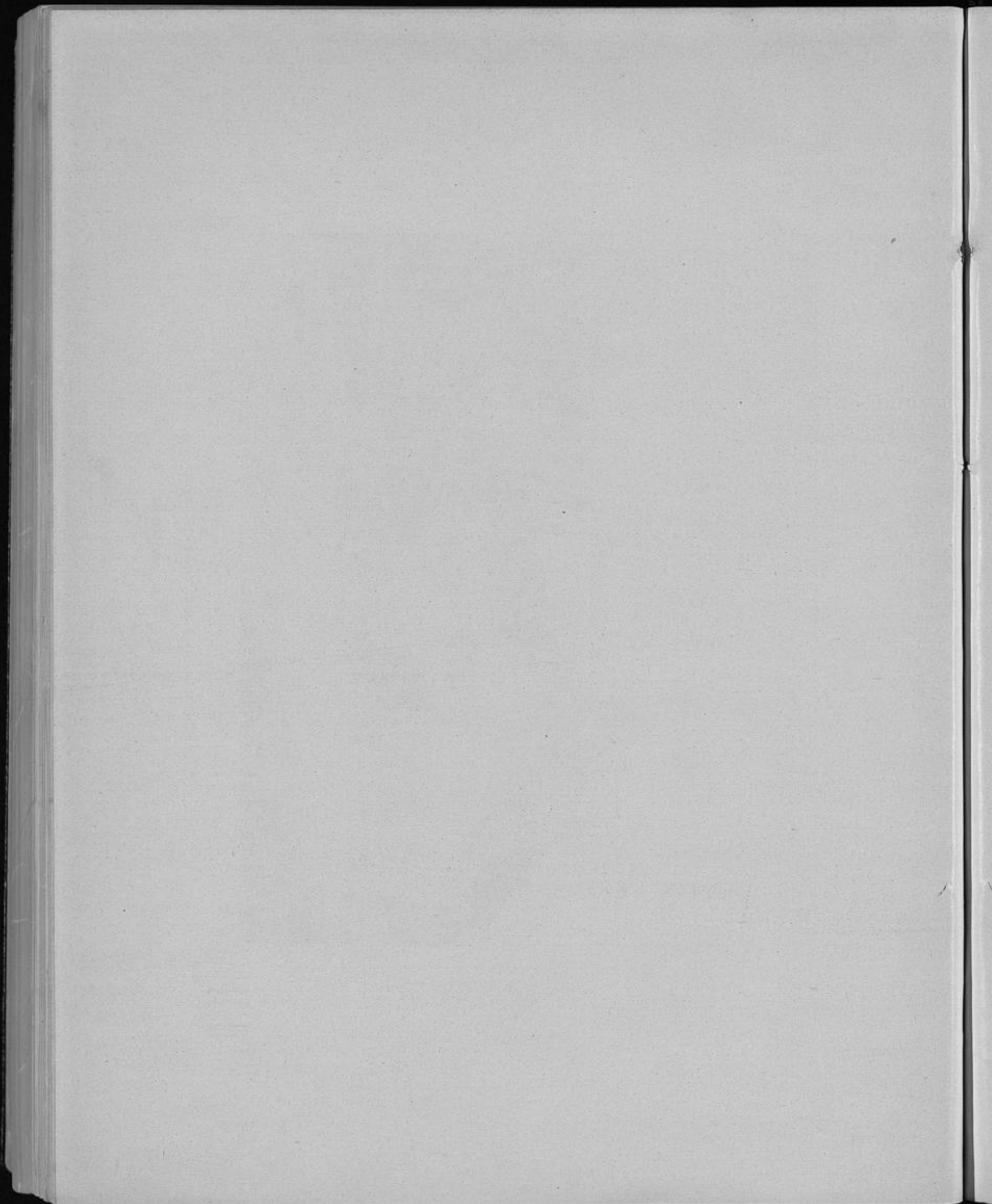


5. Volksschule an der Friedenstrasse.

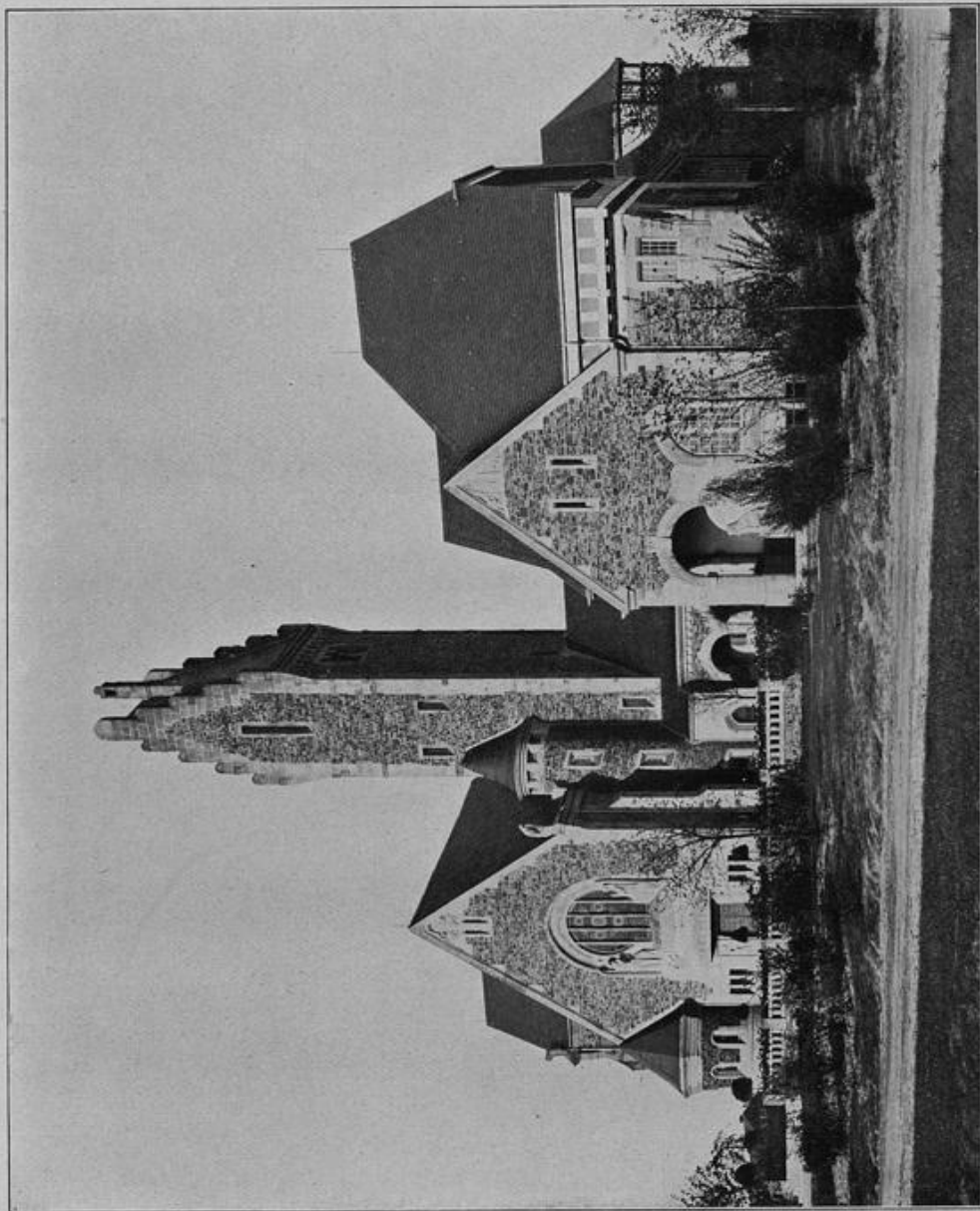




6. Volksschule mit Badeanstalt und Turnhalle  
an der Friedenstrasse.

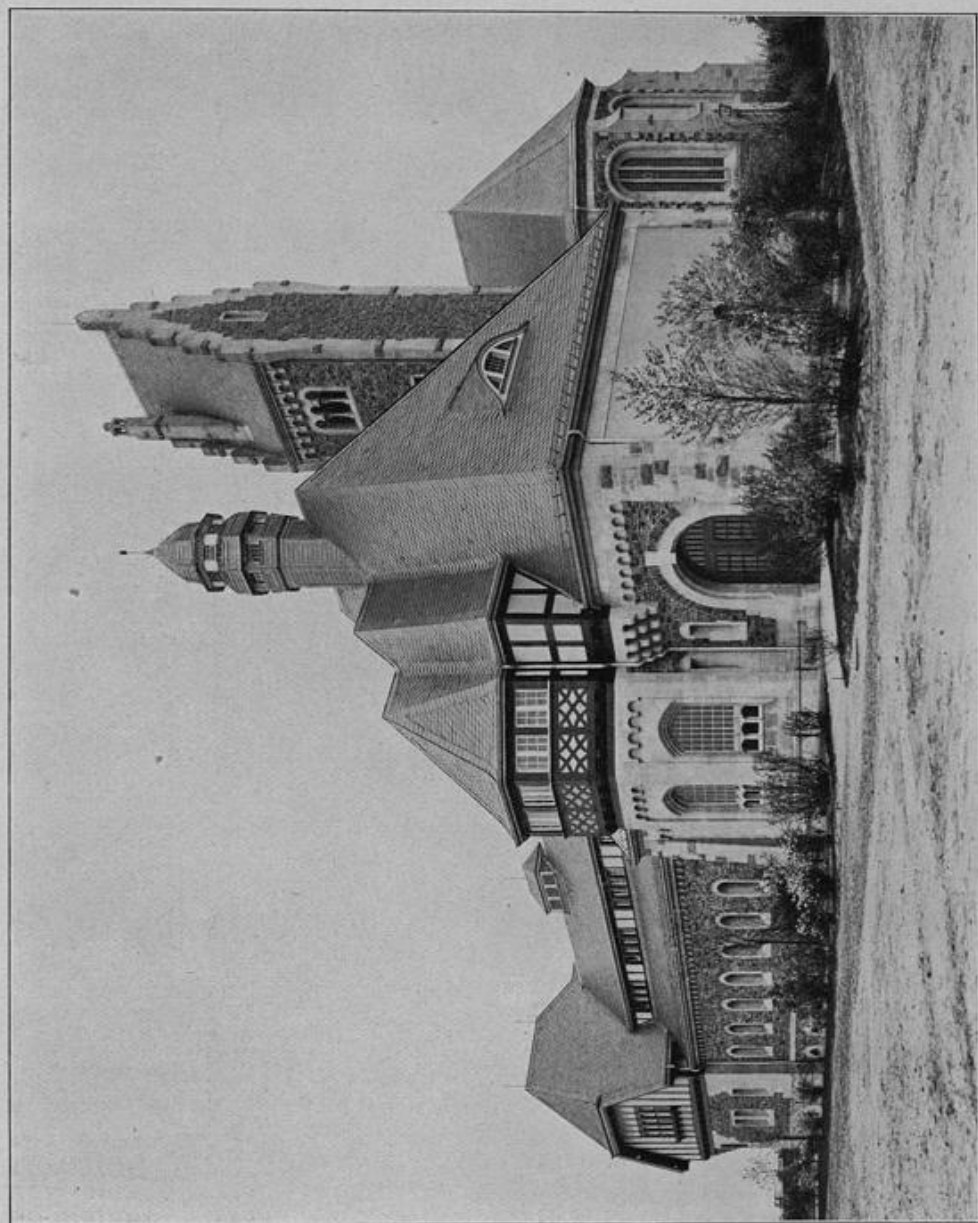




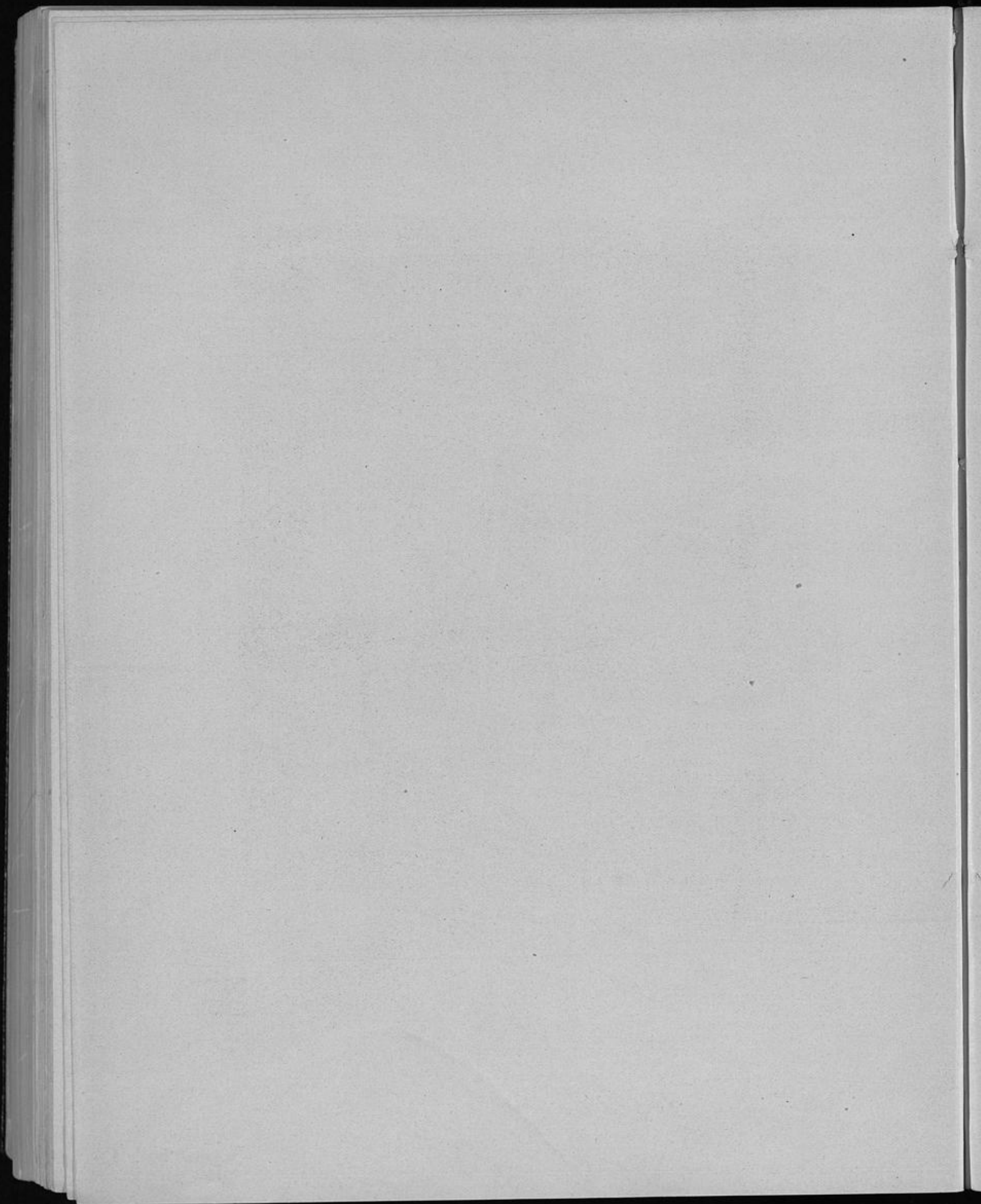


7. Kapelle und Leichenhalle — Südfriedhof.  
Südwestliche Ansicht.



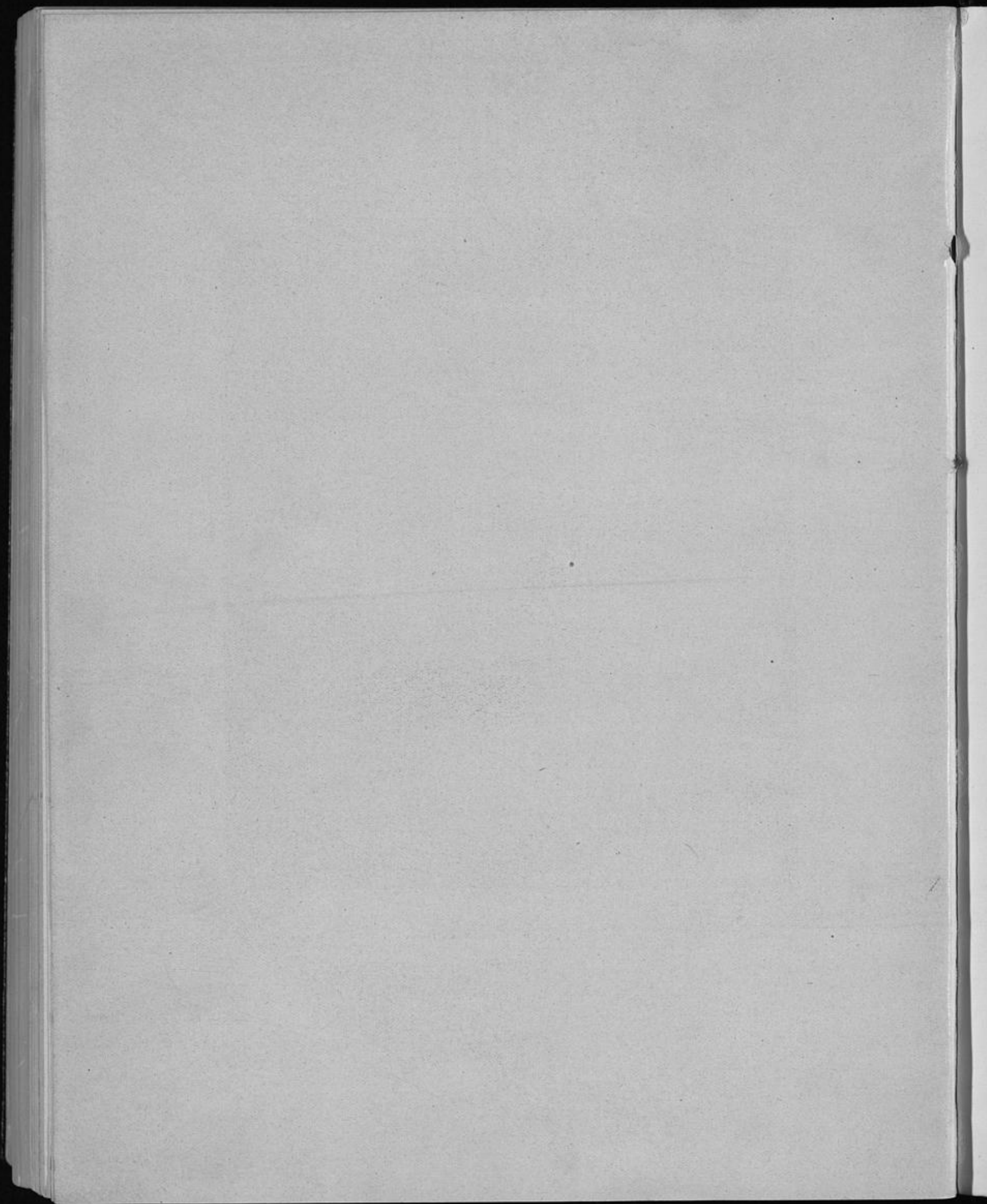


8. Kapelle und Leichenhalle — Südfriedhof.  
Südöstliche Ansicht.





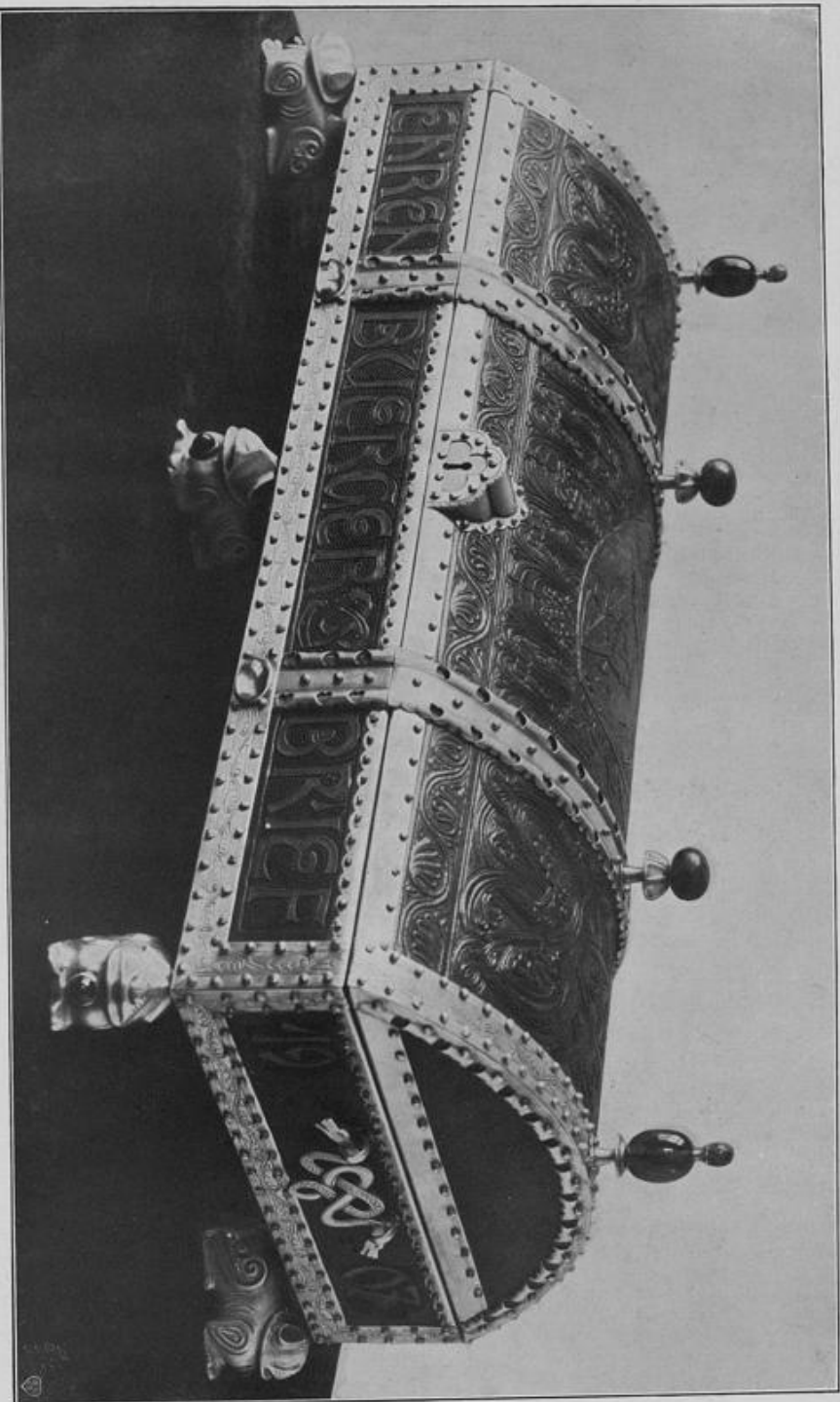
9. Kapelle Südfriedhof.  
Inneres.

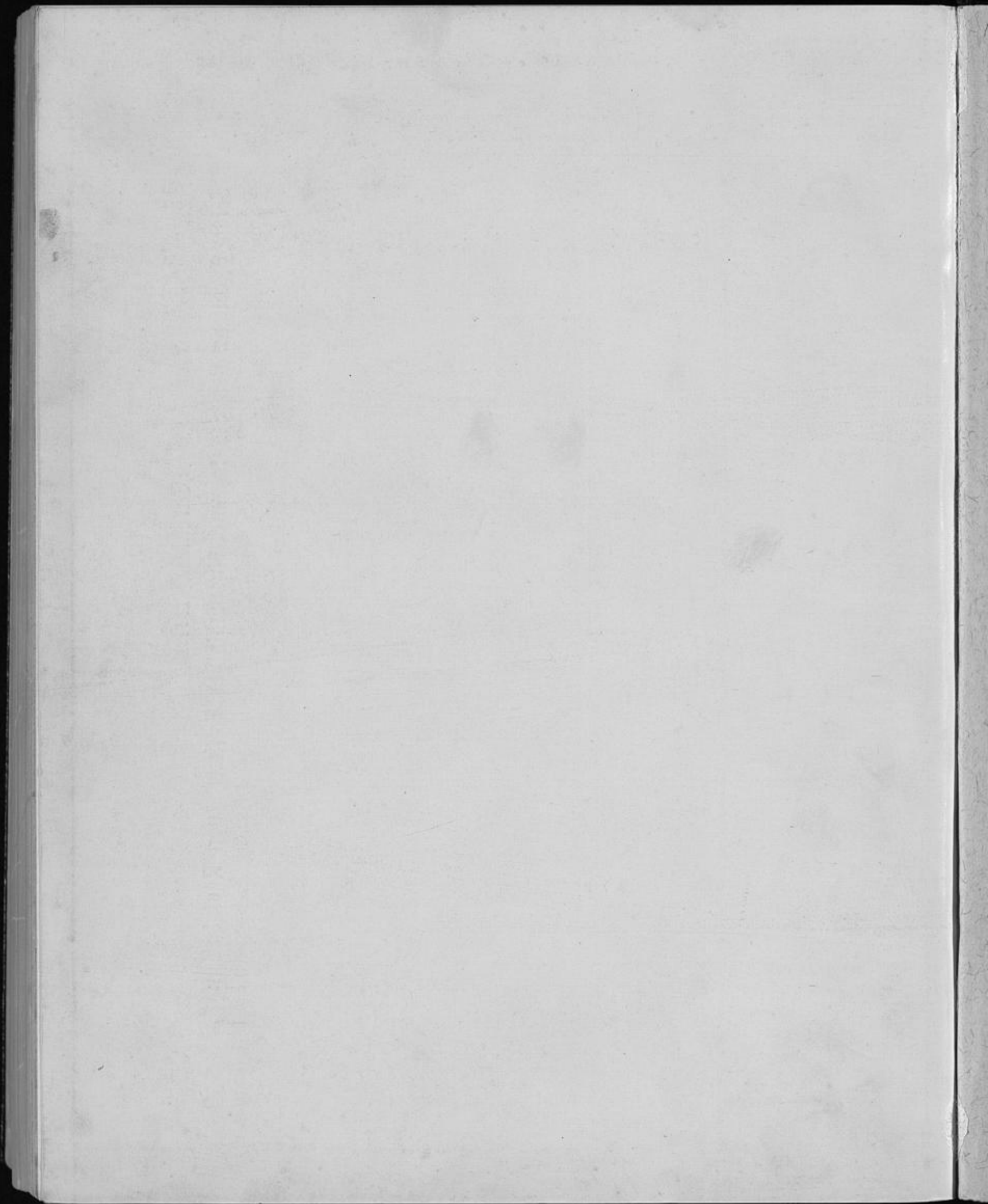






**Ehrenbürgerbrief  
für Seine Excellenz den Staats- und Finanzminister Freiherrn von Rheinbaben.**









Pa

Pa

