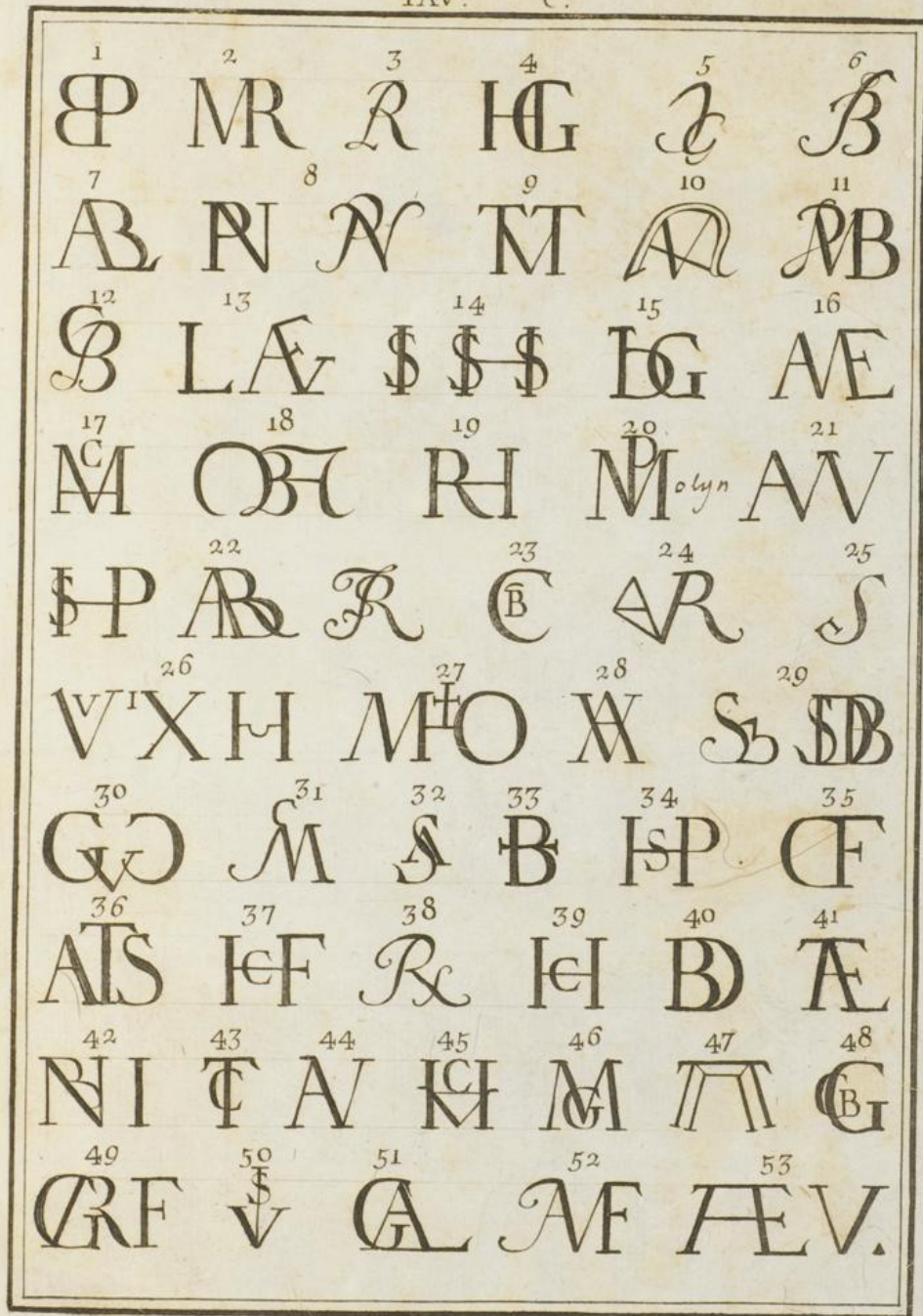


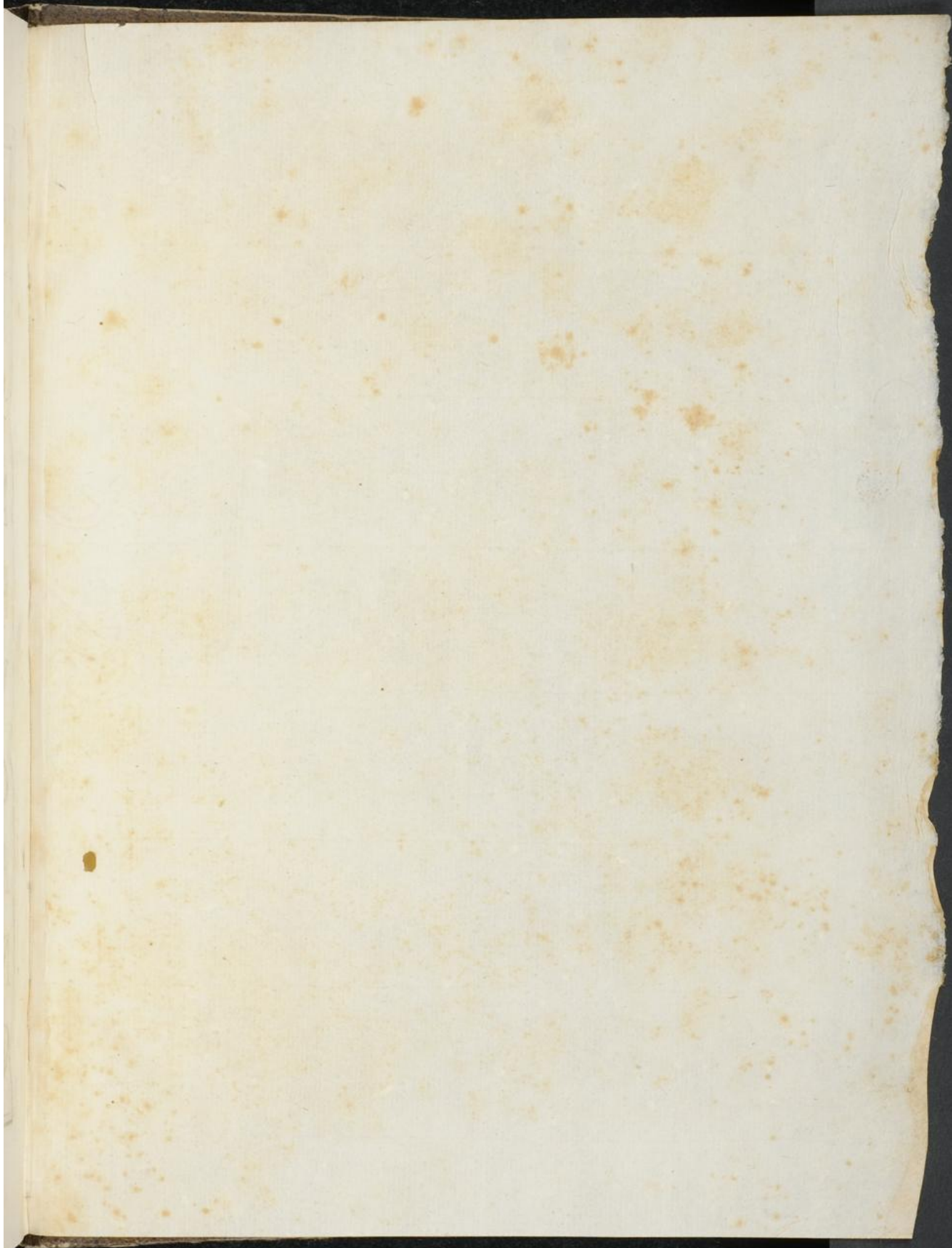
1	2	3	4	5	6
				noe 	DO CAP
7	8	9	10	11	12
	IBM		M3		
13	14	15	16	17	18
D  V	HE	ROM			
19	20	21	22	23	24
		M	V	N	HB
25	26	27	28	29	30
					OME
31	32	33	34	35	36
ME	V	↑	↓	NEM	ABD
37	38	39	40	41	42
HB	IG	IB	Φ	Φ	HK
43	44	45	46	47	48
HB					
49	50	51	52	53	54
		M	S	P	DIF
55	56	57	58	59	60
					
61	62	63	64	65	66
			B	HE	NW
67	68	69	70	71	72
		B	HE	NW	DW

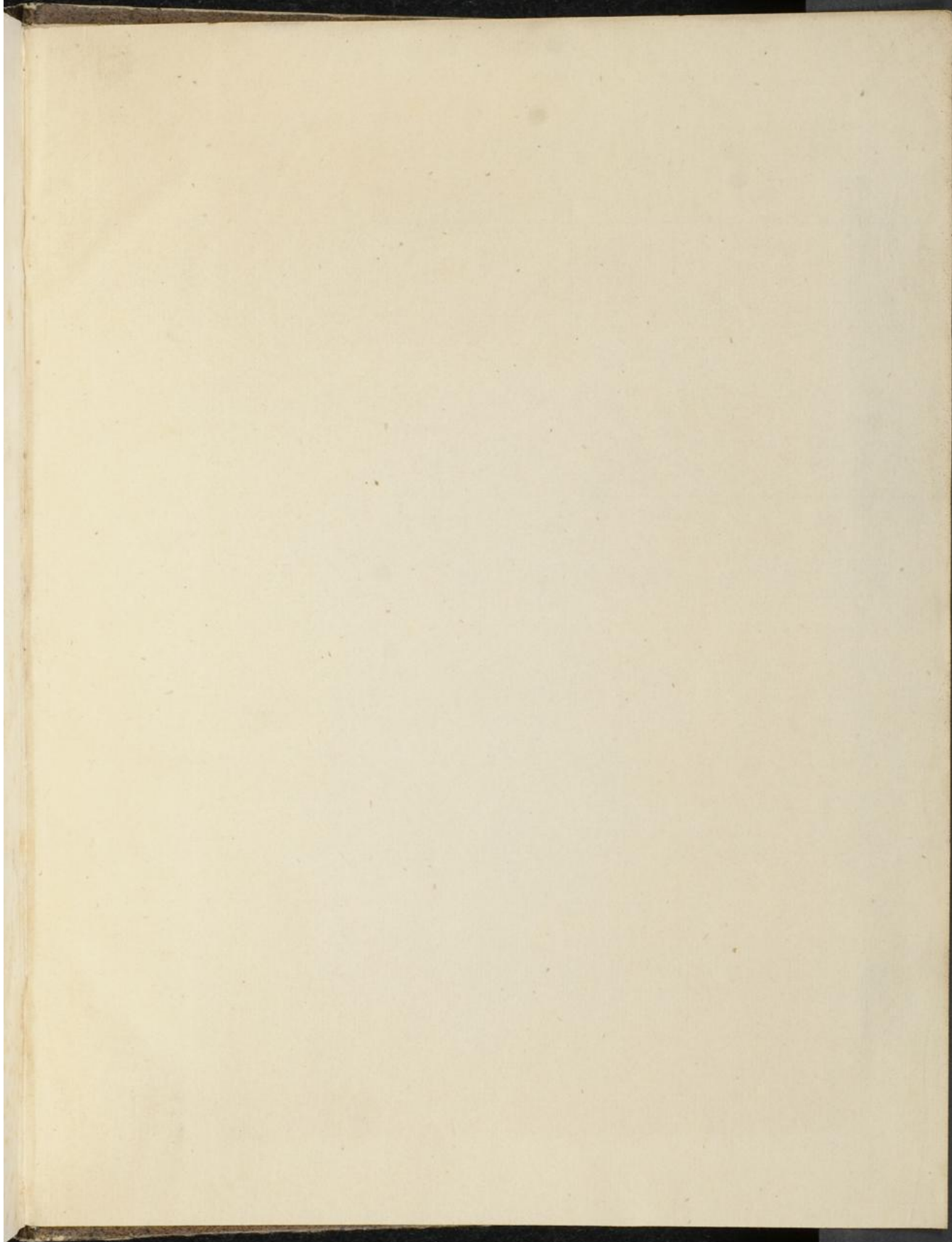
1	2	3	4	5
6	7	8	9	10
11	12	13	14	15
16	17	18	19	20
21	22	23	24	25
26	27	28	29	30
31	32	33	34	35
36	37	38	39	
40	41	42	43	44
45	46	47	48	
49	50	51	52	53

Handwritten text in a medieval script, possibly Gothic or Carolingian minuscule, arranged in approximately 10 lines within a rectangular border. The text is mirrored or bleed-through from the reverse side of the page. The characters are highly stylized and include various ligatures and decorative elements. Some characters are enclosed in boxes, and there are small numbers or annotations above certain letters. The text is difficult to decipher due to its orientation and the quality of the ink.



B M R H S
 A B R K T W
 P L A S S
 M O B R M A
 P A R C A
 V X H W O K S
 G G W A B P D
 A S H R H B A
 R I T A K W T I
 G R E V A M A F E N





VI/ 354. 530. 17. f. 10

1116/26

6,35
1,50 Aufschlag für Zinsen
7,85

