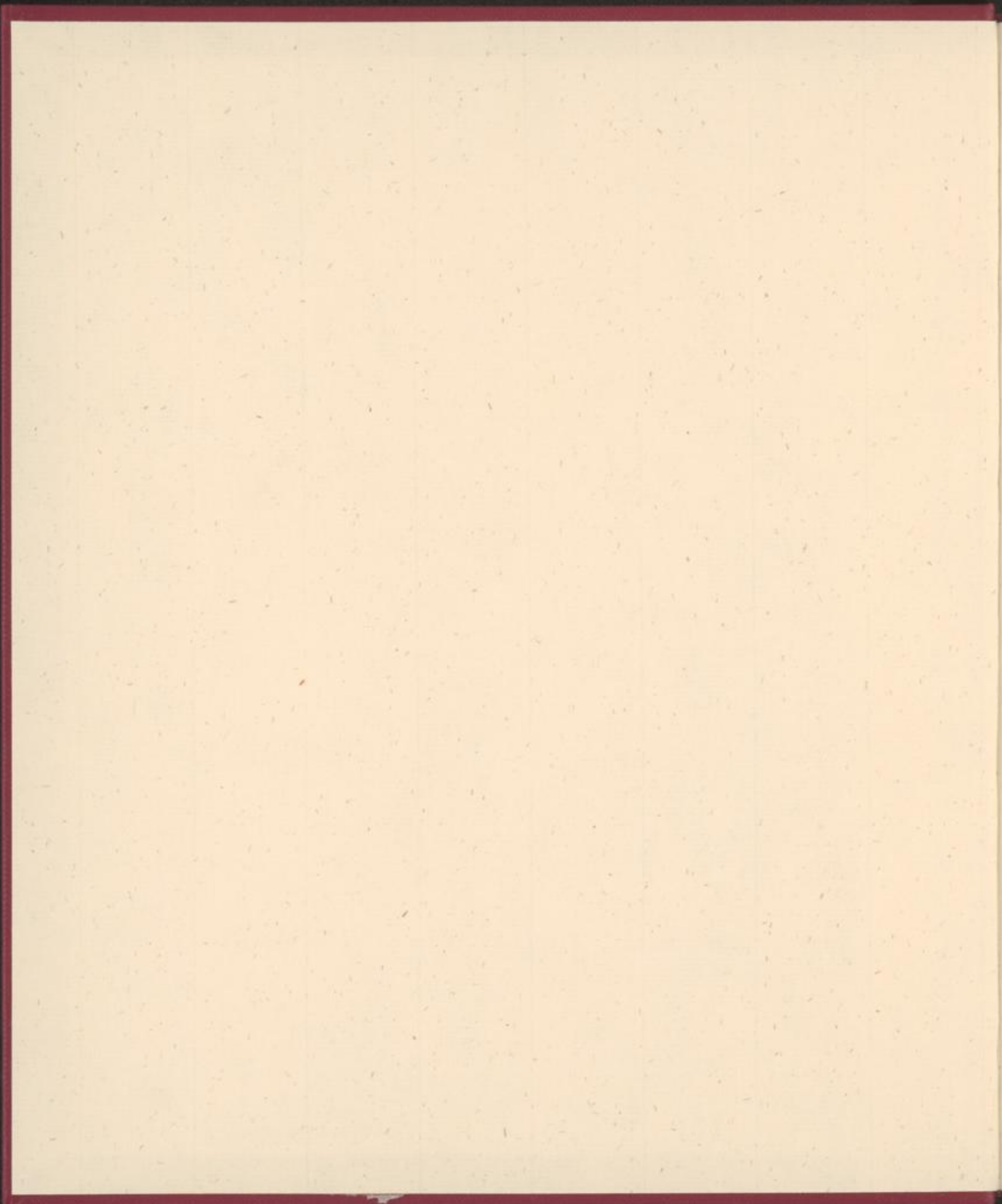


Abbildungen
von den Garnison-Lazarethen
I und II Berlin
sowie von Sanitätsmaterial
der Königlich Preussischen Armee.

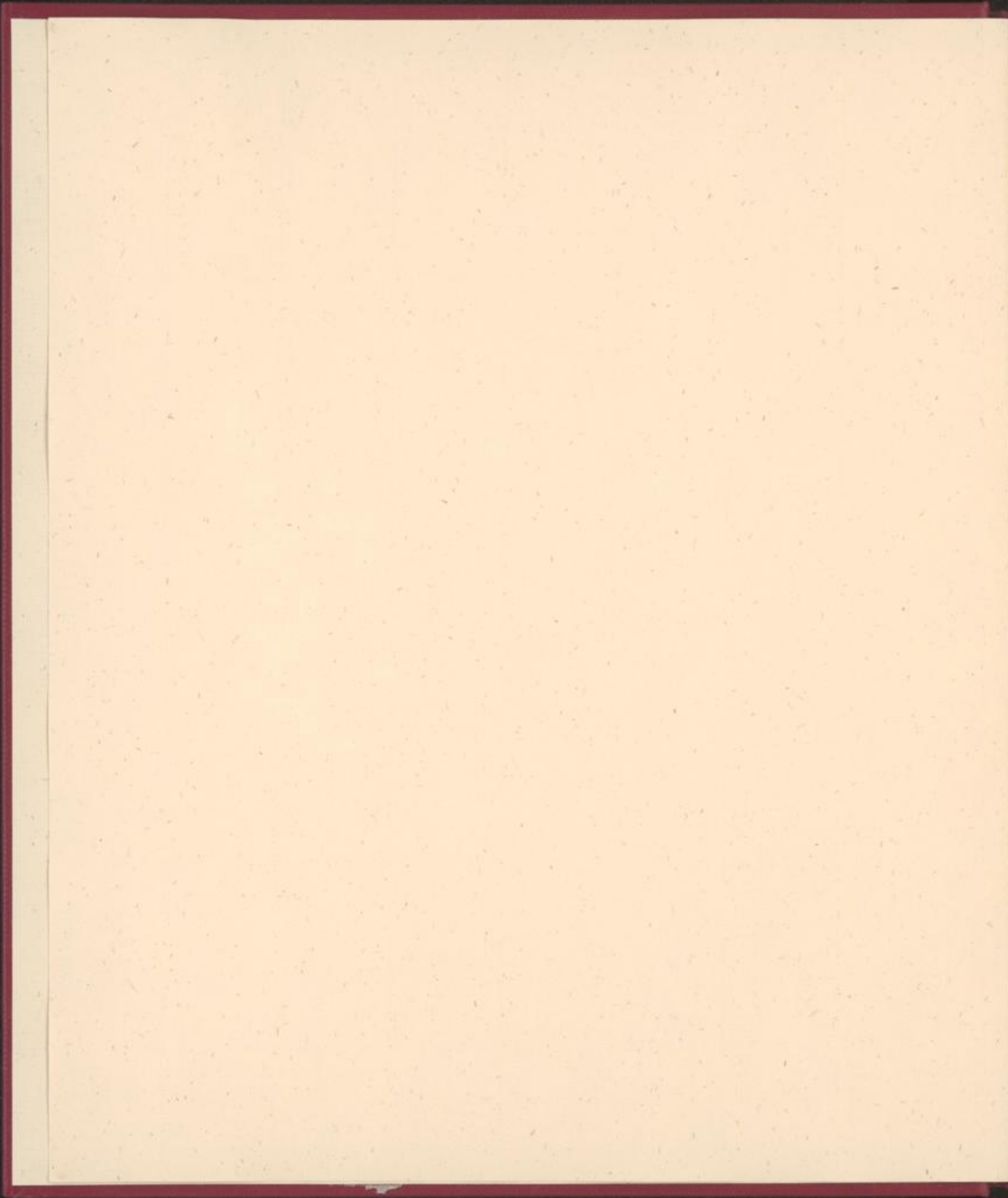
Herausgegeben.

VON

Königlich-Preussischen Kriegsministerium,
Medizinal-Abtheilung
Berlin 1890.





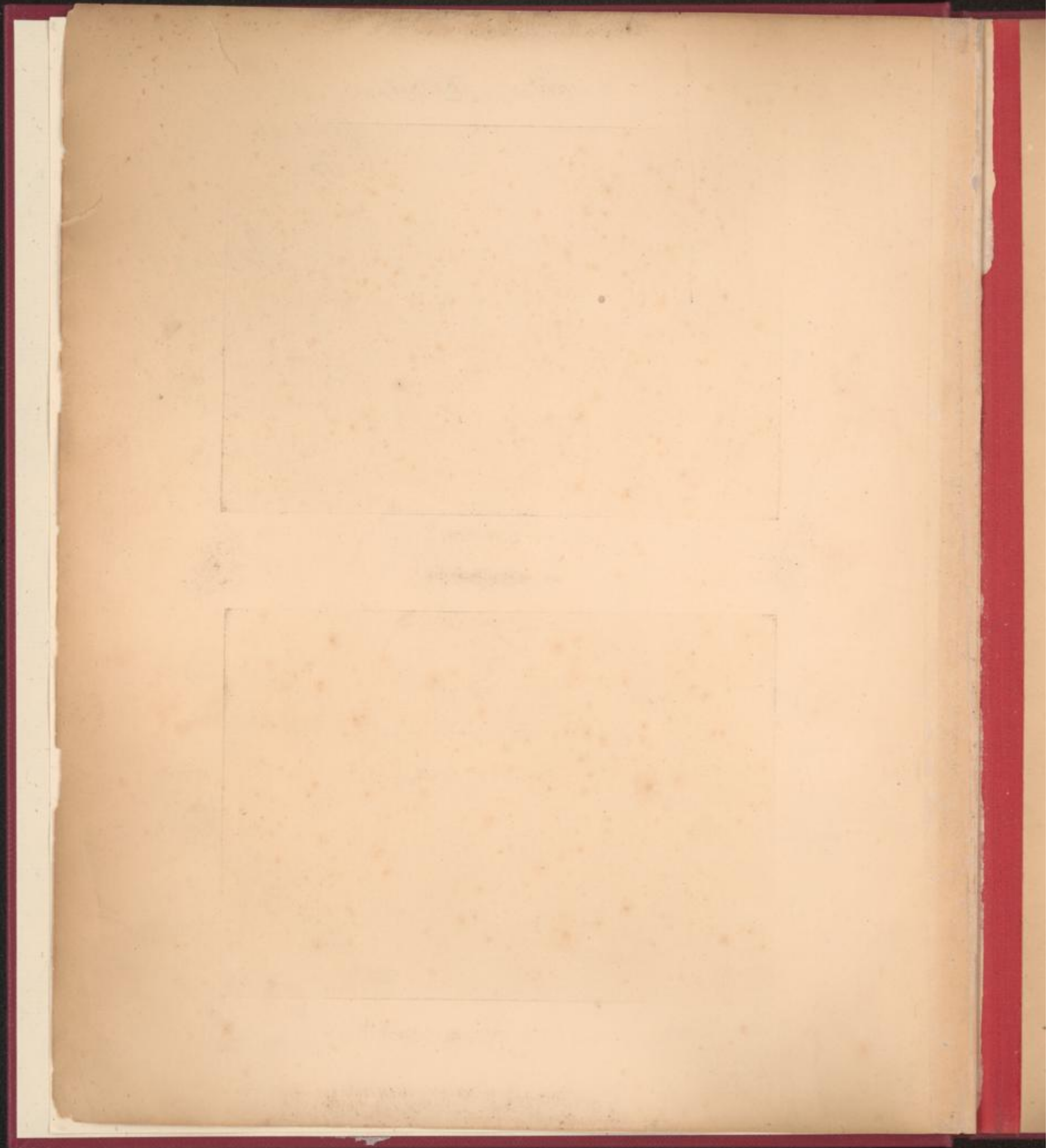


F. Jäncke. mit. Longoest.

Berlin

1890.

A. Bunge





Friedrich-Wilhelms-Institut,
Lehrgebäude.



Friedrich-Wilhelms-Institut,
Denkmal des Generalstabsarzt Dr. Goercke.

XI
20. K





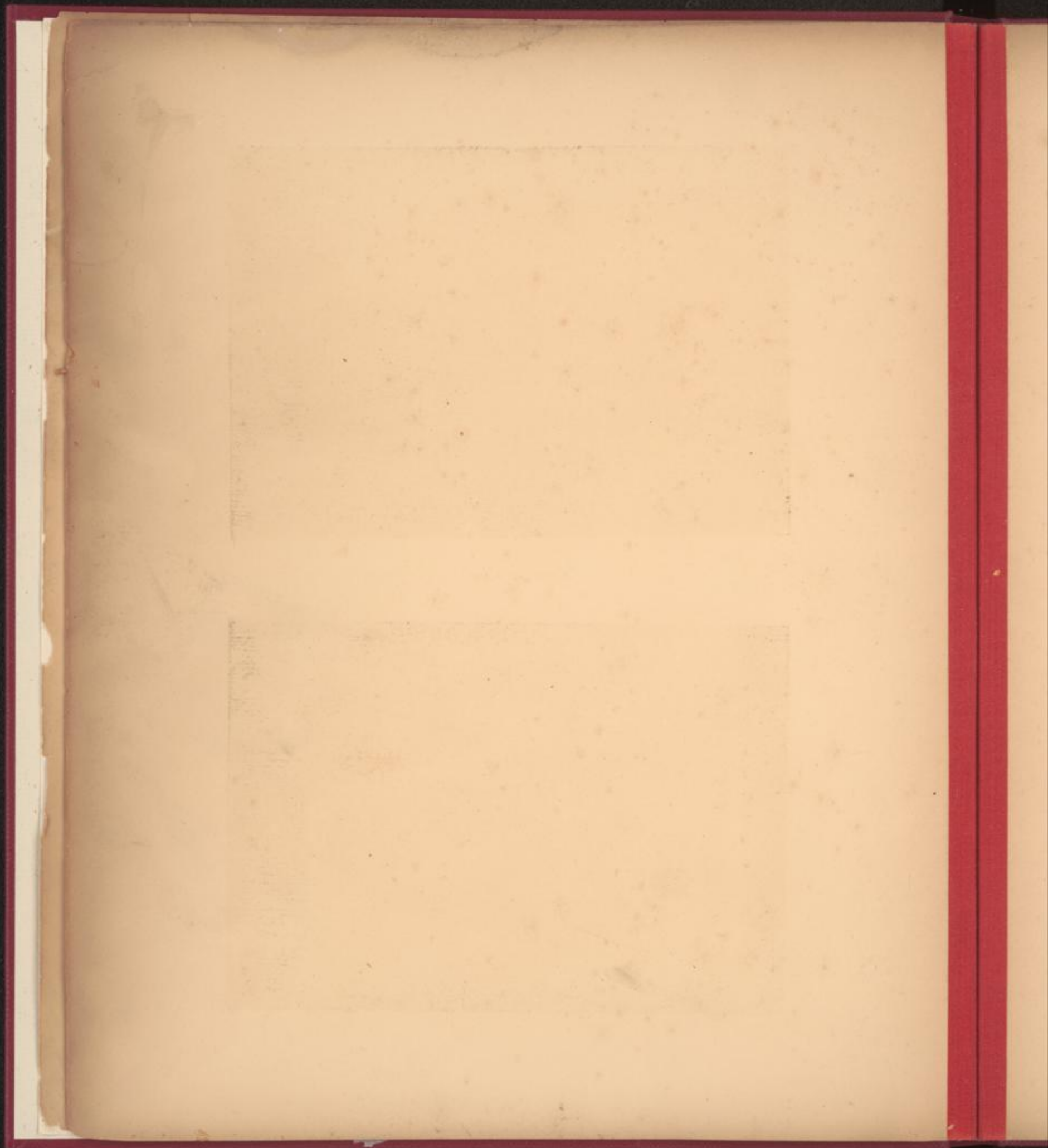


Garrison-Lazareth Berlin I
(Scharnhorststr. 11/12).



Garrison-Lazareth Berlin I,
Militair-Lazareth-Baracke.







Garrison-Lazareth Berlin II (Tempelhof),
Verwaltungs-Gebäude.



Garrison-Lazareth Berlin II,
Koch- und Waschhaus.







Garrison-Lazareth Berlin II,
Krankenblock.



Garrison-Lazareth Berlin II,
Isolir-Baracke.







Garrison-Lazareth Berlin II,
Militair-Lazareth-Baracke.



Garrison-Lazareth Berlin II,
Küche.



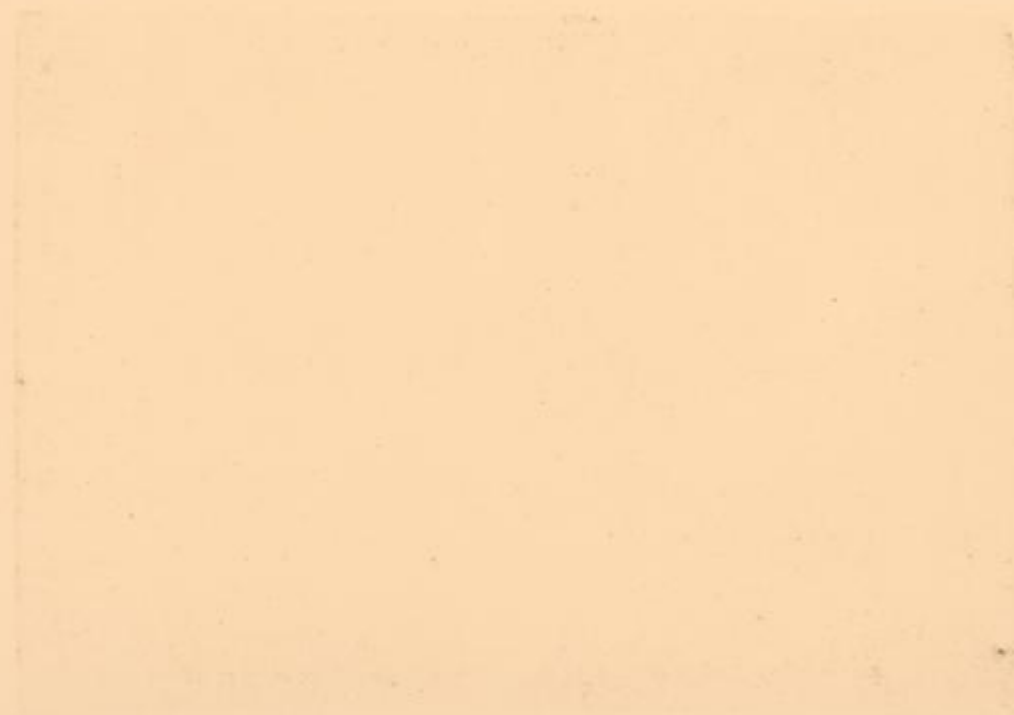


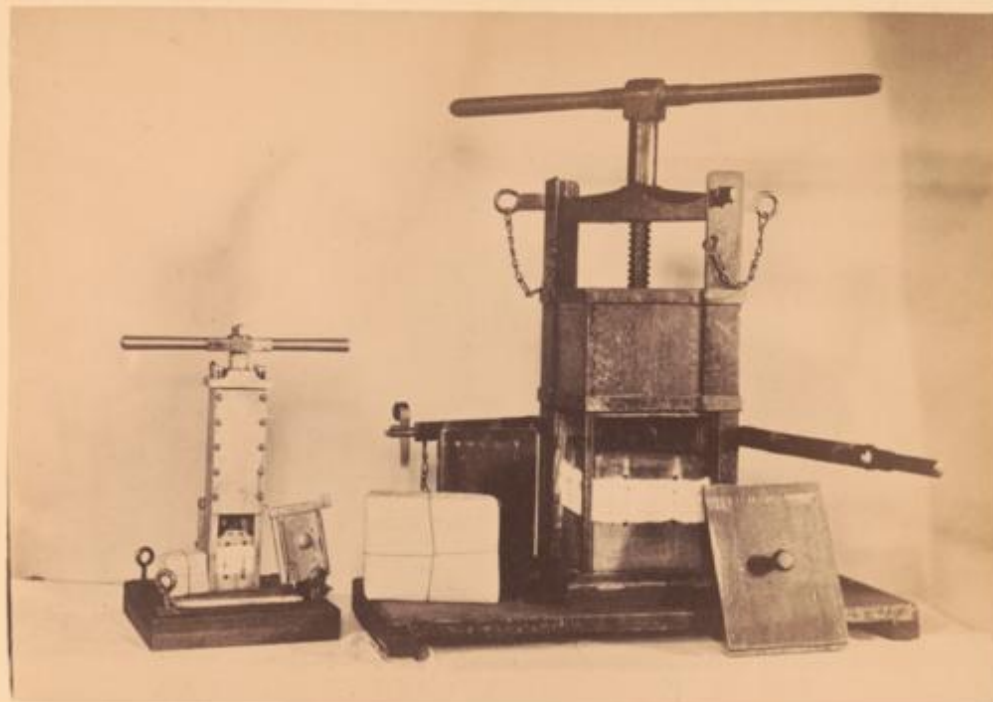
Garrison-Lazareth Berlin II,
Kleines Krankenzelt.



Sanitätswagen eines Feldlazareths.







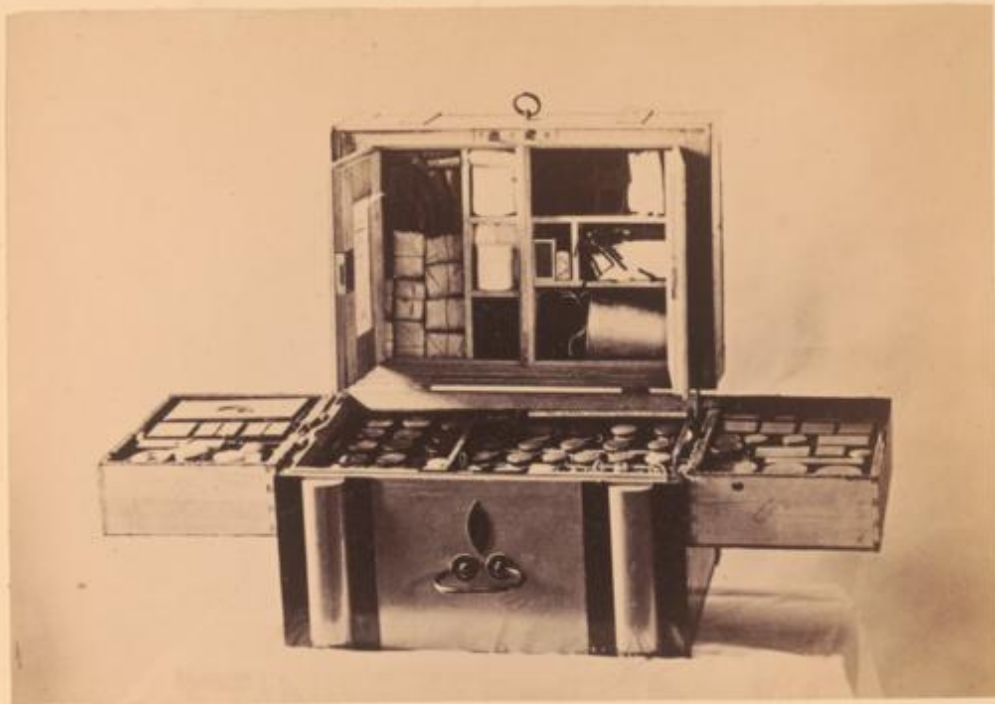
Pressen für Verbandstoffe.



Lazarethgehilfentasche.





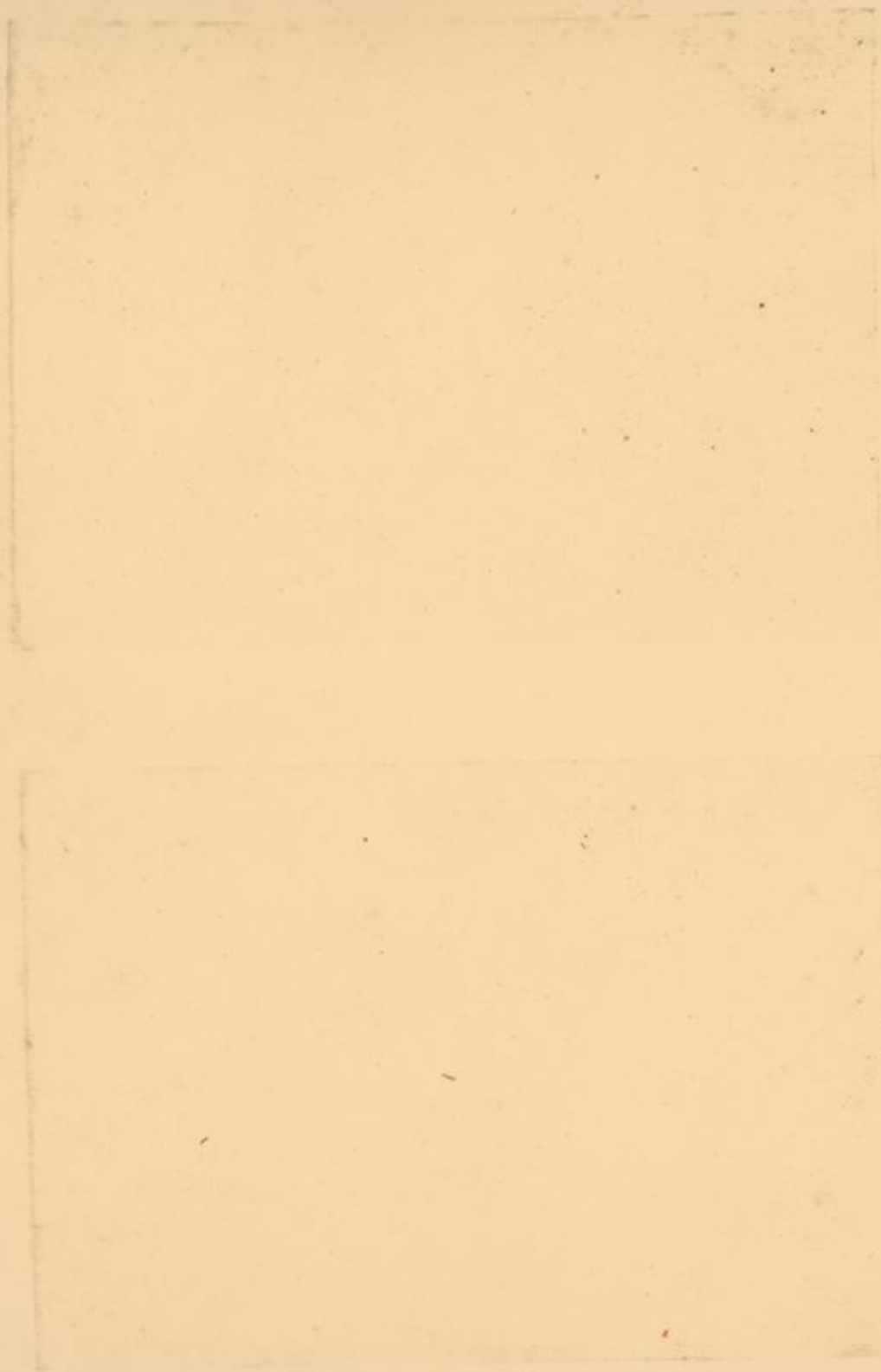


Batterie-Medizin- und Bandagenkasten.



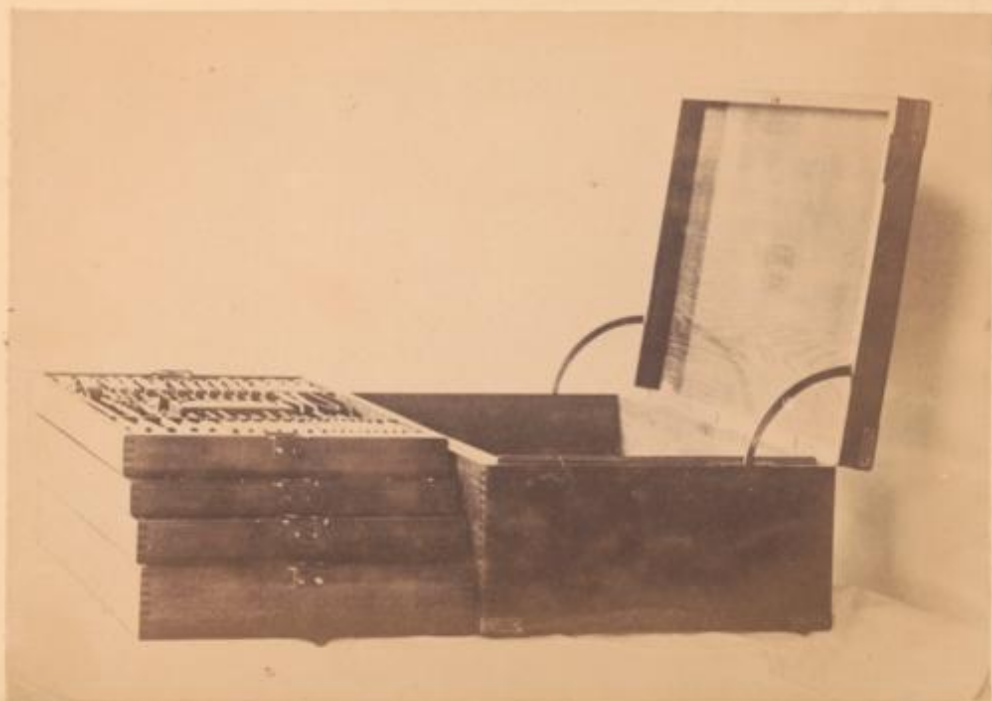
Lagerungsvorrichtung für Schwerverwundete.





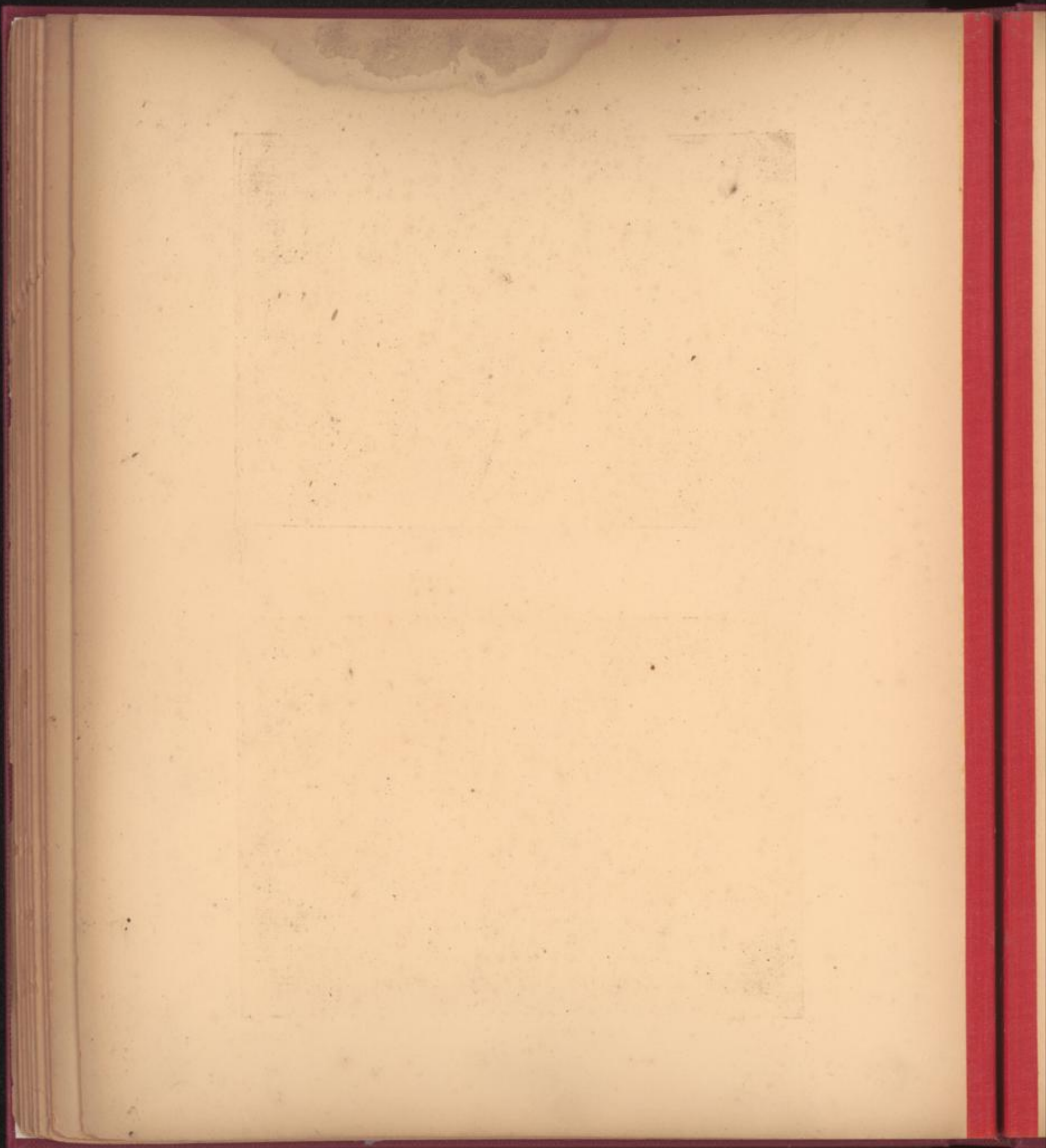


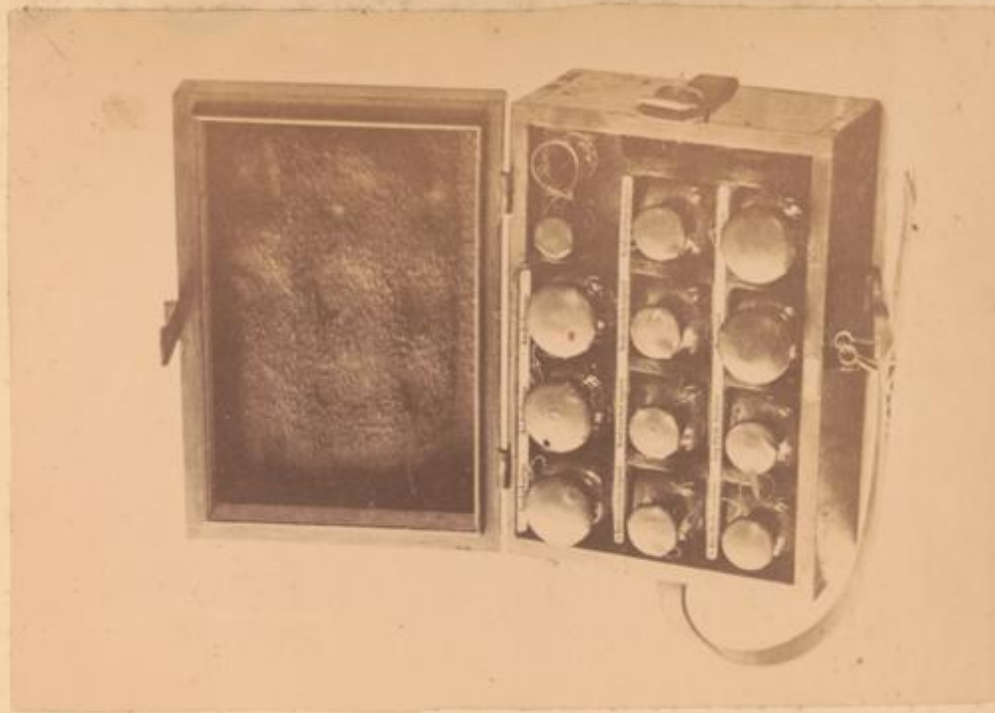
Grosses Operationsbesteck.



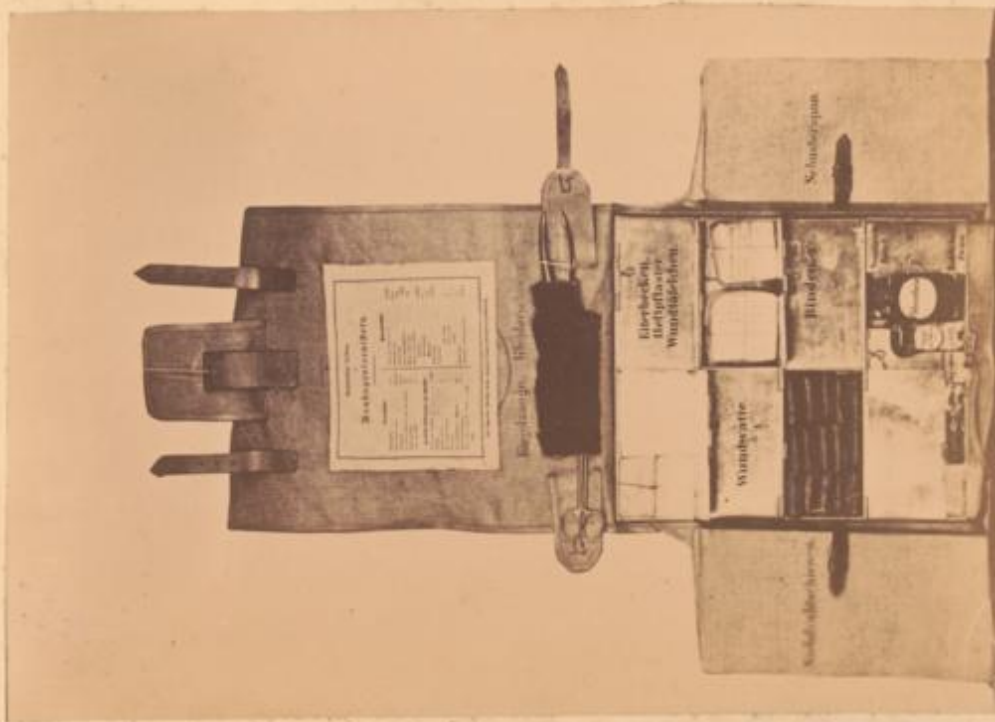
Grosses Operationsbesteck.







Kasten für Antiseptica.



Bandagentornister.



