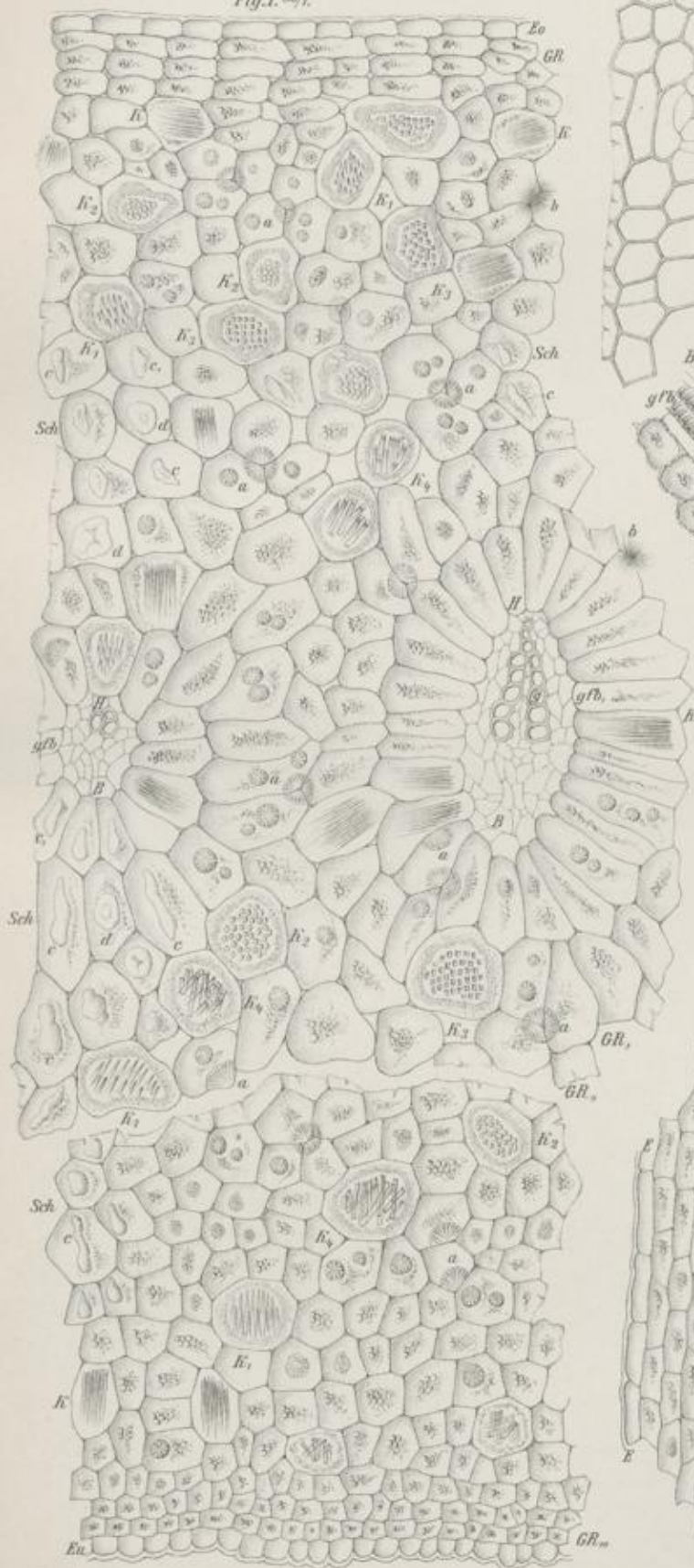


Bulbus Scillae.

L. Koch, Pharmakognostischer Atlas Bd. II.  
Fig. I. 80 $\times$ .



L. Koch, 912

Fig. III. 100 $\times$ .



Fig. IV. 100 $\times$ .  
Ta. XVII.

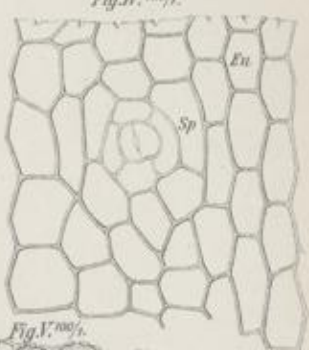
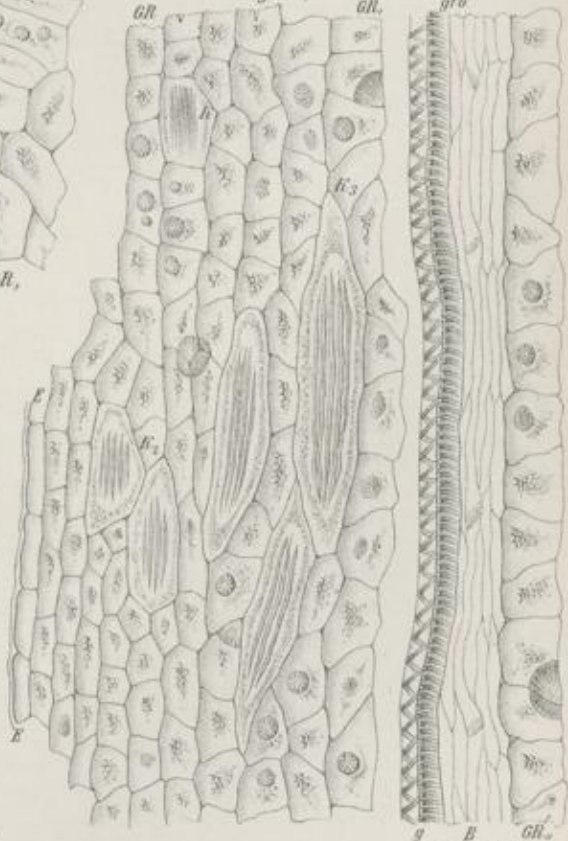


Fig. V. 100 $\times$ .



Fig. II. 80 $\times$ .



H. L. L. Lith. Inst. Berlin.

