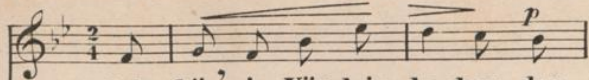


ICH HÖR' EIN VÖGLEIN LOCKEN.

Andante con moto. v. Flix. Mdlr. Bartholdy.

SINGSTIMME.



PIANOFORTE.



wirbt so süß, das wirbt so laut beim Duft der Blumen.

glo-cken um die ge-lieb-te Braut, um

V.S.

die ge-lieb-te Braut.

This system contains the first line of music. The vocal line begins with a treble clef, a key signature of two flats, and a common time signature. The lyrics "die ge-lieb-te Braut." are written below the notes. The piano accompaniment consists of two staves, with the right hand playing chords and the left hand playing a bass line.

Und aus demblauen Flie-der singt

eres.

eres.

This system contains the second line of music. The vocal line continues with the lyrics "Und aus demblauen Flie-der singt". The word "eres." appears above the final note of the vocal line. The piano accompaniment continues with similar harmonic support.

oh - neRastund Ruh² Mil - lio - nenLiebes -

f

This system contains the third line of music. The vocal line has the lyrics "oh - neRastund Ruh² Mil - lio - nenLiebes -". A dynamic marking of *f* (forte) is placed above the final note of the vocal line. The piano accompaniment features more complex chordal textures.

lie - der die hol - de Braut ihm zu, Mil - -

This system contains the fourth line of music. The vocal line concludes with the lyrics "lie - der die hol - de Braut ihm zu, Mil - -". The piano accompaniment provides a final harmonic resolution.

cres.

lio - - - - - nen Liebes - lie - der die

holde Braut ihm zu . Ich höre in leises

P *pp*

Kla - gen, so lie - bes - bang so seelenvoll,

cres. *p* *f*

crescendo.

was mag die Stim - me fra - gen, die in dem Wind ver -

dim.

dim.

P
scholl? Was mag die Stimme fragen, die
pp *cre.*

in dem Wind ver - scholl? Was mag die Stim - me
scendo. *f* *f*

fragen, wohl fra - gen, die in dem Wind ver -
dim. *P* *pp*

scholl? ?
dim. *pp*
FINE.

