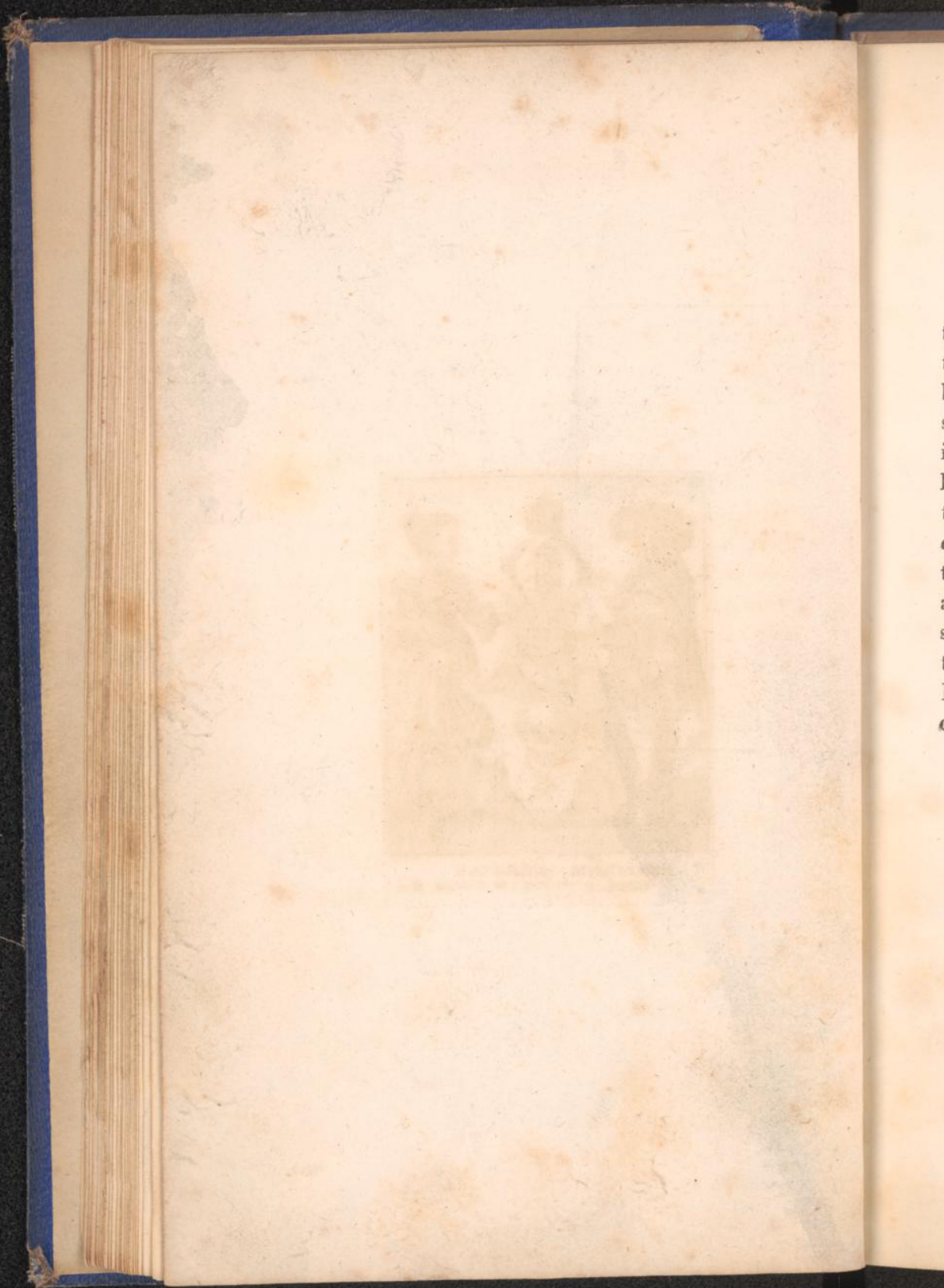




MORTALIVM NOBILITAS  
MEMORARE HUIUSMODI & IN AETERNUM NON

I





## PLATE I.—THE FRONTISPIECE.

It has been supposed by Papillon, without the least authority, or even probability, that the two figures represent the persons for whom Holbein painted this work. It has been already shewn that Holbein did not design this plate. It is altogether emblematical, and appears to be an heraldical representation of mortality, viz. a tattered shield, surmounted with a death's head; the crest, an hour-glass between two arms of a skeleton, holding part of a skull. The two figures are probably intended for supporters, and represent the dress of the Swiss Nobility of the sixteenth century. The "MORTALIVM NOBILITAS" was added by Hollar, and is a very concise and admirable explanation of the subject.

FRASCHE N.—LE PICHON.

Hollain a commandé ces scènes de la vie  
par celle qui eut tant d'influence sur toutes les  
autres. La Mère du genre humain, tient dans  
sa main droite, la pomme fatale qu'elle vient de  
recevoir du serpent à tête de jeune homme,  
Adam en cueille en même tems une autre, excitée  
par les sollicitations de la trop crédule Ève, qui  
lui montre celle qu'elle a reçue.