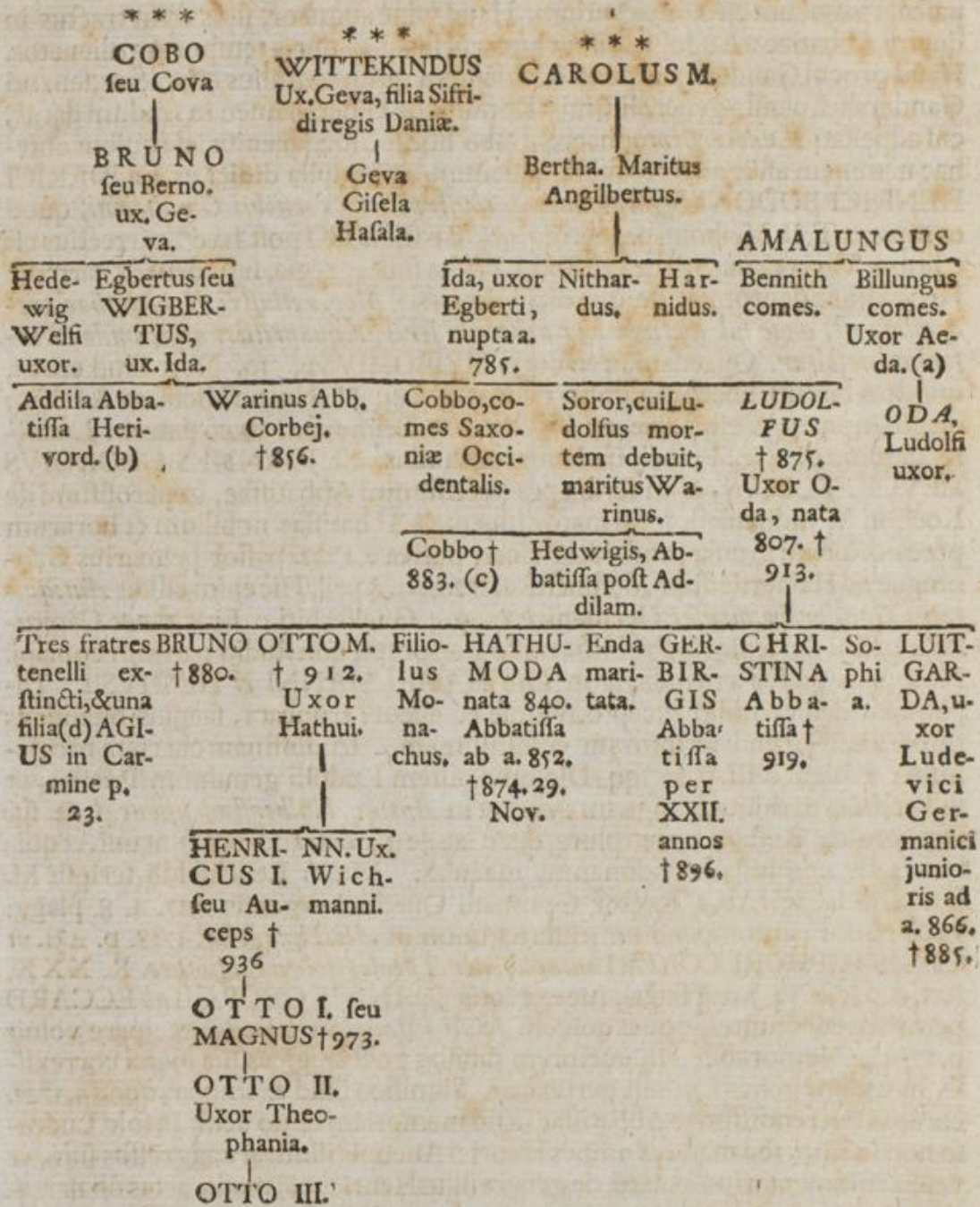
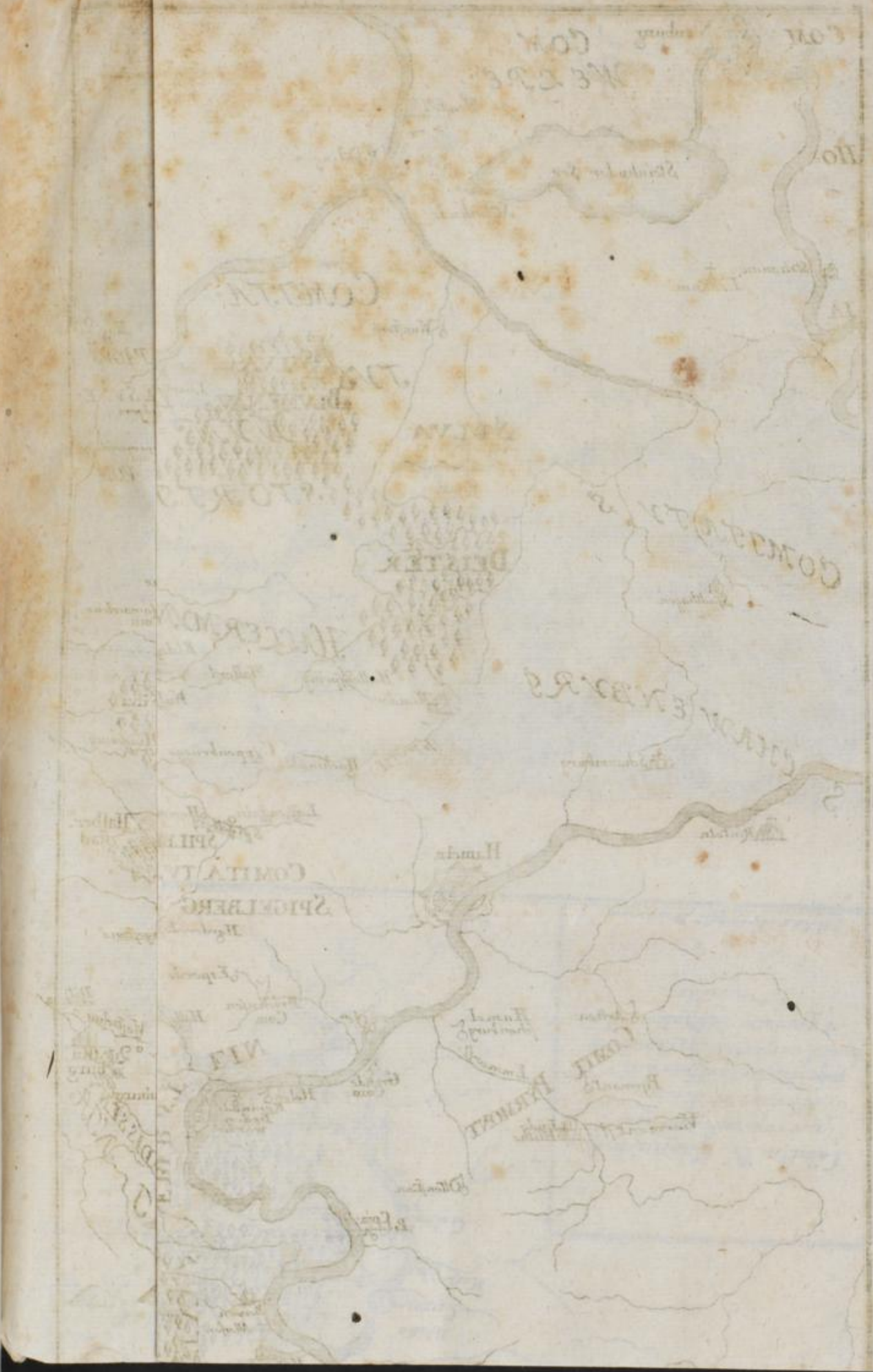


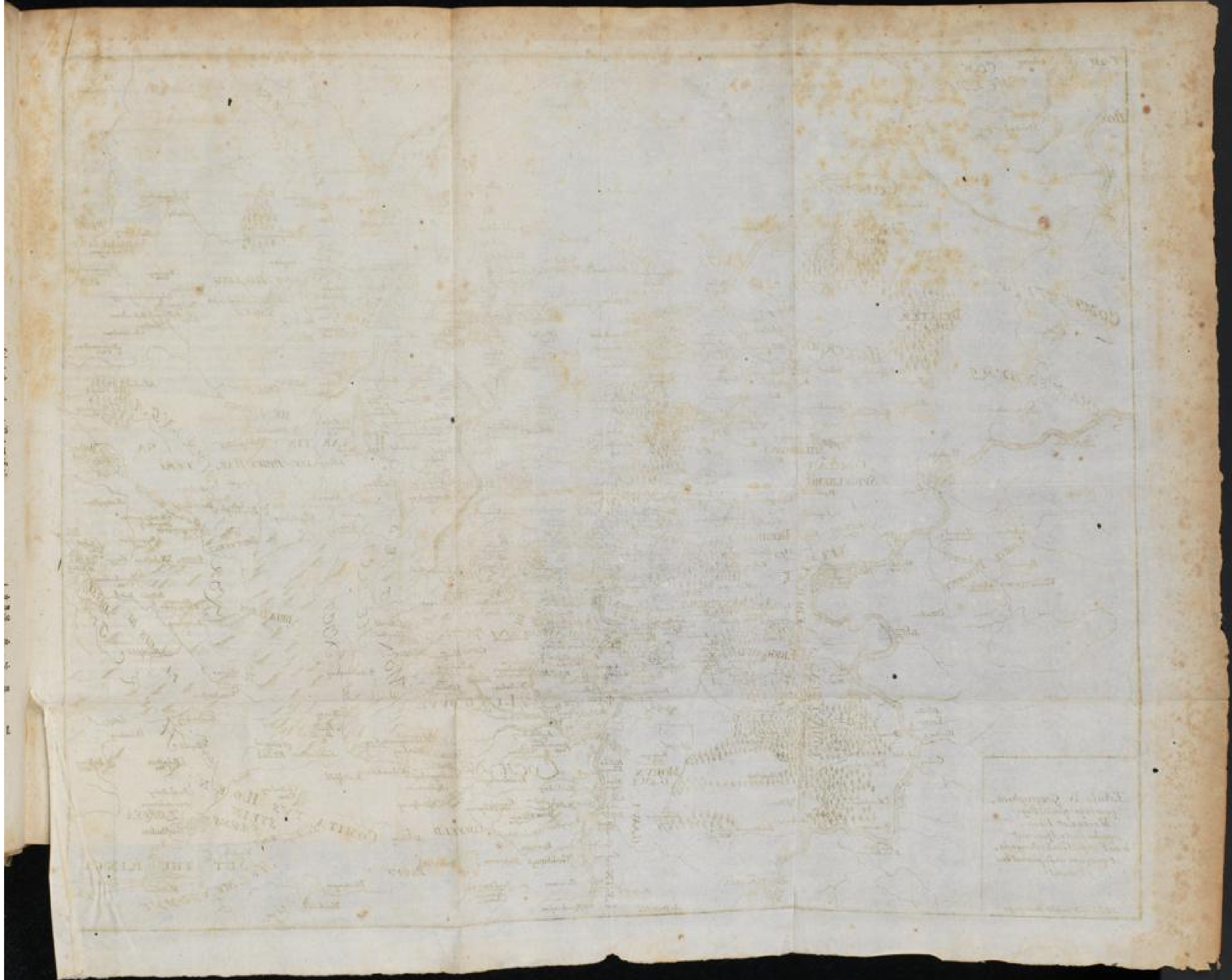
-102301-)o:(-101101-

STEMMA LUDOLFINUM.



- (a) BODO in Syntagm. p. 702. T. III. Leibnit. *Mavis Odae vocabulum, si non male characteribus fallor, PRODA fuit.* Subiicit in nota Leibnitius: *In Rorwitae carmine, quale habemus, legitur: ALDA.* Sed T. II. p. 319, legitur AEDA. Sic LEUCKFELDIUS quoque edidit. Nec aliter est in MSto.
- (b) Haec ex scriptore translationis S. Pufinnae T. I. Leibnit, p. 181. sqq. & Schatenio ac Erdmanno.
- (c) Confer Errata serius notata post Indicem generalem T. III. Leibnitii p. 245. Translatio Pufinnae §. 3. p. 182.
- (d) Quinque sorores coenobio mancipavit Ludolfus. Si igitur Luitgarda eis non interfuit, XIV. liberi Ludolfo sunt adtribuendi.





This is a map of
the
territory
of
the
State
of
Texas
as
it
was
in
1845
at
the
time
it
was
annexed
to
the
United
States
of
America
by
the
Treaty
of
1845
between
the
United
States
and
Spain
and
Mexico
and
the
Republic
of
Texas
at
the
time
it
was
annexed
to
the
United
States
of
America
by
the
Treaty
of
1845
between
the
United
States
and
Spain
and
Mexico
and
the
Republic
of
Texas