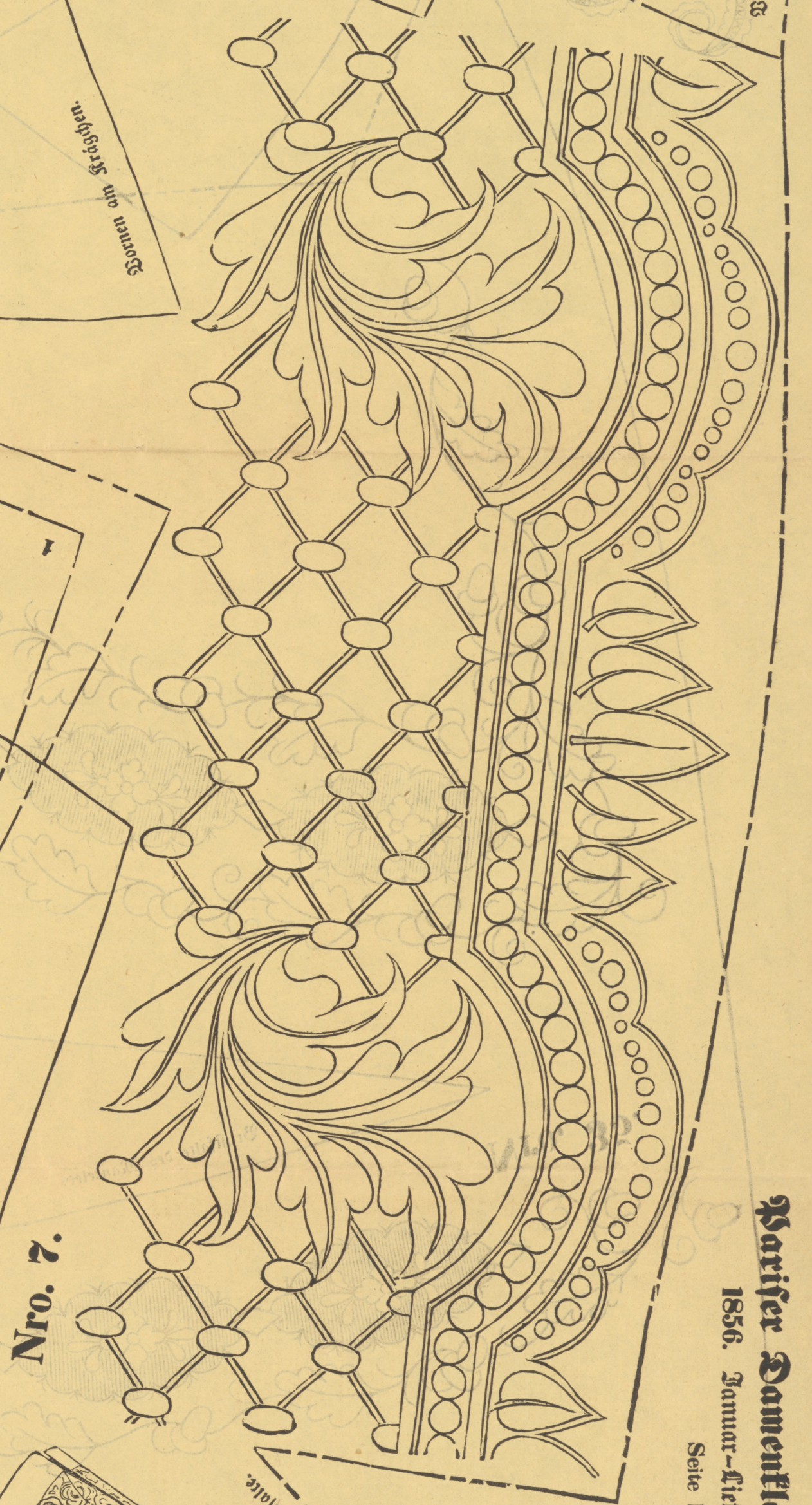
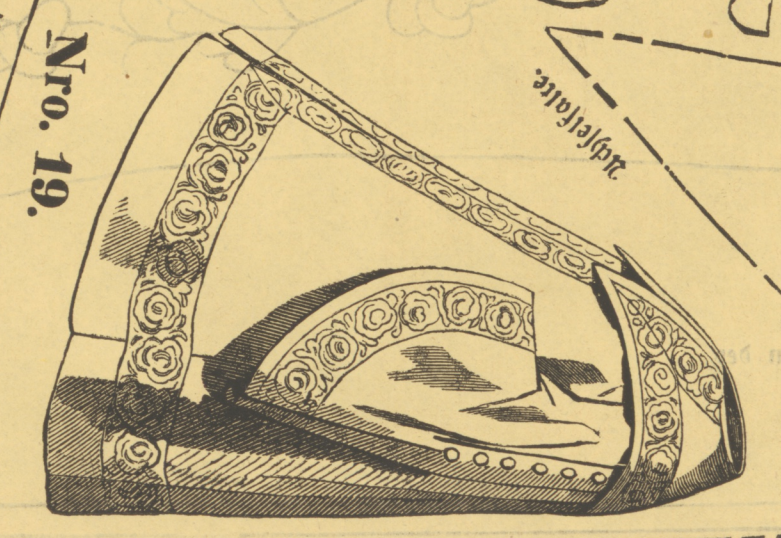


Nro. 20.

Nro. 3.
Ärmel ähnliches Theil zu einem Mantel für Damen.



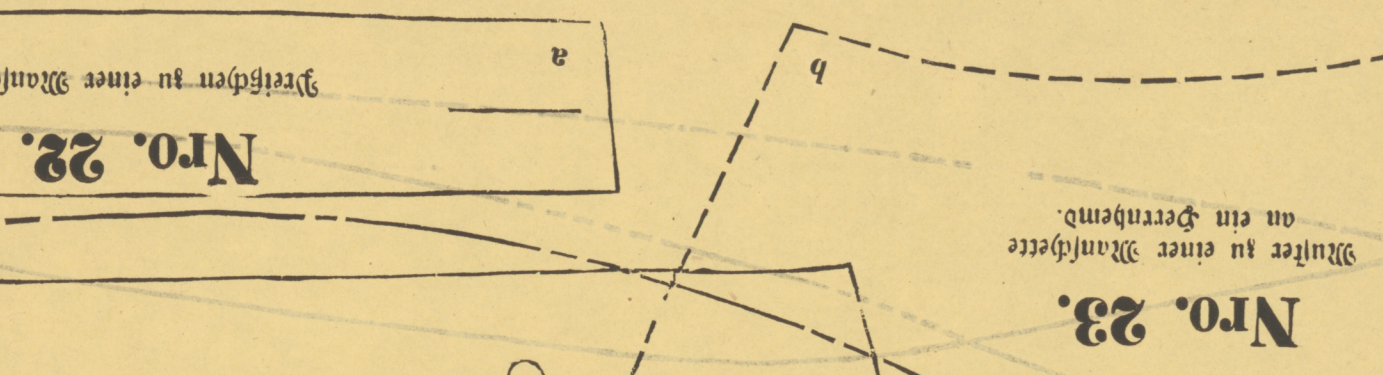
Nro. 7.



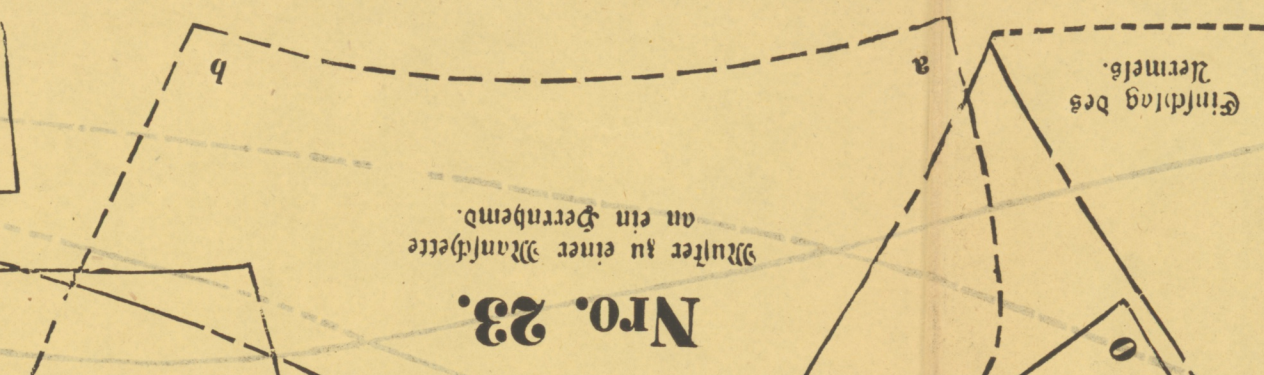
Nro. 19.

Nro. 28.
Ärmel des Mantels.

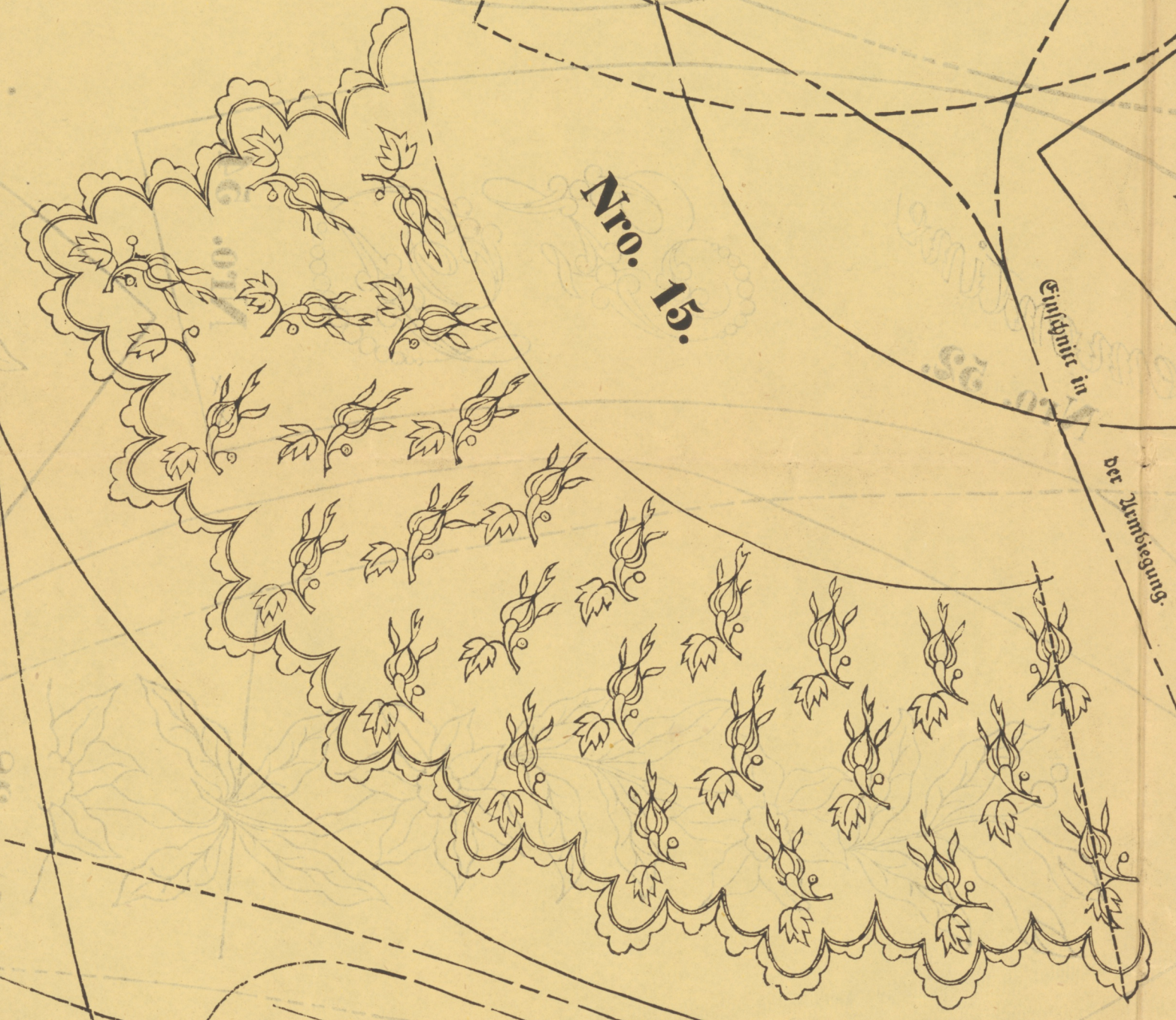
Nro. 19.
Ärmel des Mantels.



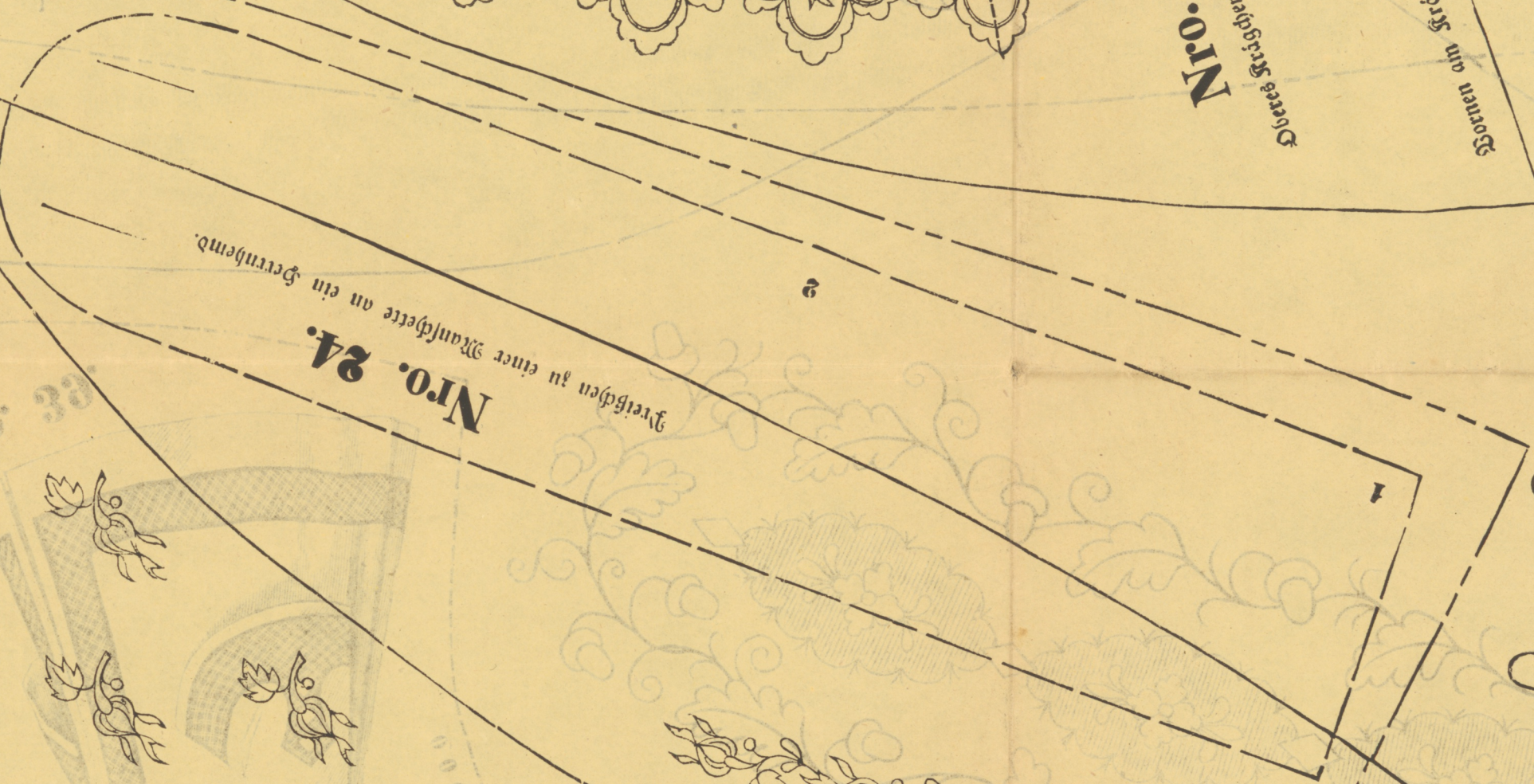
Nro. 22.



Nro. 23.



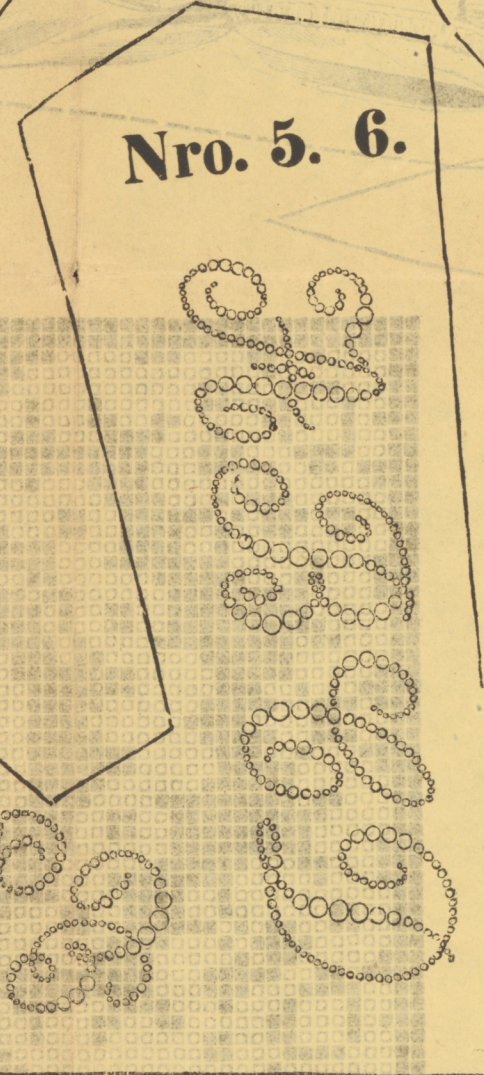
Nro. 15.



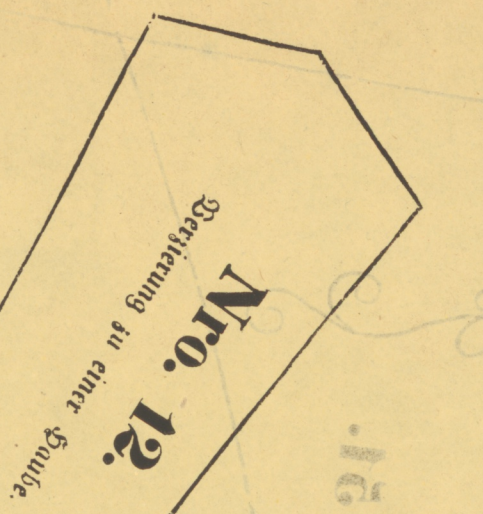
Nro. 24.



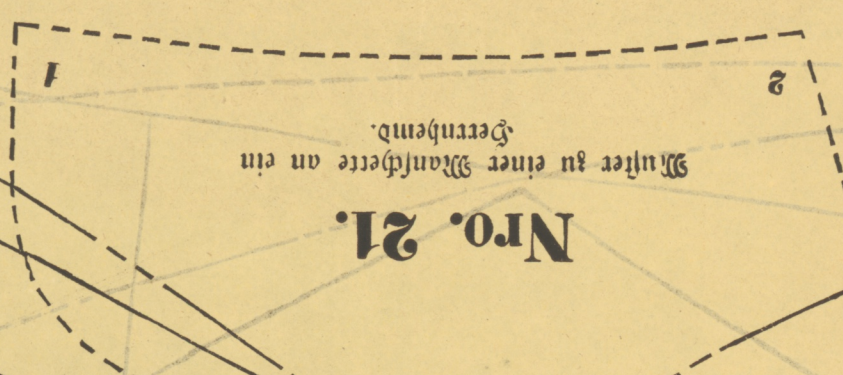
Nro. 13.



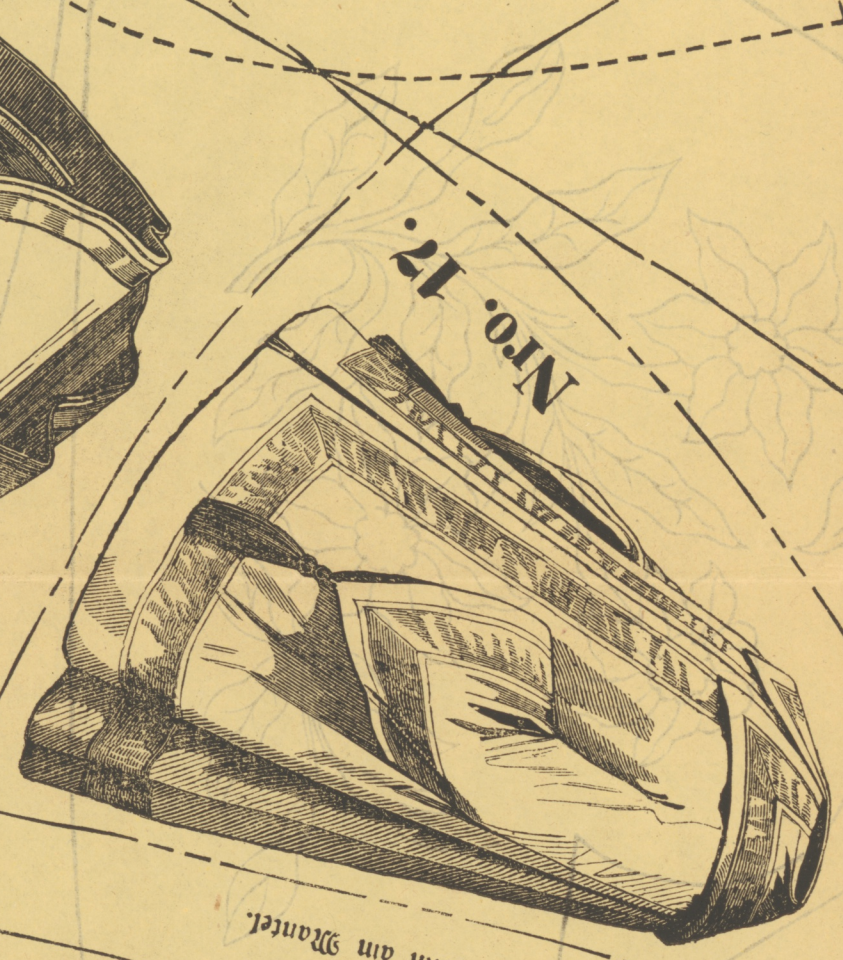
Nro. 5. 6.



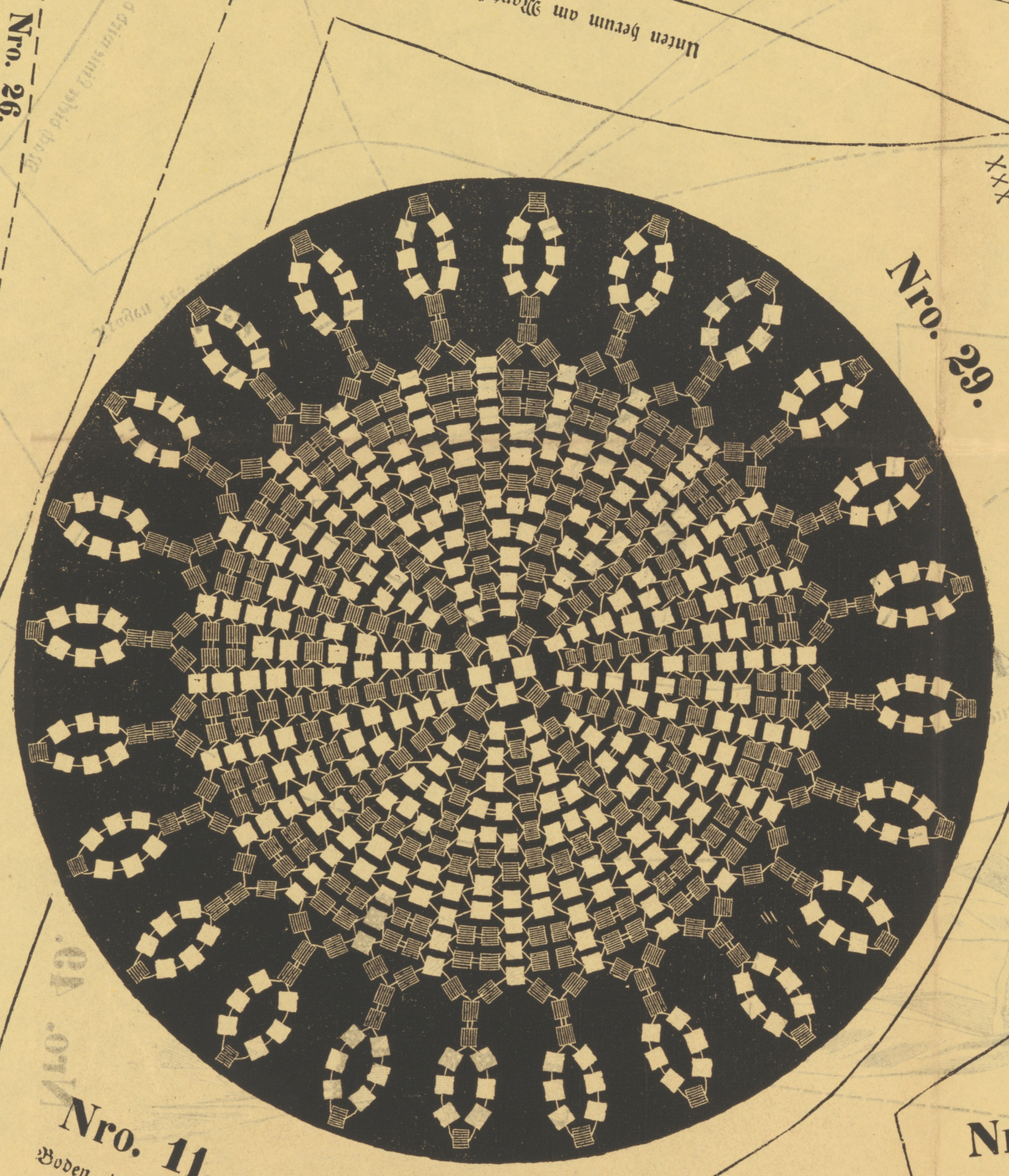
Nro. 12.



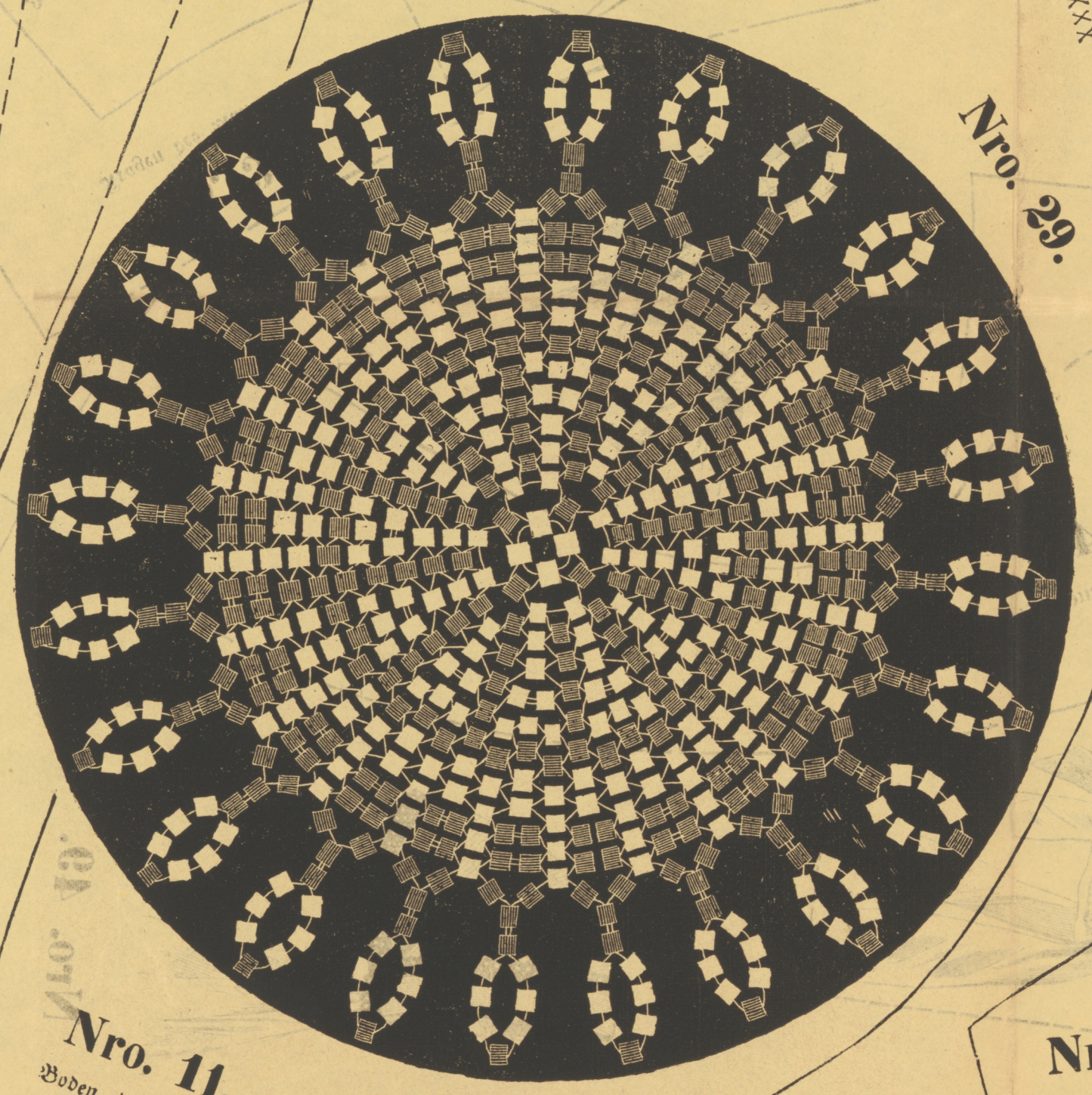
Nro. 21.



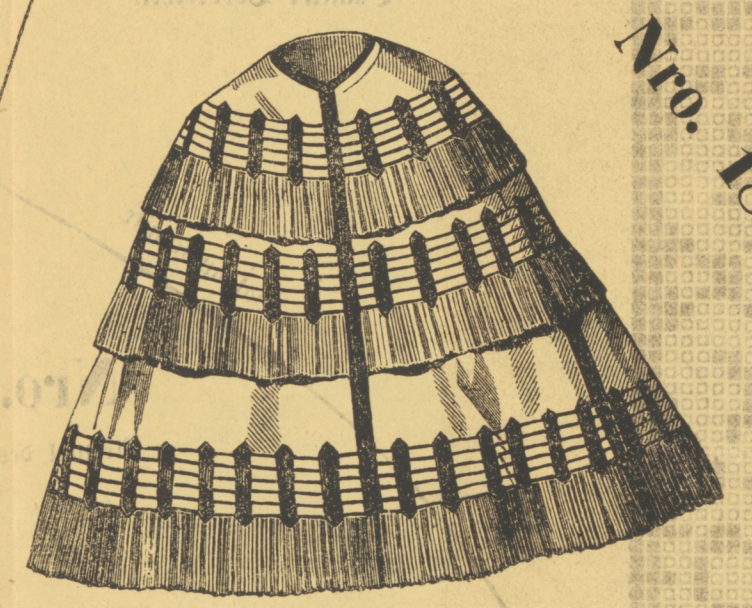
Nro. 17.



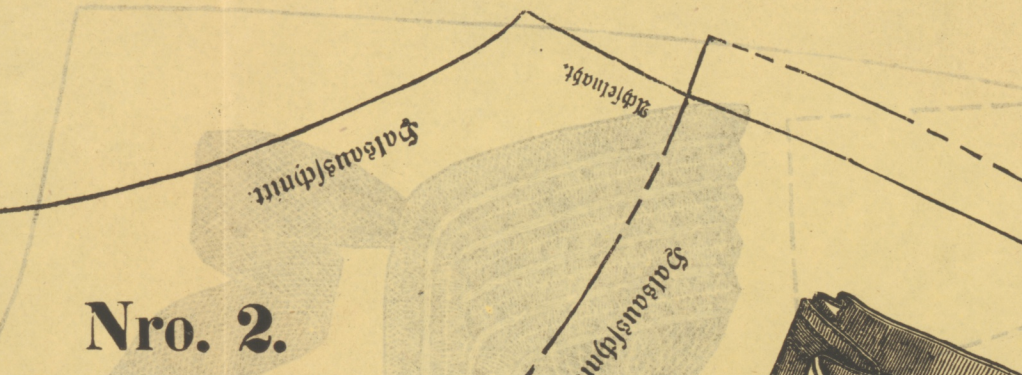
Nro. 29.



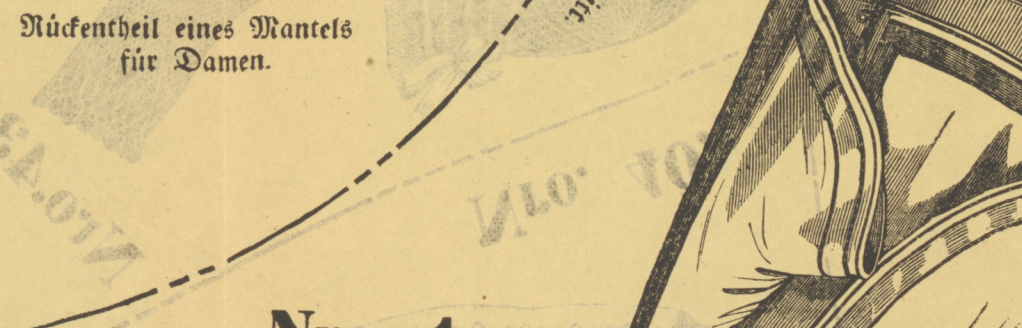
Nro. 11.



Nro. 18.



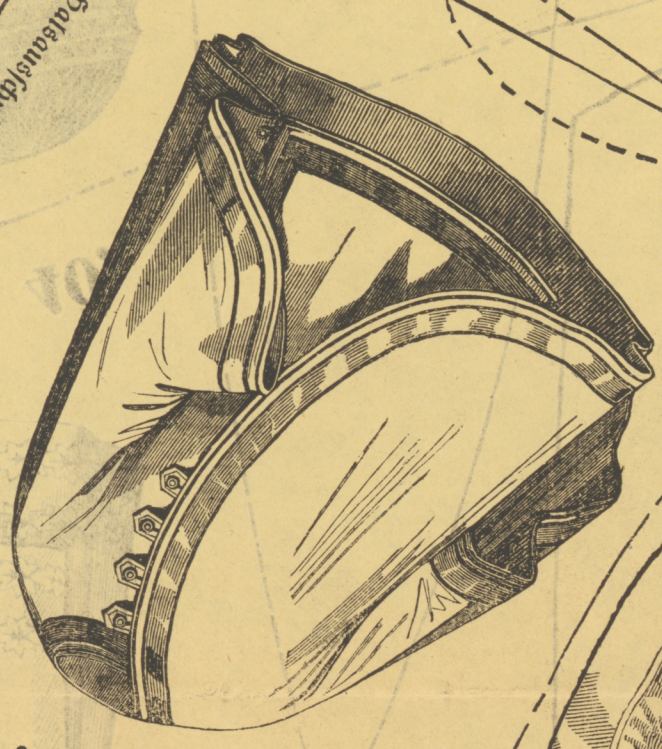
Nro. 2.



Nro. 1.



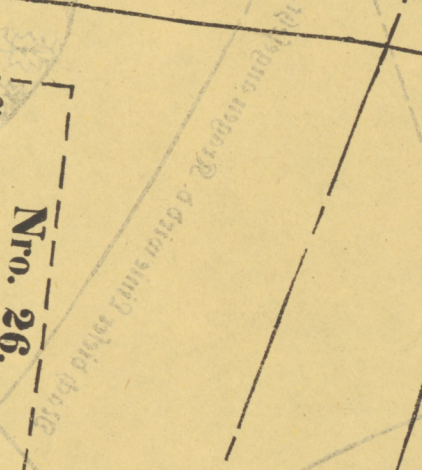
Nro. 10.



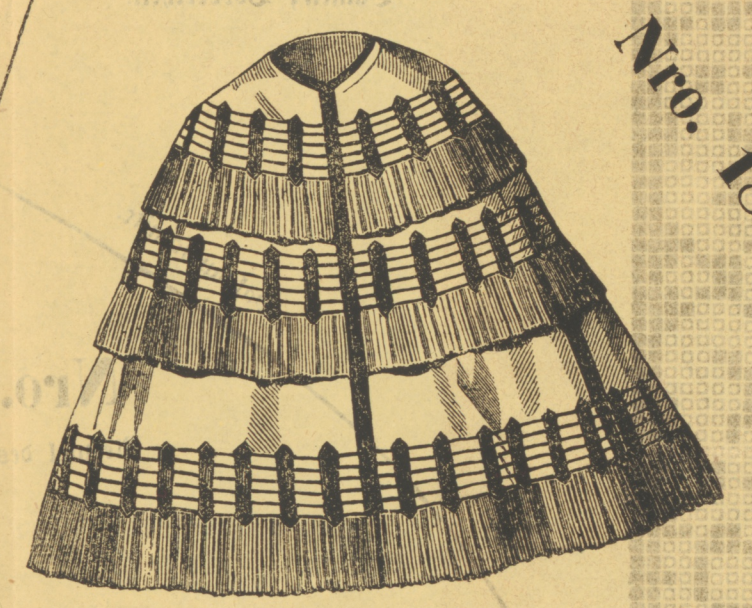
Nro. 16.



Nro. 8.



Nro. 26.



Nro. 18.

Einschlag in der Länge des Rückentheils des Mantels.

Einschlag in der Länge des Rückentheils des Mantels.

Bornen herunter an dem einen Ärmel ähnlichen Theil.

