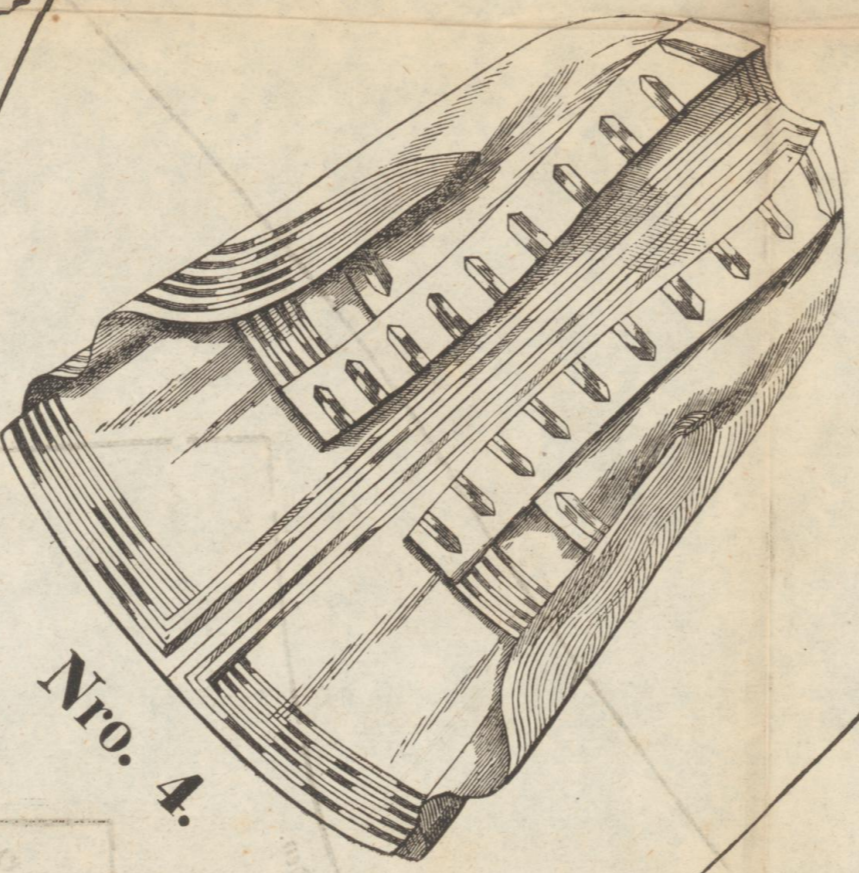
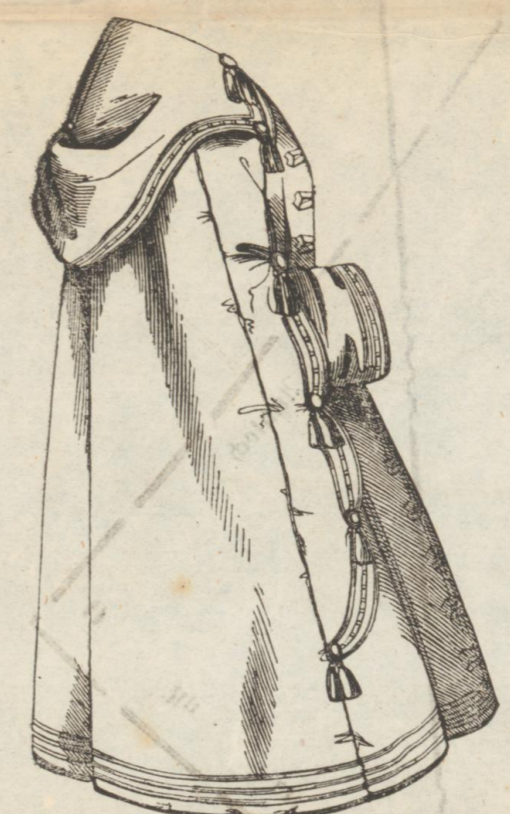


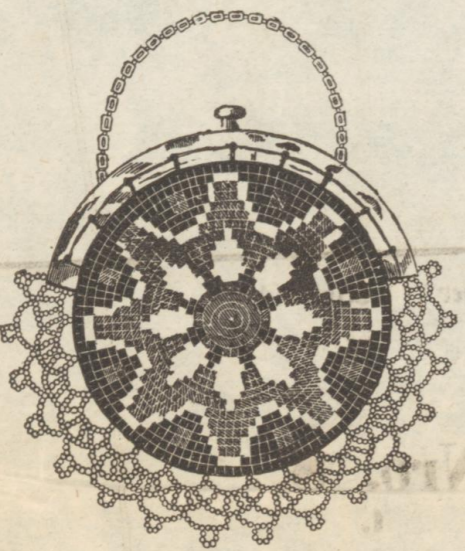
Nro. 2.



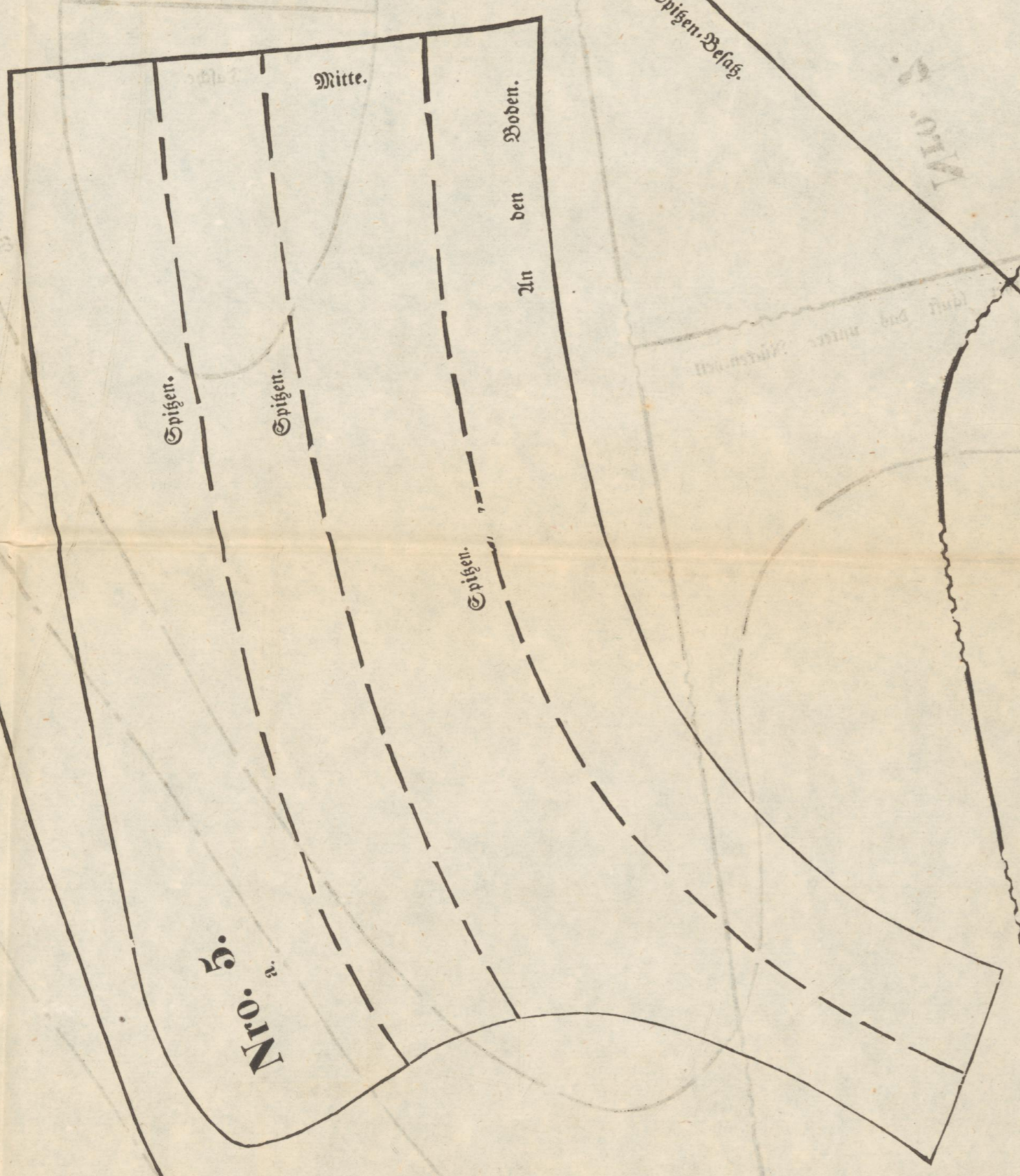
Nro. 4.



Nro. 10.



Nro. 11.



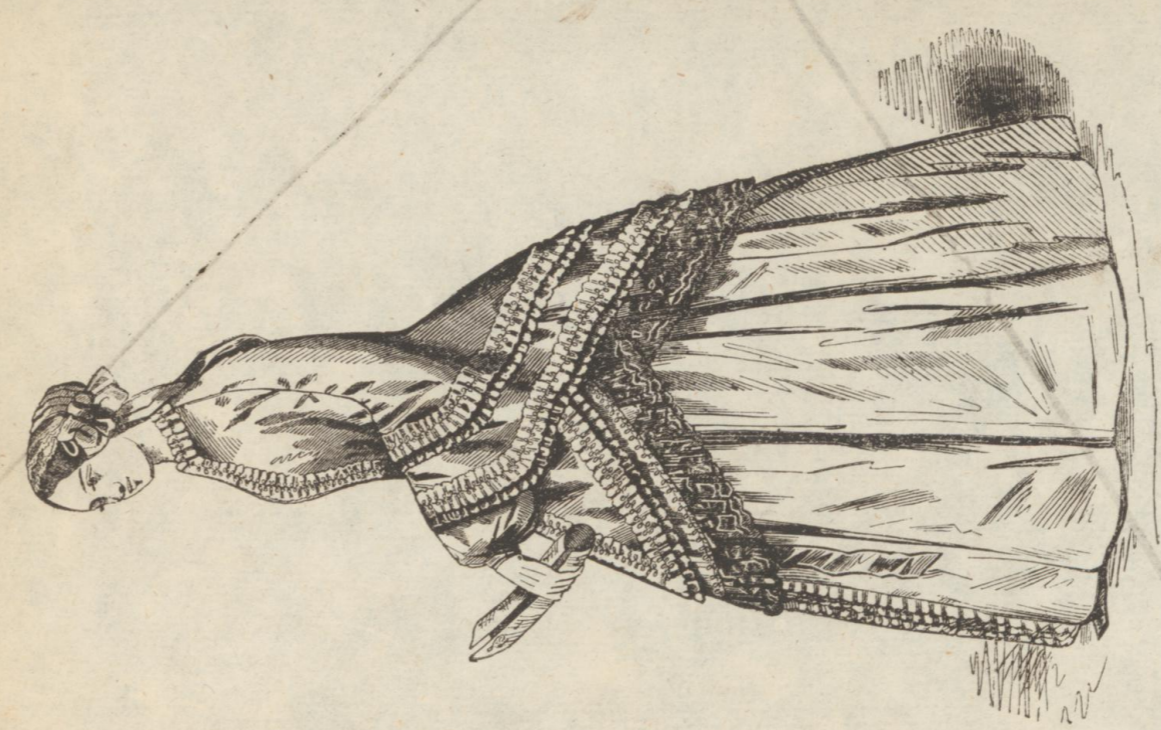
Nro. 5.



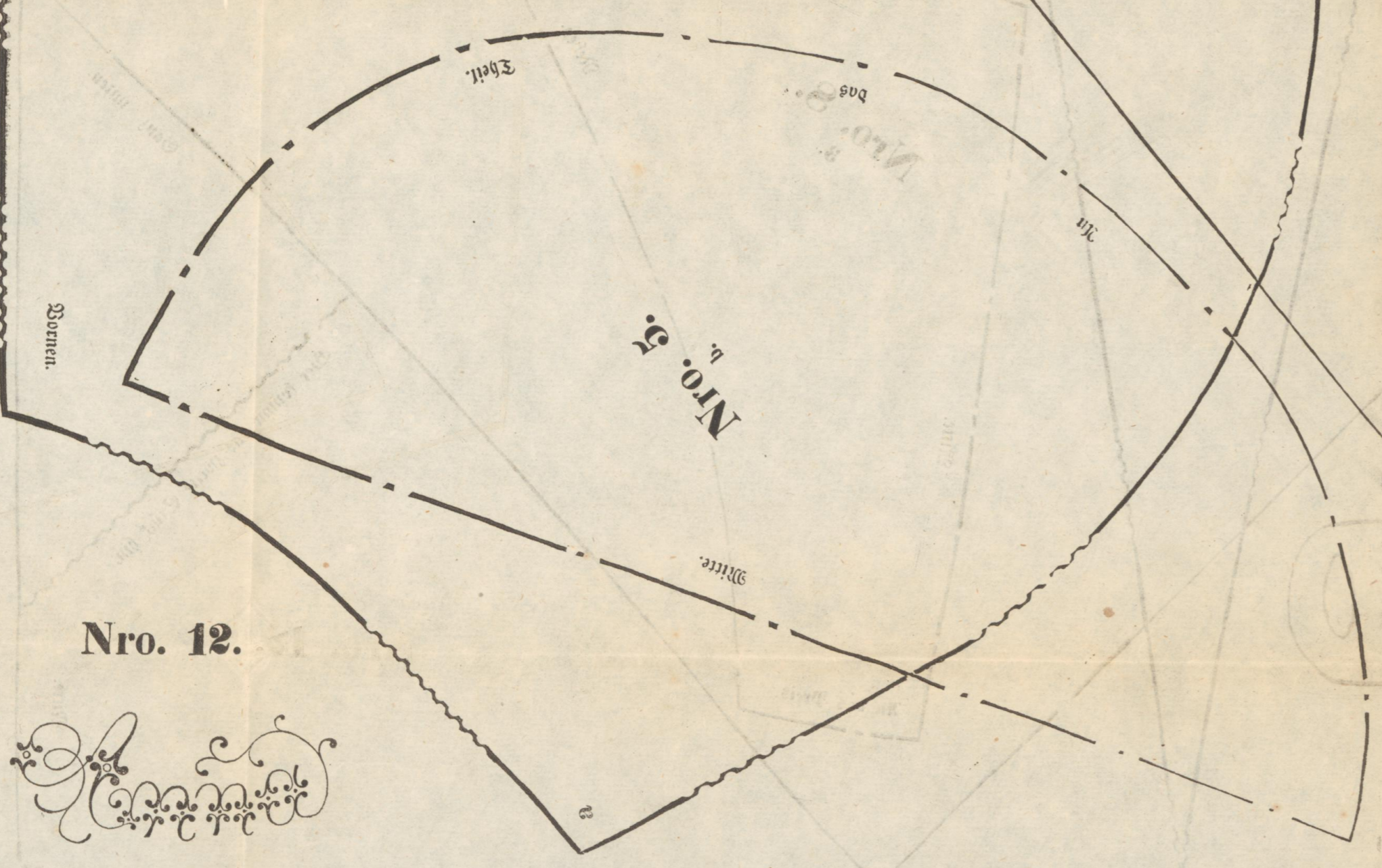
Nro. 6.



Nro. 3.



Nro. 13.

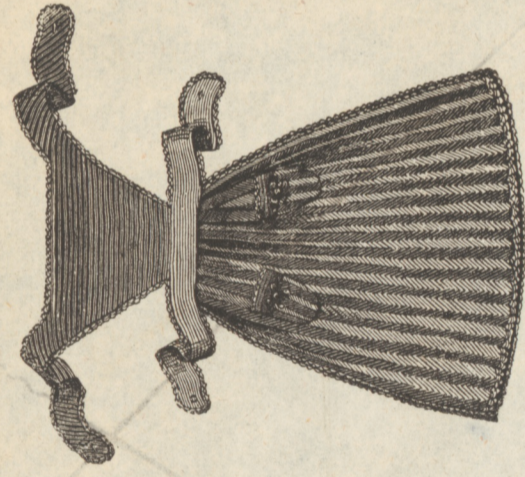
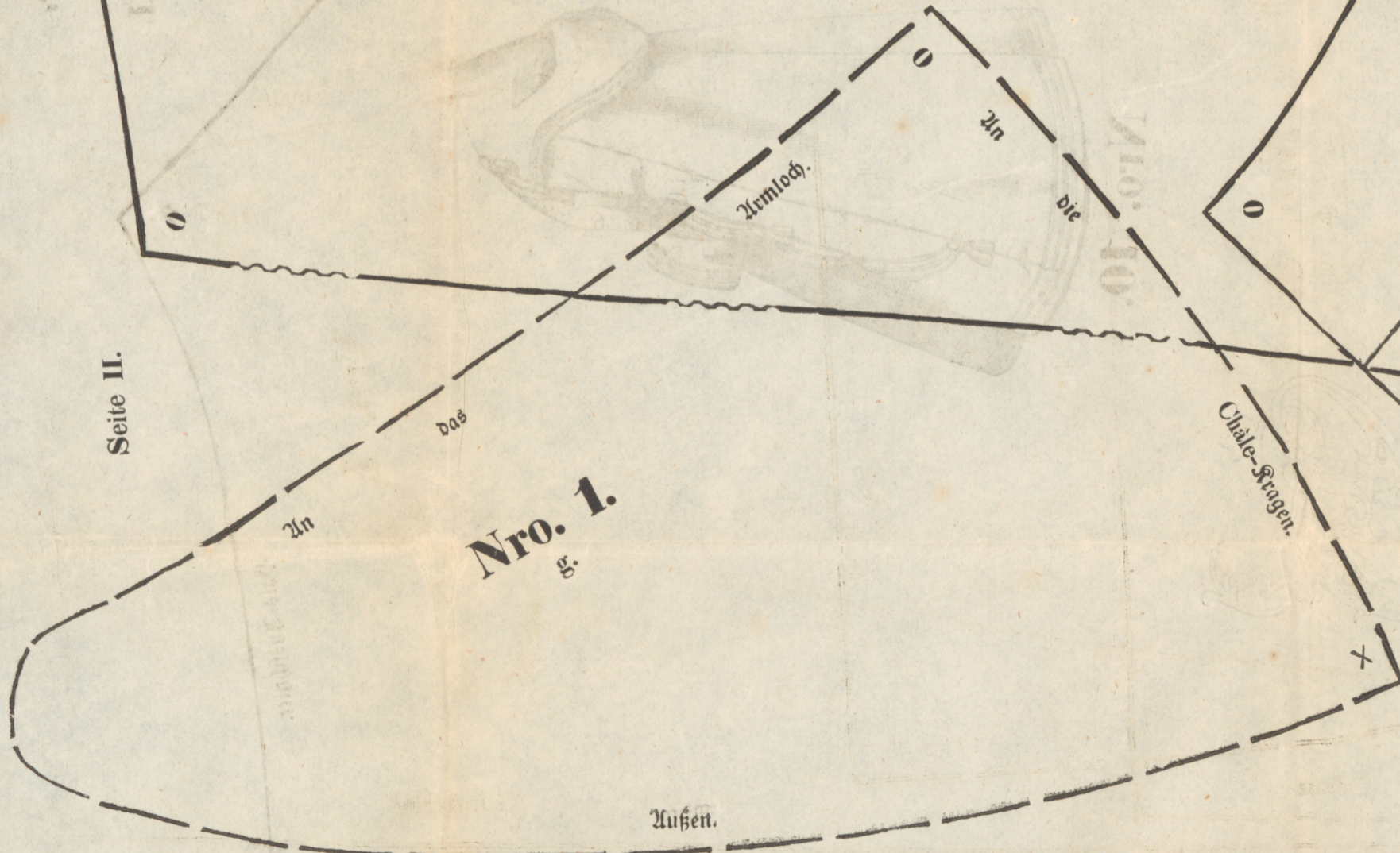


Nro. 12.



Seite II.

Nro. 1.
g.



Nro. 9.

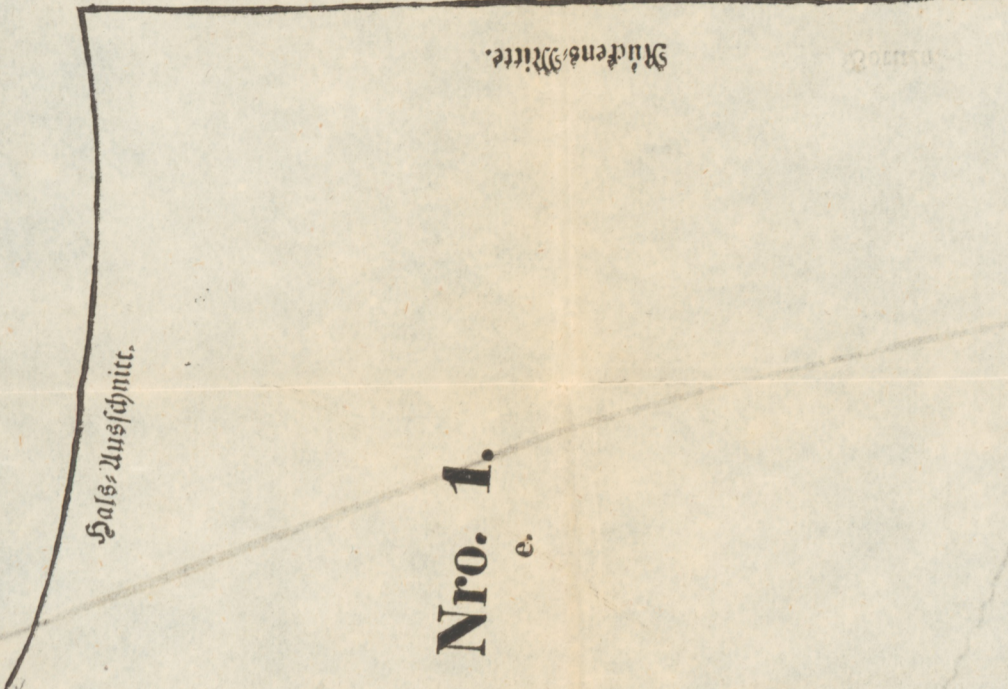
Armloch.

0 in die 0

Chale-Kragen.

Falte.

Nro. 1.
e.



Mitte des Schürze.

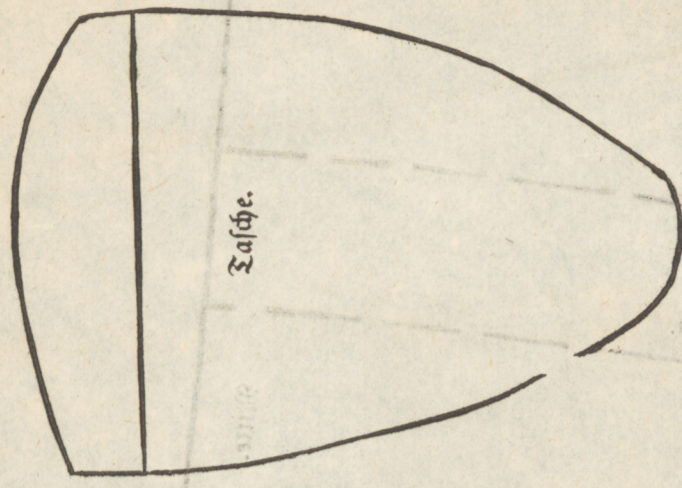
Nro. 8.
i.

an der Kinderföhre.

Ober.

Oben.

Mittens.



Nro. 2.

Bis hierher läuft das untere Mäntelteil.

Bis hierher läuft das Ende.

Außen an das Ende.

Nro. 1.
f.



Mäntelteil.

Oben unten am zweiten Chale-Kragen.



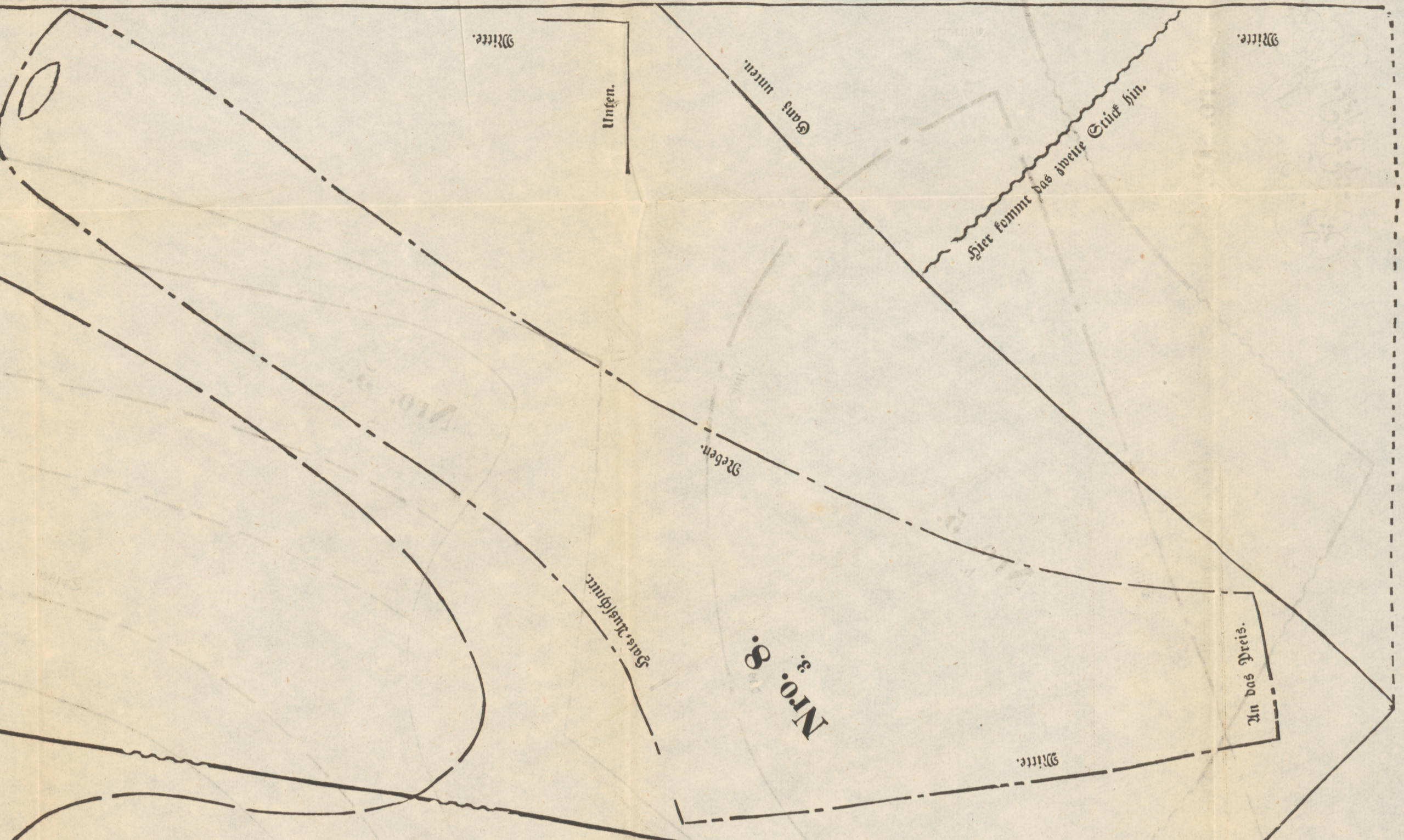
Nro. 8.
2.

Ober.

Bis hierher Schürze — dann fern.

Mitte.

Nro. 8.
3.



Sie kommt das ganze Ende hin.

Stechen.

Ganz unten.

Mittens.

An das Preis.