

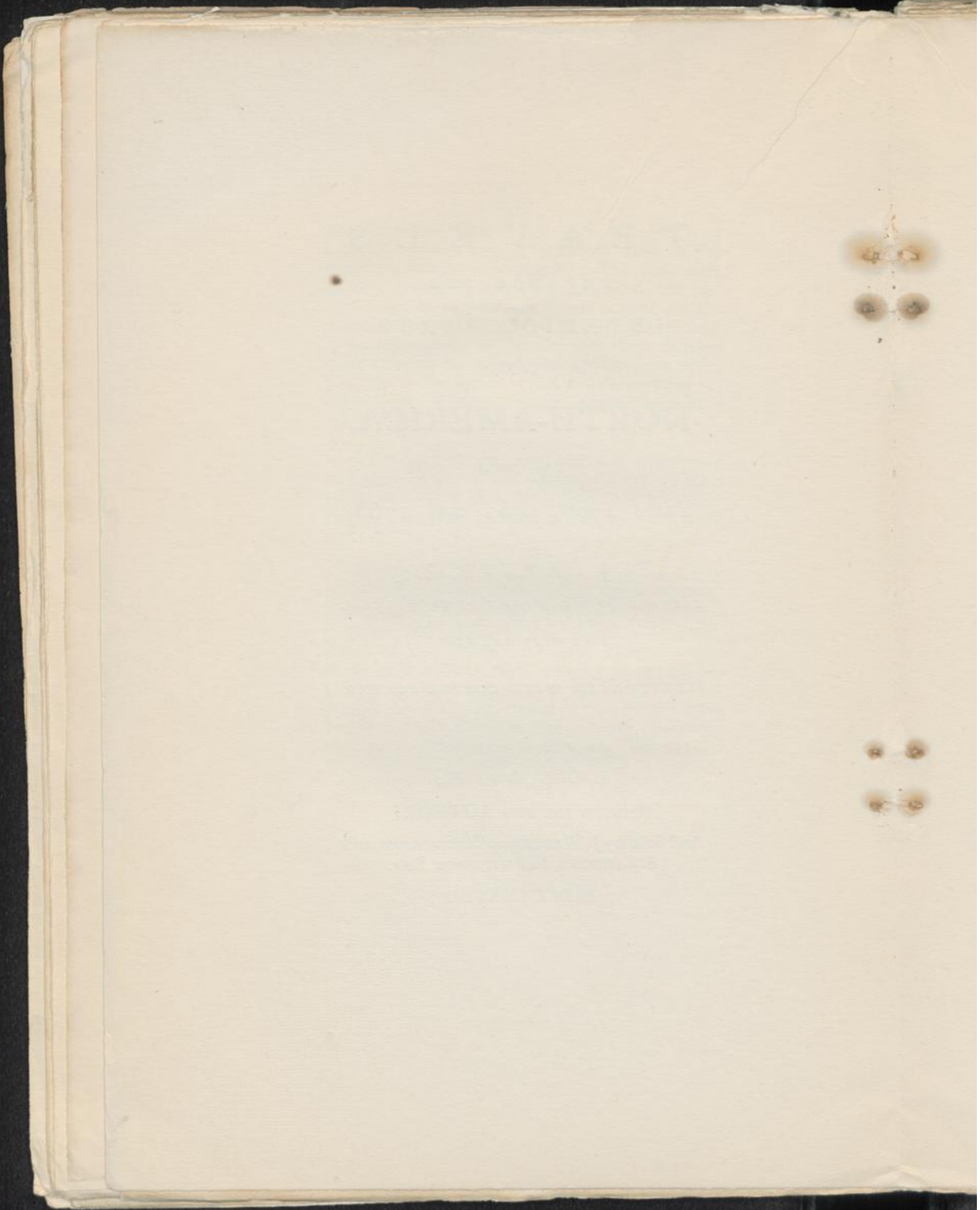
T R A V E L S
THROUGH THE
INTERIOR PARTS
OF
NORTH-AMERICA,
IN THE
YEARS 1766, 1767, and 1768.

BY J. CARVER, Esq.
CAPTAIN OF A COMPANY OF PROVINCIAL
TROOPS DURING THE LATE
WAR WITH FRANCE.

ILLUSTRATED WITH COPPER PLATES.

L O N D O N :
PRINTED FOR THE AUTHOR ;
And Sold by J. WALTER, at Charing-cross, and
S. CROWDER, in Pater-noster Row.

M D C C L X X V I I I .



T O

JOSEPH BANKS, Esq. F. R. S.

S I R,

WHEN the Public are informed that I have long had the Honour of your Acquaintance—that my Design in publishing the following Work has received your Sanction—that the Composition of it has stood the Test of your Judgment—and that it is by your Permission a Name so deservedly eminent in the Literary World is prefixed to it, I need not be apprehensive of its Success; as
your

D E D I C A T I O N .

your Patronage will unquestionably give them Assurance of its Merit.

For this public Testimony of your Favour, in which I pride myself, accept, Sir, my most grateful Acknowledgments; and believe me to be with great Respect,

Your obedient

humble Servant,

LONDON,
June 20, 1778,

J. CARVER.

[TRAVELS THROUGH THE INTERIOR PARTS
OF NORTH-AMERICA, IN THE YEARS
1766, 1767, AND 1768.]

CHAP. XIX.

Of the TREES, SHRUBS, ROOTS, HERBS,
FLOWERS, &c.

I SHALL here observe the same method that I have pursued in the preceding chapter, and having given a list of the trees, &c. which are natives of the interior parts of North America, particularize such only as differ from the produce of other countries, or being little known, have not been described.

OF TREES.

The Oak, the Pine Tree, the Maple,
the Ash, the Hemlock, the Bass or
White Wood, the Cedar, the Elm, the
Birch, the Fir, the Locust Tree, the
Poplar, the Wickopic or Suckwic, the
Spruce,

Spruce, the Hornbeam, and the Button Wood Tree.

The OAK. There are several sorts of oaks in these parts; the black, the white, the red, the yellow, the grey, the swamp oak, and the chesnut oak: the five former vary but little in their external appearance, the shape of the leaves, and the colour of the bark being so much alike, that they are scarcely distinguishable; but the body of the tree when sawed discovers the variation, which chiefly consists in the colour of the wood, they being all very hard and proper for building. The swamp oak differs materially from the others both in the shape of the leaf, which is smaller, and in the bark, which is smoother; and likewise as it grows only in a moist gravelly soil. It is esteemed the toughest of all woods, being so strong yet pliable, that it is often made use of instead of whalebone, and is equally serviceable. The chesnut oak also is greatly different from the others, particularly in the shape of the leaf, which much resembles that of the chesnut tree, and for this reason it is so denominated.

nominated. It is neither so strong as the former species, or so tough as the latter, but is of a nature proper to be split into rails for fences, in which state it will endure a considerable time.

The PINE TREE. That species of the pine tree peculiar to this part of the continent is the white, the quality of which I need not describe, as the timber of it is so well known under the name of deals. It grows here in great plenty, to an amazing height and size, and yields an excellent turpentine, though not in such quantities as those in the northern parts of Europe.

The MAPLE. Of this tree there are two sorts, the hard and the soft, both of which yield a luscious juice, from which the Indians by boiling make very good sugar. The sap of the former is much richer and sweeter than the latter, but the soft produces a greater quantity. The wood of the hard maple is very beautifully veined and curled, and when wrought into cabinets, tables, gunstocks, &c. is greatly valued. That of the soft sort differs in its texture, wanting the variegated grain of the hard; it also
grows

grows more strait and free from branches, and is more easily split. It likewise may be distinguished from the hard, as this grows in meadows and low-lands, that on the hills and up-lands. The leaves are shaped alike, but those of the soft maple are much the largest, and of a deeper green.

The ASH. There are several sorts of this tree in these parts, but that to which I shall confine my description, is the yellow ash, which is only found near the head branches of the Mississippi. This tree grows to an amazing height, and the body of it is so firm and sound, that the French traders who go into that country from Louisiana to purchase furs make of them periaguays. This they do by excavating them with fire, and when they are completed, convey in them the produce of their trade to New Orleans, where they find a good market both for their vessels and cargoes. The wood of this tree greatly resembles that of the common ash, but it might be distinguished from any other tree by its bark; the ross or outside bark being near eight inches thick, and indented with furrows more than six

I i inches

inches deep, which make those that are arrived to a great bulk appear uncommonly rough; and by this peculiarity they may be readily known. The rind or inside bark is of the same thickness as that of other trees, but its colour is a fine bright yellow; insomuch that if it is but slightly handled, it will leave a stain on the fingers, which cannot easily be washed away; and if in the spring you peel off the bark, and touch the sap, which then rises between that and the body of the tree, it will leave so deep a tincture that it will require three or four days to wear it off. Many useful qualities belonging to this tree I doubt not will be discovered in time, besides its proving a valuable acquisition to the dyer.

The HEMLOCK TREE grows in every part of America in a greater or less degree. It is an ever-green of a very large growth, and has leaves somewhat like that of the yew; it is however quite useless, and only an incumbrance to the ground, the wood being of a very coarse grain, and full of wind-shakes or cracks.

The

The BASS or WHITE WOOD is a tree of a middling size, and the whitest and softest wood that grows; when quite dry it swims on the water like a cork; in the settlements the turners make of it bowls, trenchers, and dishes, which wear smooth, and will last a long time; but when applied to any other purpose it is far from durable.

The WICKOPICK or SUCKWICK appears to be a species of the white wood, and is distinguished from it by a peculiar quality in the bark, which when pounded and moistened with a little water, instantly becomes a matter of the consistence and nature of size. With this the Indians pay their canoes, and it greatly exceeds pitch or any other material usually appropriated to that purpose; for besides its adhesive quality, it is of so oily a nature, that the water cannot penetrate through it, and its repelling power abates not for a considerable time.

The BUTTON WOOD is a tree of the largest size, and might be distinguished by its bark, which is quite smooth and prettily mottled. The wood is very proper for the use of cabinet-makers. It is

I i 2 covered

covered with small hard burs which spring from the branches, that appear not unlike buttons, and from these I believe it receives its name.

NUT TREES.

The Butter or Oilnut, the Walnut, the Hazlenut, the Beechnut, the Pecanut, the Chesnut, the Hickory.

The BUTTER or OILNUT. As no mention has been made by any authors of this nut, I shall be the more particular in my account of it. The tree grows in meadows, where the soil is rich and warm. The body of it seldom exceeds a yard in circumference, is full of branches, the twigs of which are short and blunt, and its leaves resemble those of the walnut. The nut has a shell like that fruit, which when ripe is more furrowed, and more easily cracked; it is also much longer and larger than a walnut, and contains a greater quantity of kernel, which is very oily, and of a rich agreeable flavour. I am persuaded that a much purer oil than that
of

of olives, might be extracted from this nut. The inside bark of this tree dyes a good purple; and it is said, varies in its shade, being either darker or lighter according to the month in which it is gathered.

The BEECH NUT. Though this tree grows exactly like that of the same name in Europe, yet it produces nuts equally as good as chesnuts; on which bears, martins, squirrels, partridges, turkies, and many other beasts and birds feed. The nut is contained, whilst growing, in an outside case like that of a chesnut, but not so prickly; and the coat of the inside shell is also smooth like that; only its form is nearly triangular. Vast quantities of them lie scattered about in the woods, and supply with food great numbers of the creatures just mentioned. The leaves, which are white, continue on the trees during the whole winter. A decoction made of them is a certain and expeditious cure for wounds which arise from burning or scalding, as well as a restorative for those members that are nipped by the frost.

The PECANNUT is somewhat of the walnut kind, but rather smaller than a

I i 3 walnut,

walnut, being about the size of a middling acorn, and of an oval form; the shell is easily cracked, and the kernel shaped like that of a walnut. This tree grows chiefly near the Illinois river.

The HICKORY is also of the walnut kind, and bears a fruit nearly like that tree. There are several sorts of them, which vary only in the colour of the wood. Being of a very tough nature, the wood is generally used for the handles of axes, &c. It is also very good fire wood, and as it burns an excellent sugar distills from it.

FRUIT TREES.

I need not to observe that these are all the spontaneous productions of nature, which have never received the advantages of ingrafting, transplanting, or manuring.

The crab apple-tree, the plum-tree, and the cherry-tree.

The CRAB APPLE-TREE bears a
fruit

fruit that is much larger and better flavoured than those of Europe.

The PLUM-TREE. There are two sorts of plums in this country, one a large sort of a purple cast on one side, and red on the reverse, the second totally green, and much smaller. Both these are of a good flavour, and are greatly esteemed by the Indians, whose taste is not refined, but who are satisfied with the productions of nature in their unimproved state.

The CHERRY-TREE. There are three sorts of cherries in this country, the black, the red, and the sand cherry; the two latter may with more propriety be ranked among the shrubs, as the bush that bears the sand cherries almost creeps along the ground, and the other rises not above eight or ten feet in height; however I shall give an account of them all in this place. The black cherries are about the size of a currant, and hang in clusters like grapes; the trees which bear them being very fruitful, they are generally loaded, but the fruit is not good to eat, however they give an agreeable flavour to brandy, and turn it to the colour of claret.

ret. The red cherries grow in the greatest profusion, and hang in bunches like the black sort just described; so that the bushes which bear them appear at a distance like solid bodies of red matter. Some people admire this fruit, but they partake of the nature and taste of alum, leaving a disagreeable roughness in the throat, and being very astringent. As I have already described the sand cherries, which greatly exceed the two other sorts both in flavor and size, I shall give no further description of them. The wood of the black cherry-tree is very useful, and works well into cabinet ware.

SHRUBS.

The Willow, Shin Wood, Shumack, Sassafras, the Prickly Ash, Moose Wood, Spoon Wood, Large Elder, Dwarf Elder, Poisonous Elder, Juniper, Shrub Oak, Sweet Fern, the Laurel, the Witch Hazel, the Myrtle, Winter Green, the Fever Bush, the Cranberry Bush, the Gooseberry Bush, the Currant Bush, the Whir-
tle

tle Berry, the Raspberry, the Black Berry, and the Choak Berry.

The WILLOW. There are several species of the willow, the most remarkable of which is a small sort that grows on the banks of the Mississippi, and some other places adjacent. The bark of this shrub supplies the beaver with its winter food; and where the water has washed the soil from its roots, they appear to consist of fibres interwoven together like thread, the colour of which is of an inexpressibly fine scarlet; with this the Indians tinge many of the ornamental parts of their dress.

SHIN WOOD. This extraordinary shrub grows in the forests, and rising like a vine, runs near the ground for six or eight feet, and then takes root again; in the same manner taking root, and springing up successively, one stalk covers a large space; this proves very troublesome to the hasty traveller, by striking against his shins, and entangling his legs; from which it has acquired its name.

The SASSAFRAS is a wood well known for its medicinal qualities. It
might

might with equal propriety be termed a tree as a shrub, as it sometimes grows thirty feet high; but in general it does not reach higher than those of the shrub kind. The leaves, which yield an agreeable fragrance, are large and nearly separated into three divisions. It bears a reddish brown berry of the size and shape of Pimento, and which is sometimes used in the colonies as a substitute for that spice. The bark or roots of this tree is infinitely superior to the wood for its use in medicine, and I am surprised it is so seldom to be met with, as its efficacy is so much greater.

The PRICKLY ASH is a shrub that sometimes grows to the height of ten or fifteen feet, and has a leaf exactly resembling that of an ash, but it receives the epithet to its name from the abundance of short thorns with which every branch is covered, and which renders it very troublesome to those who pass through the spot where they grow thick. It also bears a scarlet berry, which when ripe, has a fiery taste like pepper. The bark of this tree, particularly the bark of the roots, is highly esteemed by the natives for its medi-

medicinal qualities. I have already mentioned one instance of its efficacy, and there is no doubt but that the decoction of it will expeditiously and radically remove all impurities of the blood.

The MOOSE WOOD grows about four feet high, and is very full of branches; but what renders it worth notice is its bark, which is of so strong and pliable a texture, that being peeled off at any season, and twisted, makes equally as good cordage as hemp.

The SPOON WOOD is a species of the laurel, and the wood when sawed resembles box wood.

The ALDER or ELDER, termed the poisonous elder, nearly resembles the other sorts in its leaves and branches, but it grows much straiter, and is only found in swamps and moist soils. This shrub is endowed with a very extraordinary quality, that renders it poisonous to some constitutions, which it effects if the person only approaches within a few yards of it, whilst others may even chew the leaves or the rind without receiving the least detriment from them: the poison however is not mortal, though it operates
very

very violently on the infected person, whose body and head swell to an amazing size, and are covered with eruptions, that at their height resemble the confluent small-pox. As it grows also in many of the provinces, the inhabitants cure its venom by drinking saffron tea, and anointing the external parts with a mixture composed of cream and marsh mallows.

The SHRUB OAK is exactly similar to the oak tree, both in its wood and leaves, and like that it bears an acorn, but it never rises from the ground above four or five feet, growing crooked and knotty. It is found chiefly on a dry gravelly soil.

The WITCH HAZLE grows very bushy, about ten feet high, and is covered early in May with numerous white blossoms. When this shrub is in bloom, the Indians esteem it a further indication that the frost is entirely gone, and that they might sow their corn. It has been said, that it is possessed of the power of attracting gold or silver, and that twigs of it are made use of to discover where the veins of these metals lie hid; but I am apprehensive that this is only a fallacious

cious story, and not to be depended on; however that supposition has given it the name of witch hazle.

The MYRTLE is a shrub about four or five feet high, the leaves of which are larger than those of the common myrtle, but they smell exactly alike. It bears small berries, which are generally called Bay Berries, and these are full of a gluey substance, which being boiled in water, swims on the surface of it, and becomes a kind of green wax; this is not so valuable as bees-wax, being of a more brittle nature, but mixed with it makes a good candle, which as it burns sends forth an agreeable scent.

WINTER GREEN. This is an ever-green of the species of the myrtle, and is found on dry heaths; the flowers of it are white, and in the form of a rose, but not larger than a silver penny; in the winter it is full of red berries about the size of a sloe, which are smooth and round; these are preserved during the severe season by the snow, and are at that time in the highest perfection. The Indians eat these berries, esteeming them very balsamic, and invigorating to the stomach.

stomach. The people inhabiting the interior colonies steep both the sprigs and berries in beer, and use it as a diet-drink for cleansing the blood from scorbutick disorders.

The FEVER BUSH grows about five or six feet high; its leaf is like that of a lilach, and it bears a reddish berry of a spicy flavour. The stalks of it are excessively brittle. A decoction of the buds or wood is an excellent febrifuge, and from this valuable property it receives its name. It is an ancient Indian remedy for all inflammatory complaints, and likewise much esteemed on the same account by the inhabitants of the interior parts of the colonies.

The CRANBERRY BUSH. Though the fruit of this bush greatly resembles in size and appearance that of the common sort, which grows on a small vine in morasses and bogs, yet the bush runs to the height of ten or twelve feet; but it is very rarely to be met with. As the meadow cranberry, being of a local growth, and flourishing only in morasses, cannot be transplanted or cultivated, the former, if removed at a proper season, would

would be a valuable acquisition to the garden, and with proper nurture prove equally as good, if not better.

The CHOAK BERRY. The shrub thus termed by the natives grows about five or six feet high, and bears a berry about the size of a sloe, of a jet black, which contains several small seeds within the pulp. The juice of this fruit, though not of a disagreeable flavour, is extremely tart, and leaves a roughness in the mouth and throat when eaten, that has gained it the name of choak berry.

ROOTS and PLANTS.

Elecampane, Spikenard, Angelica, Sarsaparilla, Ginseng, Ground Nuts, Wild Potatoes, Liquorice, Snake Root, Gold Thread, Solomon's Seal, Devil's Bit, Blood Root, Onions, Garlick, Wild Parsnips, Mandrakes, Hellebore White and Black.

SPIKENARD, vulgarly called in the colonies Petty-Morrell. This plant appears to be exactly the same as the Asia-tick

tick spikenard, so much valued by the ancients. It grows near the sides of brooks in rocky places, and its stem, which is about the size of a goose quill, springs up like that of angelica, reaching about a foot and a half from the ground. It bears bunches of berries in all respects like those of the elder, only rather larger. These are of such a balsamic nature, that when infused in spirits, they make a most palatable and reviving cordial.

SARSAPARILLA. The root of this plant, which is the most estimable part of it, is about the size of a goose quill, and runs in different directions, twined and crooked, to a great length in the ground; from the principal stem of it springs many smaller fibres, all of which are tough and flexible. From the root immediately shoots a stalk about a foot and half long which at the top branches into three stems; each of these has three leaves, much of the shape and size of a walnut leaf; and from the fork of each of the three stems grows a bunch of bluish white flowers, resembling those of the spikenard. The bark of the roots, which alone should be used in medicine, is of a bitterish flavour,

vour, but aromatic. It is deservedly esteemed for its medicinal virtues, being a gentle sudorific, and very powerful in attenuating the blood when impeded by gross humours.

GINSANG is a root that was once supposed to grow only in Korea, from whence it was usually exported to Japan, and by that means found its way to Europe; but it has lately been discovered to be also a native of North America, where it grows to as great perfection and is equally valuable. Its root is like a small carrot; but not so taper at the end; it is sometimes divided into two or more branches, in all other respects it resembles sarsaparilla in its growth. The taste of the root is bitterish. In the eastern parts of Asia it bears a great price, being there considered as a panacea, and is the last refuge of the inhabitants in all disorders. When chewed it certainly is a great strengthener of the stomach.

GOLD THREAD. This is a plant of the small vine kind, which grows in swampy places, and lies on the ground. The roots spread themselves just under the surface of the morass, and are easily

K k drawn

drawn up by handfuls. They resemble a large entangled skain of thread of a fine bright gold colour; and I am persuaded would yield a beautiful and permanent yellow dye. It is also greatly esteemed both by the Indians and colonists as a remedy for any soreness in the mouth, but the taste of it is exquisitely bitter.

SOLOMON'S SEAL is a plant that grows on the sides of rivers, and in rich meadow land. It rises in the whole to about three feet high, the stalks being two feet, when the leaves begin to spread themselves and reach a foot further. Every fibre of the root has an impression upon it about the size of a sixpence, which appears as if it was made by a seal, and from these it receives its name. It is greatly valued on account of its being a fine purifier of the blood.

DEVIL'S BIT is another wild plant, which grows in the fields and receives its name from a print that seems to be made by teeth in the roots. The Indians say that this was once an universal remedy for every disorder that human nature is incident to; but some of the evil
spirits

spirits envying mankind the possession of so efficacious a medicine gave the root a bite, which deprived it of a great part of its virtue.

BLOOD ROOT. A sort of plantain that springs out of the ground in six or seven long rough leaves, the veins of which are red; the root of it is like a small carrot both in colour and appearance; when broken, the inside of it is of a deeper colour than the outside, and distils several drops of juice that look like blood. This is a strong emetic, but a very dangerous one.

HERBS.

Balm, Nettles, Cinque Foil, Eye-bright, Sanicle, Plantain, Rattle Snake Plantain, Poor Robin's Plantain, Toad Plantain, Maiden Hair, Wild Dock, Rock Liverwort, Noble Liverwort, Bloodwort, Wild Beans, Ground Ivy, Water Cresses, Yarrow, May Weed, Gargit, Skunk Cabbage or Poke, Wake Robin, Betony, Scabious, Mullen, Wild Pease, Mouse Ear, Wild Indigo, and Cat Mint.

K k 2

SANICLE

SANICLE has a root which is thick towards the upper part, and full of small fibres below; the leaves of it are broad, roundish, hard, smooth, and of a fine shining green; a stalk rises from these to the height of a foot, which is quite smooth and free from knots, and on the top of it are several small flowers of a reddish white, shaped like a wild rose. A tea made of the root is vulnerary and balsamick.

RATTLE SNAKE PLANTAIN.
This useful herb is of the plaintain kind, and its leaves, which spread themselves on the ground, are about one inch and half wide, and five inches long; from the centre of these arises a small stalk nearly six inches long, which bears a little white flower; the root is about the size of a goose quill, and much bent and divided into several branches. The leaves of this herb are more efficacious than any other part of it for the bite of the reptile from which it receives its name; and being chewed and applied immediately to the wound, and some of the juice swallowed, seldom fails of averting every dangerous symptom. So convinced are the Indians
of

of the power of this infallible antidote, that for a trifling bribe of spirituous liquor, they will at any time permit a rattle snake to drive his fangs into their flesh. It is to be remarked that during those months in which the bite of these creatures is most venomous, that this remedy for it is in its greatest perfection, and most luxuriant in its growth.

POOR ROBIN'S PLANTAIN is of the same species as the last, but more diminutive in every respect; it receives its name from its size, and the poor land on which it grows. It is a good medicinal herb, and often administered with success in fevers and internal weakness.

TOAD PLANTAIN resembles the common plantain, only it grows much ranker, and is thus denominated because toads love to harbour under it.

ROCK LIVERWORT is a sort of liverwort that grows on rocks, and is of the nature of kelp or moss. It is esteemed as an excellent remedy against declines.

GARGIT or SKOKE is a large kind of weed, the leaves of which are about six inches long, and two inches and half broad; they resemble those of spinage in

K k 3 their

their colour and texture, but not in shape. Their root is very large, from which spring different stalks that run eight or ten feet high, and are full of red berries; these hang in clusters in the month of September, and are generally called pigeon berries, as those birds then feed on them. When the leaves first spring from the ground, after being boiled, they are a nutritious and wholesome vegetable, but when they are grown nearly to their full size, they acquire a poisonous quality. The roots applied to the hands and feet of a person afflicted with a fever, prove a very powerful absorbent.

SKUNK CABBAGE or POKE is an herb that grows in moist and swampy places. The leaves of it are about a foot long, and six inches broad, nearly oval, but rather pointed. The roots are composed of great numbers of fibres, a lotion of which is made use of by the people in the colonies for the cure of the itch. There issues a strong musky smell from this herb, something like the animal of the same name before described, and on that account it is so termed.

WAKE

WAKE ROBIN is an herb that grows in swampy lands; its root resembles a small turnip, and if tasted will greatly inflame the tongue, and immediately convert it from its natural shape, into a round hard substance; in which state it will continue for some time, and during this no other part of the mouth will be affected. But when dried, it loses its astringent quality, and becomes beneficial to mankind, for if grated into cold water, and taken internally, it is very good for all complaints of the bowels.

WILD INDIGO is an herb of the same species as that from whence Indigo is made in the southern colonies. It grows in one stalk to the height of five or six inches from the ground, when it divides into many branches, from which issue a great number of small hard bluish leaves, that spread to a great breadth, and among these it bears a yellow flower; the juice of it has a very disagreeable scent.

CAT MINT has a woody root, divided into several branches, and it sends forth a stalk about three feet high; the leaves are like those of the nettle or betony, and they have a strong smell of

K k 4 mint,

mint, with a biting acrid taste; the flowers grow on the tops of the branches, and are of a faint purple or whitish colour. It is called cat mint, because it is said, that cats have an antipathy to it, and will not let it grow. It has nearly the virtues of common mint.

FLOWERS.

Heart's Ease, Lilies red and yellow, Pond Lilies, Cowslips, May Flowers, Jessamine, Honeysuckles, Rock Honeysuckles, Roses red and white, Wild Hollyhock, Wild Pinks, Golden Rod.

I shall not enter into a minute description of the flowers above-recited, but only just observe, that they much resemble those of the same name which grow in Europe, and are as beautiful in colour, and as perfect in odour, as they can be supposed to be in their wild uncultivated state.

FARI-

FARINACEOUS and LEGUMINOUS
ROOTS, &c.

Maize or Indian Corn, Wild Rice,
Beans, the Squash, &c.

MAIZE or INDIAN CORN grows to the height of about five or six feet, on a stalk full of joints, which is stiff and solid, and when green, abounding with a sweet juice. The leaves are like those of the reed, about two feet in length, and three or four inches broad. The flowers which are produced at some distance from the fruit on the same plant, grow like the ears of oats, and are sometimes white, yellow, or of a purple colour. The seeds are as large as peas, and like them quite naked and smooth, but of a roundish surface, rather compressed. One spike generally consists of about six hundred grains, which are placed closely together in rows to the number of eight or ten, and sometimes twelve. This corn is very wholesome, easy of digestion, and yields as good nourishment as any other sort.

sort. After the Indians have reduced it into meal by pounding it, they make cakes of it and bake them before the fire. I have already mentioned that some nations eat it in cakes before it is ripe, in which state it is very agreeable to the palate and extremely nutritive.

WILD RICE. This grain, which grows in the greatest plenty throughout the interior parts of North America, is the most valuable of all the spontaneous productions of that country. Exclusive of its utility, as a supply of food for those of the human species who inhabit this part of the continent, and obtained without any other trouble than that of gathering it in, the sweetness and nutritious quality of it attracts an infinite number of wild fowl of every kind, which flock from distant climes to enjoy this rare repast; and by it become inexpressibly fat and delicious. In future periods it will be of great service to the infant colonies, as it will afford them a present support, until in the course of cultivation other supplies may be produced; whereas in those realms which are not furnished with this bounteous
gift

gift of nature, even if the climate is temperate and the soil good, the first settlers are often exposed to great hardships from the want of an immediate resource for necessary food. This useful grain grows in the water where it is about two feet deep, and where it finds a rich muddy soil. The stalks of it, and the branches or ears that bear the seed, resemble oats both in their appearance and manner of growing. The stalks are full of joints, and rise more than eight feet above the water. The natives gather the grain in the following manner: nearly about the time that it begins to turn from its milky state and to ripen, they run their canoes into the midst of it, and tying bunches of it together just below the ears with bark, leave it in this situation three or four weeks longer, till it is perfectly ripe. About the latter end of September they return to the river, when each family having its separate allotment, and being able to distinguish their own property by the manner of fastening the sheaves, gather in the portion that belongs to them. This they do by placing their canoes close to the bunches of rice,
in

in such position as to receive the grain when it falls, and then beat it out, with pieces of wood formed for that purpose. Having done this, they dry it with smoke, and afterwards tread or rub off the outside husk; when it is fit for use they put it into the skins of fawns or young buffalos taken off nearly whole for this purpose and sewed into a sort of sack, wherein they preserve it till the return of their harvest. It has been the subject of much speculation why this spontaneous grain is not found in any other regions of America, or in those countries situated in the same parallels of latitude, where the waters are as apparently adapted for its growth as in the climates I treat of. As for instance, none of the countries that lie to the south and east of the great lakes, even from the provinces north of the Carolinas to the extremities of Labradore, produce any of this grain. It is true I found great quantities of it in the watered lands near Detroit, between Lake Huron and Lake Erié, but on enquiry I learned that it never arrived nearer to maturity than just to blossom; after which it appeared blighted, and died

died away. This convinces me that the northwest wind, as I have before hinted, is much more powerful in these than in the interior parts; and that it is more inimical to the fruits of the earth, after it has passed over the lakes and become united with the wind which joins it from the frozen regions of the north, than it is farther to the westward.

BEANS. These are nearly of the same shape as the European beans, but are not much larger than the smallest size of them. They are boiled by the Indians and eaten chiefly with bear's flesh.

The SQUASH. They have also several species of the MELON or PUMPKIN, which by some are called Squashes, and which serve many nations partly as a substitute for bread. Of these there is the round, the crane-neck, the small flat, and the large oblong Squash. The smaller sorts being boiled, are eaten during the summer as vegetables; and are all of a pleasing flavor. The crane-neck, which greatly excels all the others, are usually hung up for a winter's store,
and

and in this manner might be preserved for several months.

I am sensible that I have not treated the foregoing Account of the natural productions of the interior parts of North America with the precision of a naturalist. I have neither enumerated the whole of the trees, shrubs, plants, herbs, &c. that it produces, nor have I divided them into classes according to their different genera after the Linnæan method: the limits of my Work, in its present state, would not permit me to pursue the Subject more copiously. However, if the favour of the Public should render a future edition necessary, as I trust, from the number of Subscribers who have already favoured me with their Names, will be the case, I then propose to enlarge it considerably, and to insert many interesting particulars and descriptions, which the size of the present Edition obliges me to curtail or entirely to omit.

APPEN -