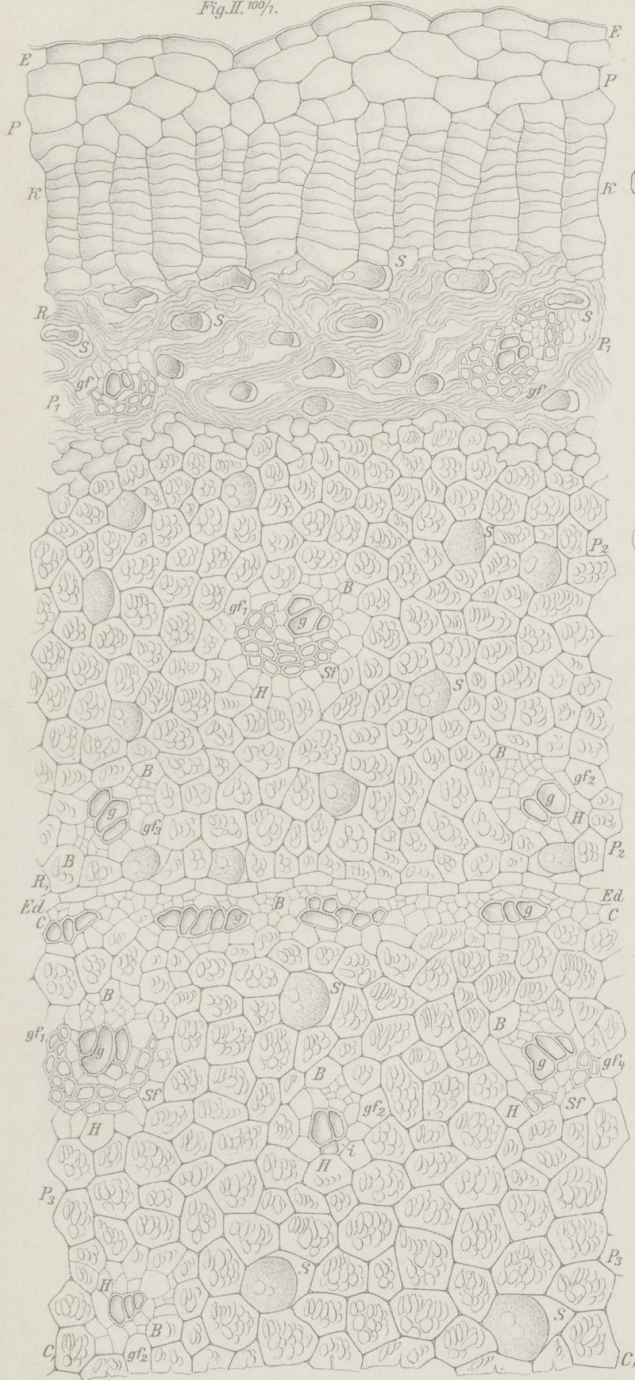


Rhizoma Zingiberis.

L. Koch, Pharmakognostischer Atlas, Bd. 1.

Taf. XXIV.

Fig. II. 100 $\times$ .



Ludwig Koch gez.

Fig. I. 8 $\times$ .

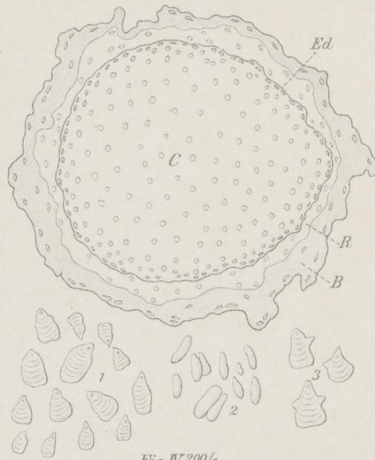


Fig. IV. 200 $\times$ .

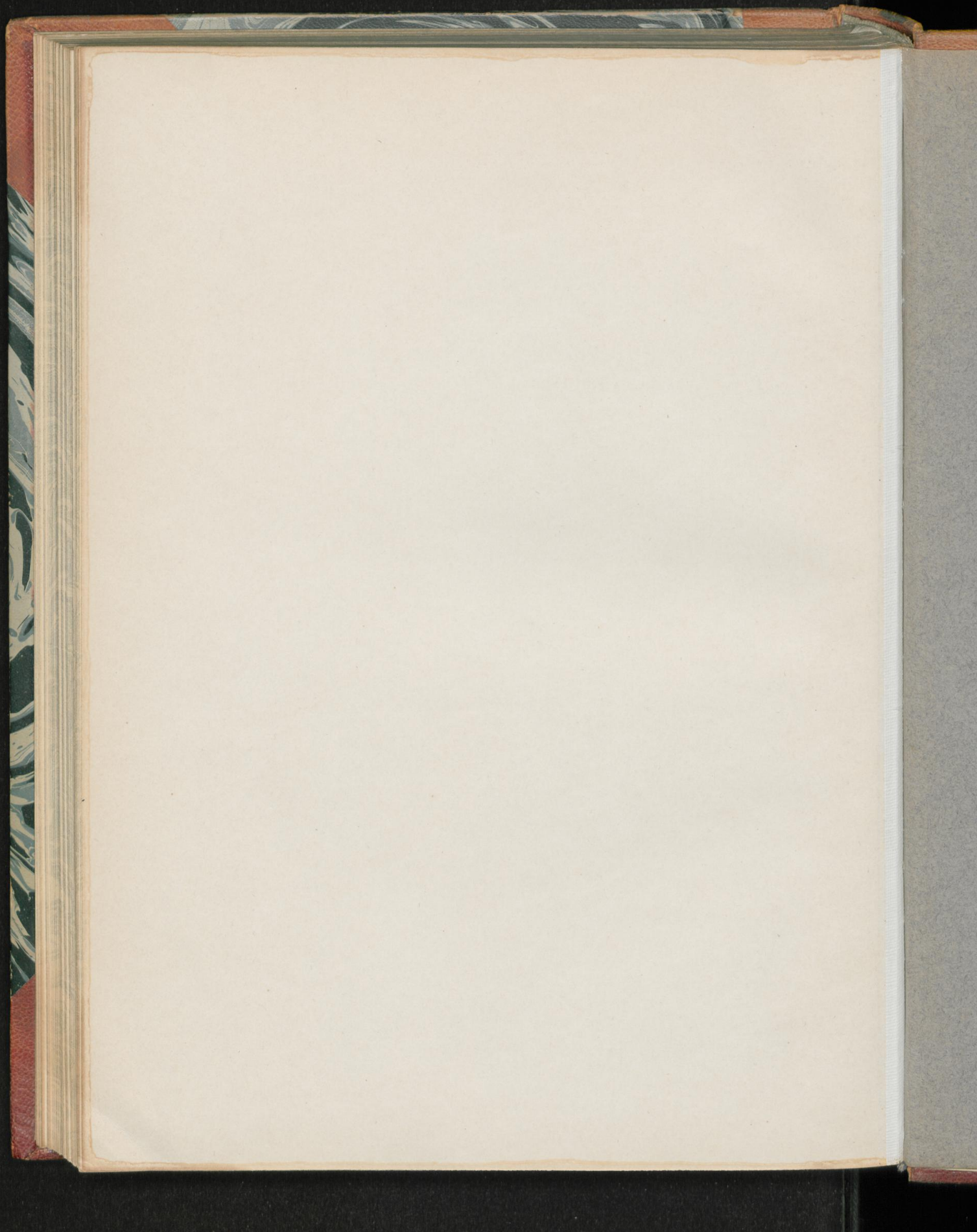


Fig. III. 100 $\times$ .



E. Lane Lith. Juss. Berlin.

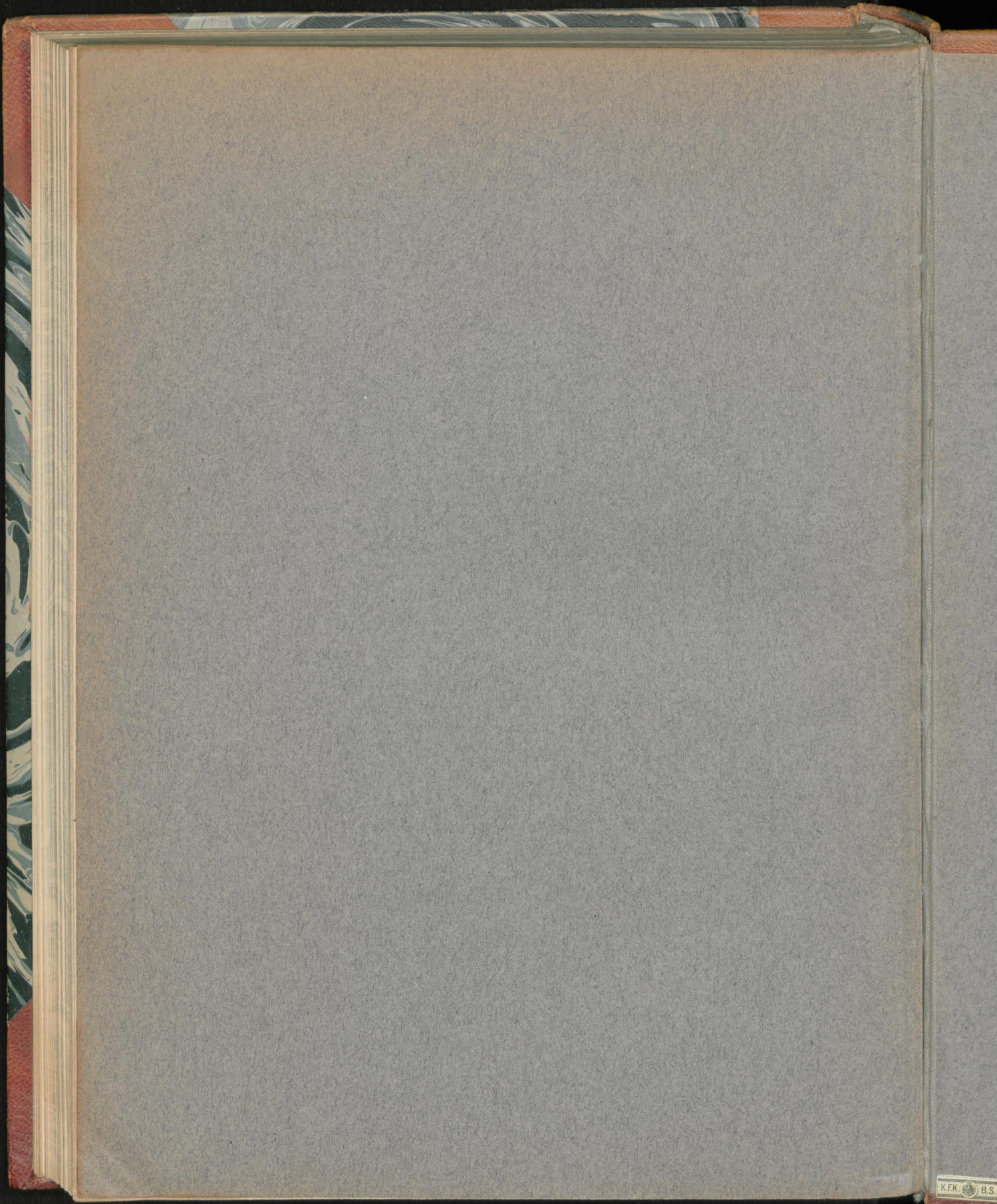












K.F.K. B.S.