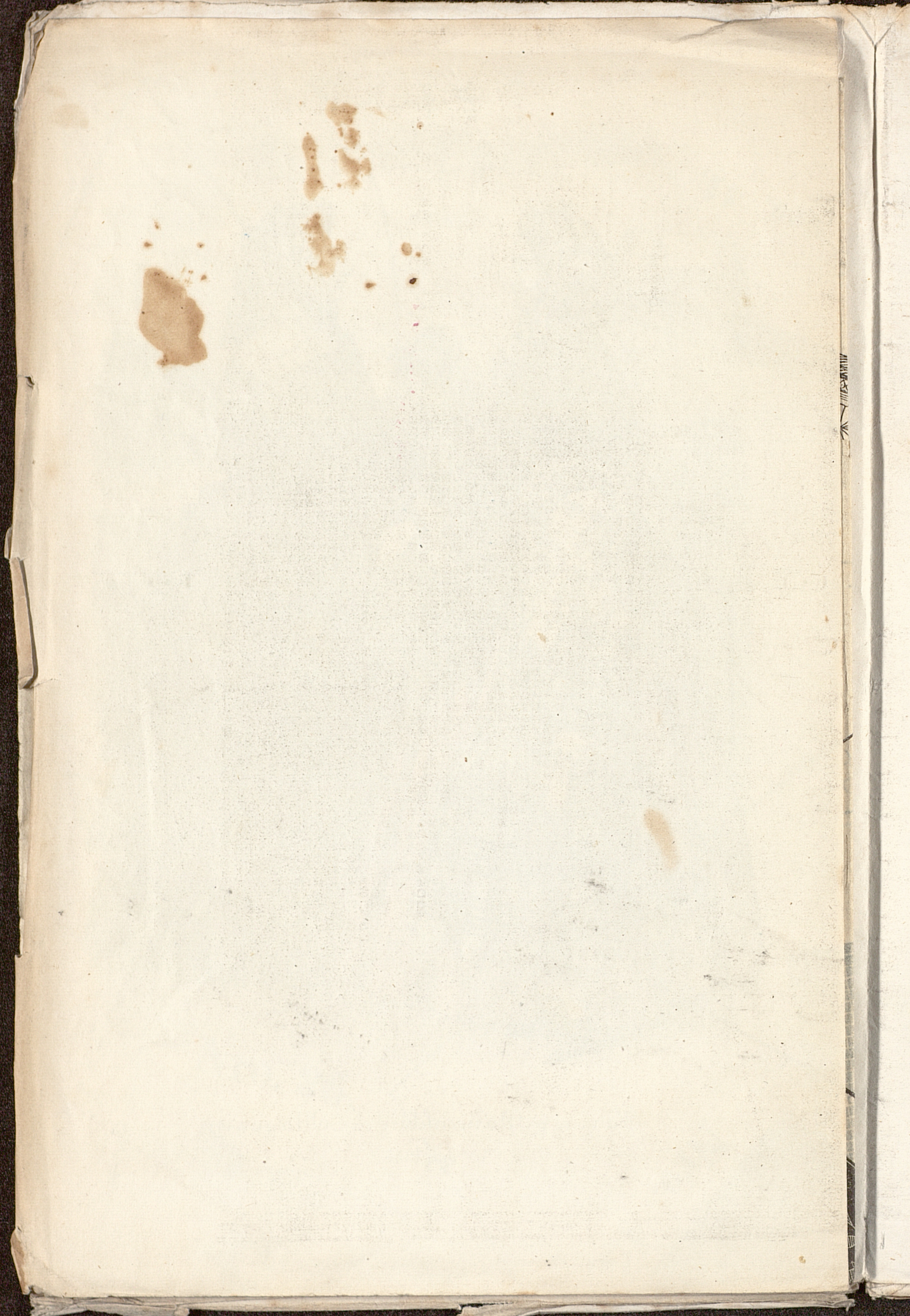
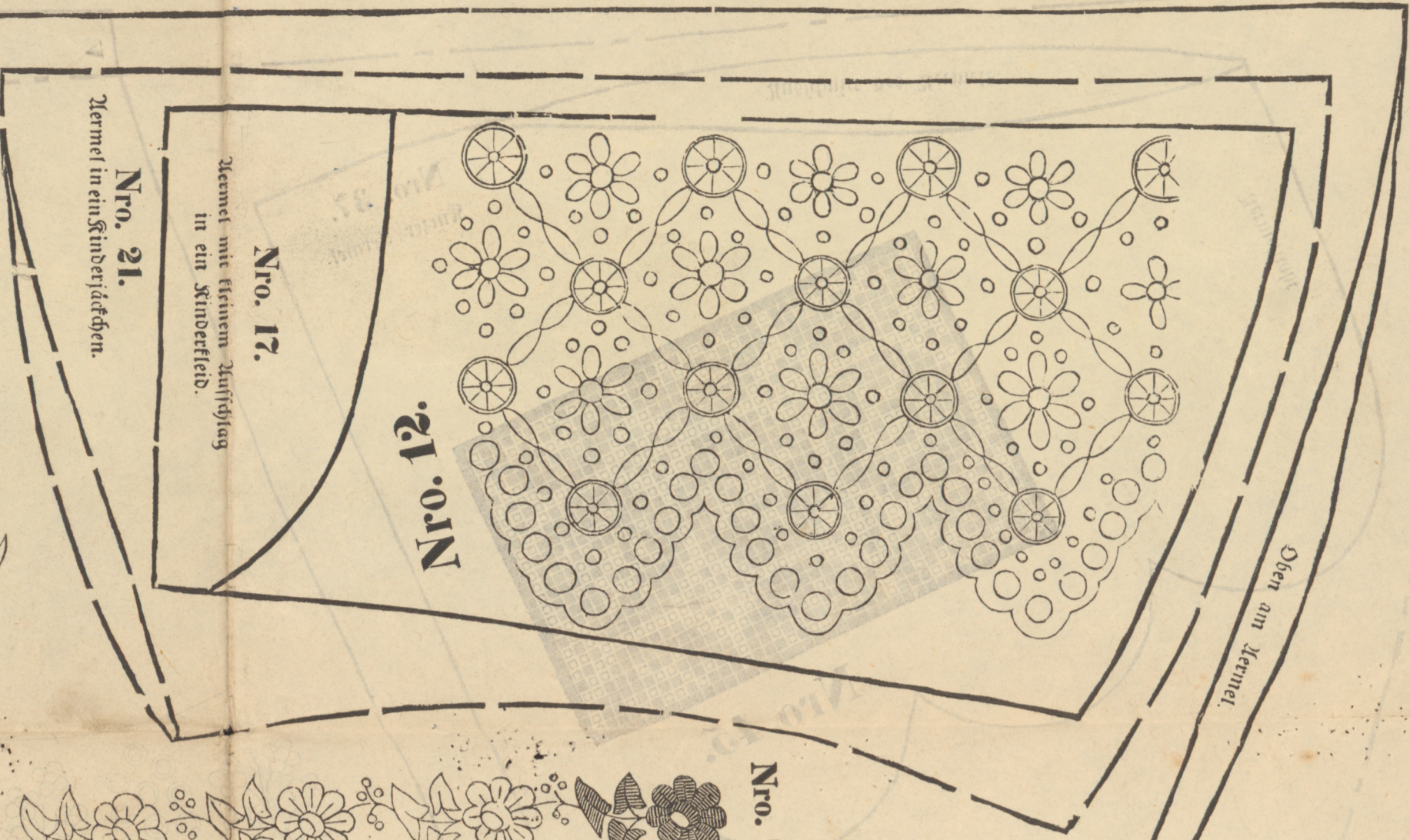




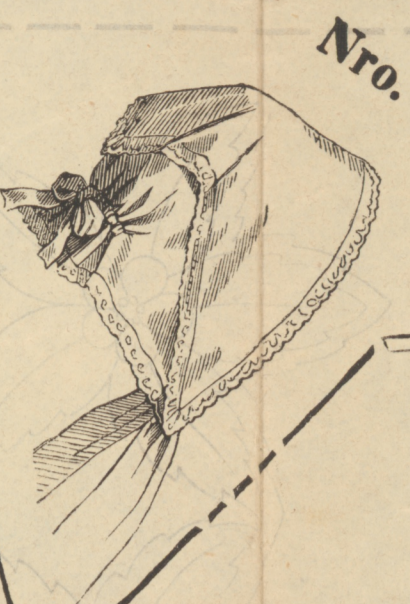
Pariser Damenkleider-Magazin.

October 1853.

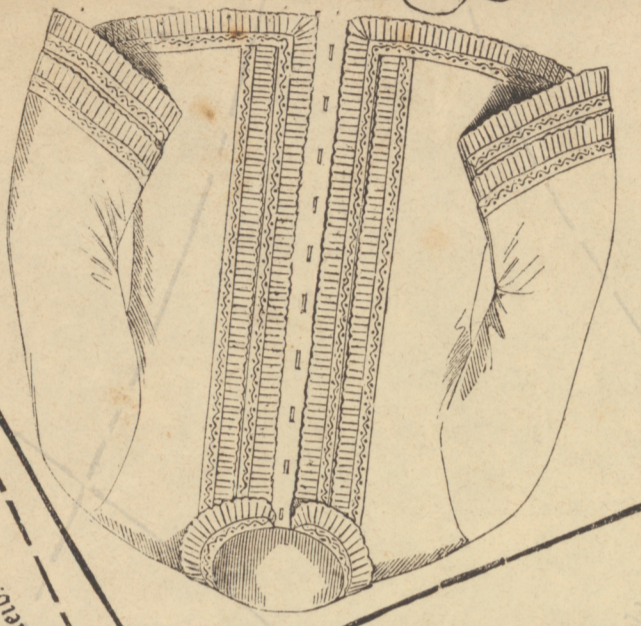




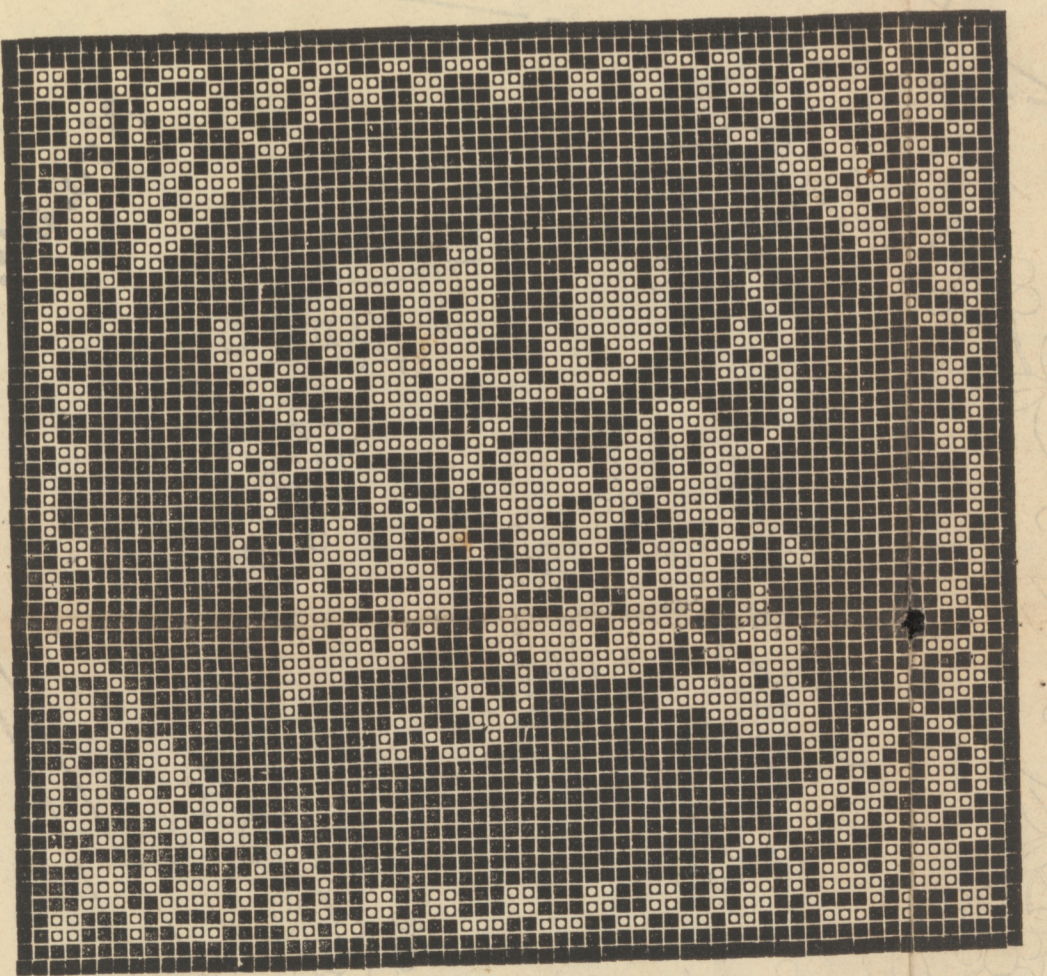
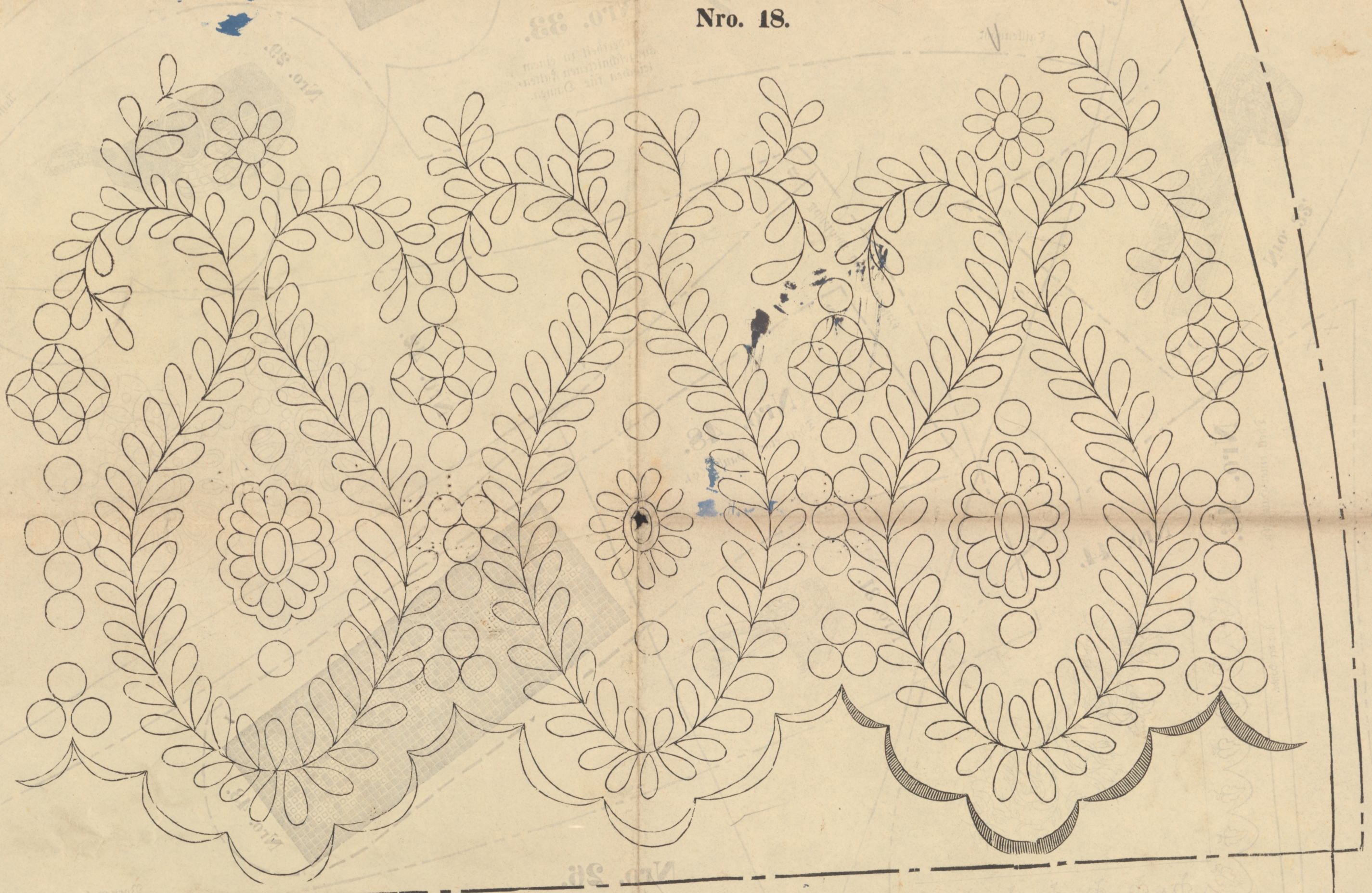
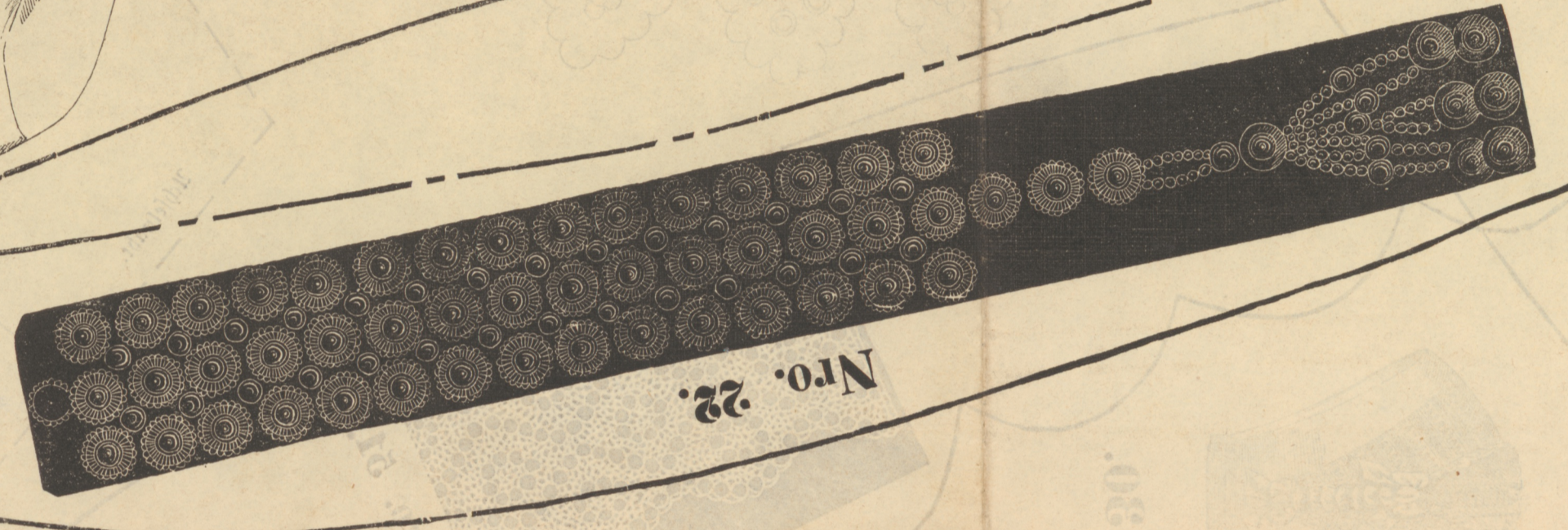
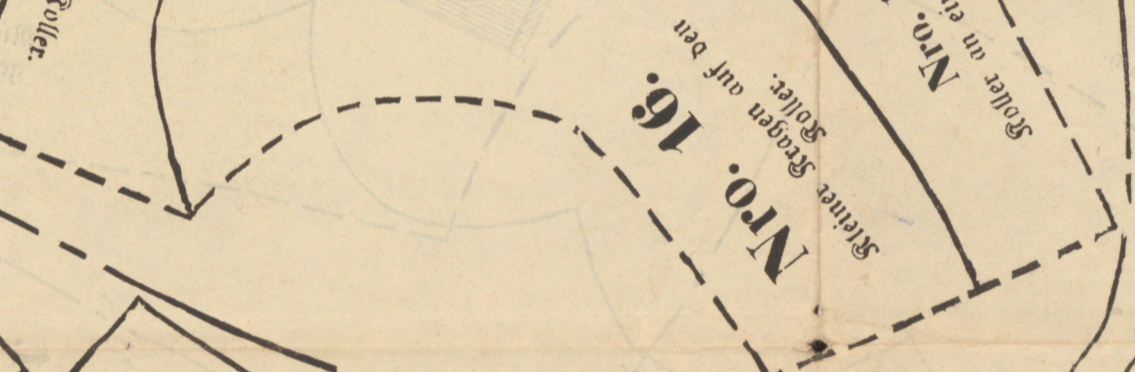
Nro. 4. Zermet in einer Brochade



Nro. 10. Zermet in einer Brochade



Nro. 8.



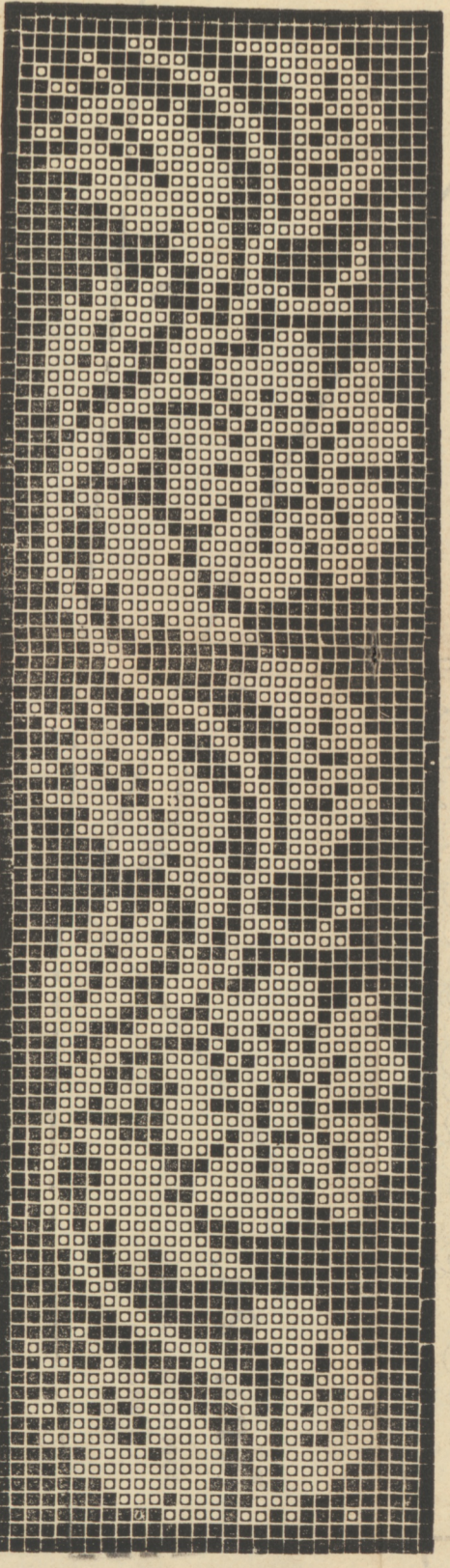
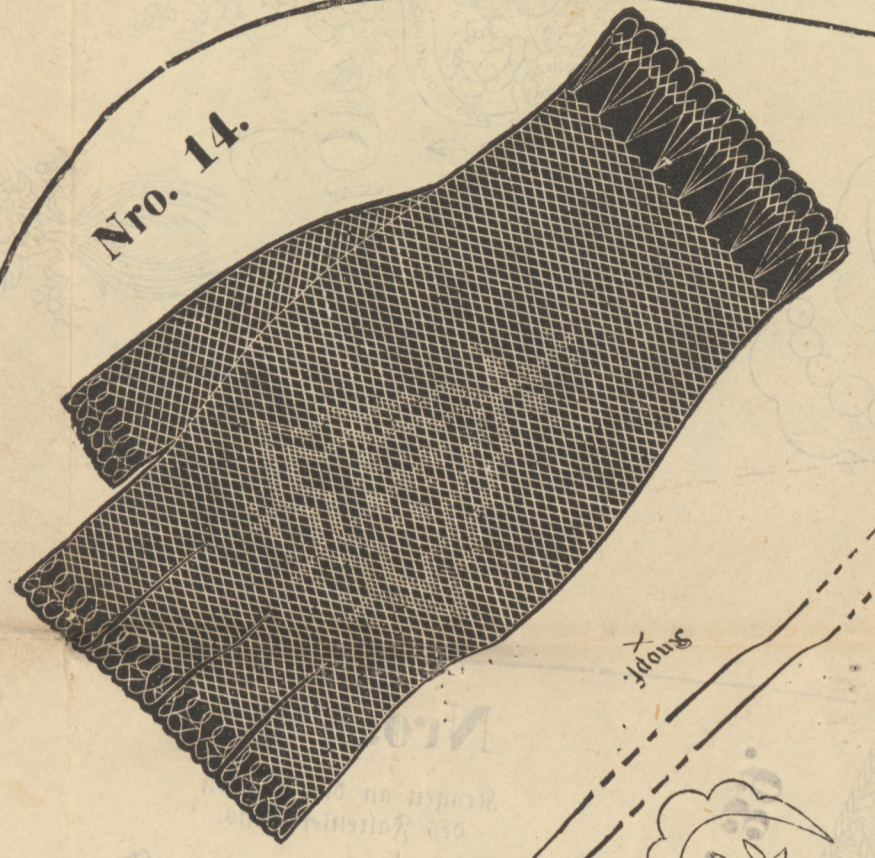
Nro. 3. Zermet in einer Brochade

Nro. 2. Zermet in einer Brochade

Nro. 19. Zermet in einer Brochade

Nro. 20. Zermet in einer Brochade

Nro. 5.



Nro. 11.

X

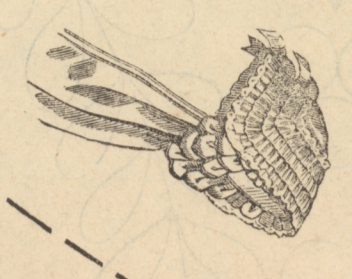
Stil der Dame.

Nro. 46.
Zwei einer Größe (n).

Nro. 44.

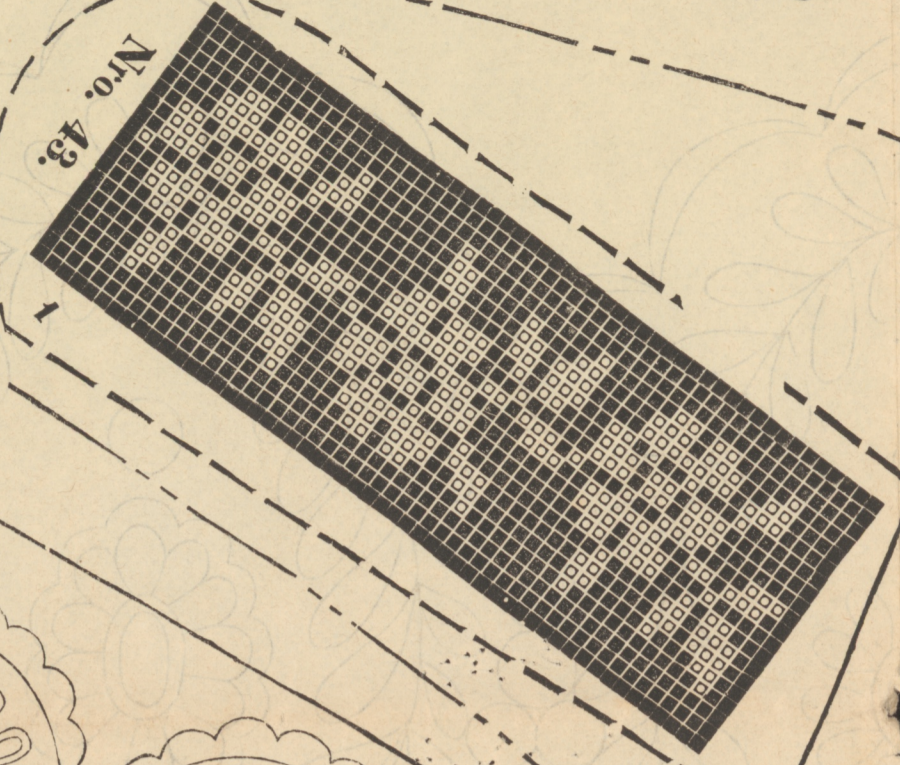


Nro. 31



Nro. 48.
Zwei einer Größe (c).

Nro. 26.
Kragen des Mantels.



Nro. 43.

Spitzen kraut.
Einfügung des Kragens.
Noppen herunter am Mantel.

Nro. 38.



Nro. 25.
Düfeneckchen des Mantels.

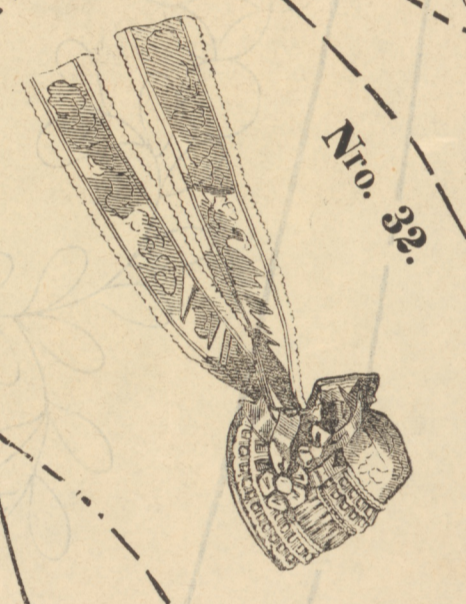
Nro. 50.



Nro. 24.
Spitzen eines Mantels.

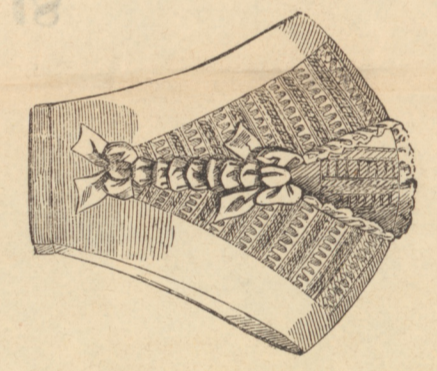
Spitzen des Kragens.

Nro. 42.
Zwei einer Größe (d).



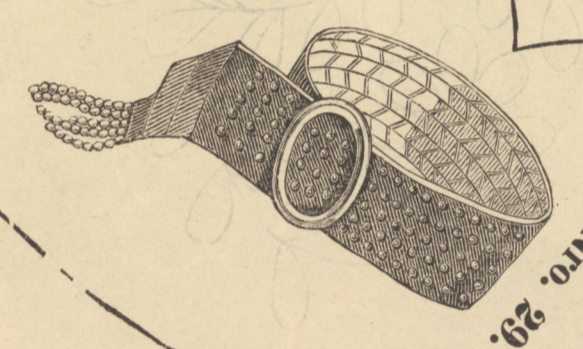
Faltenabst.

Nro. 30.

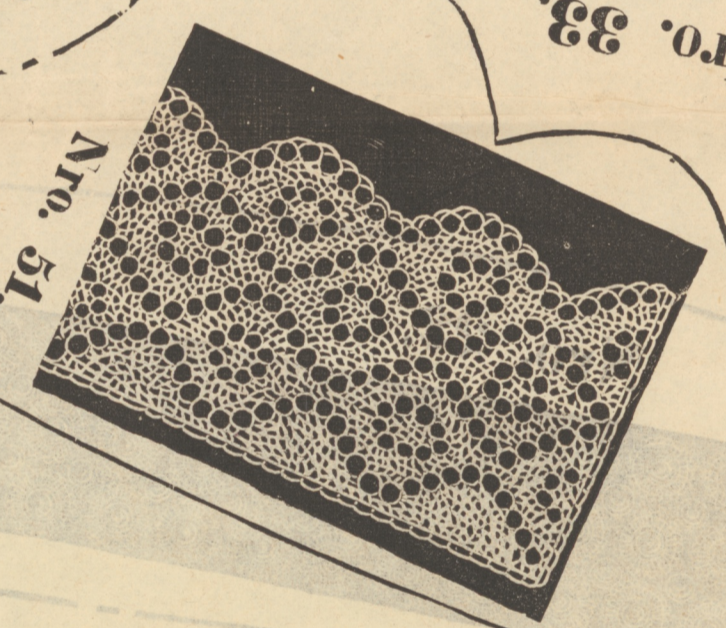


Nro. 33.
Spitzen in einem ausgefallenen Kragen für Damen.

Nro. 29.



Nro. 31.

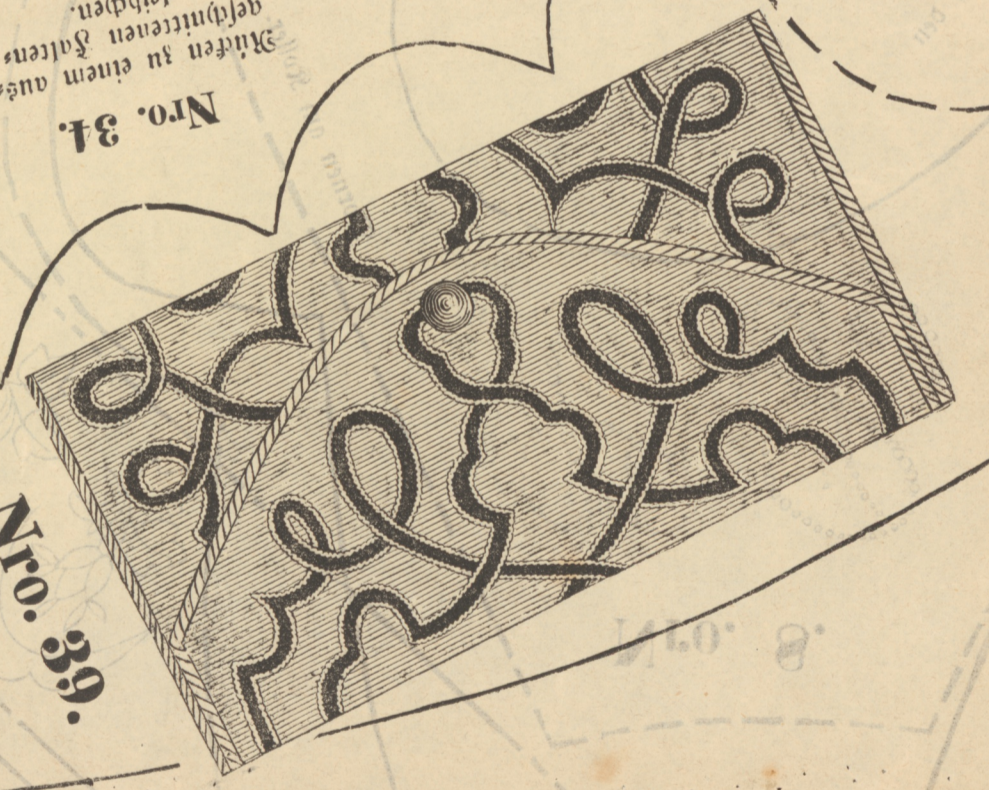


Nro. 41.



Nro. 49.
Zwei einer Größe (f).

Nro. 34.
Mützen in einem ausgefallenen Kragen.



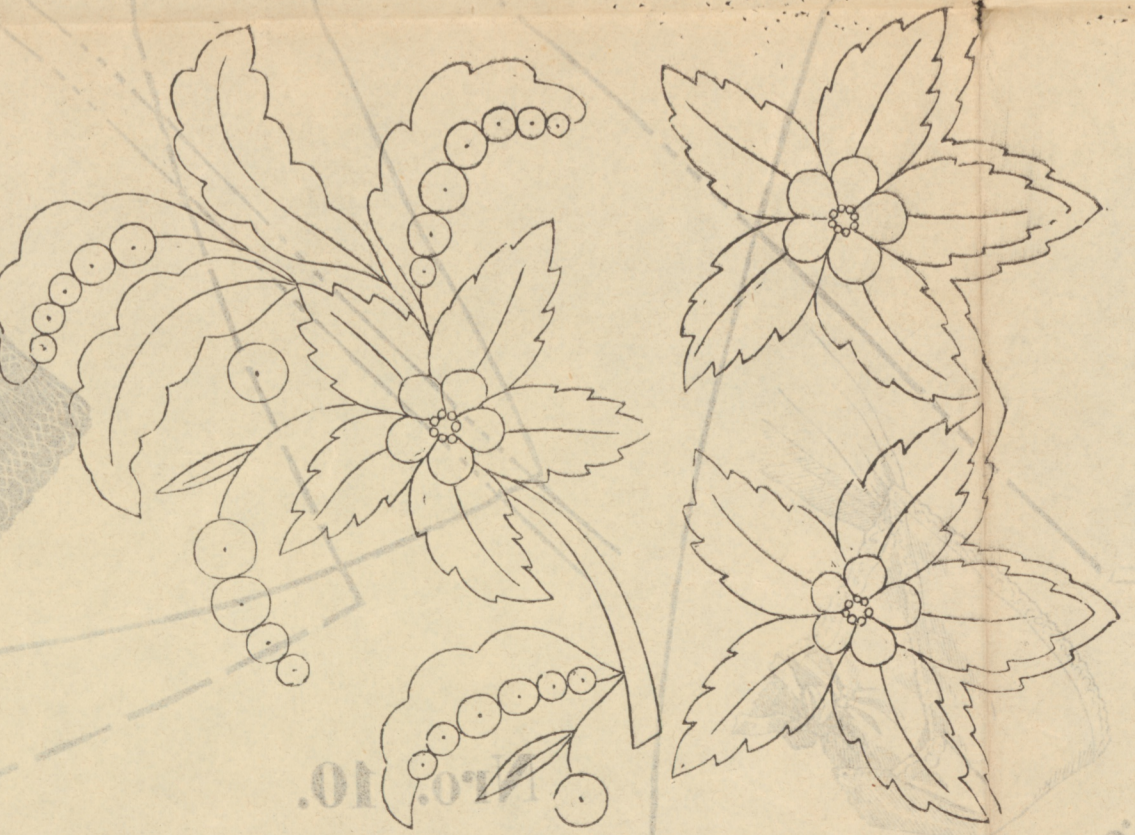
Nro. 39.

Nro. 36.
Kragen an den Mützen des Faltenabst.



Nro. 28.

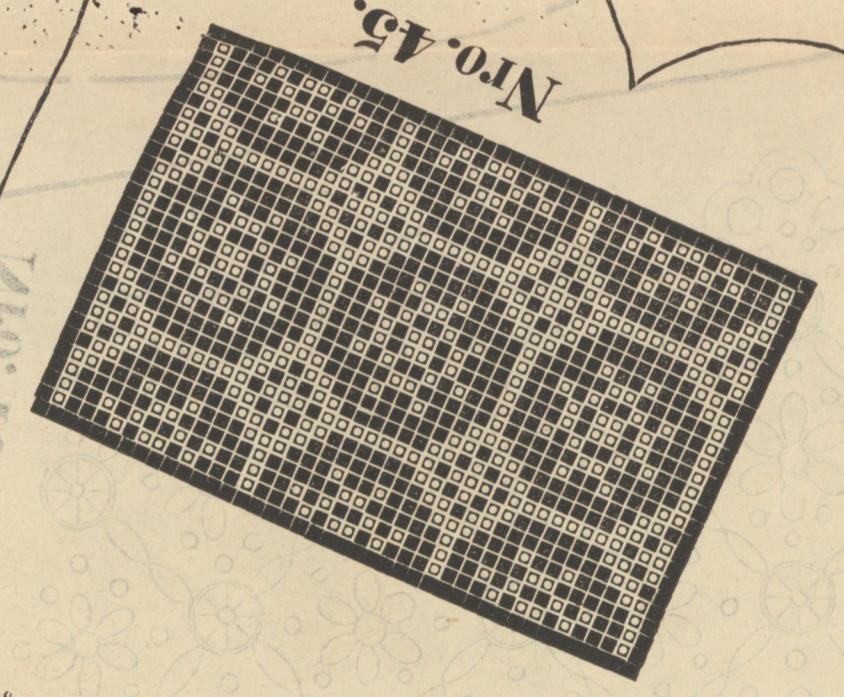
Nro. 27.



Nro. 40.



Nro. 45.



Nro. 37.
Starter Kragen.

Ausschnitt des Ärmels.

Hinten herauf an dem Mantel.