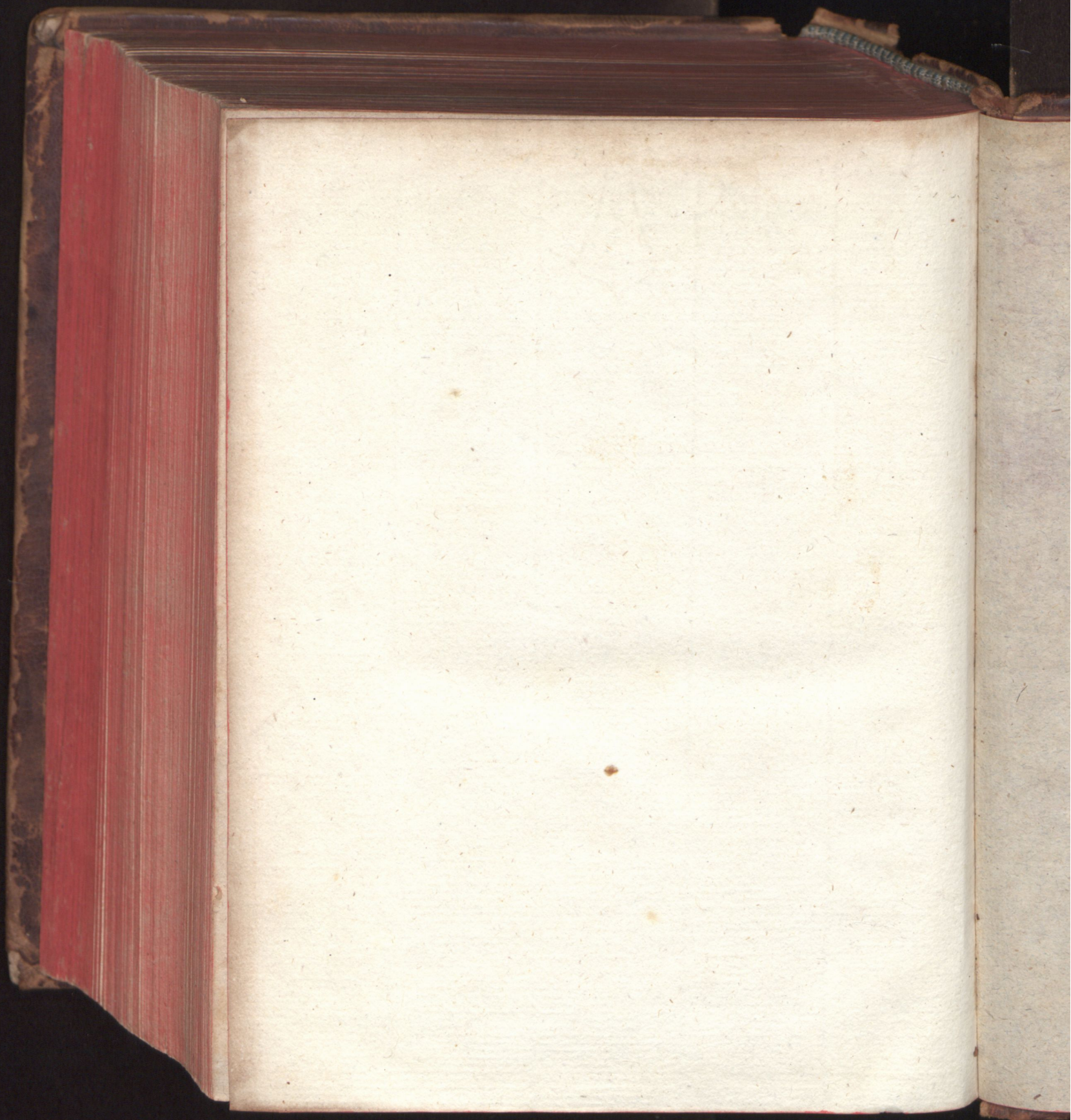


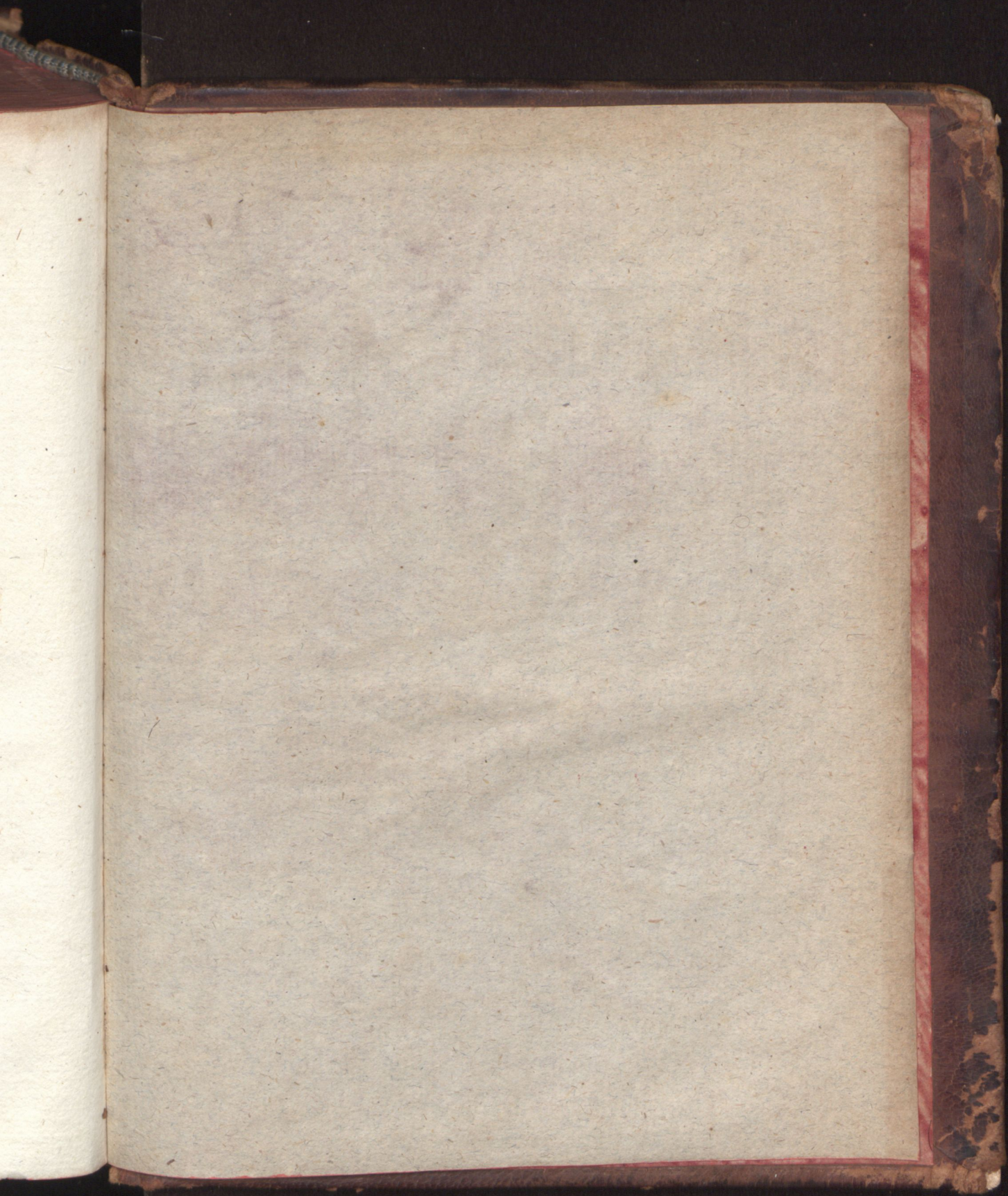
es Reichs.  
sq. Proto-  
de 1611.  
te ex iure  
zur Dioth.  
) auff das  
reich hätte  
gefordert/  
317. sq.  
318. sqq.  
puncto de  
Resolutio  
dicto pto.  
n Württen-  
323. Rit.  
reiben an  
und Accis-  
537. sq.  
itterschaft  
o de eod.  
Bürtenberg  
Bürtenber-  
affe wegen  
642. sq.  
puncto de  
il. Grava-  
Freyphei-  
Drdnung.  
rsfl. Graff.  
zu 3. 570.  
burg 352.  
Spolii zu  
Zwysalten  
lium. Col-  
lich wegen  
afft p. 80.  
zu Hohen-  
10.  
ggburg und  
as liberum  
hen denen  
Zünfftigen  
4. sqq.

Sachen











Inches 1 2 3 4 5 6 7 8  
Centimetres 1 2 3 4 5 6 7 8 9 10 11 12 13 14 15 16 17 18 19

**Farbkarte #13**

**B.I.G.**

Blue	Cyan	Green	Yellow	Red	Magenta	White	3/Color	Black
Light Blue	Light Cyan	Light Green	Light Yellow	Light Red	Light Magenta	White	Light Purple	Light Gray
Dark Blue	Dark Cyan	Dark Green	Dark Yellow	Dark Red	Dark Magenta	White	Dark Purple	Dark Gray







Inches

1

2

3

4

5

6

7

8

9

10

11

12

13

14

15

16

17

18

19

20

Centimetres

Farbkarte #13

Blue

Cyan

Green

Yellow

Red

Magenta

White

3/Color

Black

B.I.G.

8

19

7

17

6

15

5

13

4

10

3

7

8

6

5

4

3

2

1

1

2

3

4

5

6

7

8