

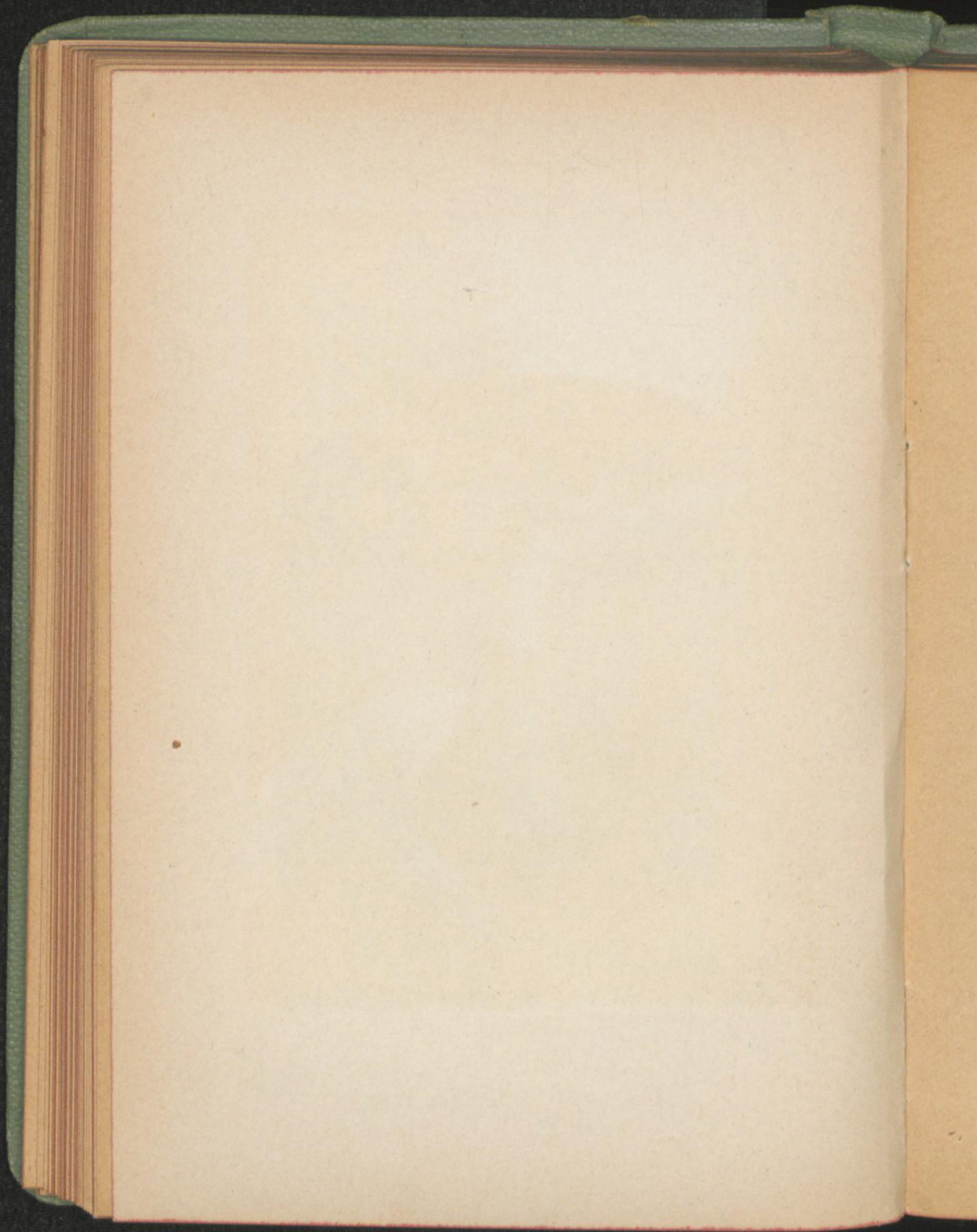
Seite
115
184
174
93
203
190
157
144
160
187
187
175
104
202
155
204
164
166
163
180
132
156
153
127
136

Tafel 1.



Eckstein & Stahle, Lith. Kunst-Anst., Stuttgart.

Fliegenpilz, *Amanita muscaria* L.

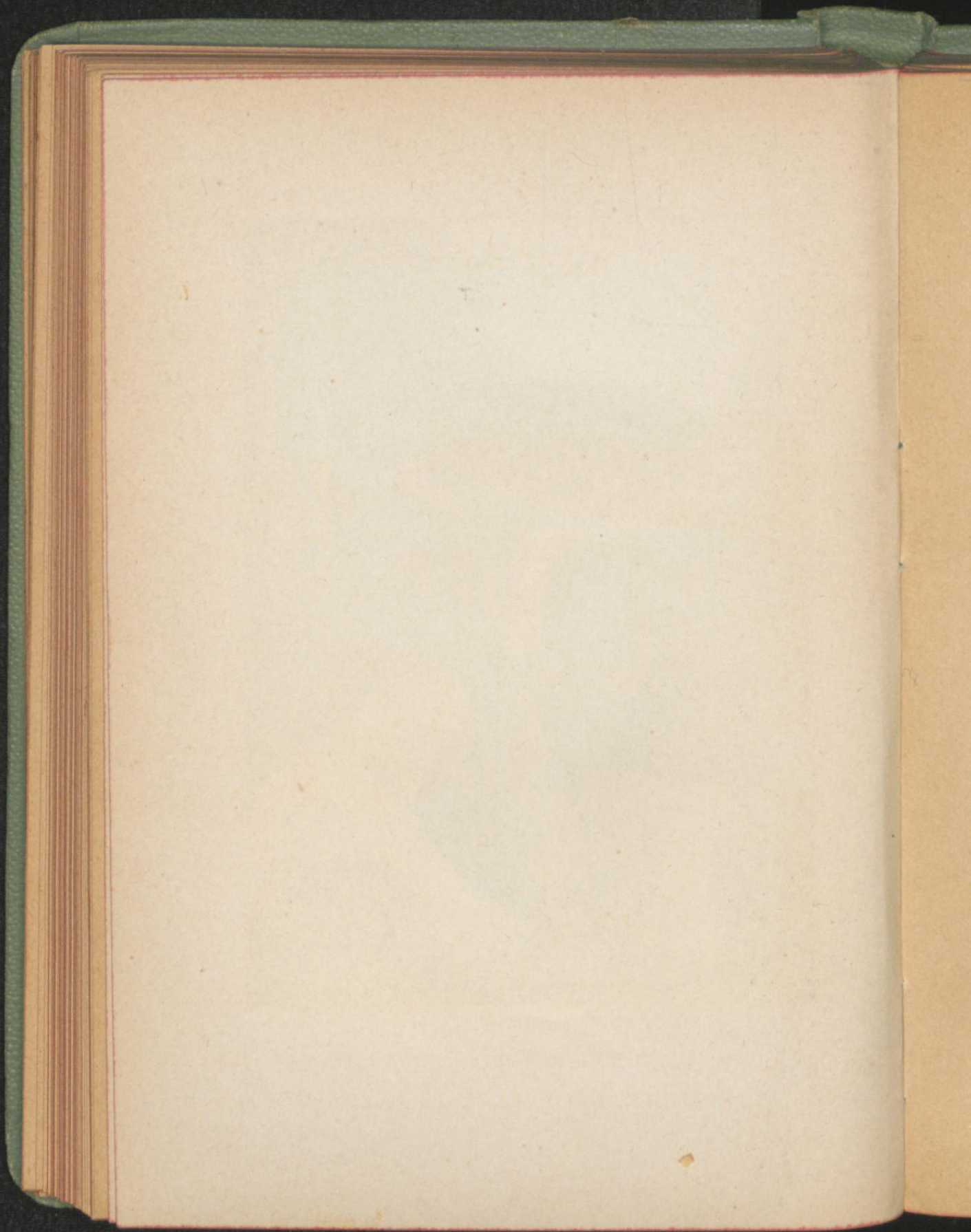


Tafel 2.



Eckstein & Stahle, Lith. Kunst Anst., Stuttgart.

Perlpilz, *Amanita rubescens* Fr.

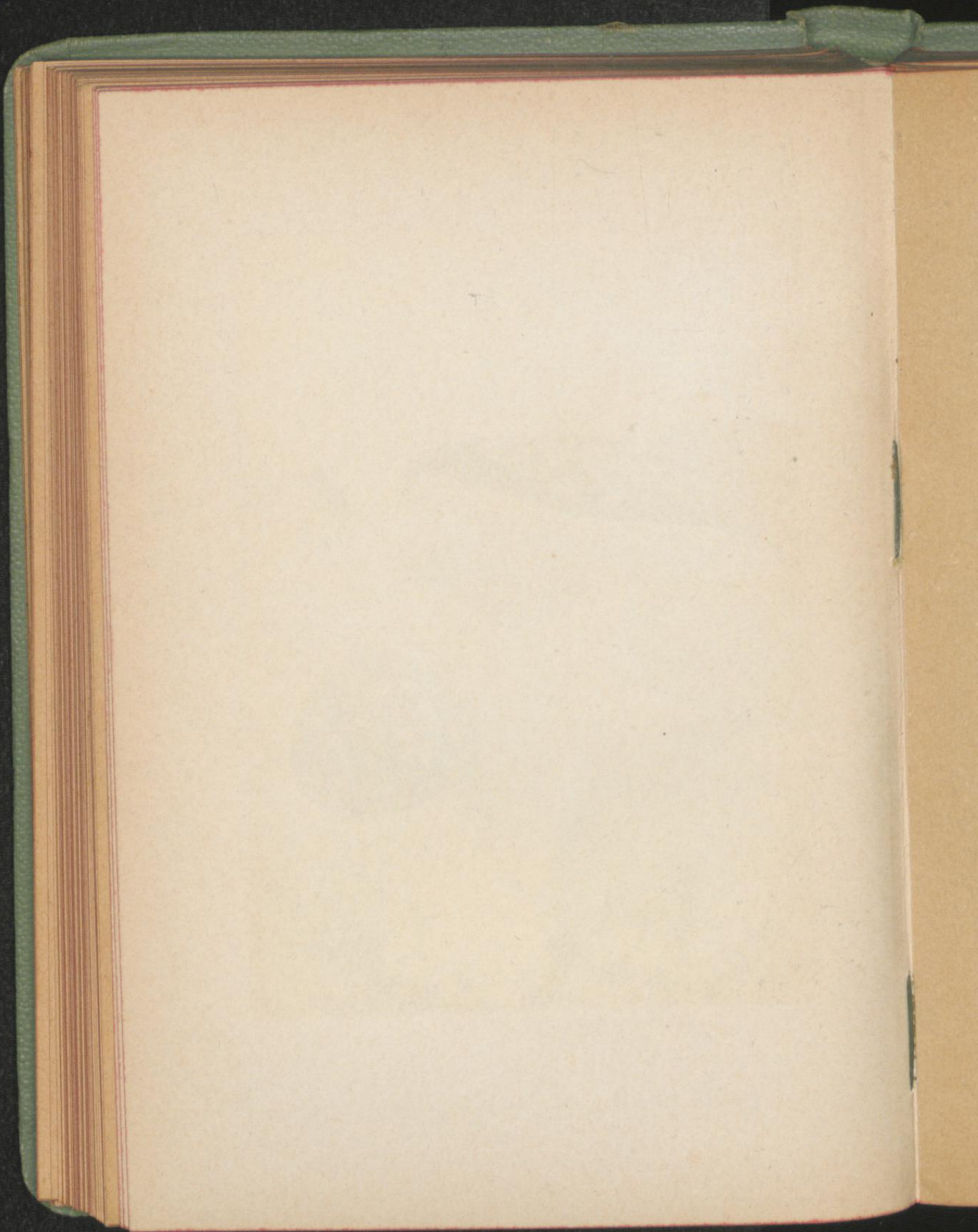


Tafel 3.



Eckstein & Stähle, Lith. Kunst-Anst., Stuttgart

Pantherpilz, *Amanita pantherina* D. C.

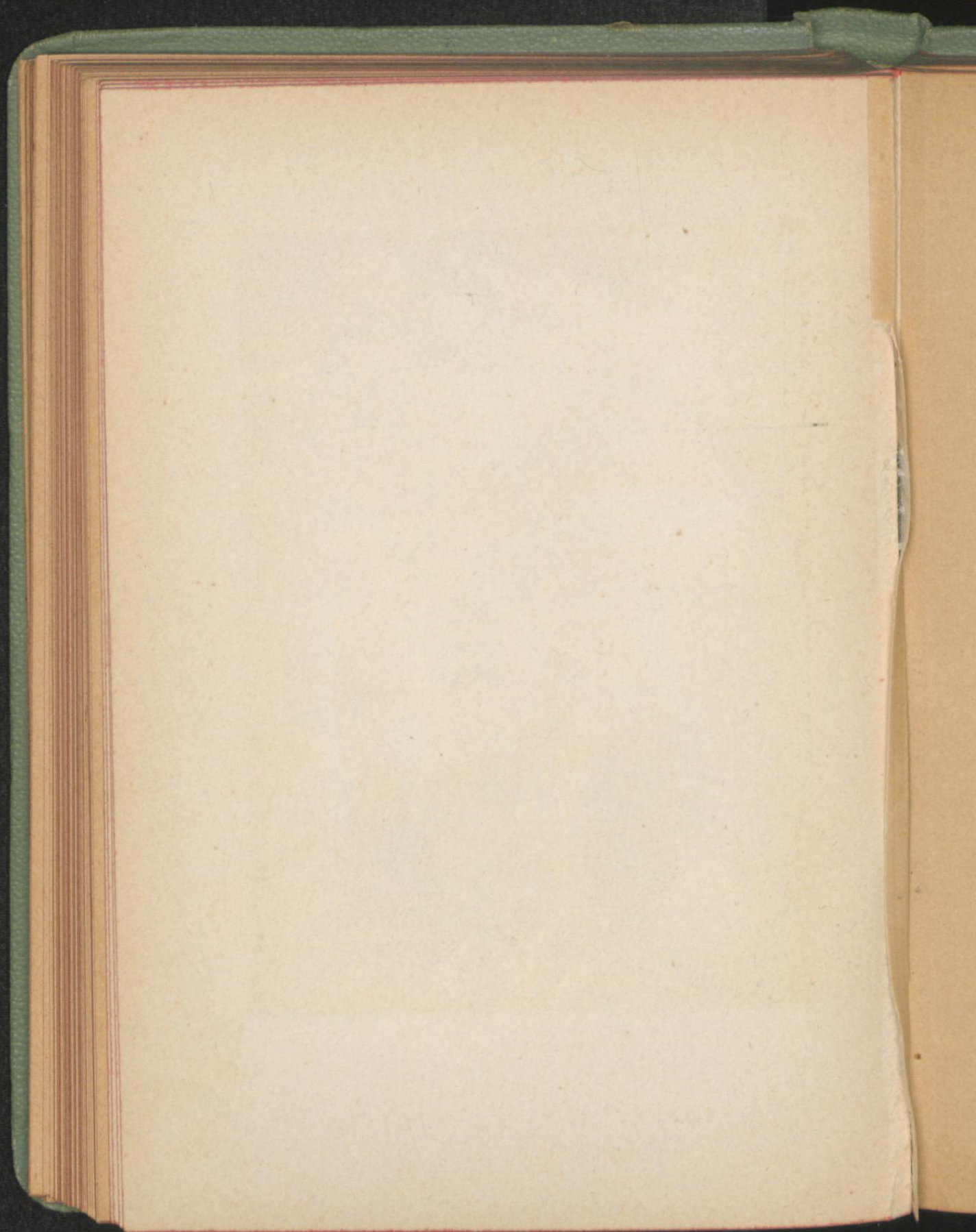


Tafel 4.



Eckstein & Stähle, Lith. Kunst Anst., Stuttgart.

Knollenblätterpilz, *Amanita phalloides* Fr.

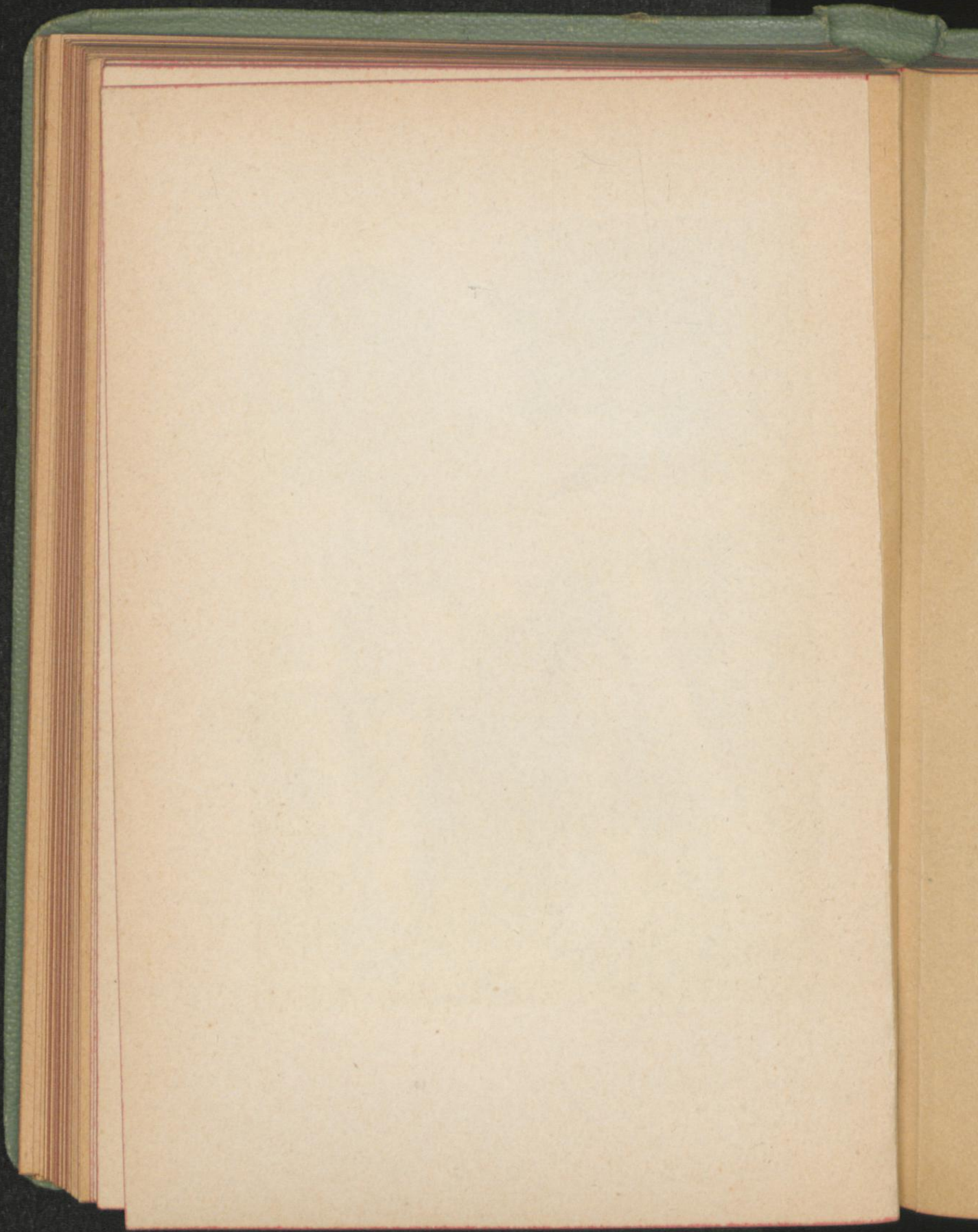


Tafel 5.



Eckstein & Stähle, Lith. Kunst-Anst., Stuttgart.

a. Scheidenpilz, *Amanita vaginata* Bull. b. Runzeliger Schuppenpilz, *Rozites caperata* Pers.

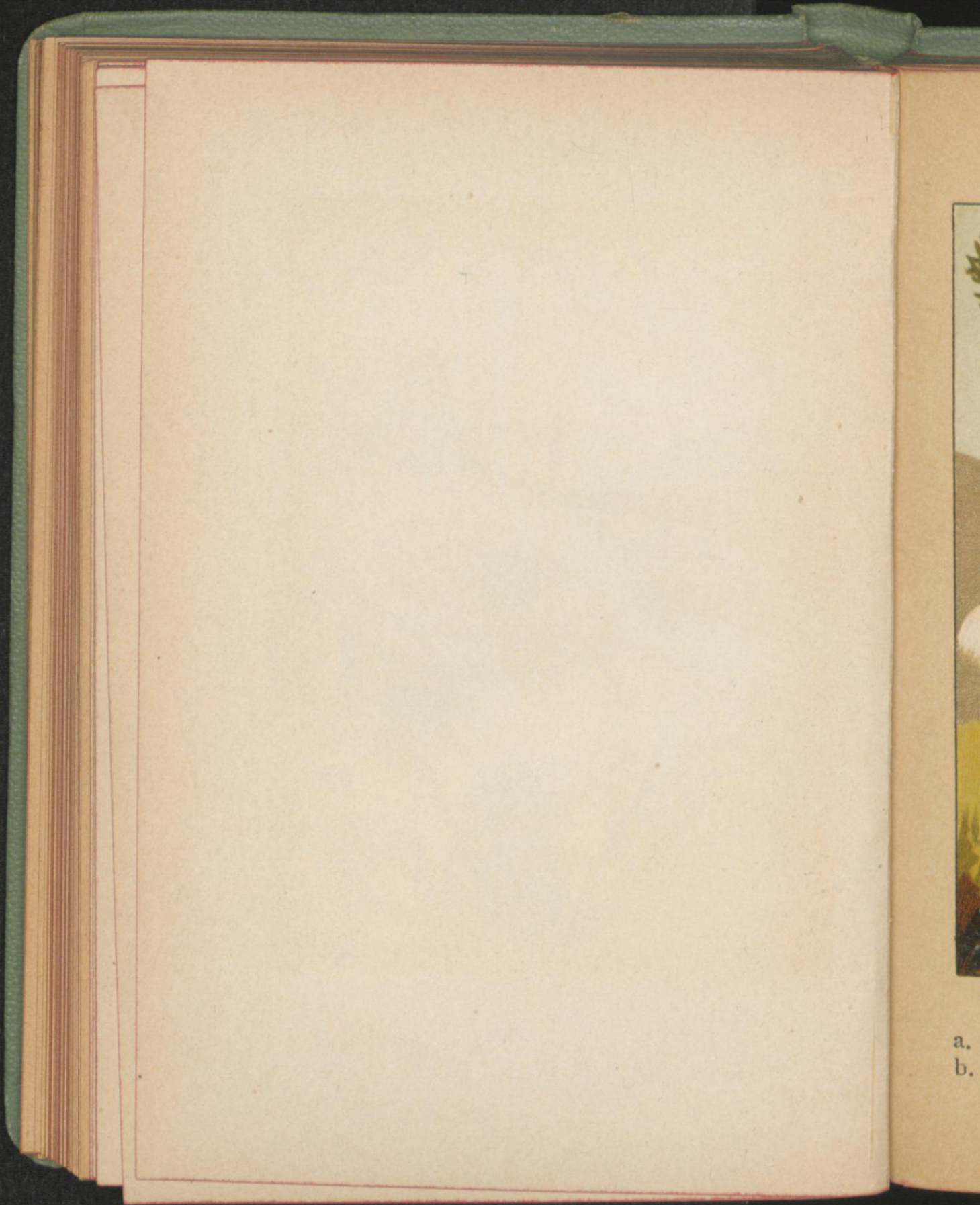


Tafel 6.



Eckstein & Stähle, Lith. Kunst-Anst., Stuttgart.

Zottiger Birkenreizker, *Lactarius torminosus*
Schaeff.



a.
b.

Tafel 7.



Eckstein & Stähle, Lith. Kunst-Anst., Stuttgart.

- a. Pfeffer-Milchpilz, *Lactarius piperatus* Scop.
b. Grubiger Erdschieber, *Lactarius scrobiculatus* Scop.

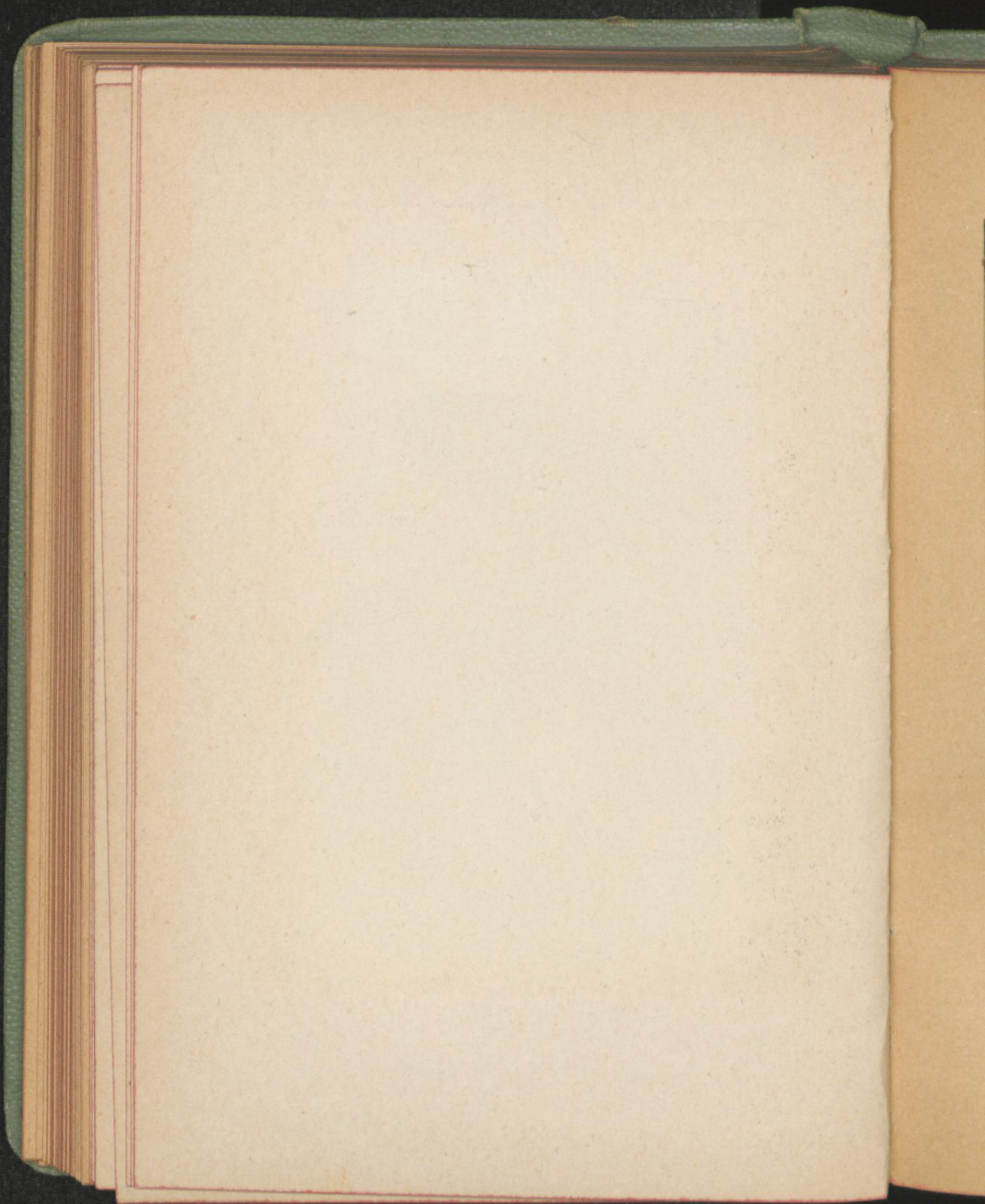


Tafel 8.



Eckstein & Stähle, Lith. Kunst Anst., Stuttgart

Spei-Täubling, *Russula emetica* Fr.

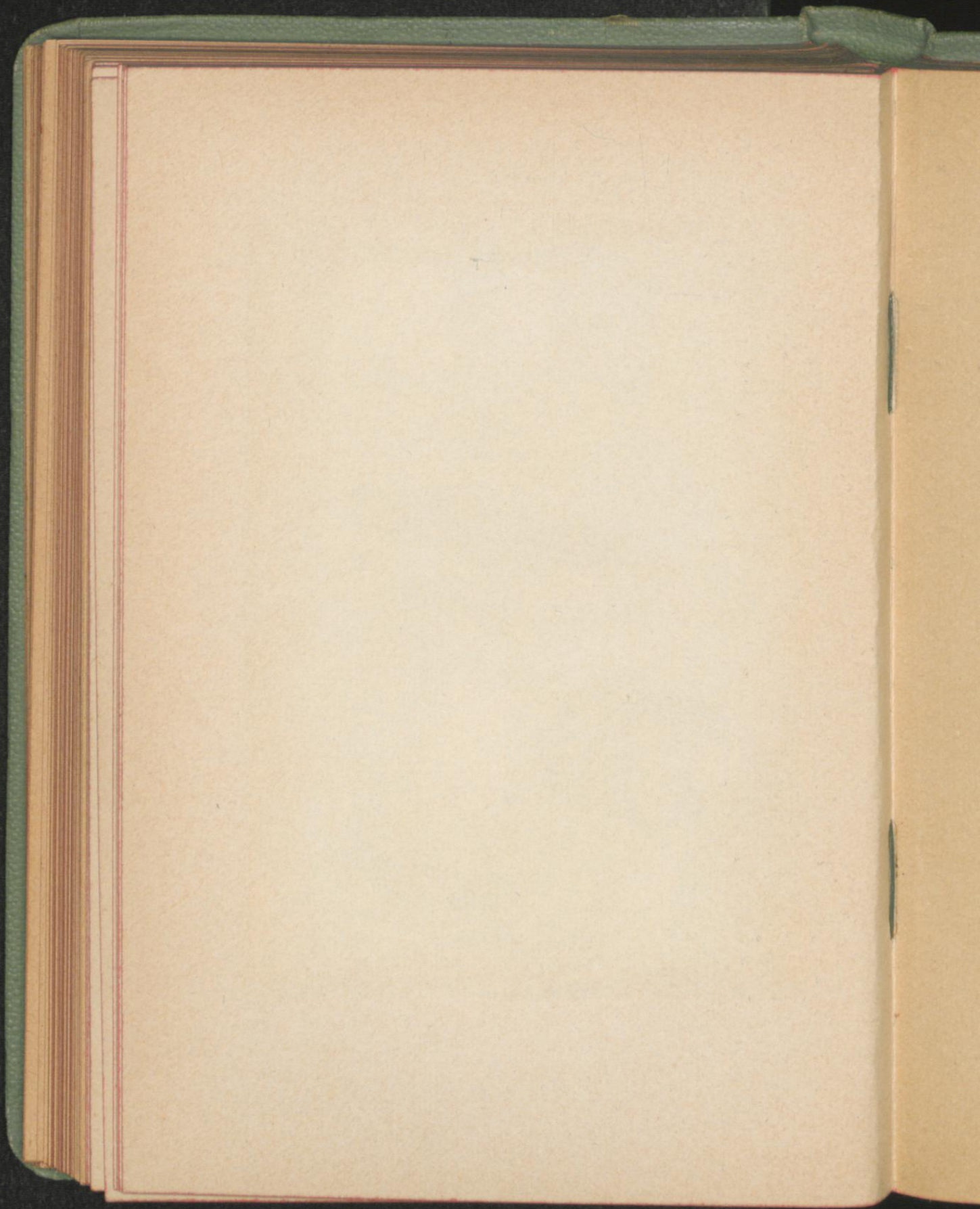


Tafel 9.



Eckstein & Stahle, Lith. Kunst Anst., Stuttgart.

Stink-Täubling, *Russula foetens* Pers.

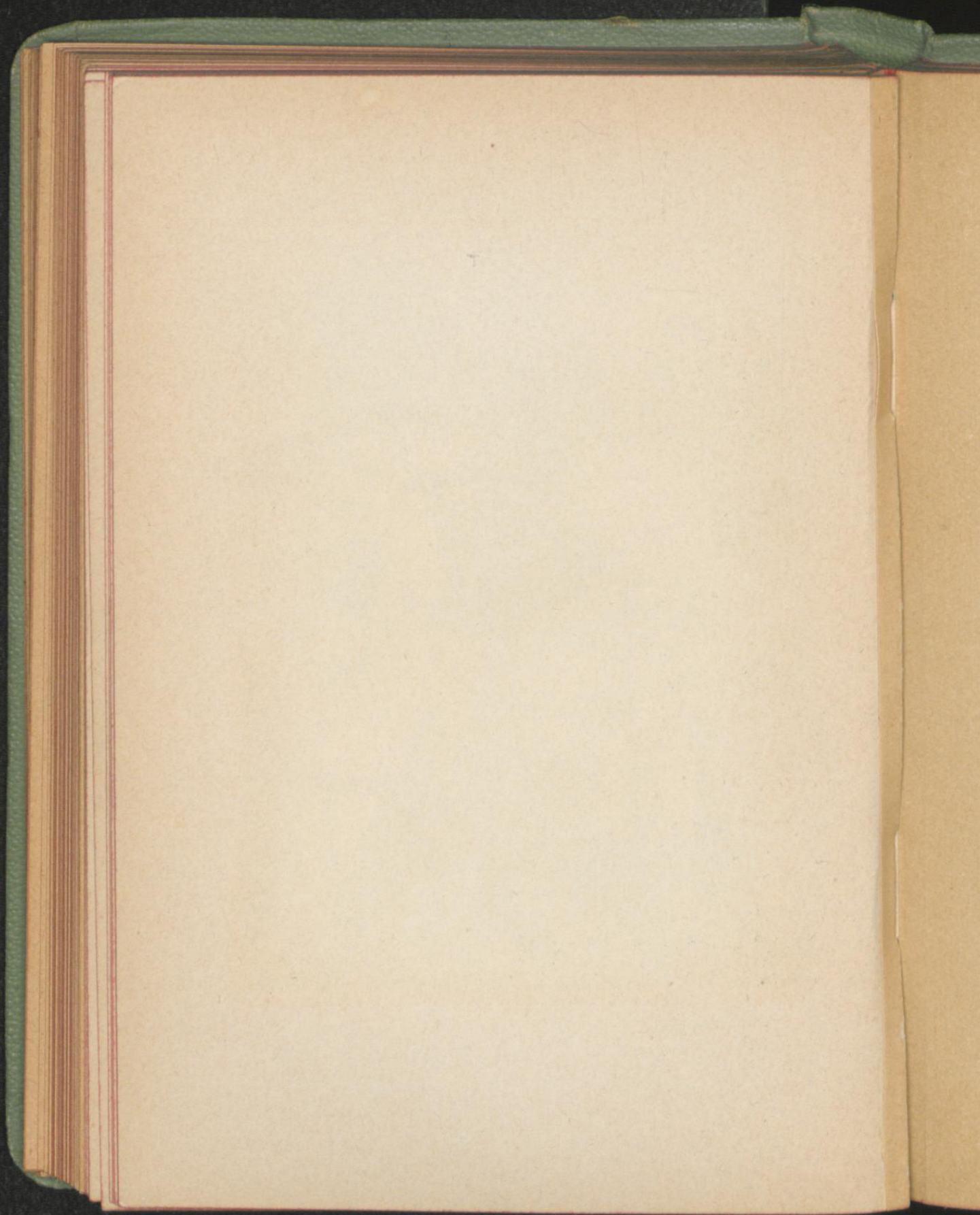


Tafel 10.



Eckstein & Stähle, Lith. Kunst-Anst., Stuttgart

a. Rötlicher Ritterpilz, *Tricholoma rutilans* Schaeff. b. Schwefel-Ritterpilz, *Tricholoma sulphureus* Bull.

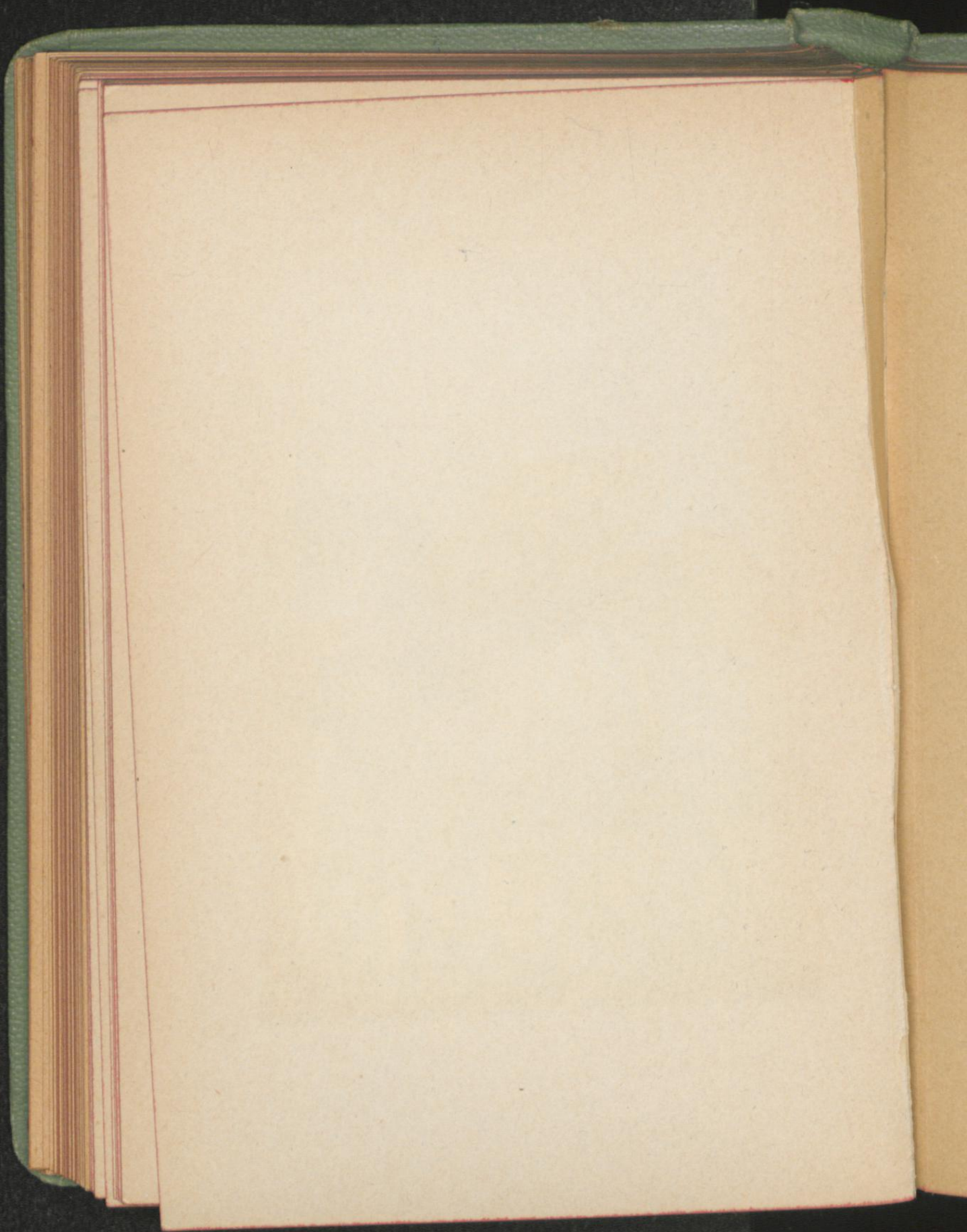


Tafel 11.



Eckstein & Stähle, Lith. Kunst-Anst., Stuttgart.

- a. Becher-Trichterling, *Clitocybe cyathiformis*
Bull. b. Lack-Trichterling, *Clitocybe laccata*
Scop.

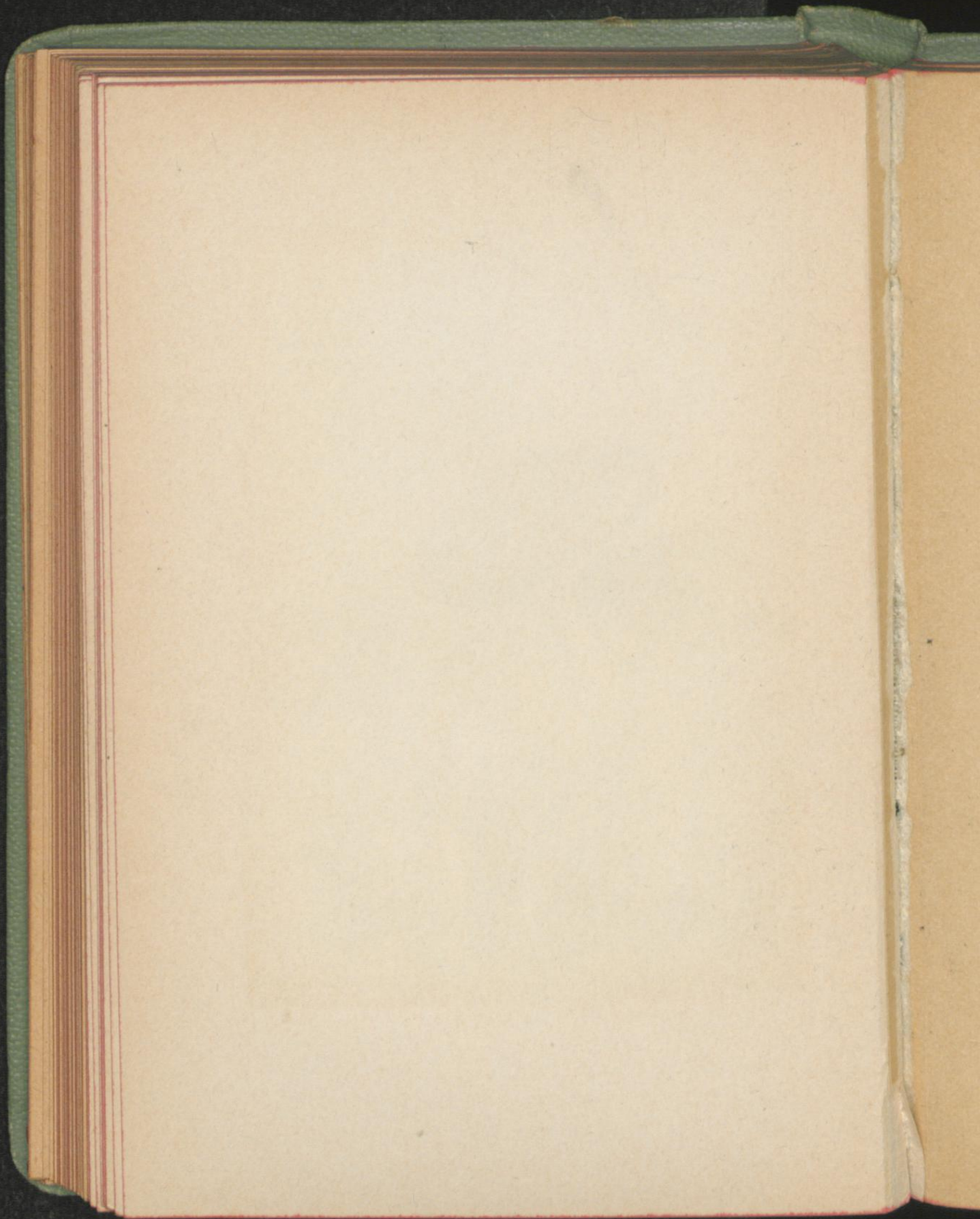


Tafel 12.



Eckstein & Stähle, Lith. Kunst Anst., Stuttgart.

a. Schmieriger Keilpilz, *Gomphidius glutinosus* Schaeff. b. Kegelhütiger Glaskopf, *Hygrophorus conicus* Scop.

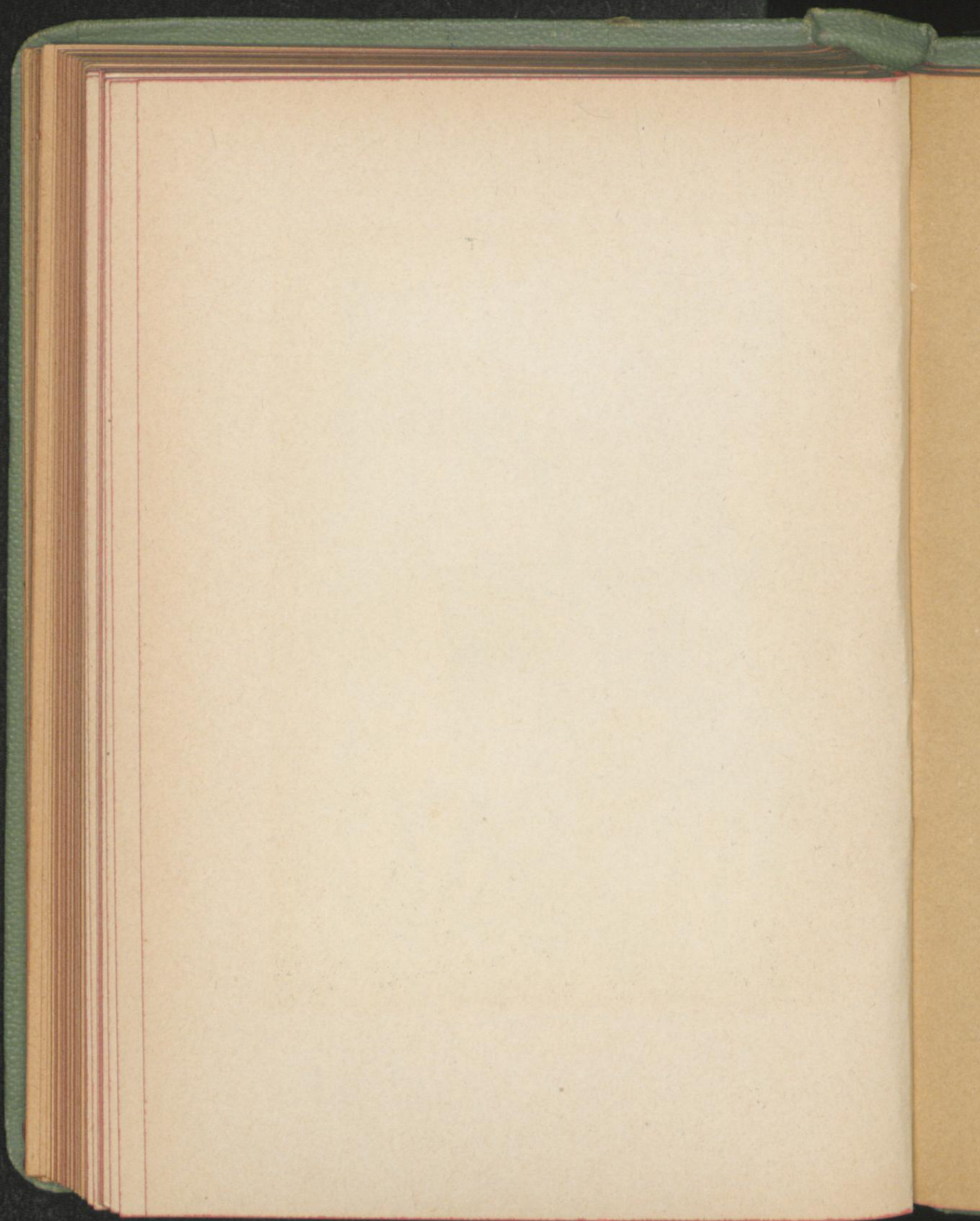


Tafel 13.



Eckstein & Stähle, Lith. Knast-Anst., Stuttgart.

- a. Lila-Dickfuss, *Cortinarius traganus* Fr.
b. Zimmet-Hautkopf, *Cortinarius cinnamomeus* L.

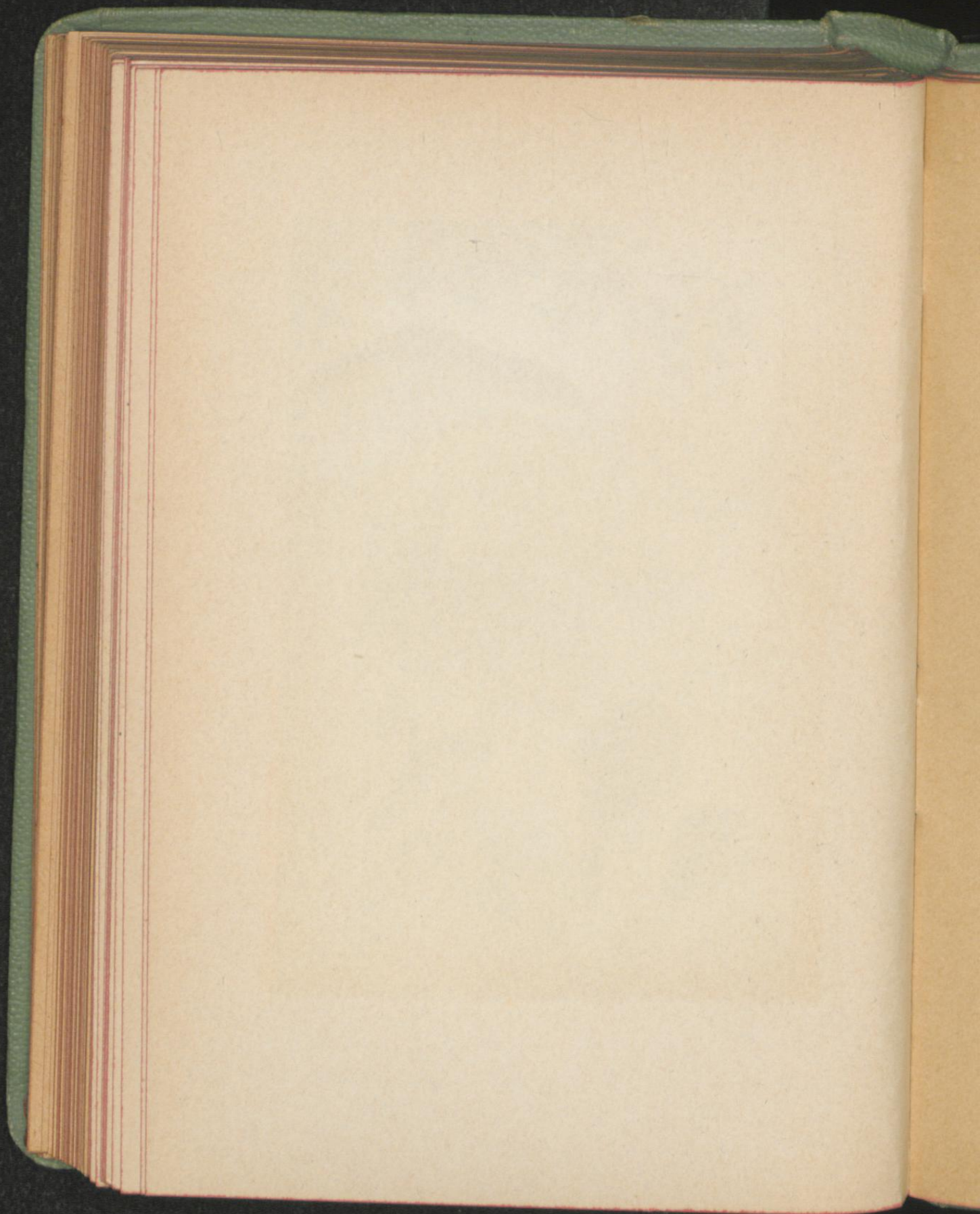


Tafel 14.



Eckstein & Stähle, Lith. Kunst Anst., Stuttgart.

Sparriger Schuppenpilz, *Pholiota squarrosa*
Müll.

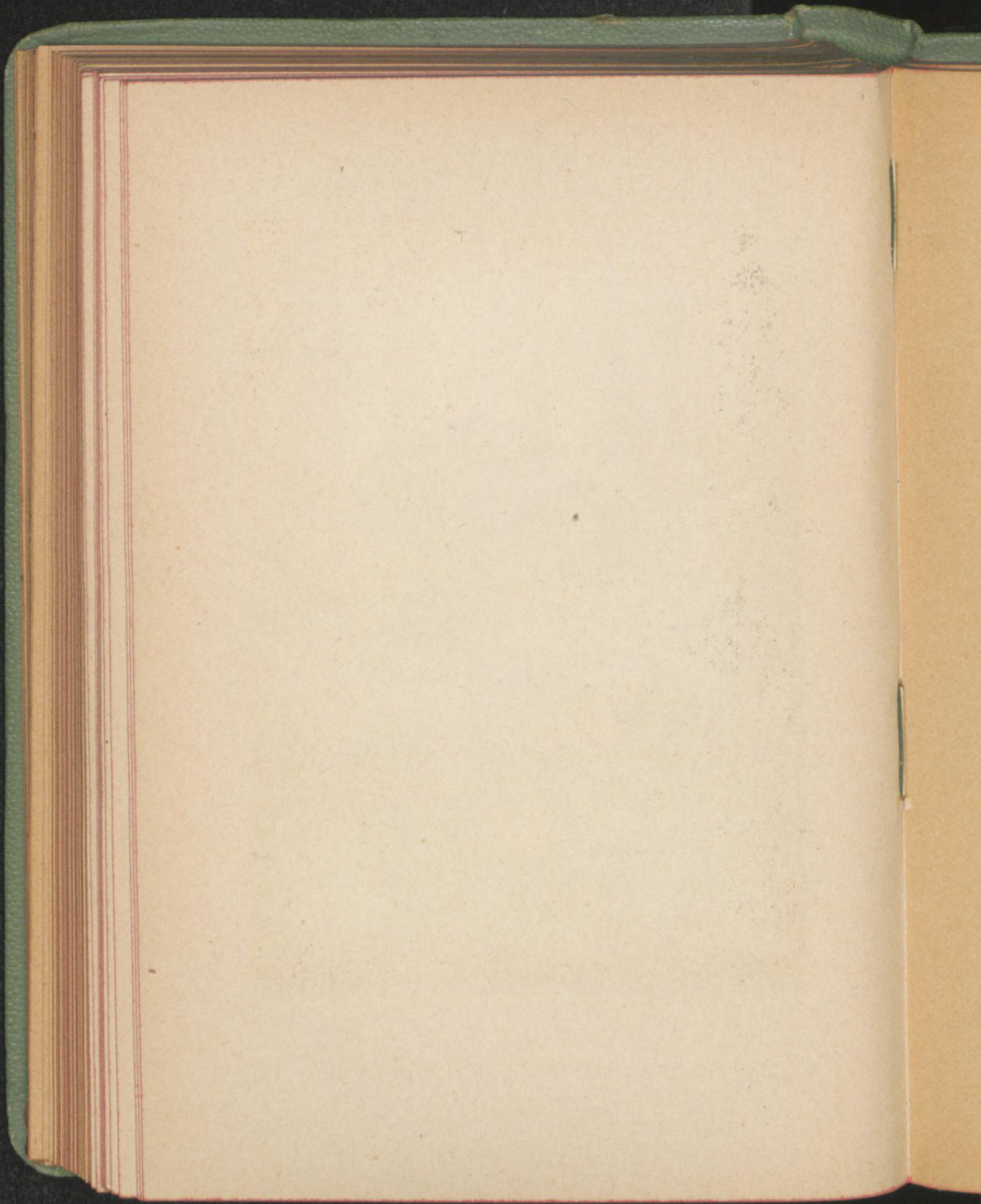


Tafel 15.



Eckstein & Stahle, Lith. Kunst Anst., Stuttgart.

Büscheliger Schwefelkopf, *Hypholoma fasciculare* Huds.

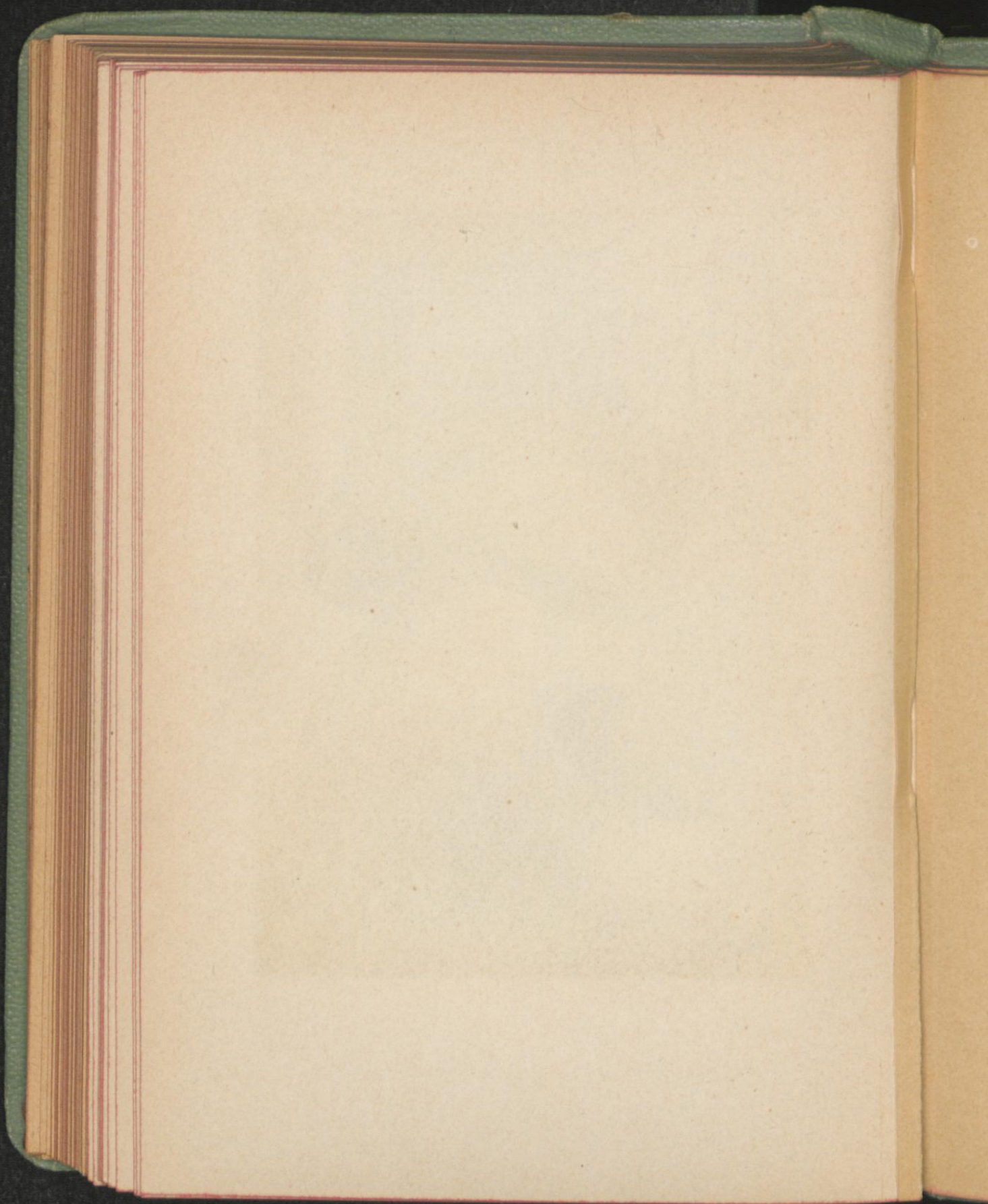


Tafel 16.



Eckstein & Stahl, Lith. Kunst Anst., Stuttgart.

Satanspilz, *Boletus satanas* Lenz.

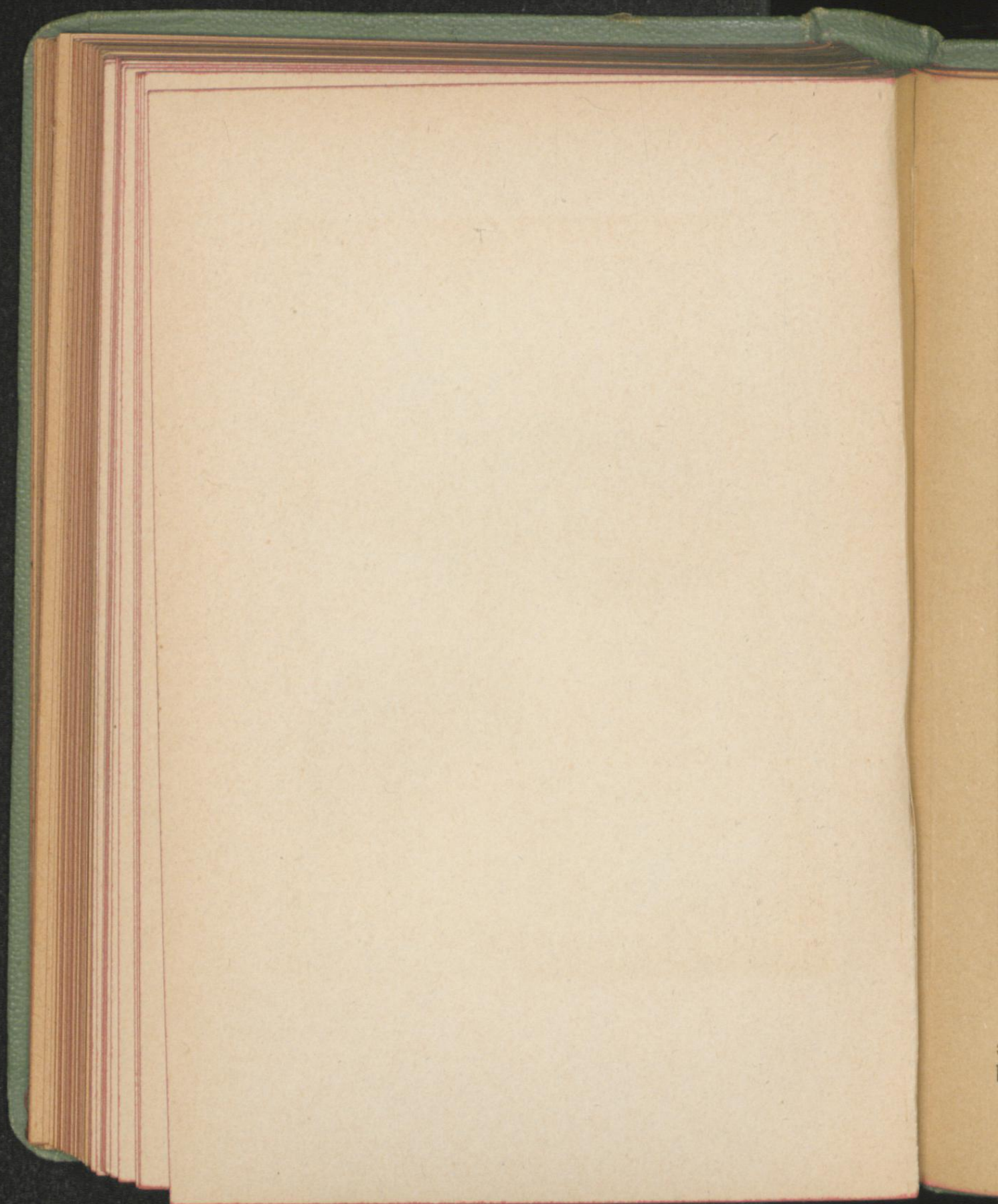


Tafel 17.



Eckstein & Stahle, Lith. Kunst. Anst., Stuttgart

Hexenpilz, *Boletus luridus* Schaeff.

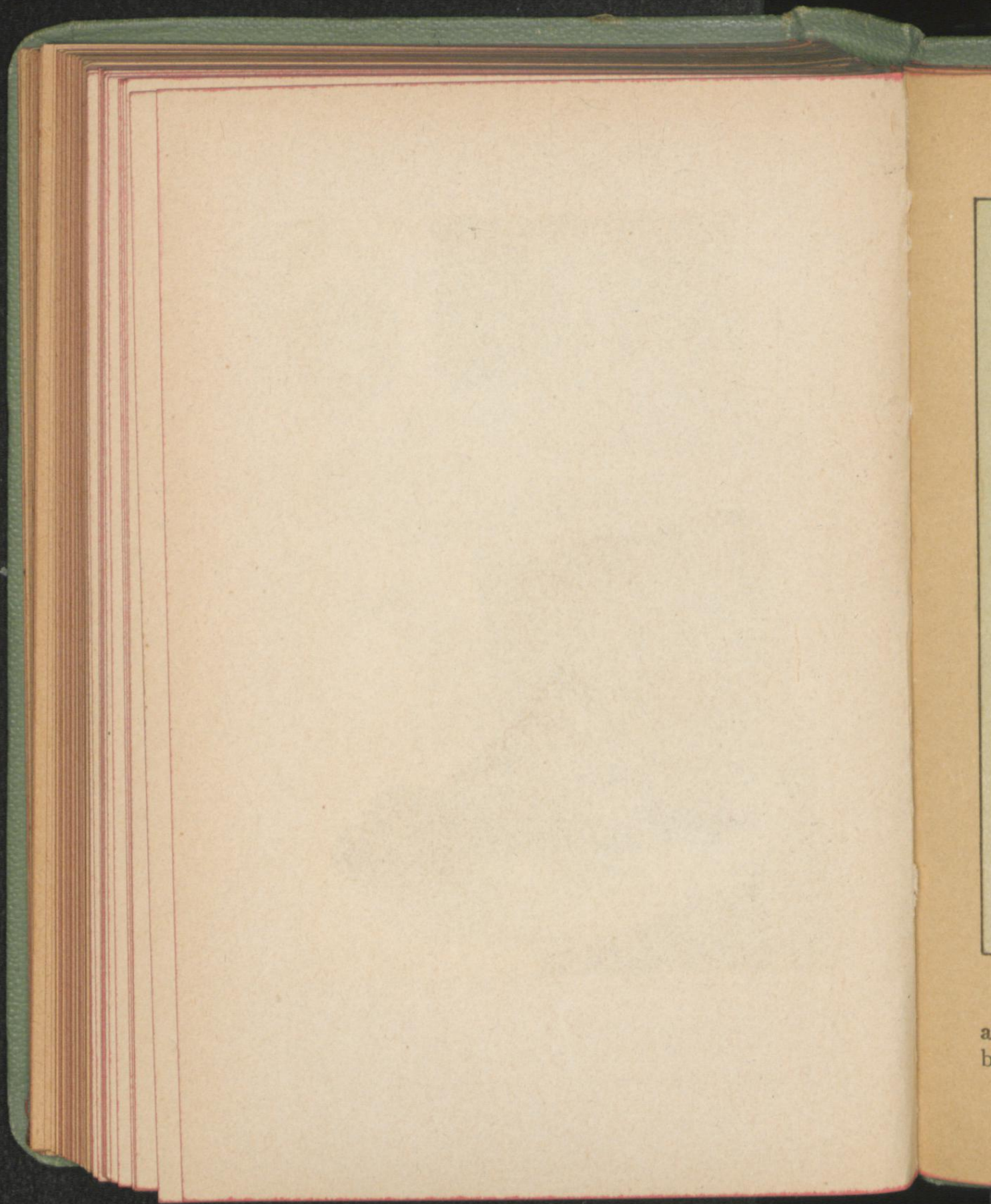


Tafel 18.



Eckstein & Stähle, Lith. Kunst Anst., Stuttgart.

- a. Steifzottiger Porling, *Polyporus hispidus* Fr.
b. Falscher Feuerpilz, *Polyporus ignarius* L.



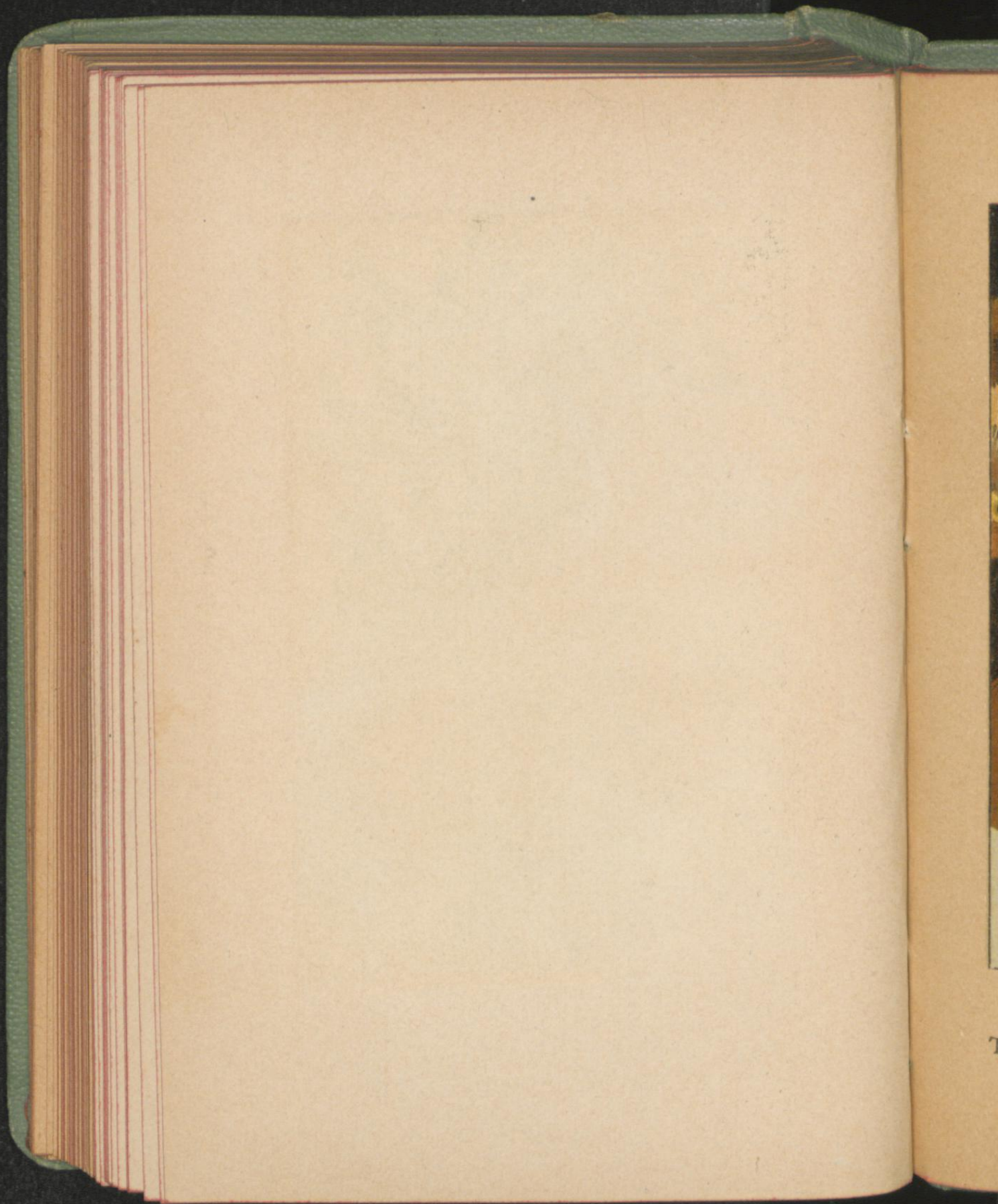
a
b

Tafel 19.



Eckstein & Stähle, Lüh. Kunst-Anst., Stuttgart.

- a. Eichen-Wirrpilz, *Daedalea quercina* Pers.
b. Herber Seitenstiel, *Panus stypticus* Bull.

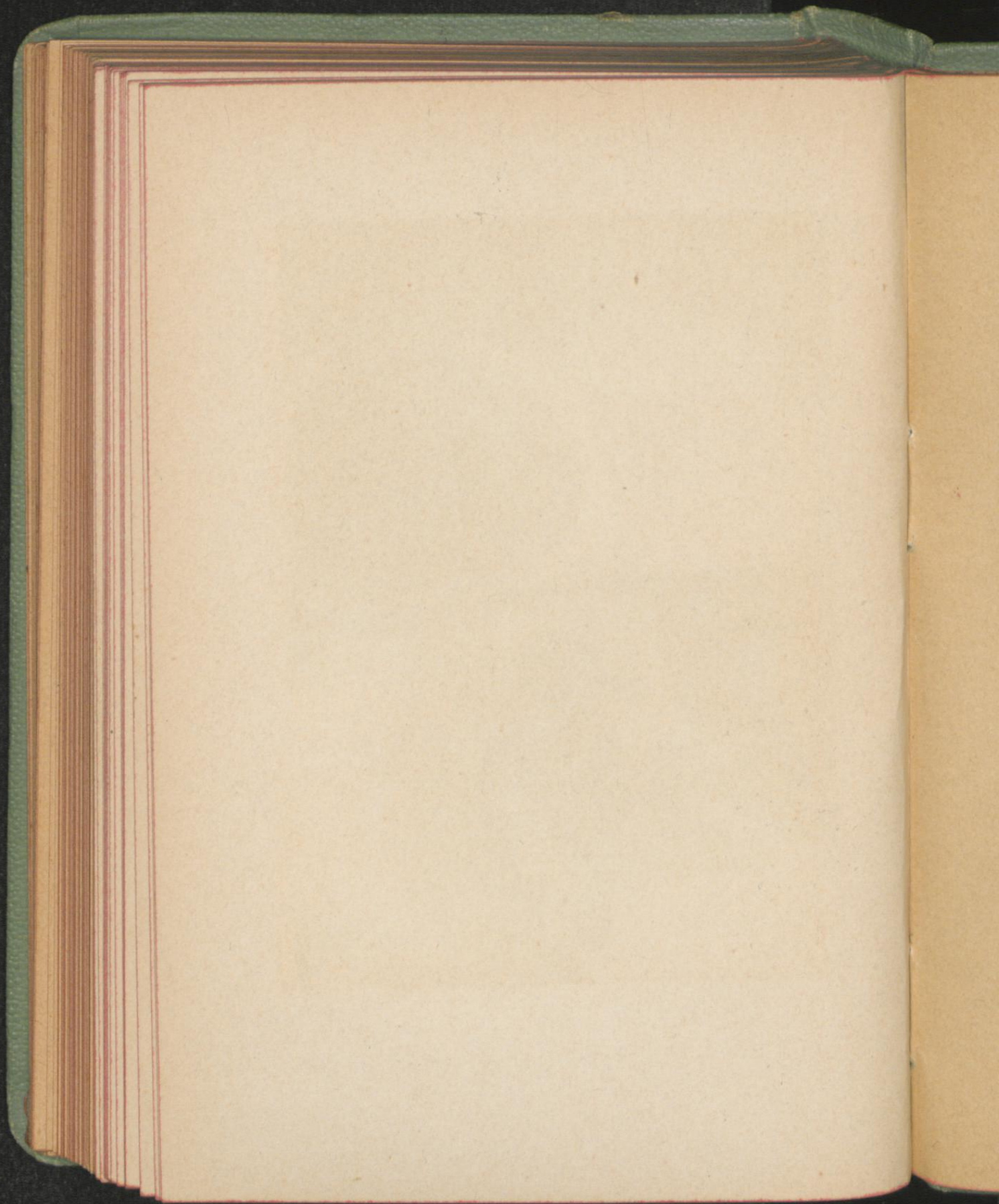


Tafel 20.



Eckstein & Stähle, lith. Kunst-Anst., Stuttgart.

Thränender Hausschwamm, *Merulius lacrymans* Schum.

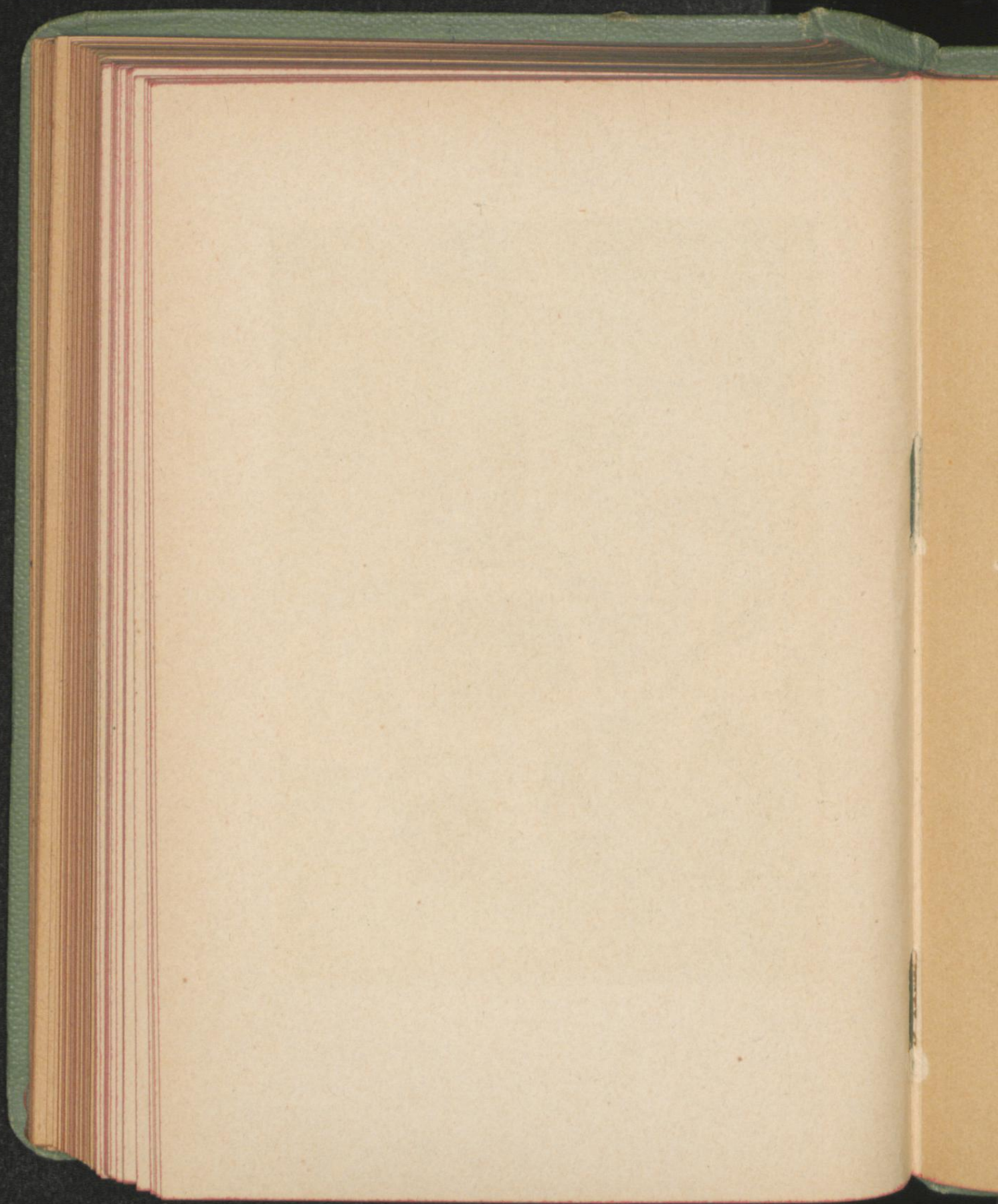


Tafel 21.



Eckstein & Stähle, Lith. Kunst-Anst., Stuttgart.

- a. Filzhütiger Stachelpilz, *Hydnum tomentosum* L. b. Trichter-Stachelpilz, *Hydnum cyathiforme* Bull.

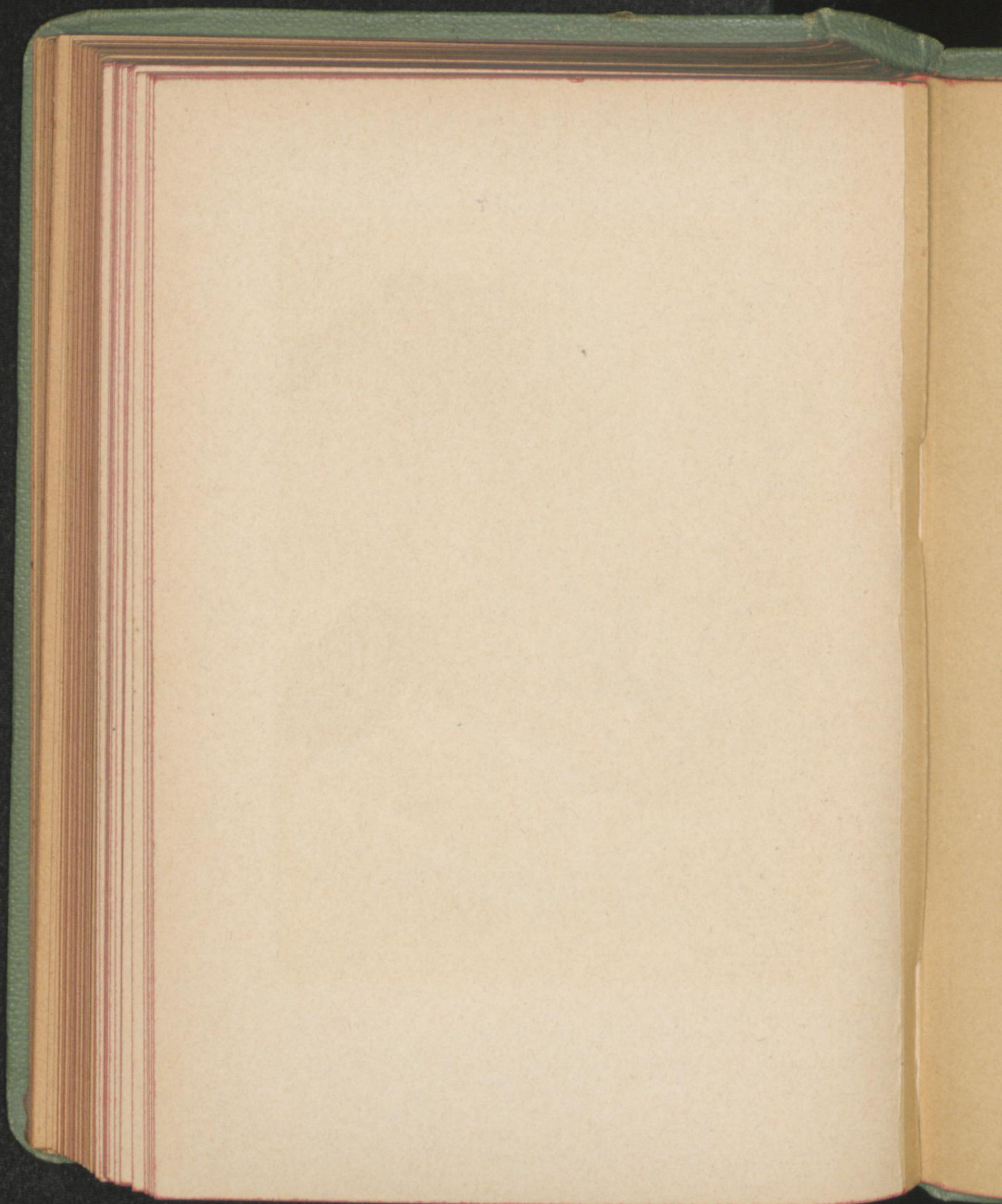


Tafel 22.



Eckstein & Stahl, Lith. Kunst. Anst., Stuttgart

a. Totentrompete, *Craterellus cornucopioides*
Pers. b. Klebriges Schönhorn, *Calocera vis-*
cosa Fr.

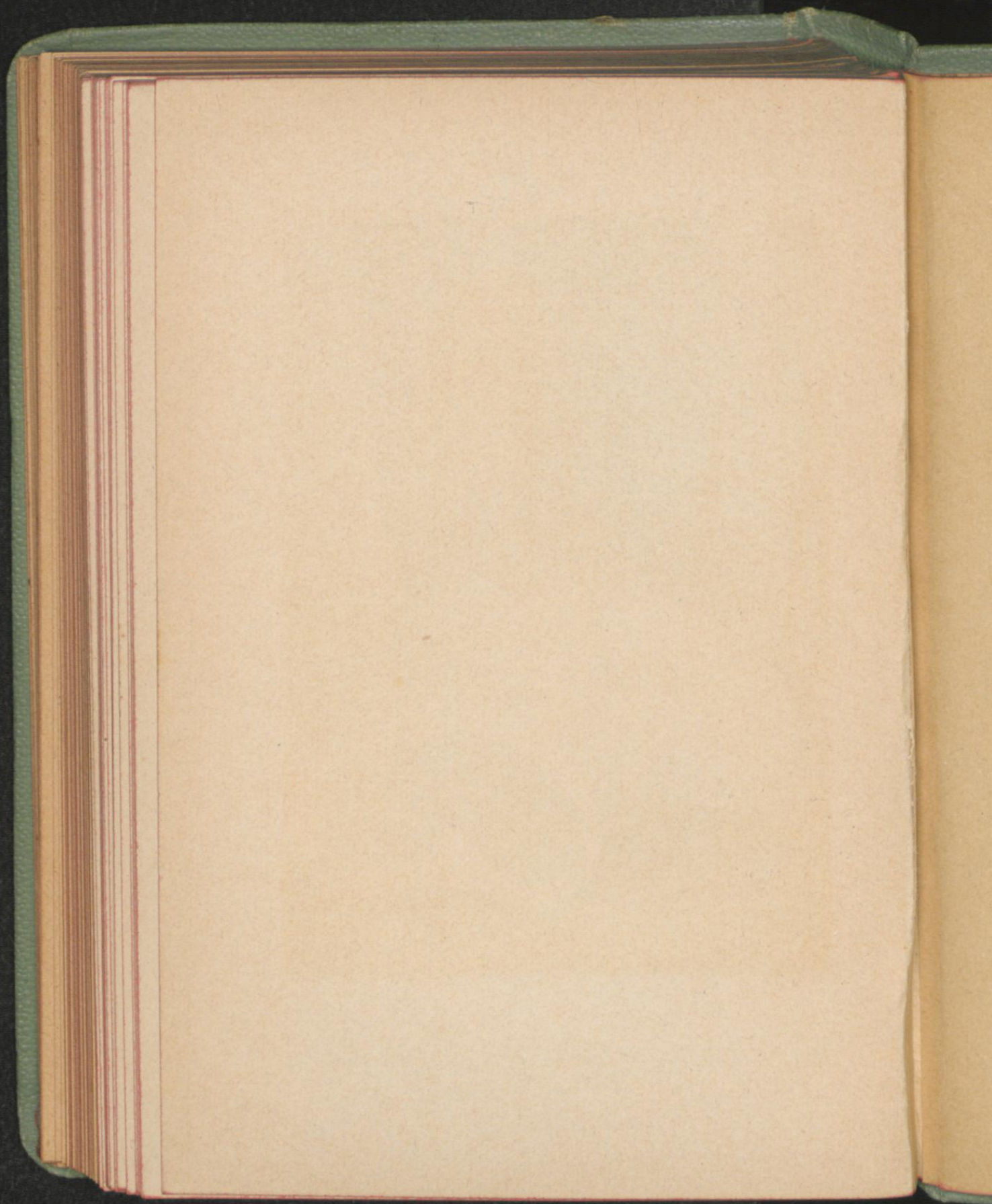


Tafel 23.



Eckstein & Stähle, Lith. Kunst-Anst., Stuttgart.

Gemeiner Kartoffelbovist, *Sclerotheca vul-*
gare Fr.

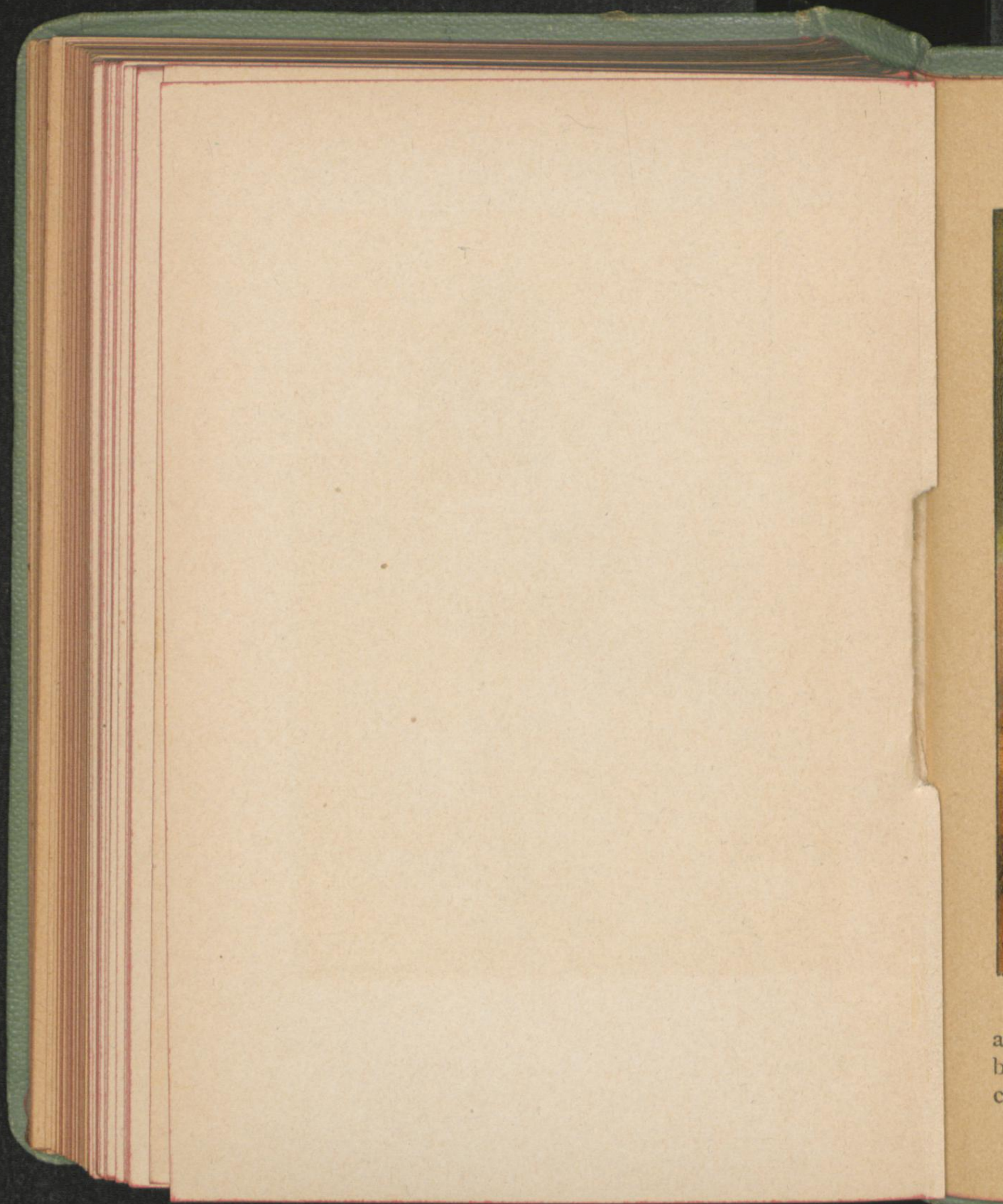


Tafel 24.

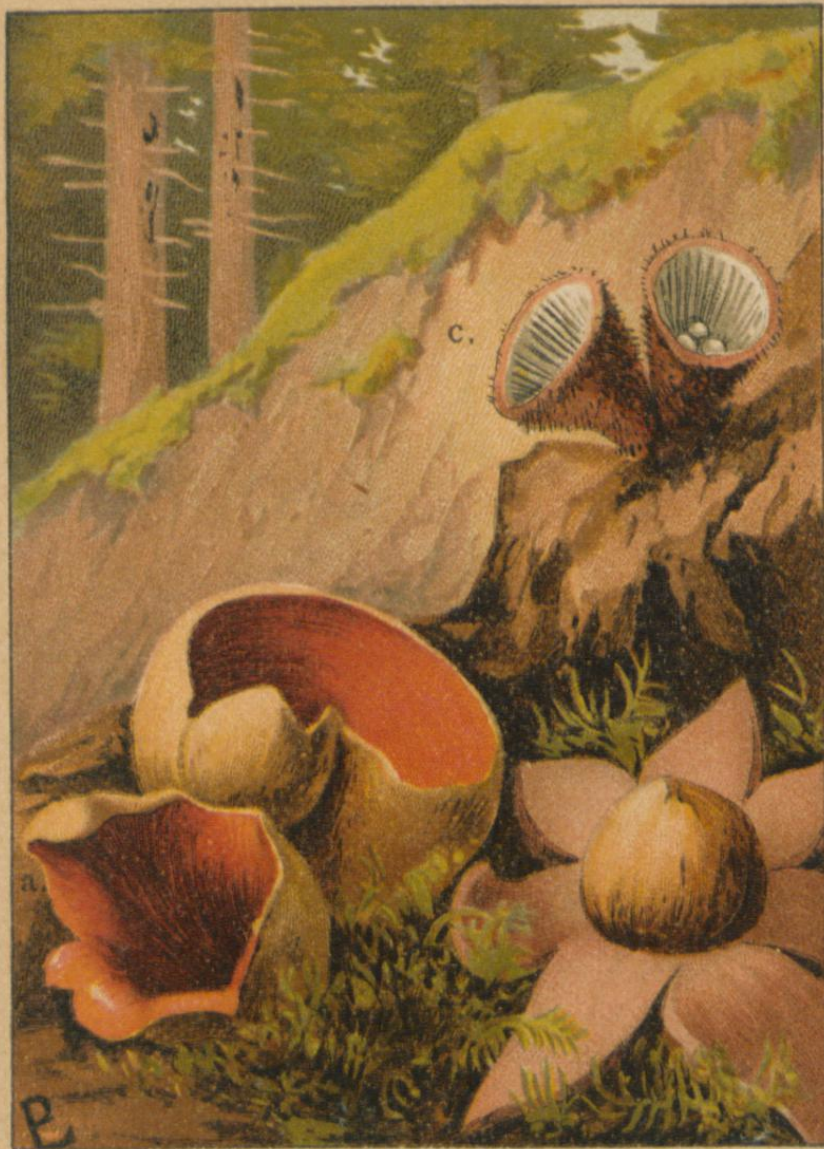


Eckstein & Stähle, Lith. Kunst-Anst., Stuttgart.

Stinkende Gichtmorchel, *Phallus impudicus* L.



Tafel 25.



Eckstein & Stahle, Lüt. Kunst-Anst., Stuttgart.

- a. Orange-Becherpilz, *Peziza aurantia* Oedr.
b. Wetter-Erdstern, *Geaster hygrometricus* L.
c. Gestreiftes Nestchen, *Nidularia striata* Willdr.

