



Fig. I.

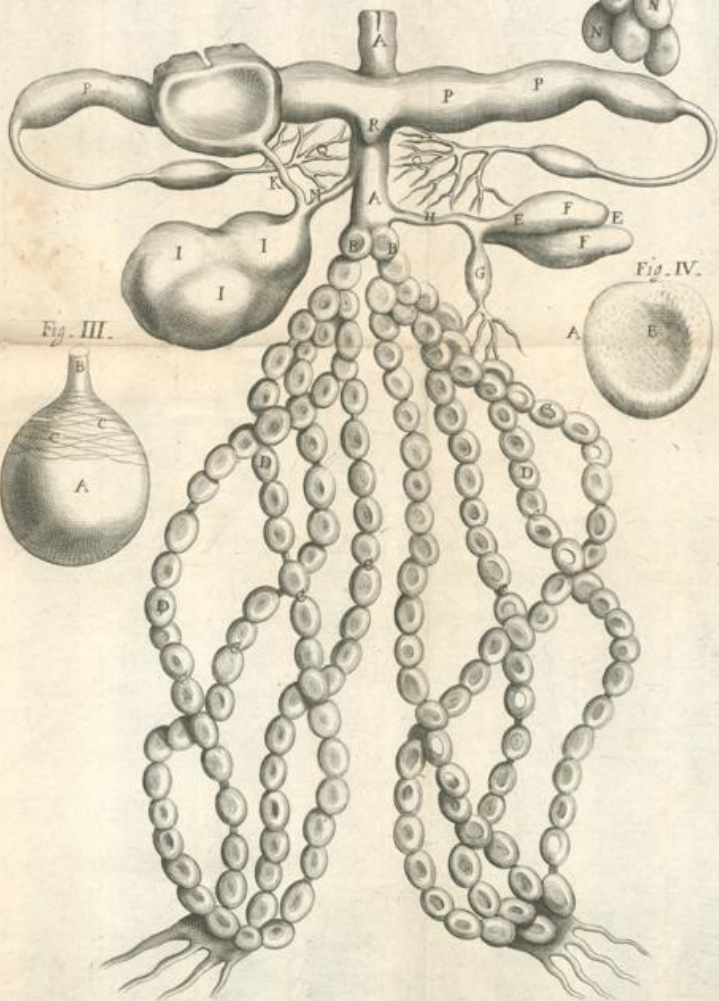


Fig. III.



Fig. IV.

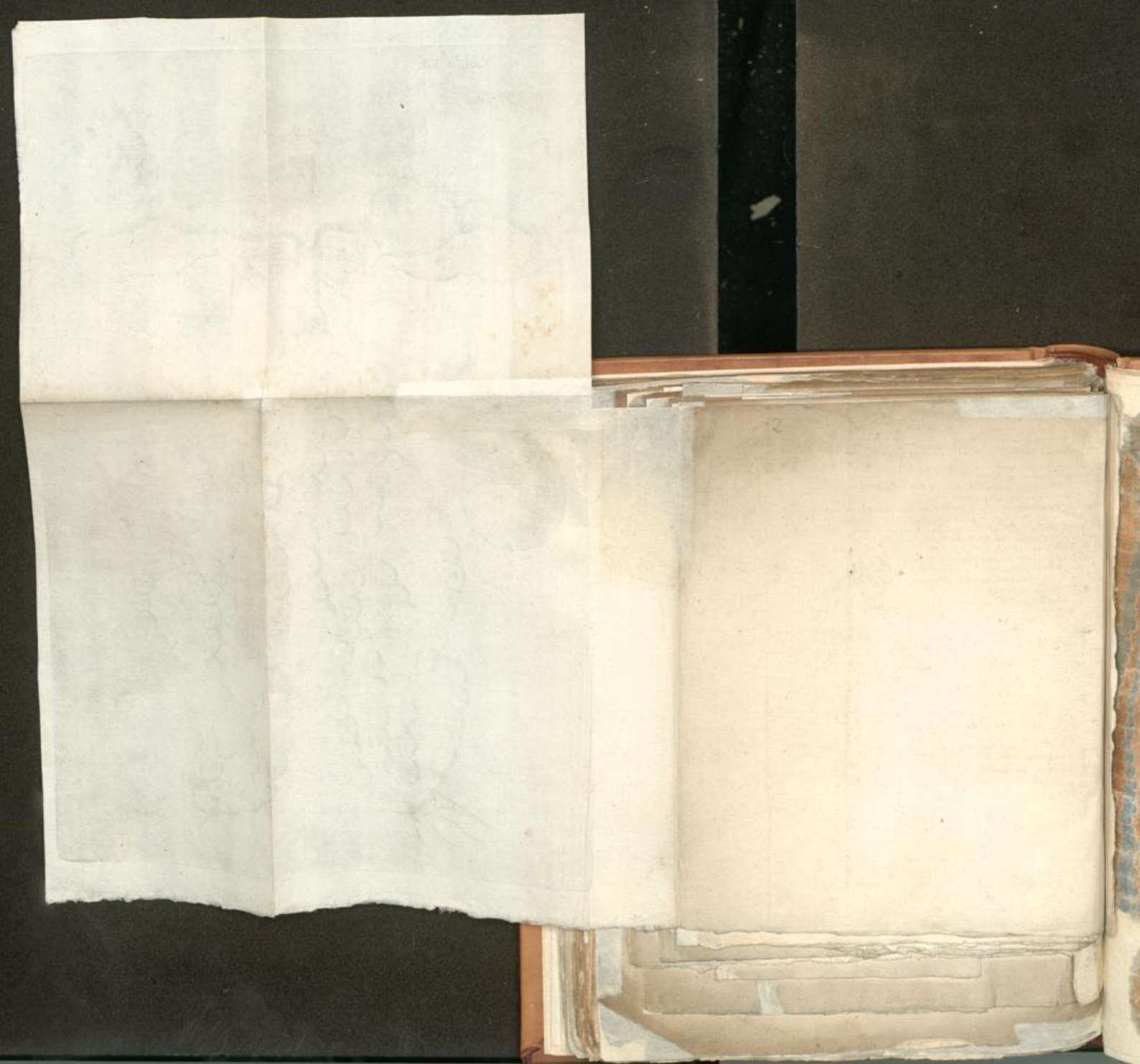


A. Truncus arterialis  
 B. Arteria pulmonalis in situ  
 C. Substantia elastica in arteria pulmonali  
 D. Arteria  
 E. Arteria  
 F. Arteria  
 G. Arteria  
 H. Arteria  
 I. Arteria  
 K. Arteria  
 L. Arteria  
 M. Arteria  
 N. Arteria  
 O. Arteria  
 P. Arteria  
 Q. Arteria  
 R. Arteria  
 S. Arteria

Fig. II

Fig. III

Fig. IV



12

