

Gesang der Schwalben.

In Musik gesetzt von G. d'Alquen.

Zu dem Spiele: Die Auswanderer.

Andante.



1. Hin	ii = ber	Thal und	Hii = gel	trägt
2. heil = gen	Mee = res	Wo = gen,	sie	
3. tau = chen	blau = e	Rii = sten	aus	
4. wohl, wir	feh = ren	wie = der	auf	



1. uns	der leicht = te	Flü = gel	ins rei = ne	Him = mels =	
2. kom = men	nun ge =	zo = gen,	wir drin = gen	fest vor =	
3. ö = den	Was = ser =	wii = sten	in wun =	der = ba = rer	
4. se =	geln = dem	Ge =	fi = der;	lebt wohl	zu tau = send



1. blau, ins rei = ne Him = mels = blau. Die fer = nen
 2. an! Wir drin = gen feck vor = an! Ei = lan = de
 3. Pracht, in wun = der ba = rer Pracht. Es weh = en
 4. Mal! Lebt wohl viel tau = send Mal! Die wir jetzt

1. Strö-me pran- gen gleich lich = ten Sil = ber = schlan-gen in
 2. dort schon flim-mern, als Mar = ken uns sie schim-mern auf
 3. mil = de Lüf = te, es kün = den Blu = men = düf = te, daß
 4. schei = den müs = sen, wir wol = len euch be = grü = ßen beim

cresc.

1. wei = ter grü = ner Au, in wei = ter grü = ner Au, in
 2. schran-ken = lo = ser Bahn! Auf schran = ken = lo = ser Bahn! auf
 3. neu = er Lenz er = wacht! Daß neu = er Lenz er = wacht! Daß
 4. er = sten lin = den Strahl! Beim er = sten lin = den Strahl! Beim

p



1. wei = ter grü = ner Au!
2. schran = ken = lo = ser Bahn!
3. neu = er Lenz er = wacht!
4. er = sten lin = den Strahl!



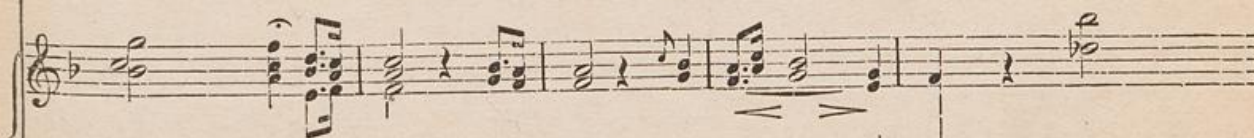
2. Des
3. Dort
4. Lebt



Adagio. Schluß der vierten Strophe.



Lebt wohl, lebt wohl zu tau = send Mal!



The musical score on page 56 consists of three staves. The top staff is a treble clef staff with a key signature of one flat (B-flat) and a common time signature (C). It contains a whole rest followed by a double bar line. The middle staff is a treble clef staff with a key signature of one flat and a common time signature. It begins with a quarter rest, followed by two trills (tr) on the notes G4 and A4. The rest of the staff contains a series of chords and melodic fragments. The bottom staff is a bass clef staff with a key signature of one flat and a common time signature. It features a continuous eighth-note accompaniment pattern. A dynamic marking of *pp* (pianissimo) is present in the final measure of the bottom staff. The page is aged and shows some foxing and a horizontal line with a double-headed arrow in the center.

1111

1111

1111

1111

1111

1111

1111

1111

1111

1111

1111

1111

1111

1111

1111

