

Uebersichtsplan
der
Stadtgemeinde St. Gallen

nach einer Reduktion & Cataster-Aufnahme v. 1843

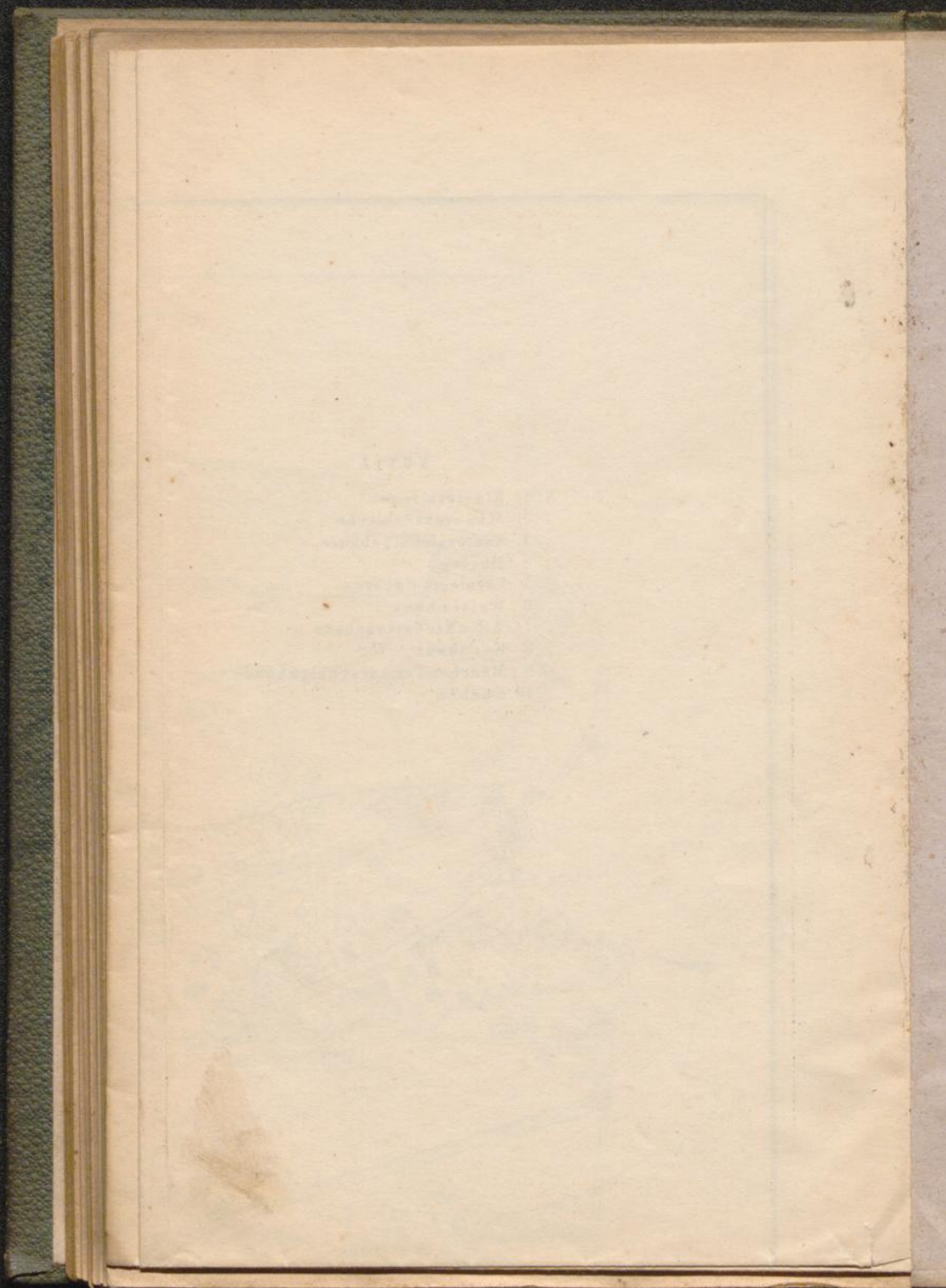
Revidirt v. J. Balzer 1875.

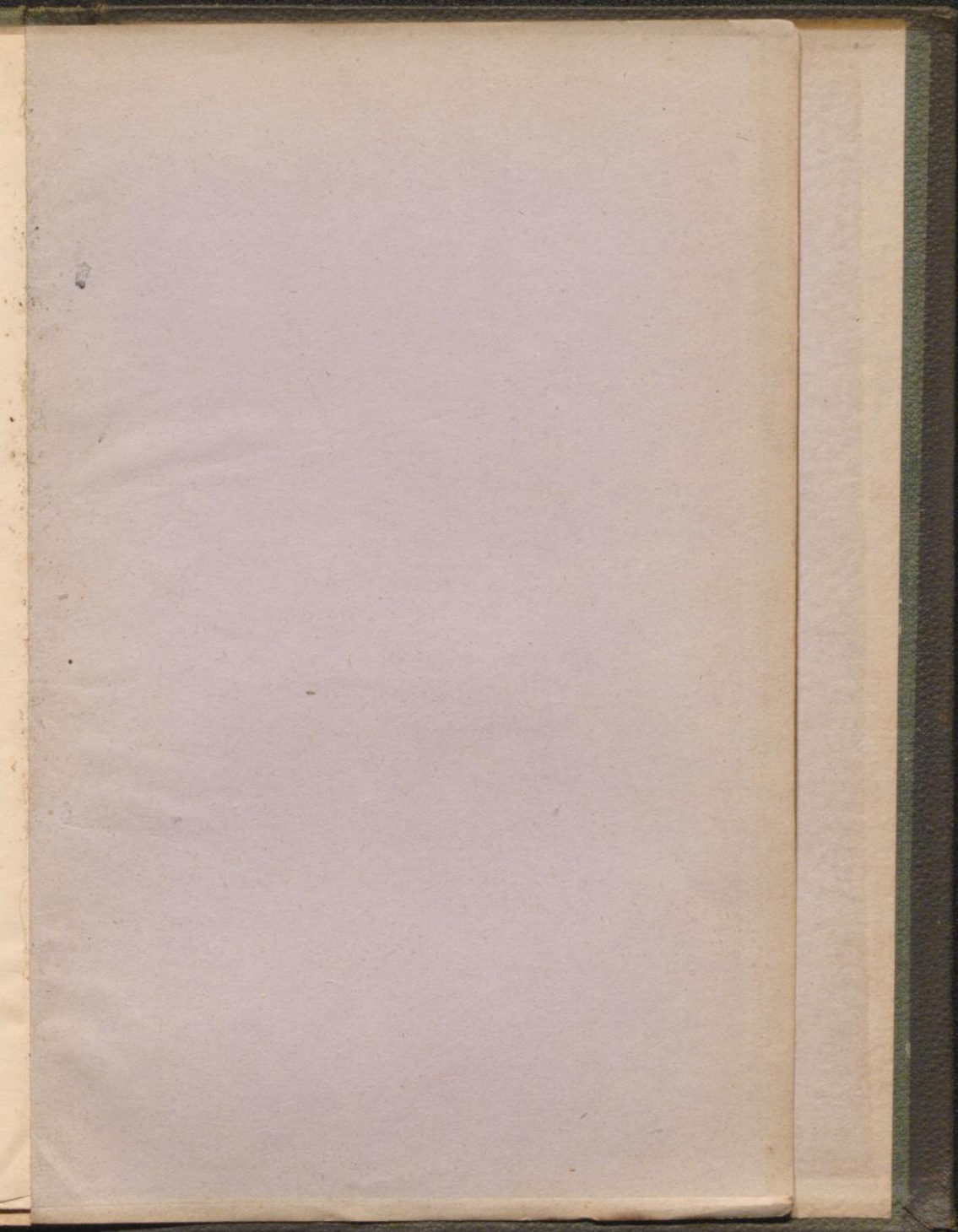
XXXII

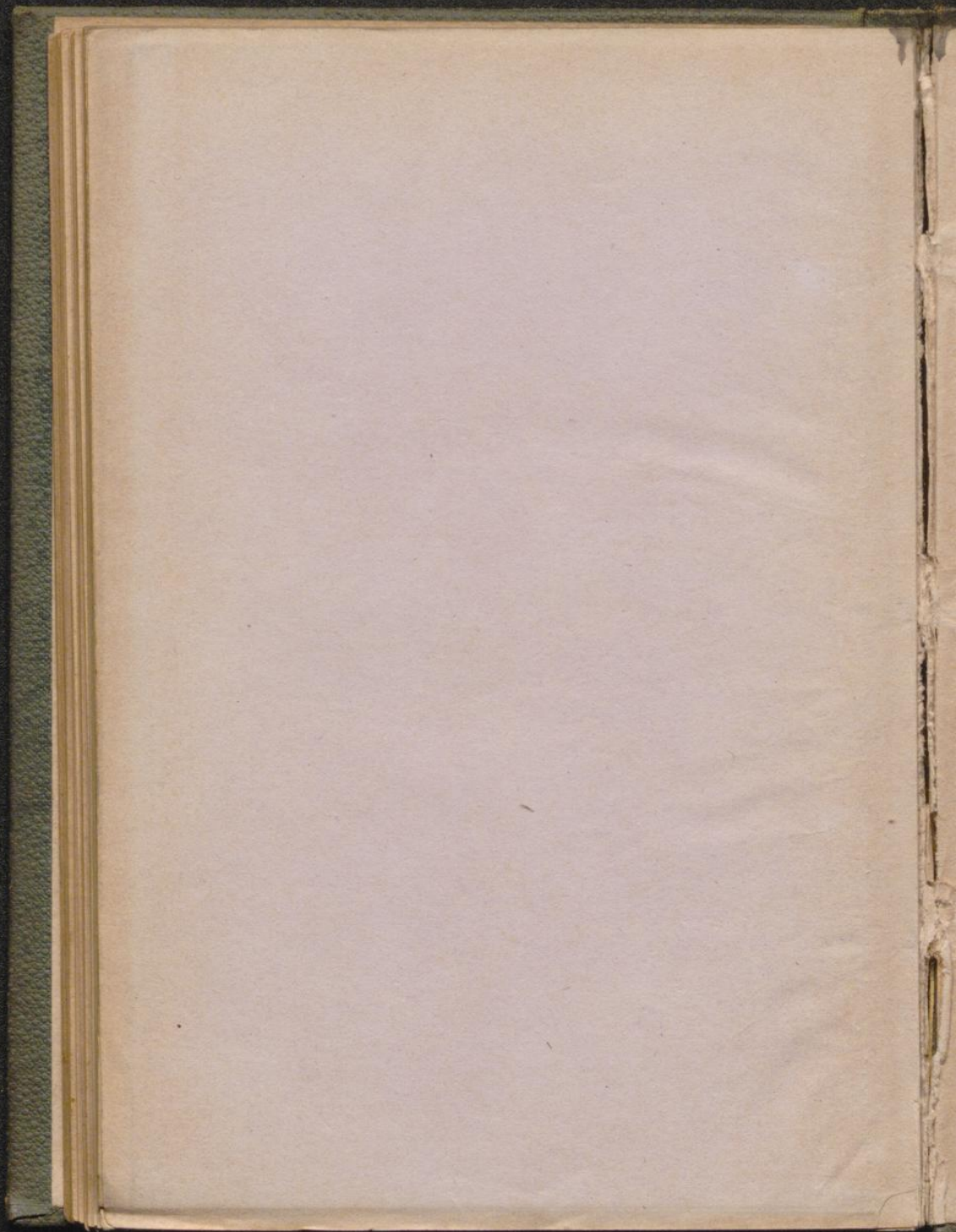
- 1. Klosterkirche
- 2. Michaelskirche
- 3. Rathschulgasse
- 4. Bassein
- 5. Carolin-Campus
- 6. Waisenhaus
- 7. J. u. N. Niederlagehaus
- 8. Kaserne
- 9. Märlin-Primarschulgasse
- 10. Kuehen



Masstab 10000 Fusslinien







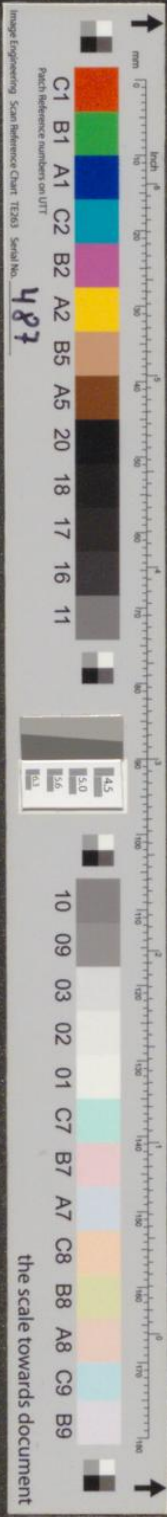


Image Engineering Scan Reference Chart 1233 Serial No.

487

the scale towards document