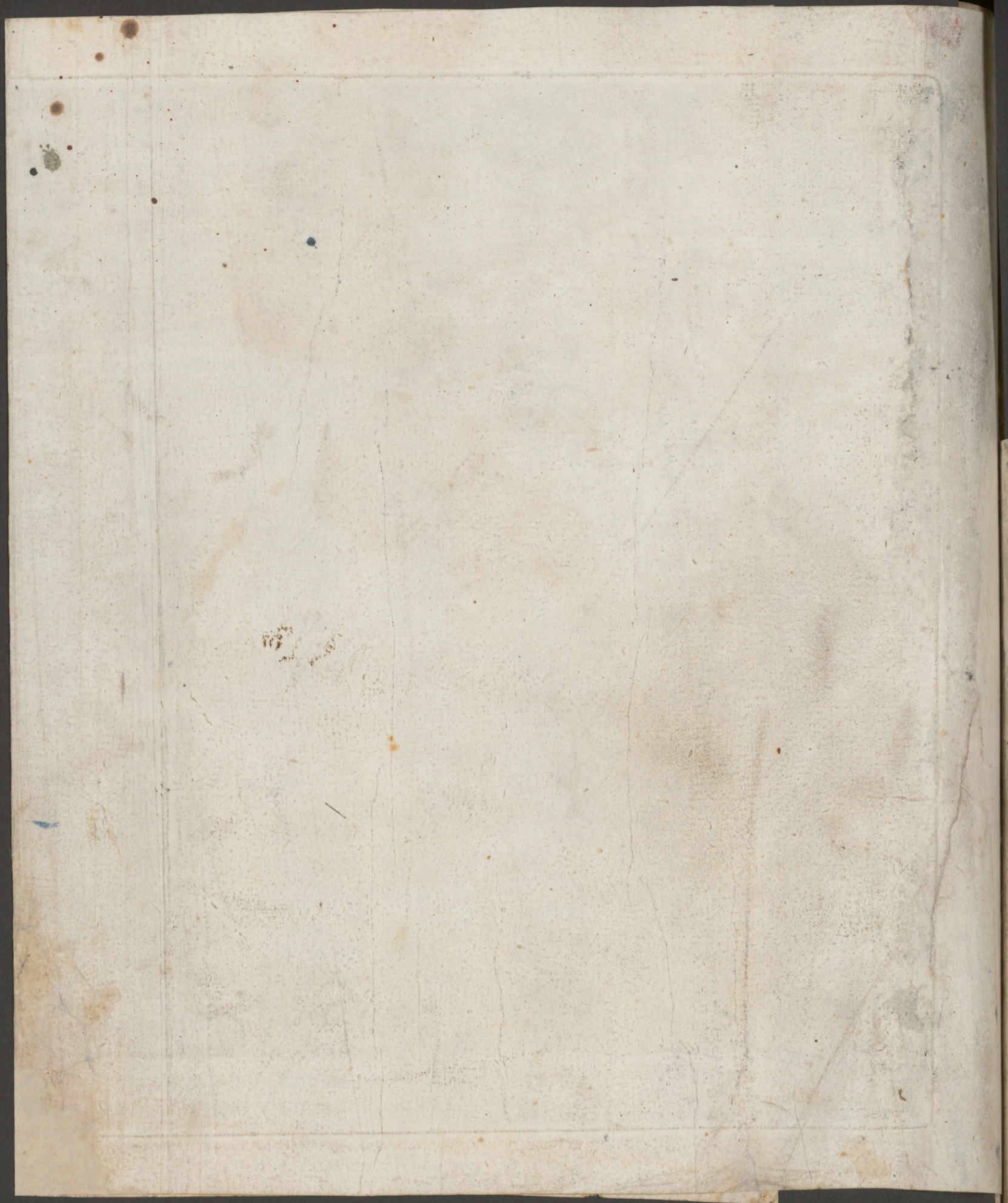




Louise Hondius del. C. van der Meer sculp.

S. C. M. vitor
petri stephani ju

Clariss. Prudentiss. Doctissimogq; viro D. Johanni Huijsen Jur. Licent. Ord. Zee
 VER recreans oculos, aureis leue murmur AQVAE
 Summo artis Chalco graphica Admiratori, amatoria
 nec non Rei Marinae apud Middelburgensis a Consilijs:
 D. Hondius M. D. C. I.
 A QVA Spectatur, sunt tibi cuncta, vide.

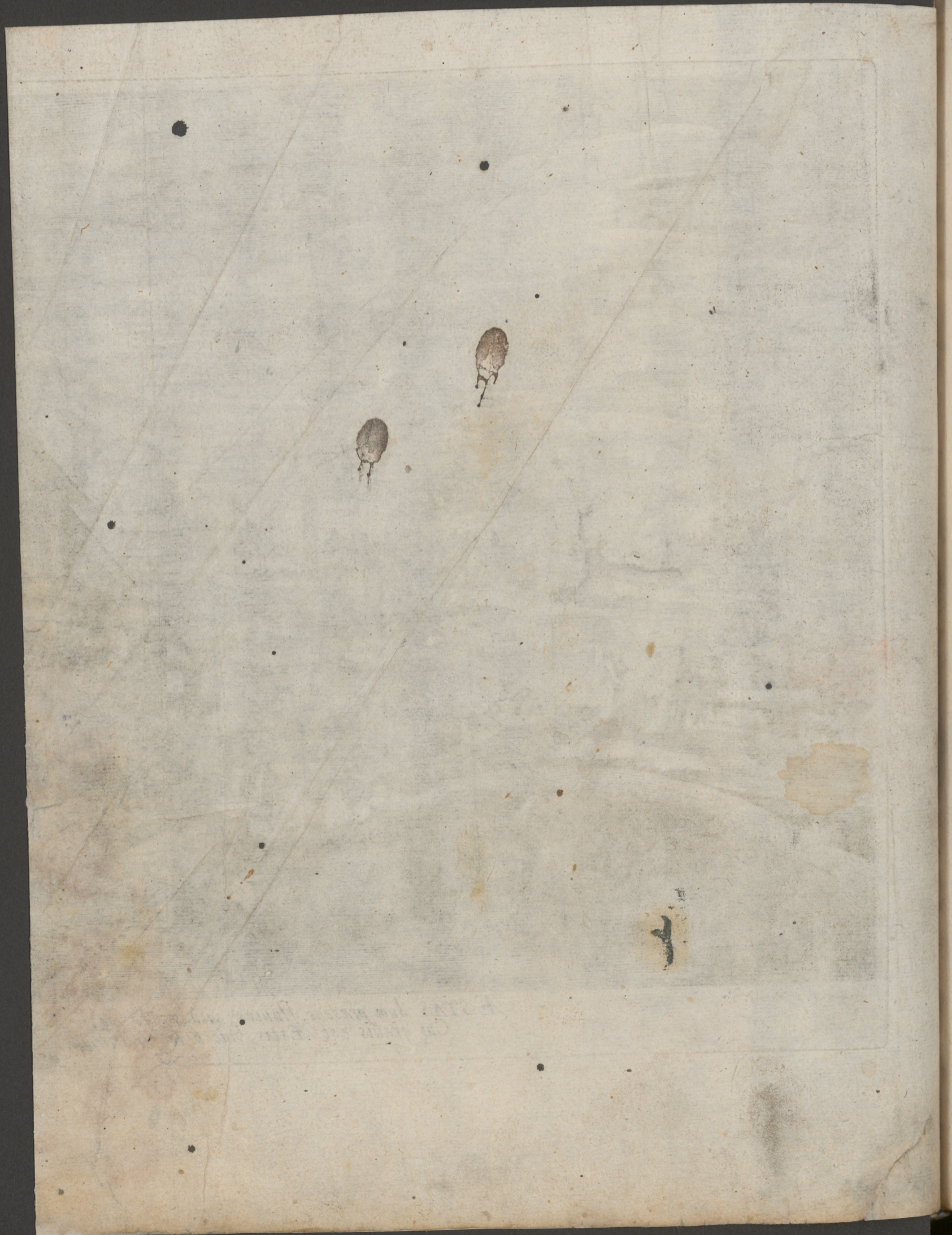






S. C. M. pictor. P. S. incidit. H. bond sculpsit excudit. 1601. Cum'

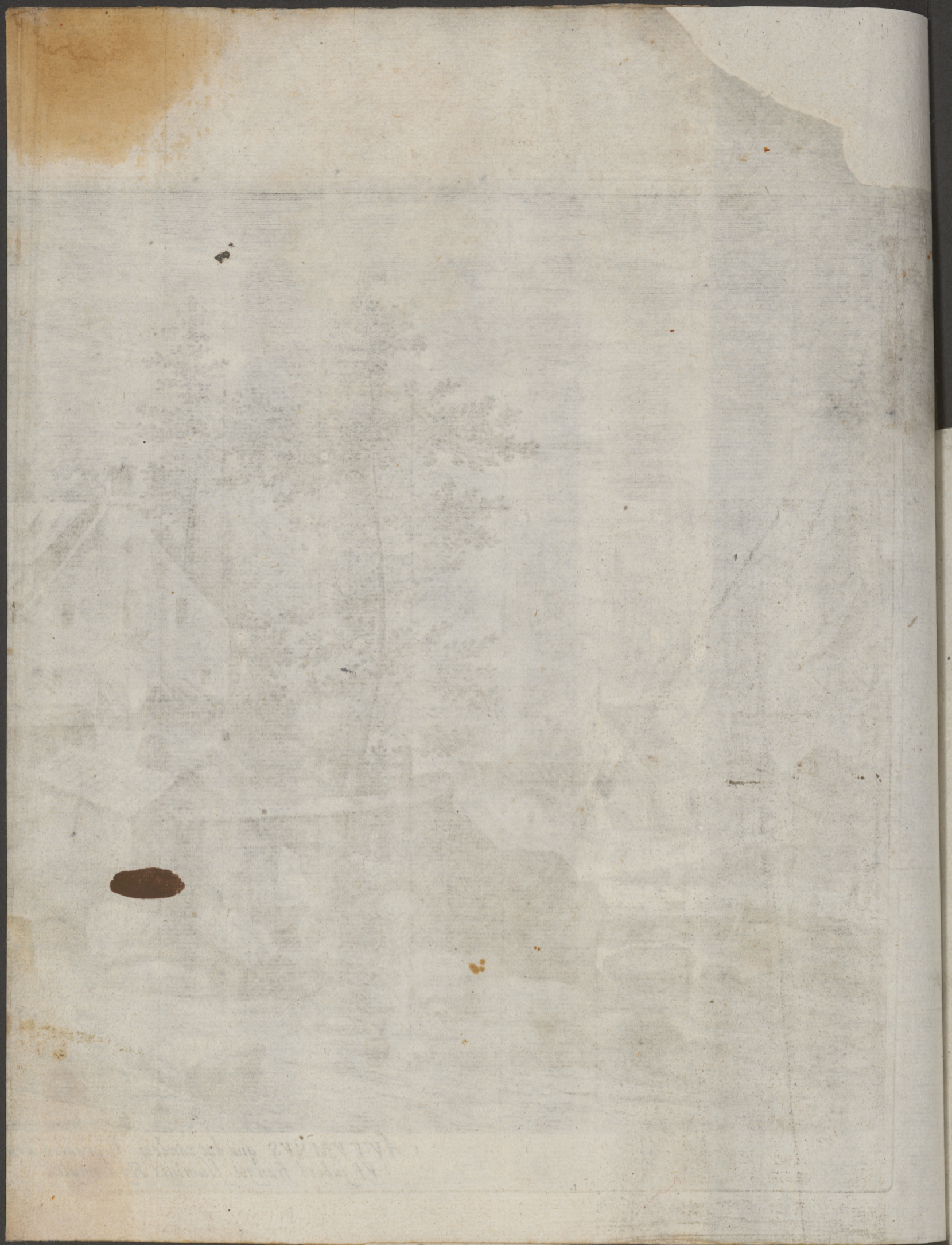
*ÆSTAS dum præsens, fluvios silvasq. fatiga,
Cui gravis est Æstas, huic bene fertur hiems.*







*AVTUMNVS qua dat tandem Cerealia dona,
VI subito frangit fluminis Hydromyle.*





S. C. M. pictor
P. S. Jansen

Hond sculpsit

Cum praeuli. Ord. gen. felder. Inf. germ. prou.

Hac HIEMIS facies. AQVA nunc constricta: Voluptas.
Hic aliqua est. Melius nil habet orbis AQVA.



S. C. M. pictor
P. S. Invenit

