





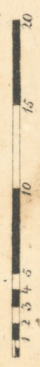


NORWEGEN

STIFT

- A. AGGERHIUS
- B. CHRISTIANSAND
- C. BERGEN
- D. DRONTHIEM

20 Deutsche Meilen 15 auf 1 Grad.



15 Schwedische Meilen 10 2/3 auf 1 Grad.



STIFT NORDLAND

KÖNIGREICH

DIE

N O R D

CHRISTIANSAND

BERGEN

CHRISTIANSUND

DRONTHIEM

SCHWEDEN

29

27

25

23

21

19

17

29

27

25

23

21

19

17

15

13

11

9

7

5

3

1

1

1

1

1

1

1

1

1

1

1

1

1

1

1

1

1

1

1

1

1

1

1

1

1

1

1

1

1

1

29

29

27

25

23

21

19

17

15

13

11

9

7

5

3

1

1

1

1

1

1

1

1

1

1

1

1

1

1

1

1

1

1

1

1

1

1

1

1

1

1

1

1

1

1

29

29

27

25

23

21

19

17

15

13

11

9

7

5

3

1

1

1

1

1

1

1

1

1

1

1

1

1

1

1

1

1

1

1

1

1

1

1

1

1

1

1

1

1

1

29

29

27

25

23

21

19

17

15

13

11

9

7

5

3

1

1

1

1

1

1

1

1

1

1

1

1

1

1

1

1

1

1

1

1

1

1

1

1

1

1

1

1

1

1

29

29

27

25

23

21

19

17

15

13

11

9

7

5

3

1

1

1

1

1

1

1

1

1

1

1

1

1

1

1

1

1

1

1

1

1

1

1

1

1

1

1

1

1

1

29

29

27

25

23

21

19

17

15

13

11

9

7

5

3

1

1

1

1

1

1

1

1

1

1

1

1

1

1

1

1

1

1

1

1

1

1

1

1

1

1

1

1

1

1

29

29

27

25

23

21

19

17

15

13

11

9

7

5

3

1

1

1

1

1

1

1

1

1

1

1

1

1

1

1

1

1

1

1

1

1

1

1

1

1

1

1

1

1

1

29

29

27







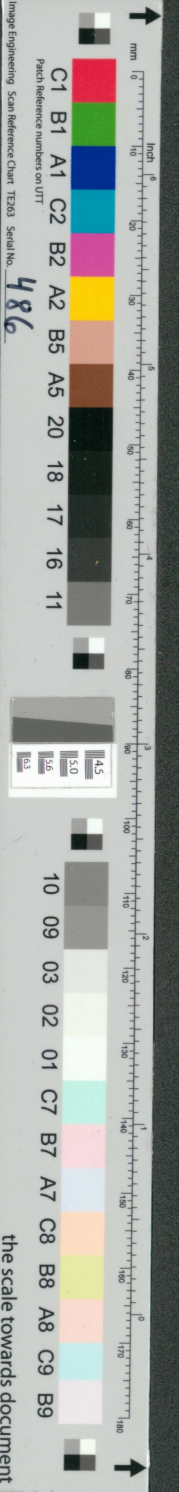


Image Engineering Scan Reference Chart T203 Serial No. 486

the scale towards document

