



Alfred de Siquemont

From a Drawing by Goussier from the original portrait by Michael Angelo Caravaggio in the National Museum at Paris





La Vallette.

Published by S^r J. Robinson London May 1804.





Portrait of Prince Ferdinand of Prussia Bailiff of Brandenburg.

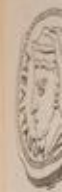
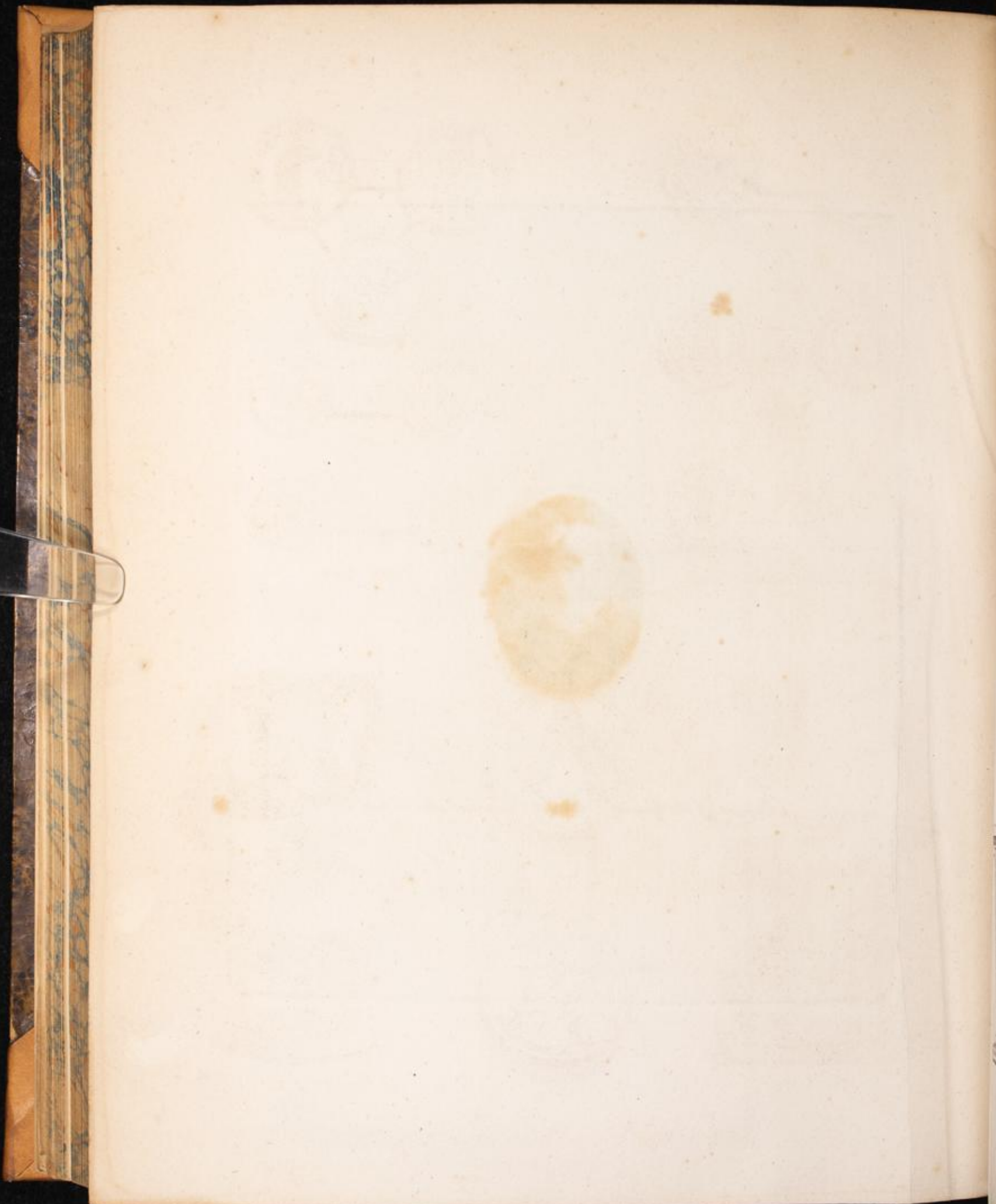
Printed by W. Johnston, London. No. 10. St. Paul's Church-Yard.

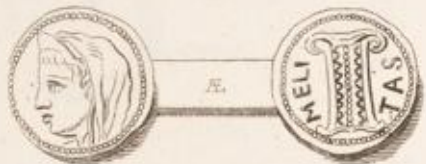
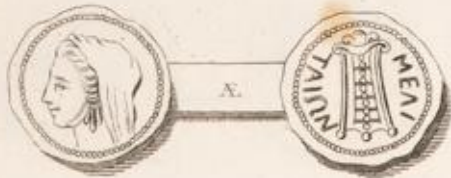




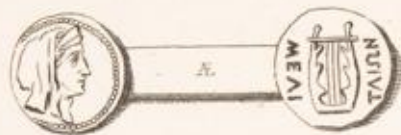
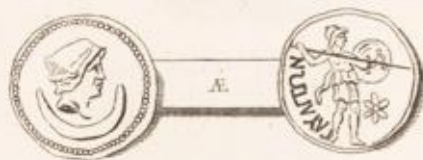
Portrait of the Grand Master Emmanuel de Rohan.

Published by J. H. Johnson, No. 30, 1/2 St. Paul's Churchyard, London.





Greek and Roman Medals



Greek Medals



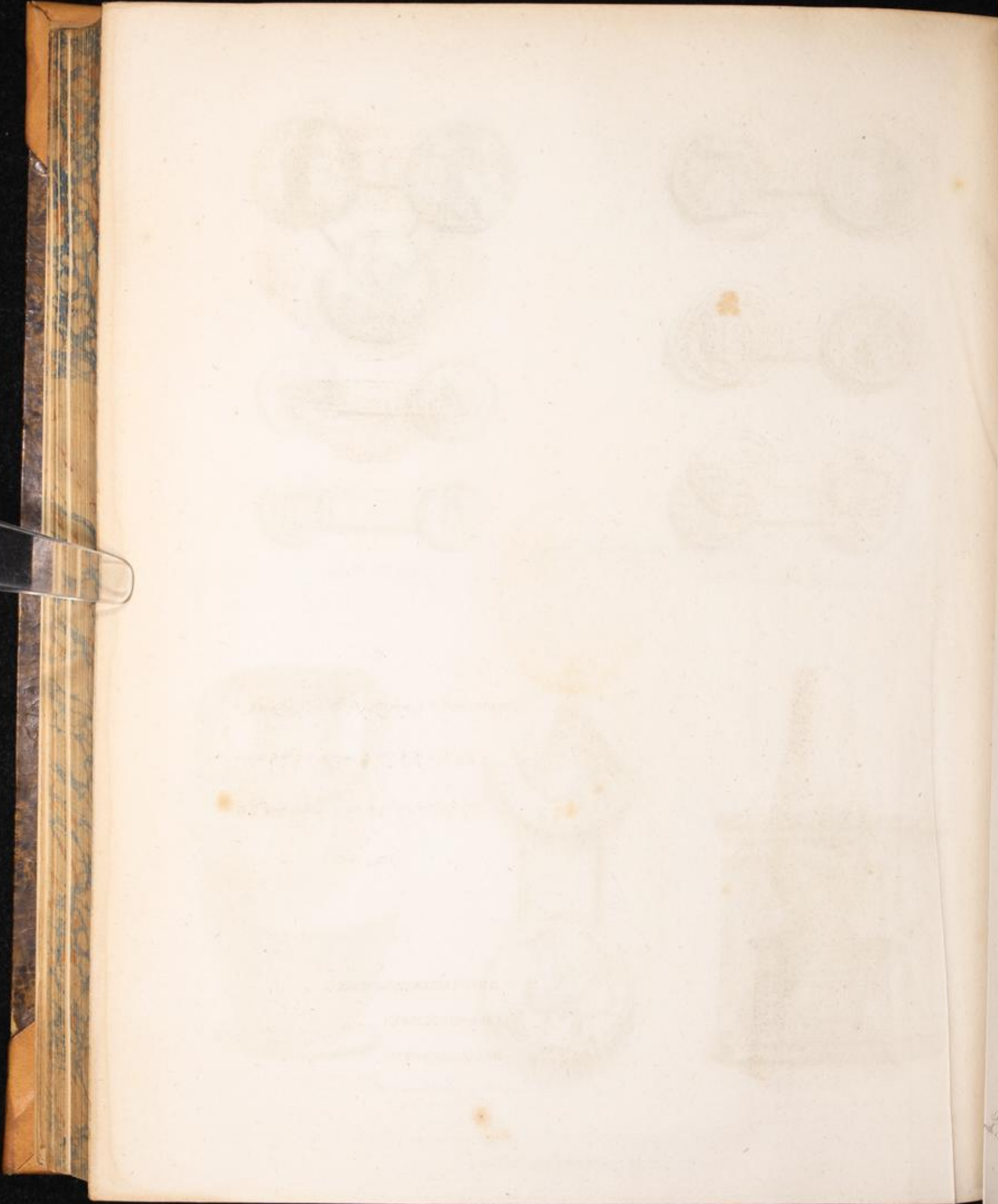
Greek Altar



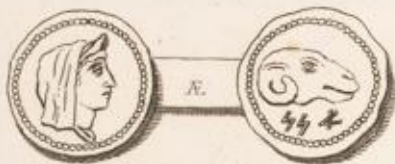
Marble found at Gera



Roman Siphonal Lamp



Part of a
classical
architectural
drawing



Thasian Medals



Vase and Patena



Base of a Candelabrum with Sans and Greek characters

79009957x9r509599D57555ax5
 595797797x7Bx797x990
 759077797x9905997797x
 779977

ΔΙΟΝΥΣΙΟΣ ΚΑΙΣΑΡΑΡΙΩΝΙ
 ΣΑΡΑΡΙΩΝΟΣ ΤΥΡΙΟΙ
 ΗΡΑΚΛΕΙΑΡΧΗΡΕΤΕΙ

Characters of the Inscriptions on the Base of Fig. 3.

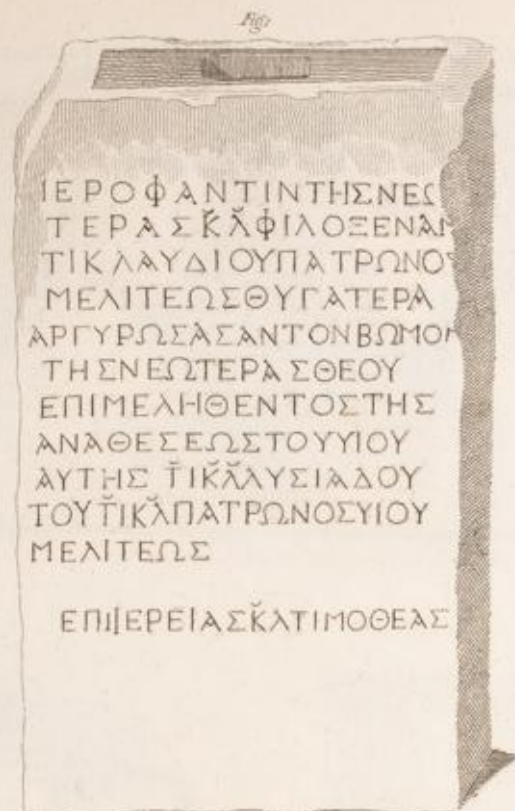


ΕΠΙΜΕΛΕΤΗΣ
ΑΝΔΡΕΑΣ ΚΑΡΑΓΕΩΡΓΙΟΥ
ΚΑΤΑΧΩΡΗΤΗΣ

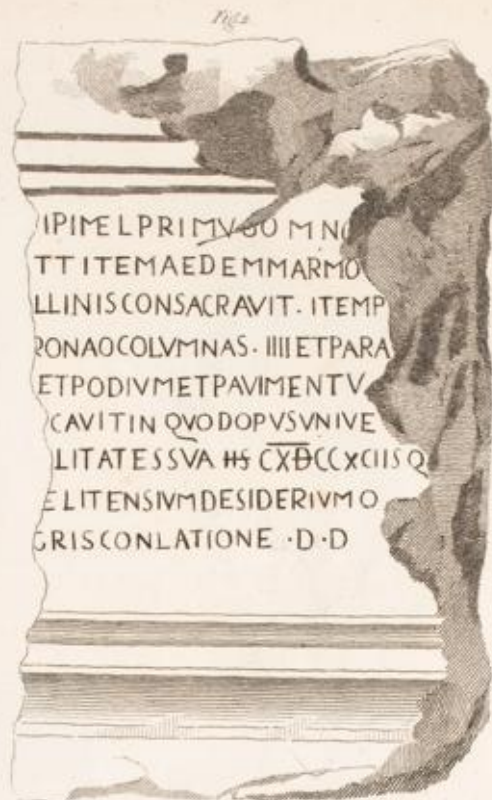


ΕΡΩΤΗ
ΤΗ
ΤΙΚΑ
ΜΕΛ
ΑΡΓΥΡ
ΤΗΕ
ΕΠΙΜ
ΑΝΔΡ
ΑΥΤΗ
ΤΟΥΤ
ΜΕΛΤ
ΕΠΙ





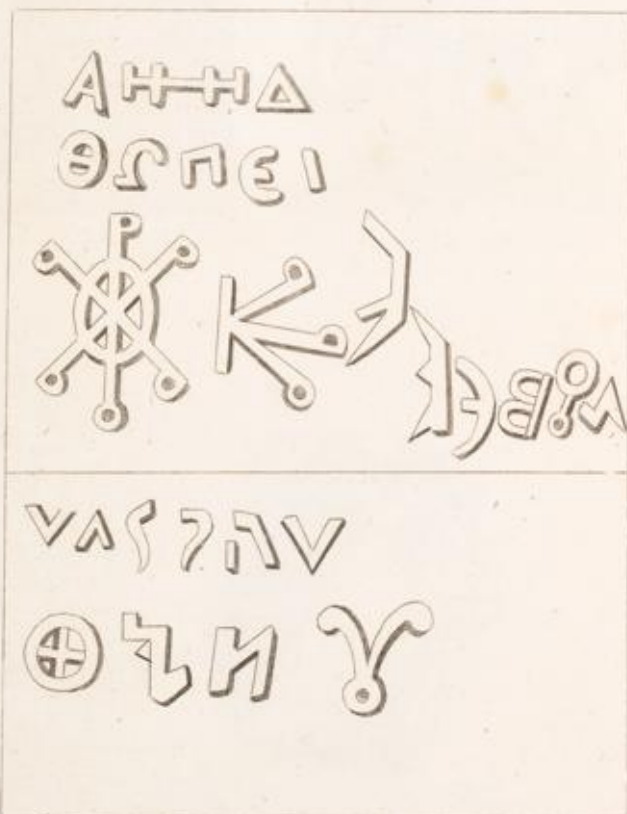
Greek Inscription.



Latin Inscription.



Bronze Statue with Greek Characters and unknown Characters.



Characters on the Statue. Fig. 3



Coin of Count Roger, Count of Malta.



[Faint, illegible text, likely bleed-through from the reverse side of the page.]





Basso Relievo. 39. Tuchs by 22.



Statue of Heracles.



Bust of Pen্থantia in Basso Relievo.



Bust of Zenobia in Basso Relievo.



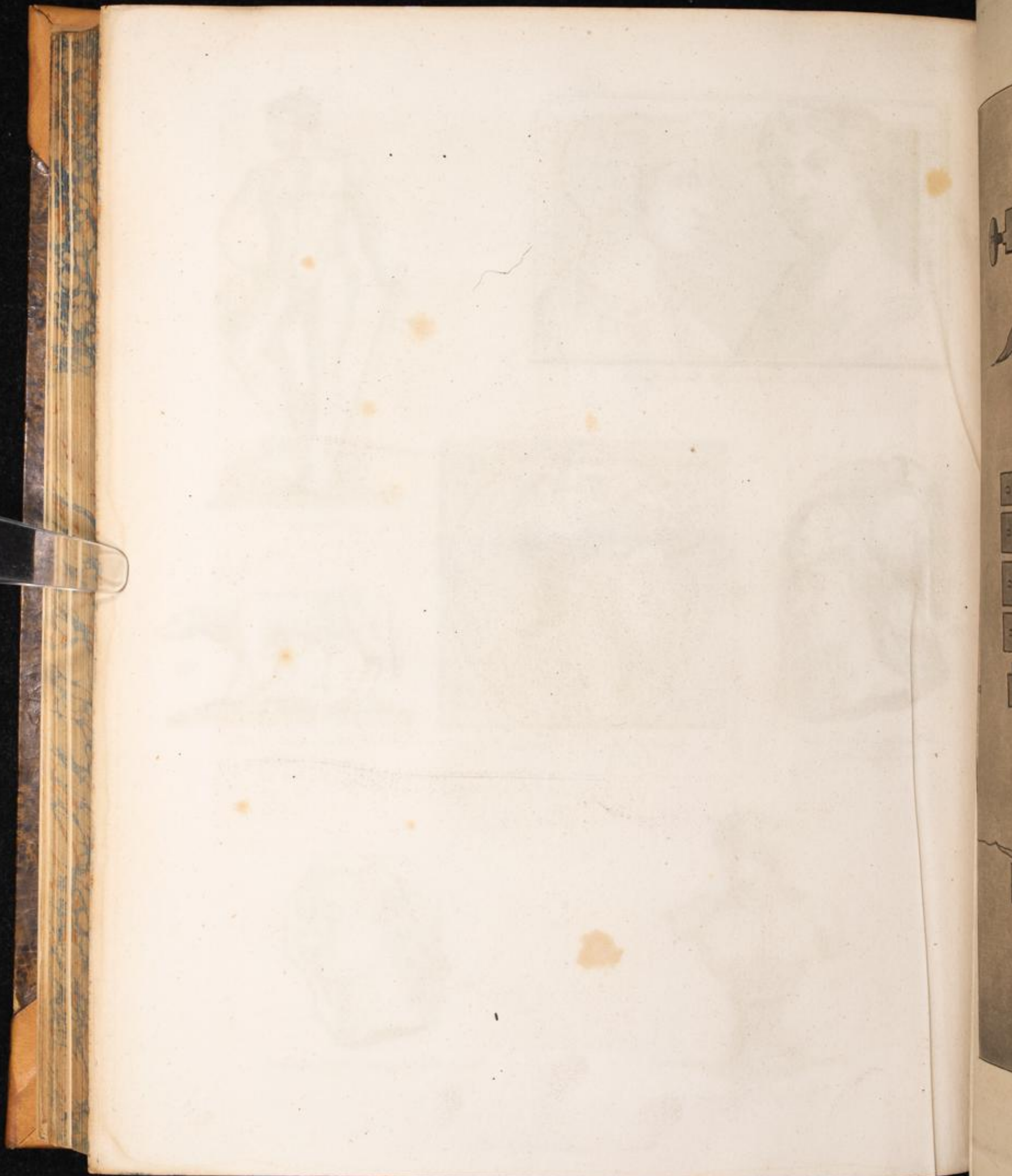
The Wolf which suckled Romulus & Remus.



Bust of Antinous.



Head of Augustus Basso Relievo.



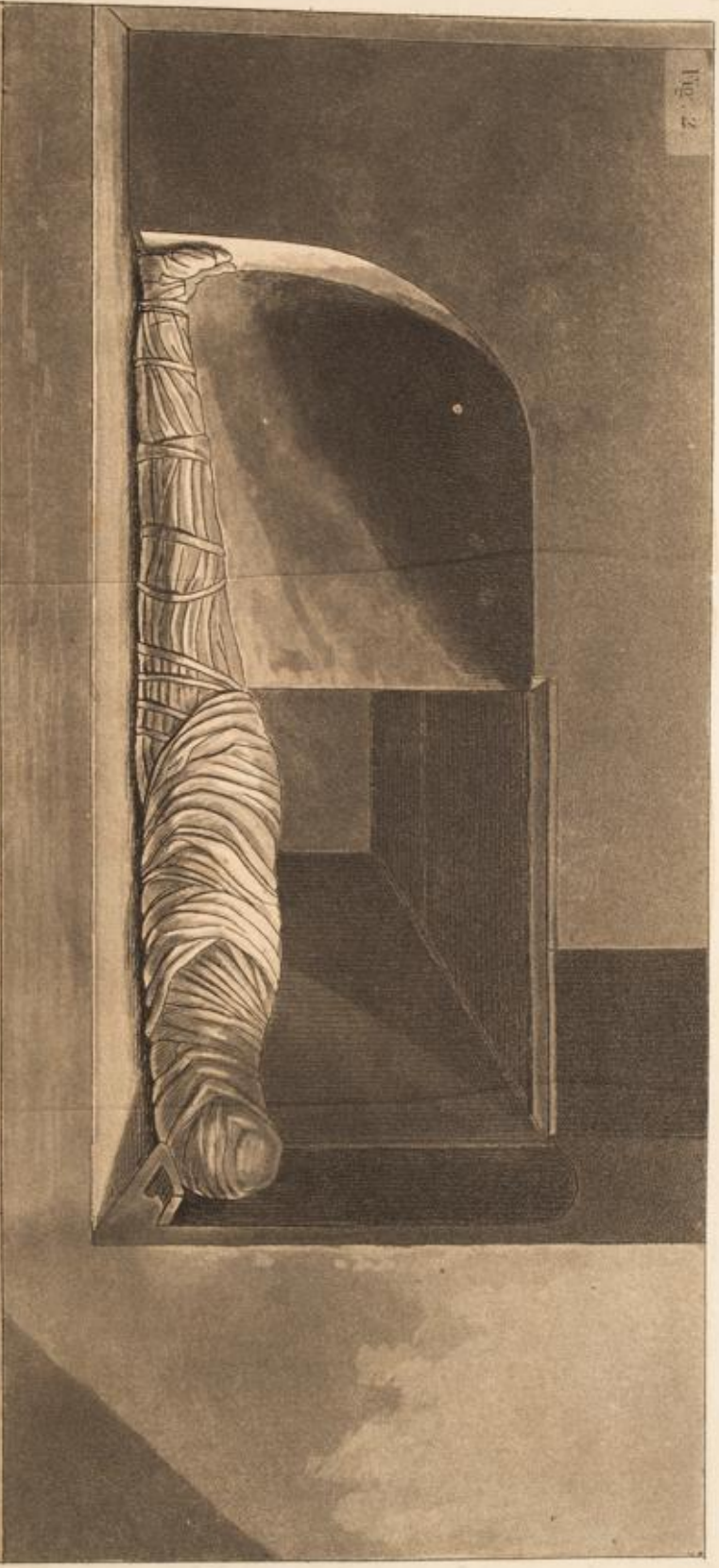


Fig. 2.

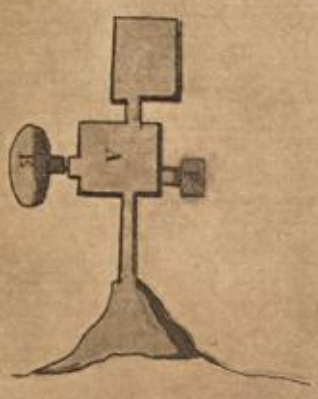


Fig. 3.

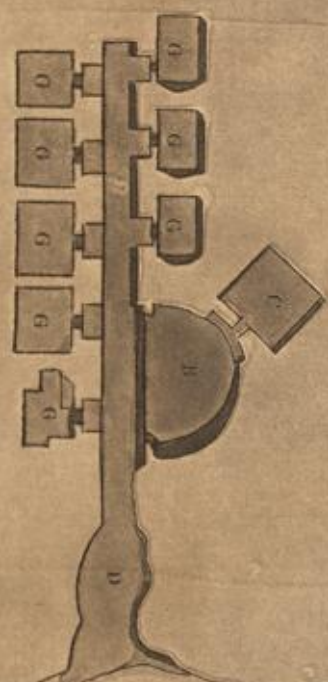
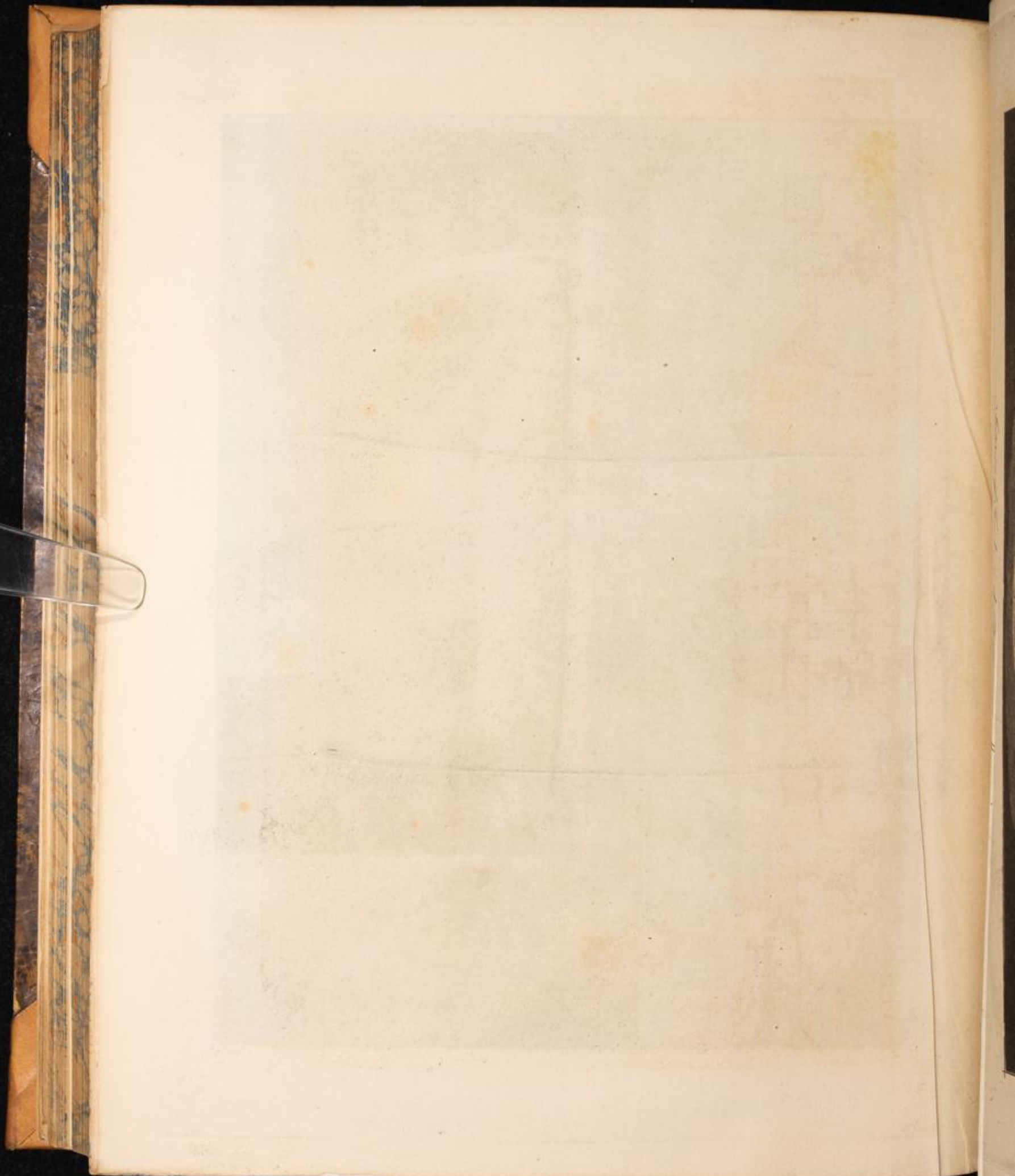


Fig. 4.



Fig. 5.

Plan and Situation of Tombs in the Pyramids, Kouroum.
 Published by J. G. Knapton, London, 1782.



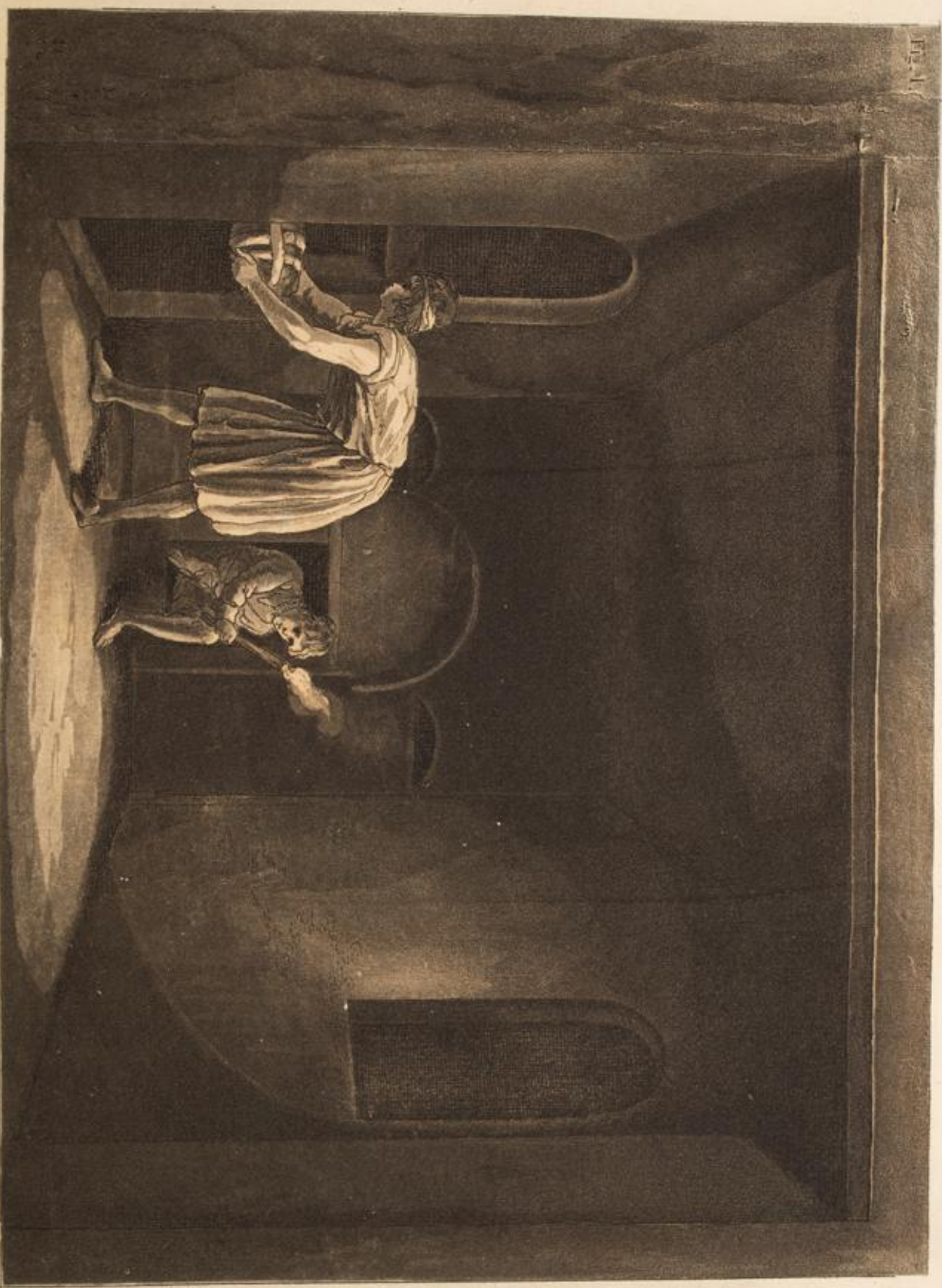


Fig. 1.

Pl. X.

Interior of Tombs in the Beni Hassan, Egypt.

Published by G. Fisher, London, May 1818.



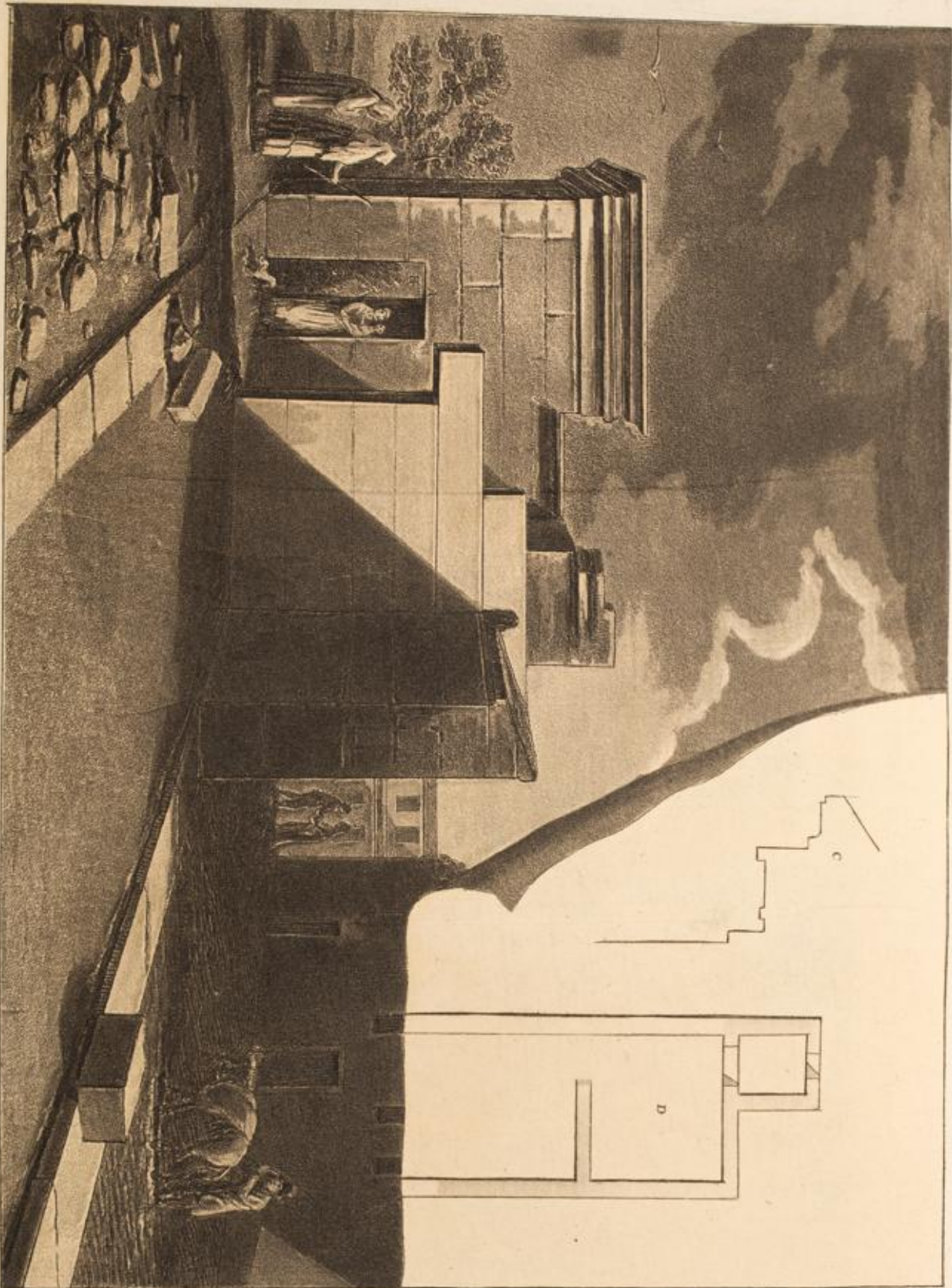
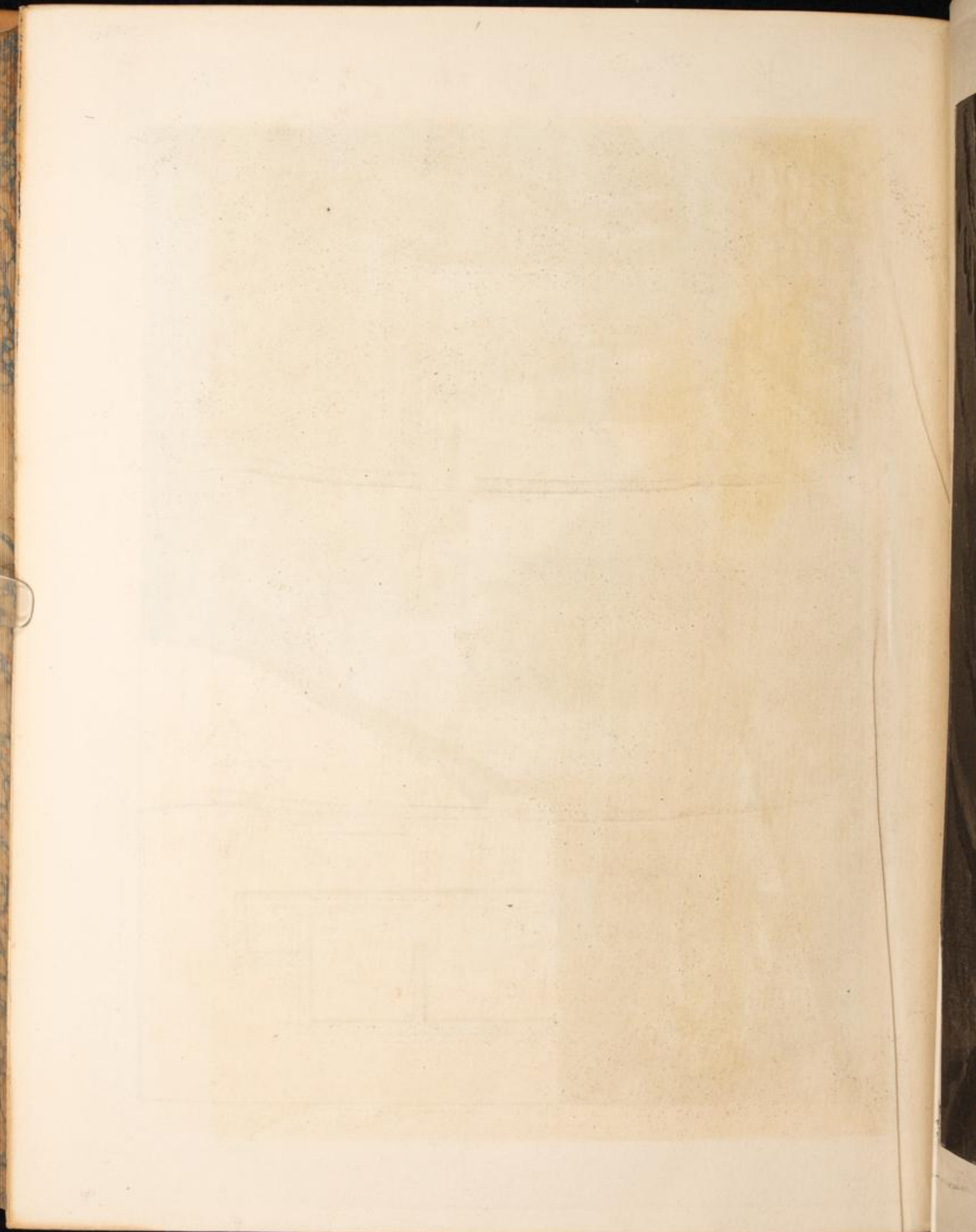


PLATE 1

Remains of an House in the Garden of the Madras at Canal Bank.

Engraved by J. G. ...





Large view of the Works situated in the Gorge of Tullyhoo.

Engraved by J. G. Thompson, London, 1845.

W. & A. G. Brown, London.

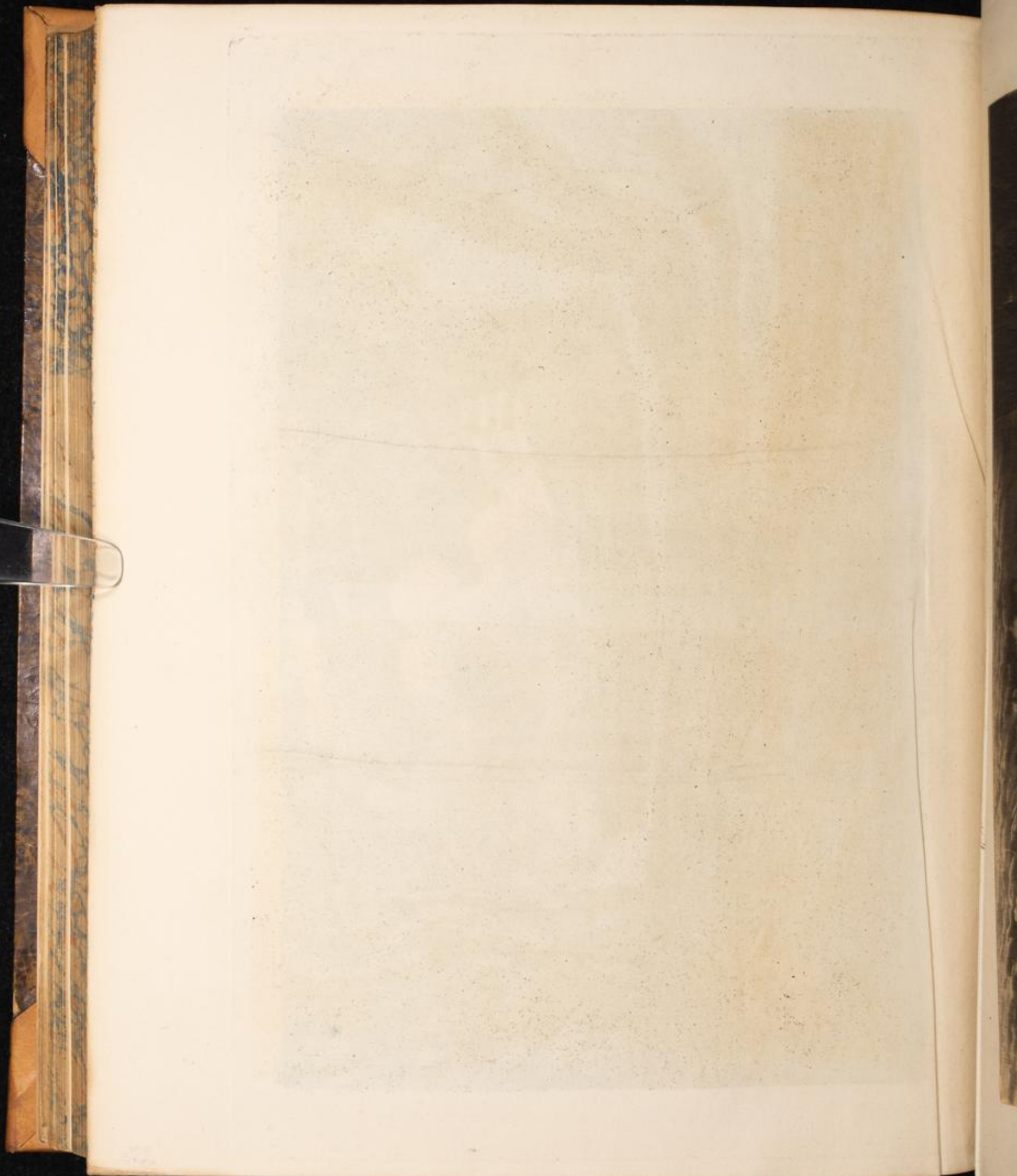
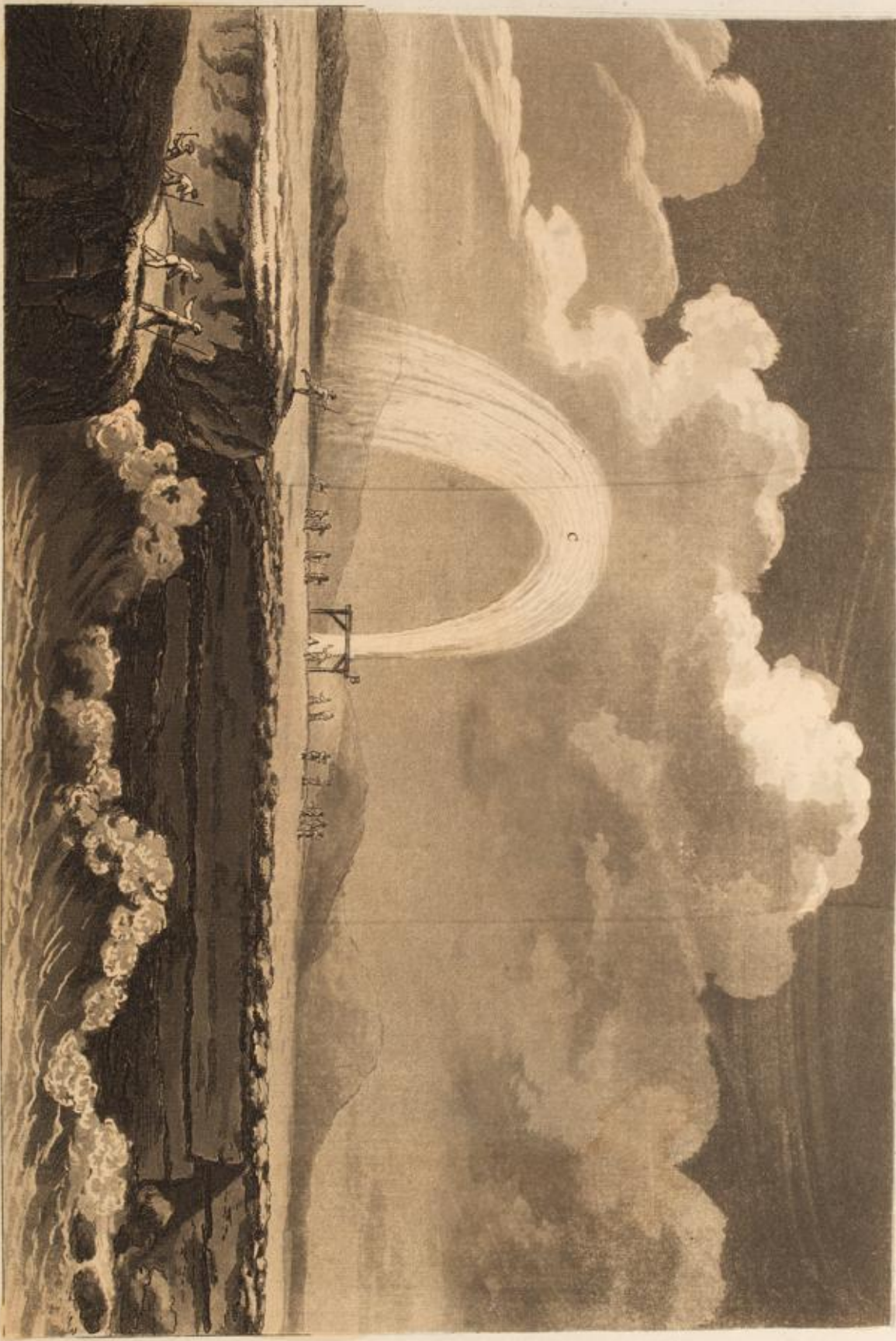
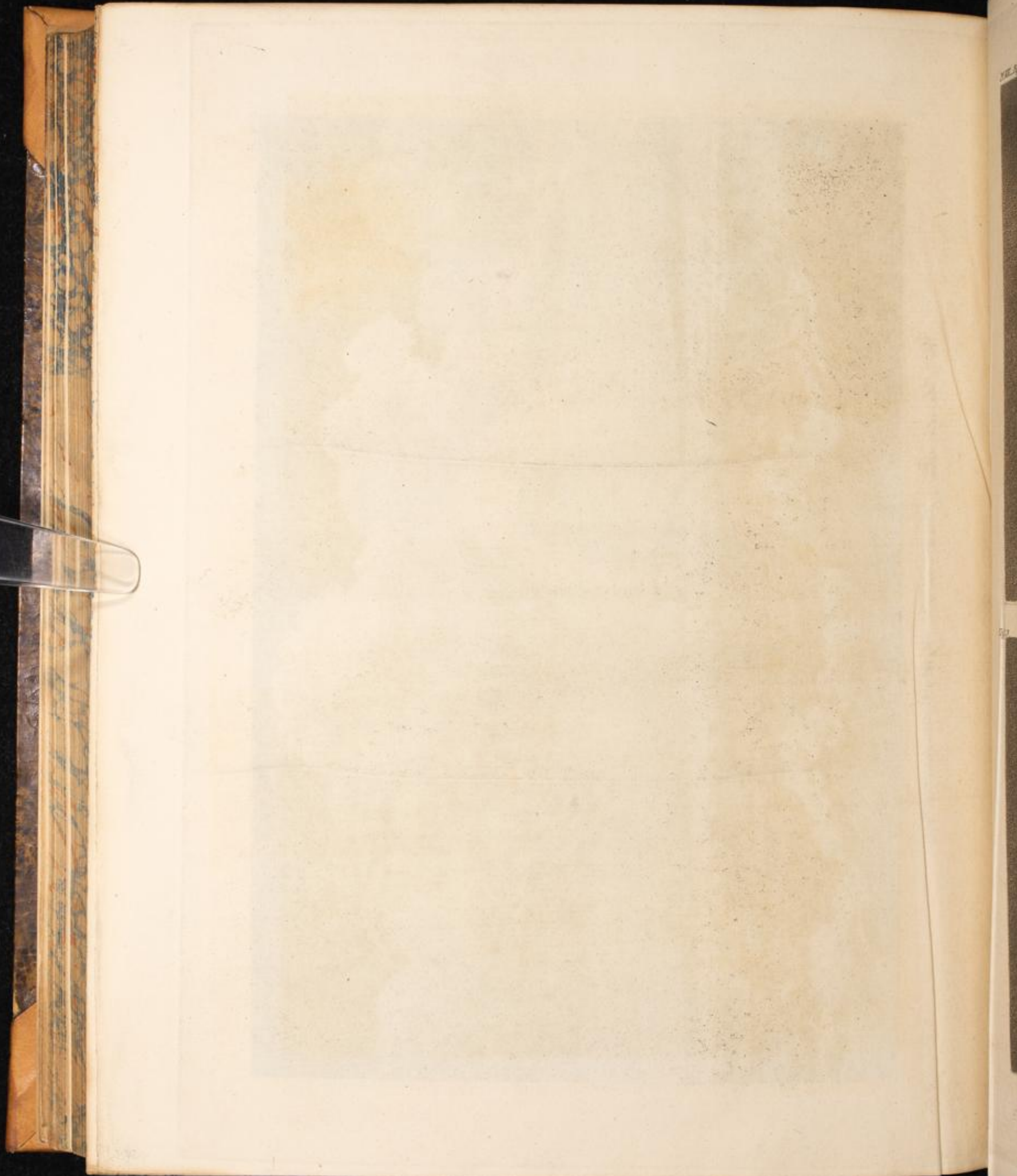


PLATE VII. FIG. 1.



View of the extraordinary fountain occasioned by the Clark-mountain Salt Works.

Engraved by J. G. Goussier, London. MDCCLXXIV.



P. VII. Figs.

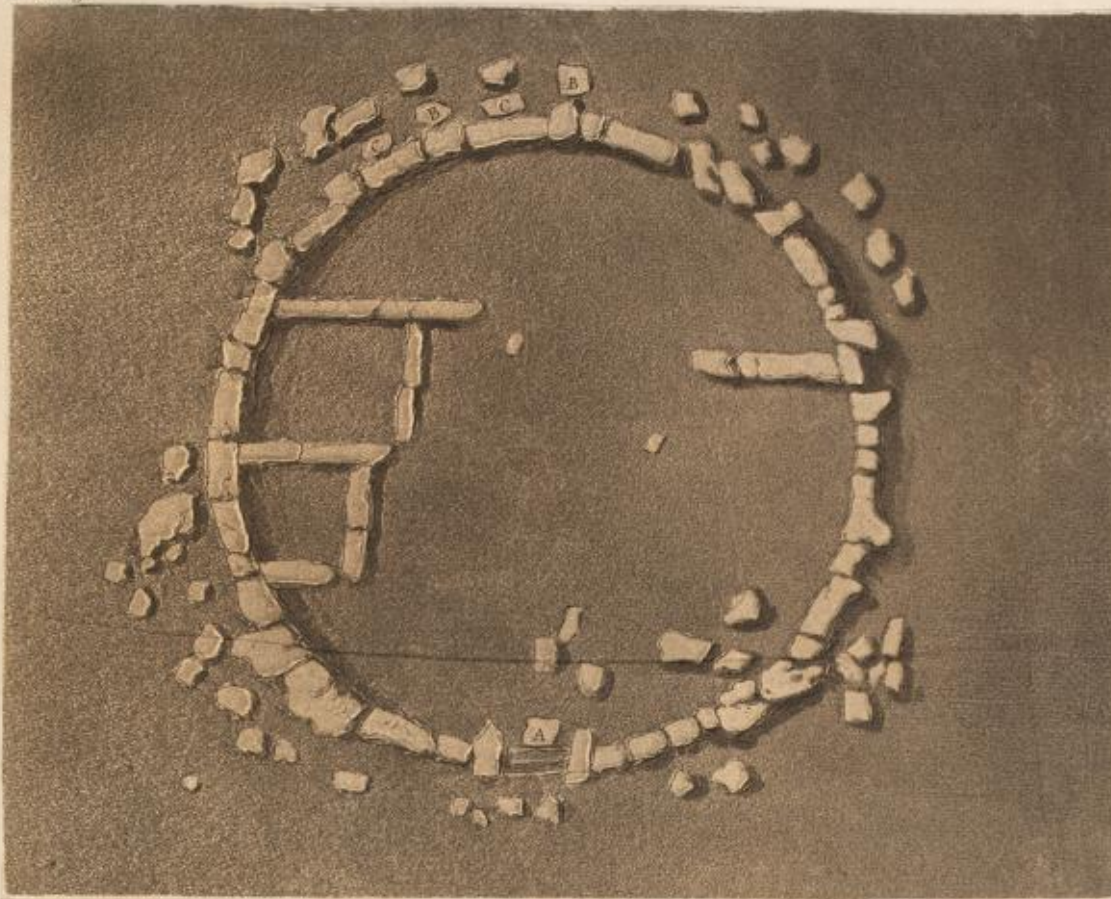
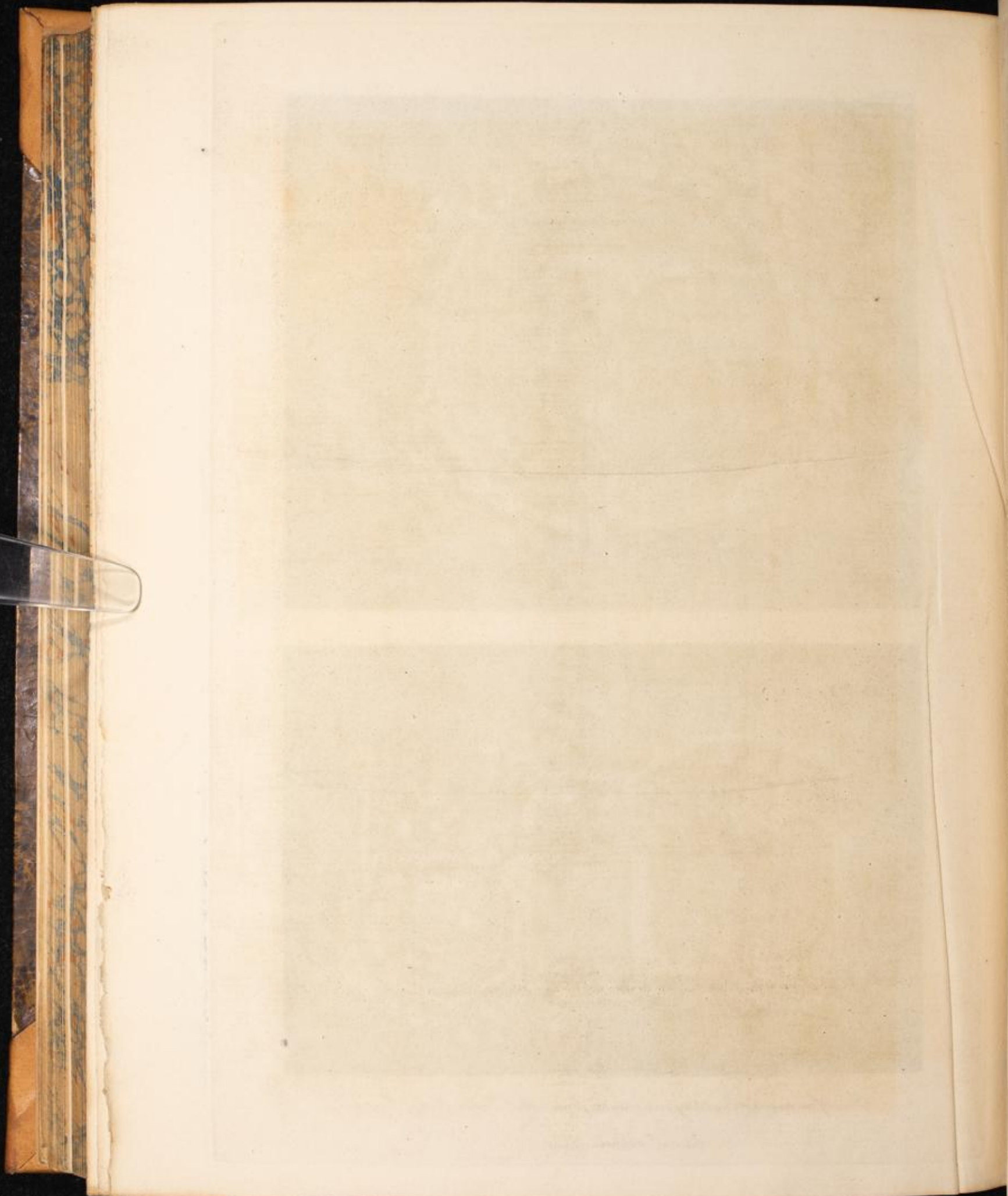


Fig. 2



Plan of an ancient Building in a circular form, called Tadar Nadur Izira.

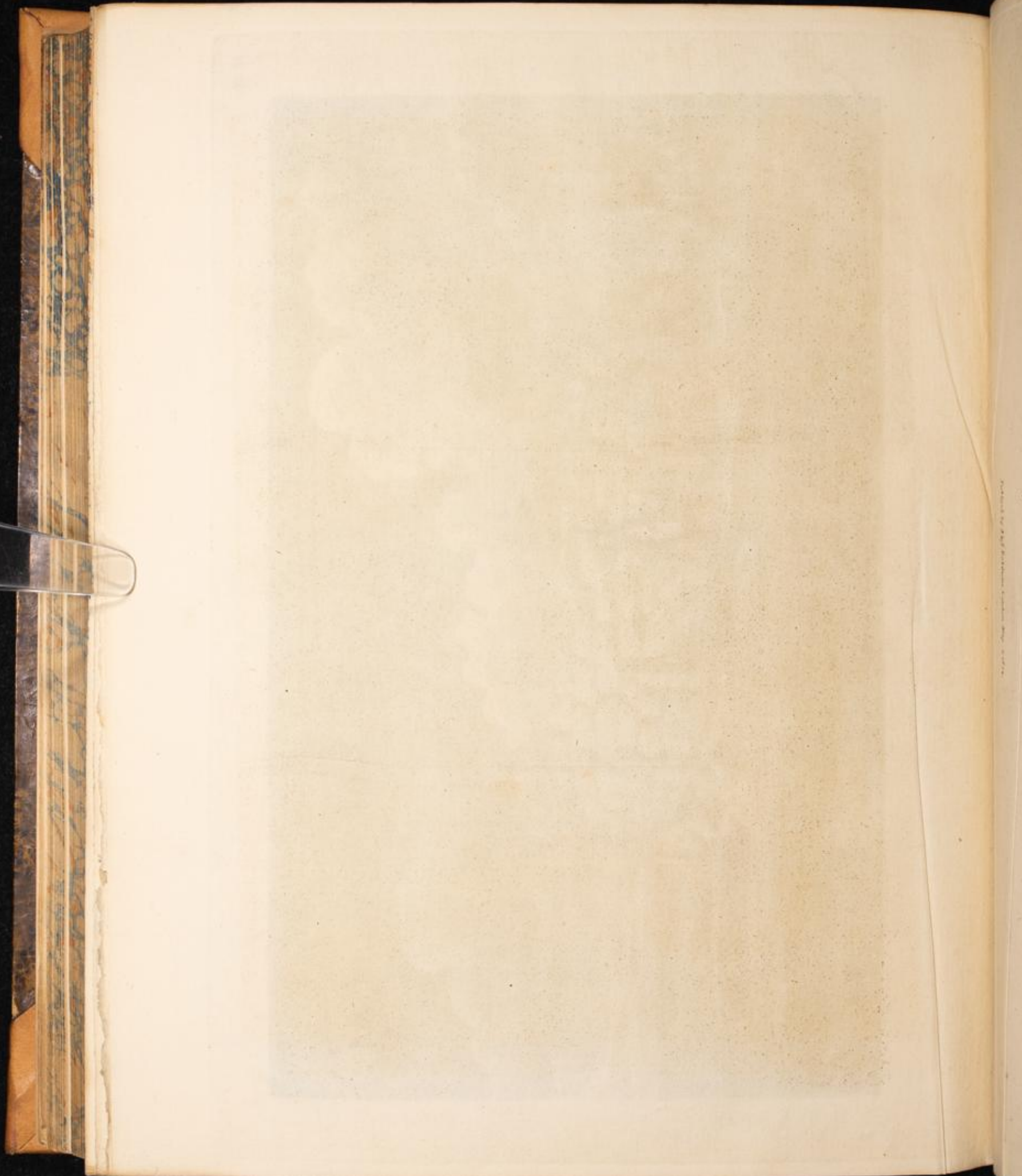


Faint, illegible handwritten text or a signature, possibly located on the adjacent page or in the gutter.



Remains of an ancient Egypt called the Temple of Isis.

Published by W. I. Robinson, London, May 1804.





View of the Washburn Head of Rock.

Published by G. & J. Colburn, London, 1834.

W. & A. G. & Co. del.



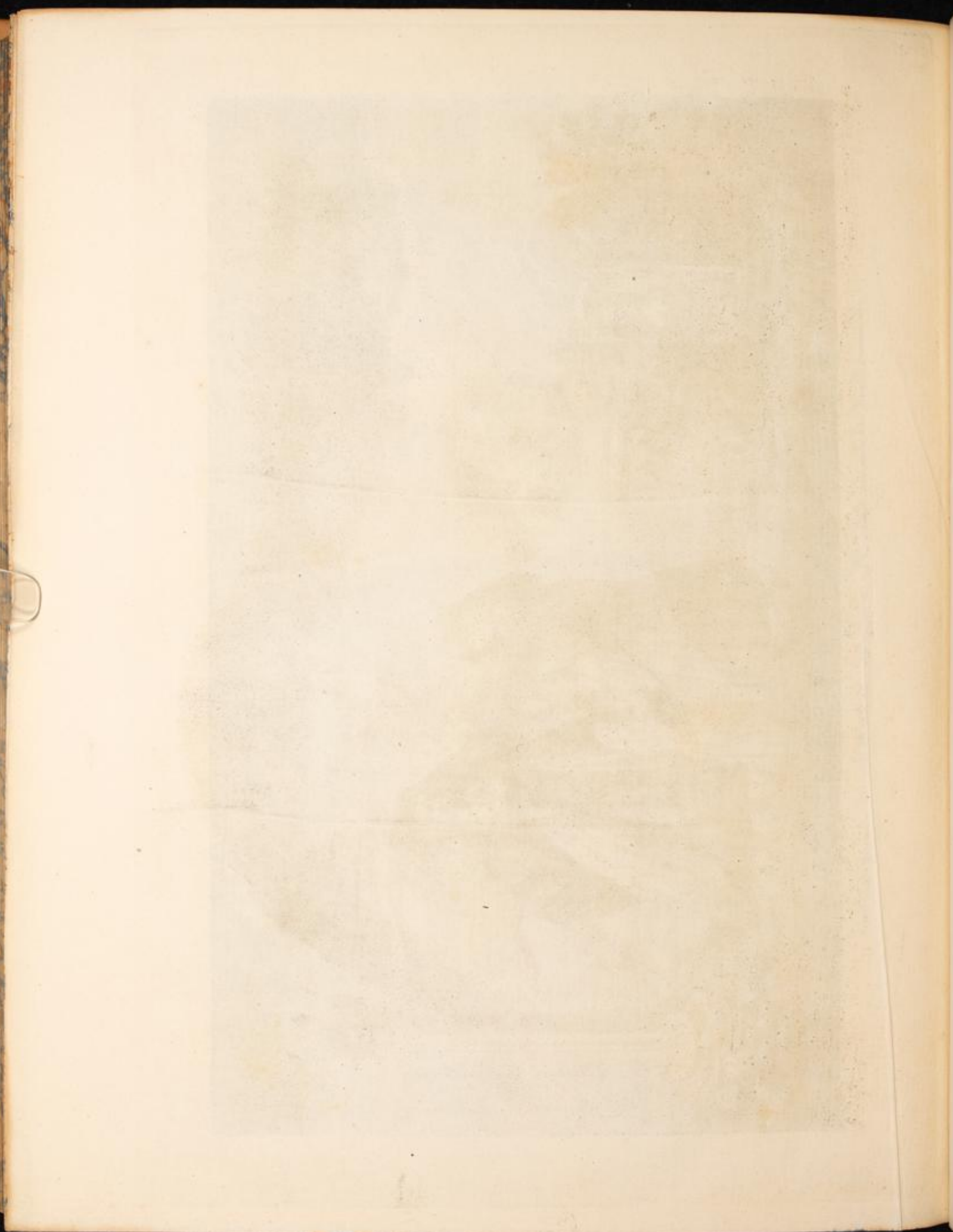
Specimens found in Hudson on the Hudson River. Hudson River. Hudson River. Hudson River.

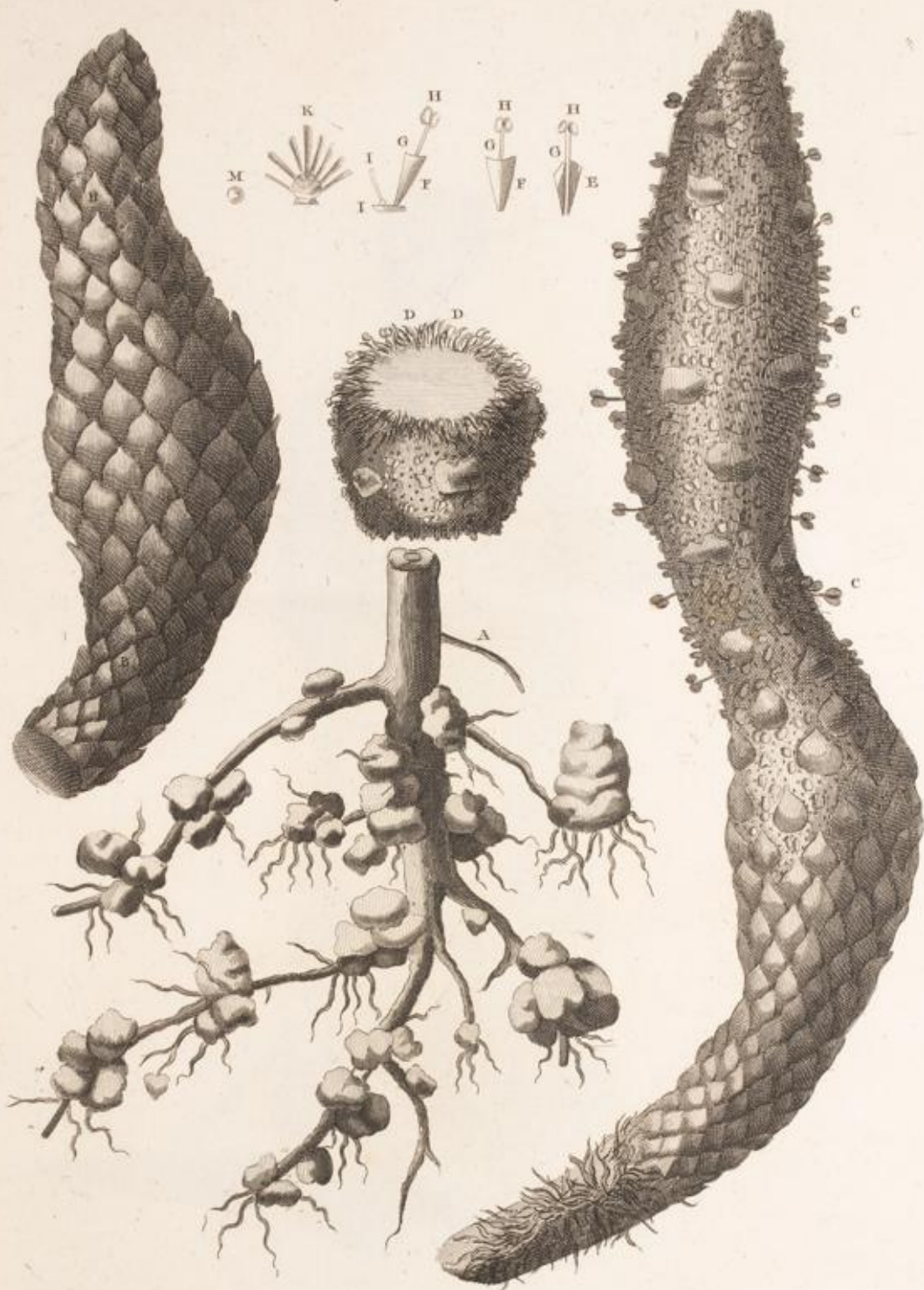
N. X.



Spacious Tomb. Buried on Malton Day. Signs of the Malton Women. Remains of the Column.

Engraved by G. Kneller. London. 1714.





Fungus Melitensis.

Published by W. L. Robinson London May 1801.



PLATE



*Raymond du Puis,
from an Original Painting.*

Engraved by J. G. Robinson London. MDCCLXX.



PL. XIII



A Professed Knight in the Habit worn at his reception.



Pl. XIV



A Nun of the Order of St. John of Jerusalem.

Published by J. Robinson London MDCCLXXIV.



the scale towards document



A Nun of the Order of St. John of Jerusalem.

Published by J. & H. Colburn London My. 1814.



