

BREVIS INDEX DIGNITATUM
 omnium ac magistratuum, necnon & sacerdotium quæ in toto Feneſtella & Pomponio reperiri poſſūt: cuius numerus prior, foliū: alter, paginam denotat.

A		ſtæ	55.z
Aborigines	53.1	Aſcanius augur	55.z
Acca Laurentia	54.z	Atys	58.1
Accēſi & præco.	40.1	Augurandi ars	55.1
Aediles	48.z	Augures nouem	55.1
Aediles cereales	27.z	Auguria	5.1
Aediles curules	27.z	Augurū collegiū	6.1
&.48.z		B	
Aediles plebei	27.1	Belli dicēdi mos	10.z
Aedes Veſtæ	55.z	Bona dea	35.1
Aediliū munera	28.1	C	
Amata	56.1	Caci cædes.	4.1.54.1
Amatæ nomē vnd.	8.z	Camilli	56.z
Ancile vnde	56.z	Candidati	22.z
Ancilia quid	9.1	Cādidiati princip.	8.z
Antiquū oppidū.	54.1	Canis immolarur	53.z
Antonii tyrānis	36.1	Carmenta	4.1
Apices	56.z	Cæſſiani	52.z
App. Clau. Cētimalus		Celeres	44.1
R literæ inuentor:		Cēſores 3z.z.& 48.z	
quod non eſt veriſſi-		Cenſorū authori.	3z.z
mile	51.1	Cereales	4 ^o .z
Appius Clau. libidinis		Collegiū augurū.	55.1
exemplum	29.z	Collegiū pōtificū.	9.1
Ara extēporalis	54.1	Comitiati	48.z
Arcana in templo Ve-		Comitiorū diuer.	23.1

INDEX

Cócionē habere.	15.1	Duumiuri & decemui	
Conscripti qui	15.2	ri sacrorum	58.1
Consules	21.2.&	Duumiuri sacrorú	13.1
	46.1.&.50.1	E	
Corona spicea	54.2	Edictú pratoris	52.1
Curiaē	43.2	Epulare sacrificiú.	58.2
Curiatæ leges	43.2	Epulones	58.2
Curiones	43.2	F	
Cybele	58.1	Fana	53.1
D		Falces	44.1
Decem' tabulæ	29.1	Fatua. Fatuarii	53.1
Decē Tarquinii	31.1	Faunus	2.1.&.53.1
Decemuiuri	49.2	Februarius	53.2
Decemuiuri è duumuis		Februata dies	53.2
ris	13.2	Ferendi fœderis ritus	10.1
Decemuiuri exacti	31.1	Flamen dialis	6.2
Decemuiuri legú ferēdas		Flamē vnde dictus.	6.2.&.56.2
ru causa creati	28.2	Flamines	56.1
Decemuir. tyrānis.	29.2	Flaminulæ	56.2
Decuria patrum	19.1	Fœciales	57.1
Dictator.	23.2.46.2.	Fœciales vnde	57.1
Dictator vnde appel-		Fœcialis sacerdos	10.1
latus	24.1	Fœcialis munus	10.1
Dialis flamen	56.1	Fœderavn. appel.	10.1
Dialis vnde	6.2	Fratres aruales, qui pri	
Duo dolia in templo		mi fuerunt filii Lau	
Vestæ	55.2	rentiæ.	54.2
Duumiuri	44.2	G	
Duumiuri capitales	19.2	Galli matris deú.	58.1
Duumiuri classis restit-			
tuendæ	38.1		

ALPHABETICVS

Galli vnde dicti	58.1	Libri Sibyllini	58.1.
Galli sacerdotes	12.2	lycaeus z. 1. lycæa.	53.1
H			
Hercules Cacum inter		Lictores	44.1
ficit	54.1	Lictores vnde	22.1
Hercules thesaurorum		Lituum quid	5.1
deus	54.2	Locus augurii	55.1
I			
Ignis Vestalis	55.2	locus sena. habē.	16.2
Inaugurandi ritus	5.1	Luere	53.2
Interrex 19.1. &	44.2	Lupercal. 3.1. &	53.2
Interregia ptās	18.2	Lupercales vnde	3.1
Iunus	53.1. Ius. 59.1	Lupercalia	53.1
Ius ciuile	51.2. & 59.1	Lultrum	49.1
Ius ciuile Papyrianum		M	
	43.2	Magister equitū	24.1
Ius gentium	59.1	& 45.1. & 46.2	
Ius honorarium	35.1	Magister populi	23.2
& 50.2		Magister stabuli	45.1
Ius priuatum	59.1	Magistratus	59.2
Ius publicum	59.1	Maestas regia	44.1
Ius naturale	59.1	Martialis flamē	56.1
Ius respondendi publi		Mater deum	58.1
ce	52.1	Mensarii	35.2
L			
Latinarū feriarū præ		Merum imperiū.	26.2
fectus	35.2	Minorū magistratum	
legati procōsules.	50.1	species	37.1
legati procōsulū.	26.2	Mons sacer	47.1
Legis virtus. Lex	59.1	Multitudinis patroni.	
Lex. xii. tabula.	49.2	44.1.	N
		Nasica vir optimus.	
		58.1.	O
		Ordo cōsulendi senas	

INDEX

tus. 15.z	Præfecti alarum & co
P	hortium 45.z
Palladiū. 55.z. pā. 53.1	Præfectus annonæ 31.
Pana quare nudi colue	1.&.45.1
rint z.1	Præf. castrorum. 46.1
Pan Lycæus 53.z	Præf. fabrorum 46.1
Panos sacra atq; facer	Præfect. militiæ 45.z
dotes z.1	Præf. legionis. 45.z
Pater patra. vnd. 57.1	Præf. pratorio. 24.1
Patres cōf. 15.1.44.z	& 37.1.&.45.1
Patres patricii 44.1	Præfectus vigilū. 45.z
Patres qui 15.1	Præf. vrbis. 20. z. 35
Patris patra. part. 11.1	z.&.37.1.&.45.1
Patricii qui 15.1.& 2	Præfes 39.z
Pedarii qui 15.z	Prætores 34.z
peregrinus prætor 35.1	Prætor peregri. 50.z
Plebiscita 44.z	Prætor. vr. 34. z. & 50.1
Pompeii dictum. 31.z	Primi legum lat. 59.z
Pōtifex maximus. 9.1	Primpilus 45.z
Pontifex vnde 57.z	Principes ciuita. 44.1
Pontifices 57.1	Procōlules. 25. z. 50.1
Pōtifex maximi. 57.z	Proculani 5z.z
Pontifices vnde 9.z	Procurator Caesaris 38
Pōti. max. titulus 6.z	z.&.51.1
cū Populo agere 14.z	Q
Potestas 59.z	Quæstores. 18.1. 46.z
Potestas senatus & ple	Quæstores duo 47.1
bis 44.z	Quæst. parricidii 18.z
Potitii & pinarii 54.1	Quatuor viri 37.z.
Potitii & Pinarii Her	&.50.z
culis 3.z	Quinque viri 50.z

ALPHABETICVS

Quinq; viri mēsa. 35. z	tris deorum	12. I	
Quinque viri	58. z	T	
Quirinalis flamē	56. I	Tarquini mors	31. I
R		Tempus senatus	16. z
Rex sacrificulus.	57. z	Titi sodales	58. z
Rhea	58. I	Torquati cognomen	
Romulus augur	55. I	tum	22. z
Romulus, vrbis Ro		Trabea	56. z
manæ cōditor	45. z	Tres viri	37. z
Rufulci tribuni	48. z	Tres viri capi.	50. z
S		Taes viri moeta.	50. z
Sacerdot. castrati	58. I	Tribunus celerū	44. I
Sacerdo. princip.	57. z	Tribuni celerum equi	
Sacerdotes. lx.	55. z	tum	18. I
Sacerdotia fratrum ar		Tribuni militū.	48. I
ualium	4. z	Tribuni militū, & cō	
Sacerdotium patris pa		fularis potestas	32. I
trati	10. z	Tribu. lactofan.	47. z
Sacrificulus	11. z	Tribunitia ptās.	47. z
Sacrorum rex	11. z	Trib. vn.	43. z. 47. z
Sali Marti dicati	8. z	Trib. pl.	24. 1. & 47. I
Sali qui	8. z, & 56. z	Tribus	43. z
Salius	56. z. secu.	44. I	Triūviri coloniæ dedu
Sella curulis	44. I	cendæ	33. z
Senatores	15. I. 44. z	Triūviri reip. cōstitu.	
Senatoria atas	17. I	36. I. Trofili.	44. I
Senatoria perso.	17. I	V	
Senatorū origo	15. I	Vestales	72. & 55. z
Senatuscōsultū	44. z	Vestalis delinquentis	
Septēviri epulonū	13. z	pœna	56. I
Simulacri traiectio ma		FINIS.	

ALPHABETICAL

121	the bottom	Chingvinitia 322
122		Chingvinitia 322
123	Tarquinus	Chingvinitia 322
124	Tarquinus	Chingvinitia 322
125	Tarquinus	Chingvinitia 322
126	Tarquinus	Chingvinitia 322
127	Tarquinus	Chingvinitia 322
128	Tarquinus	Chingvinitia 322
129	Tarquinus	Chingvinitia 322
130	Tarquinus	Chingvinitia 322
131	Tarquinus	Chingvinitia 322
132	Tarquinus	Chingvinitia 322
133	Tarquinus	Chingvinitia 322
134	Tarquinus	Chingvinitia 322
135	Tarquinus	Chingvinitia 322
136	Tarquinus	Chingvinitia 322
137	Tarquinus	Chingvinitia 322
138	Tarquinus	Chingvinitia 322
139	Tarquinus	Chingvinitia 322
140	Tarquinus	Chingvinitia 322
141	Tarquinus	Chingvinitia 322
142	Tarquinus	Chingvinitia 322
143	Tarquinus	Chingvinitia 322
144	Tarquinus	Chingvinitia 322
145	Tarquinus	Chingvinitia 322
146	Tarquinus	Chingvinitia 322
147	Tarquinus	Chingvinitia 322
148	Tarquinus	Chingvinitia 322
149	Tarquinus	Chingvinitia 322
150	Tarquinus	Chingvinitia 322
151	Tarquinus	Chingvinitia 322
152	Tarquinus	Chingvinitia 322
153	Tarquinus	Chingvinitia 322
154	Tarquinus	Chingvinitia 322
155	Tarquinus	Chingvinitia 322
156	Tarquinus	Chingvinitia 322
157	Tarquinus	Chingvinitia 322
158	Tarquinus	Chingvinitia 322
159	Tarquinus	Chingvinitia 322
160	Tarquinus	Chingvinitia 322
161	Tarquinus	Chingvinitia 322
162	Tarquinus	Chingvinitia 322
163	Tarquinus	Chingvinitia 322
164	Tarquinus	Chingvinitia 322
165	Tarquinus	Chingvinitia 322
166	Tarquinus	Chingvinitia 322
167	Tarquinus	Chingvinitia 322
168	Tarquinus	Chingvinitia 322
169	Tarquinus	Chingvinitia 322
170	Tarquinus	Chingvinitia 322
171	Tarquinus	Chingvinitia 322
172	Tarquinus	Chingvinitia 322
173	Tarquinus	Chingvinitia 322
174	Tarquinus	Chingvinitia 322
175	Tarquinus	Chingvinitia 322
176	Tarquinus	Chingvinitia 322
177	Tarquinus	Chingvinitia 322
178	Tarquinus	Chingvinitia 322
179	Tarquinus	Chingvinitia 322
180	Tarquinus	Chingvinitia 322
181	Tarquinus	Chingvinitia 322
182	Tarquinus	Chingvinitia 322
183	Tarquinus	Chingvinitia 322
184	Tarquinus	Chingvinitia 322
185	Tarquinus	Chingvinitia 322
186	Tarquinus	Chingvinitia 322
187	Tarquinus	Chingvinitia 322
188	Tarquinus	Chingvinitia 322
189	Tarquinus	Chingvinitia 322
190	Tarquinus	Chingvinitia 322
191	Tarquinus	Chingvinitia 322
192	Tarquinus	Chingvinitia 322
193	Tarquinus	Chingvinitia 322
194	Tarquinus	Chingvinitia 322
195	Tarquinus	Chingvinitia 322
196	Tarquinus	Chingvinitia 322
197	Tarquinus	Chingvinitia 322
198	Tarquinus	Chingvinitia 322
199	Tarquinus	Chingvinitia 322
200	Tarquinus	Chingvinitia 322

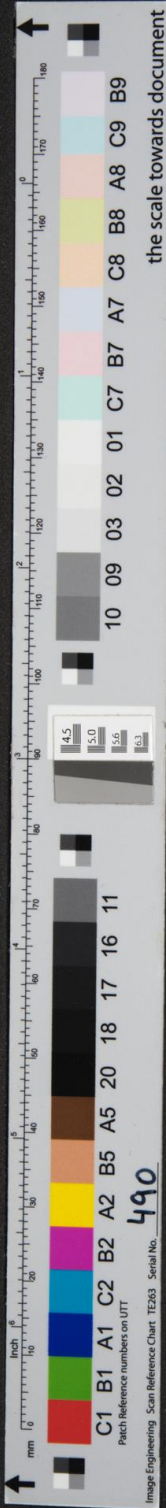


Image Engineering Scan Reference Chart TE263 Serial No. 490

C1 B1 A1 C2 B2 A2 B5 A5 20 18 17 16 11
 Patch Reference numbers on UTT
 10 09 03 02 01 C7 B7 A7 C8 B8 A8 C9 B9

the scale towards document

VS
 12.1
 hors 31.1
 natus 16.2
 58.2
 gnomens
 22.2
 56.2
 37.2
 api. 50.2
 octa. 50.2
 elerú 44.1
 lerum equi
 18.1
 ilitú. 48.1
 ilitú, & cō
 testas 32.1
 ofan. 47.2
 ptās. 47.2
 43.2. 47.2
 .1. & 47.1
 43.2
 loniæ dedu
 33.2
 ip. cōstitú.
 tituli. 44.1
 V
 72. & 55.2
 elinquentis
 56.1
 NIS.