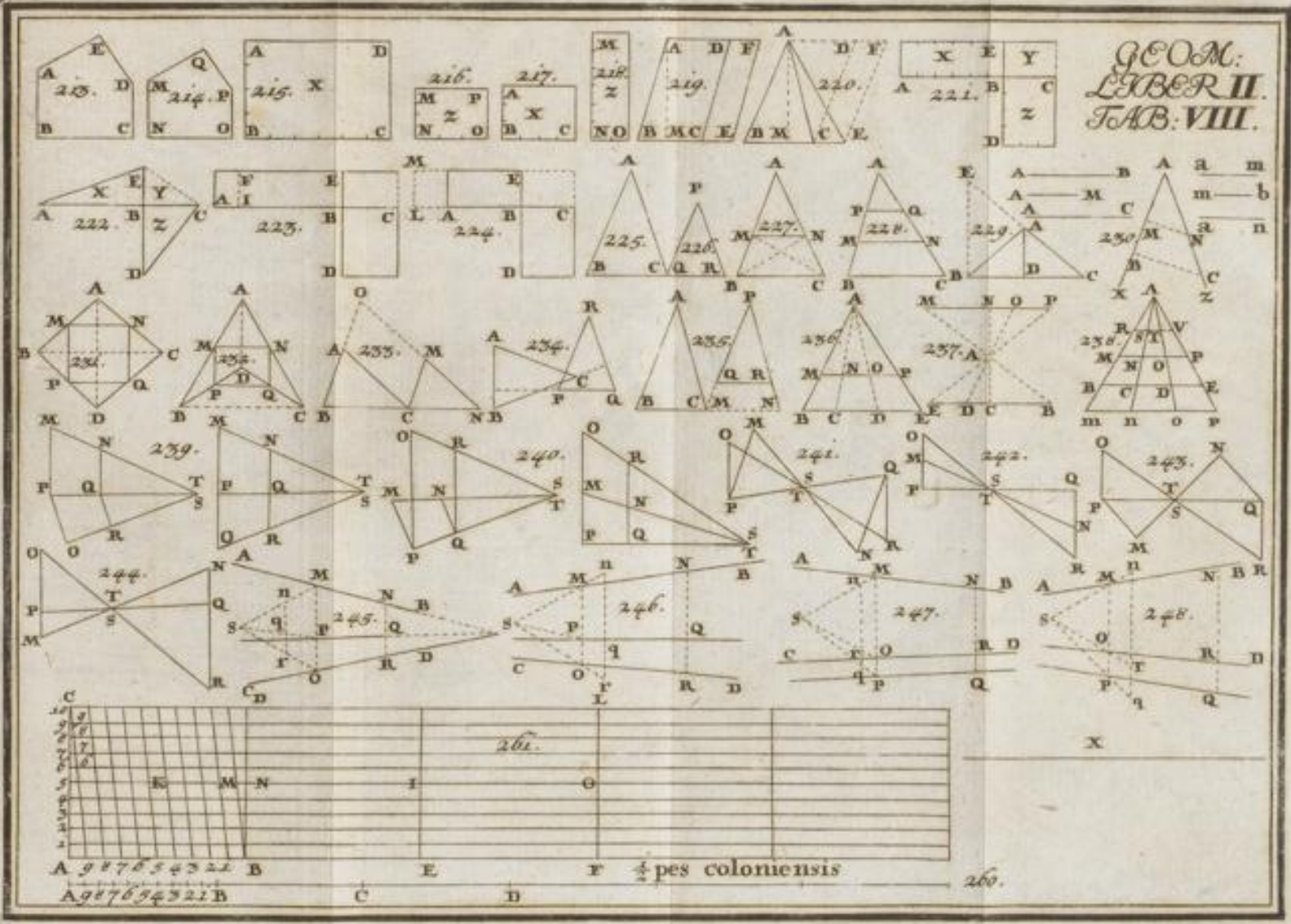


LIBER IV.  
 pro quibus  
 in tot lineis  
 una, que  
 necesse  
 scriptura

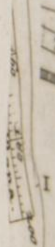
GEOM.  
 LIBER II.  
 TAB. VIII.





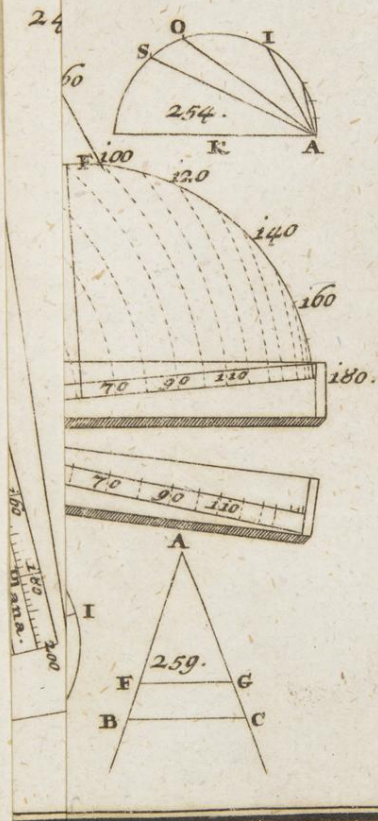
21

6

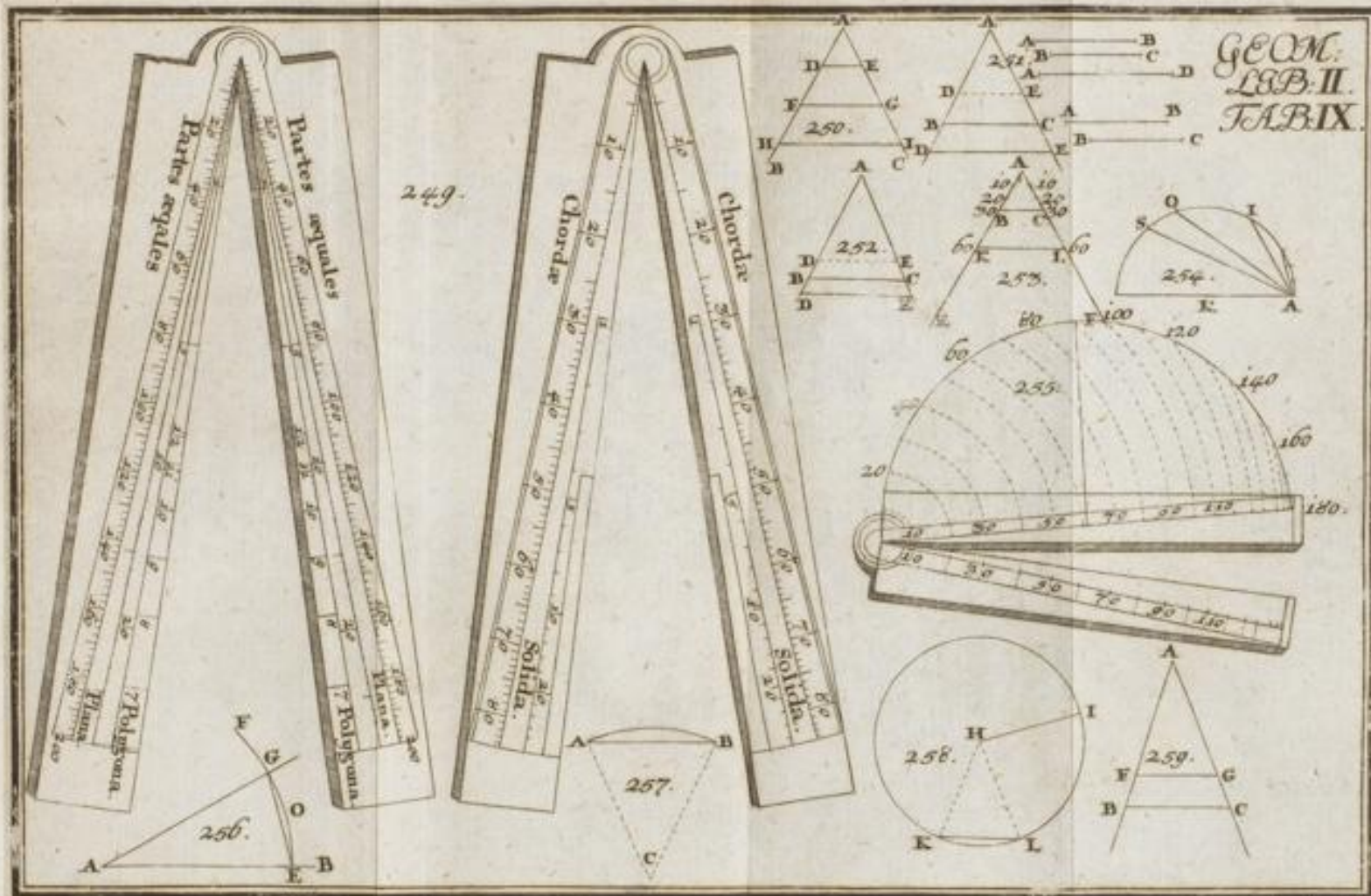




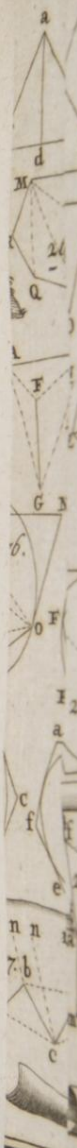
GEOM.  
 LIB. II.  
 TAB. IX.



*F.L. sc. Col.*

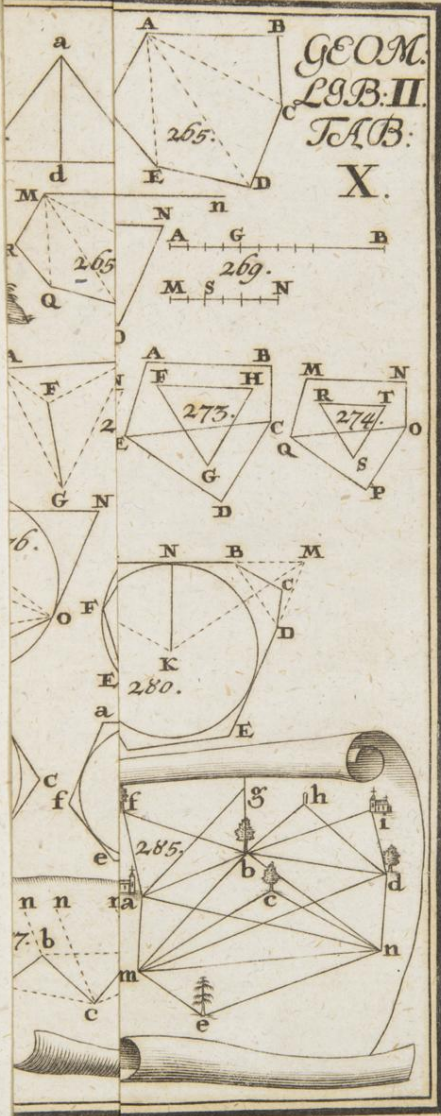






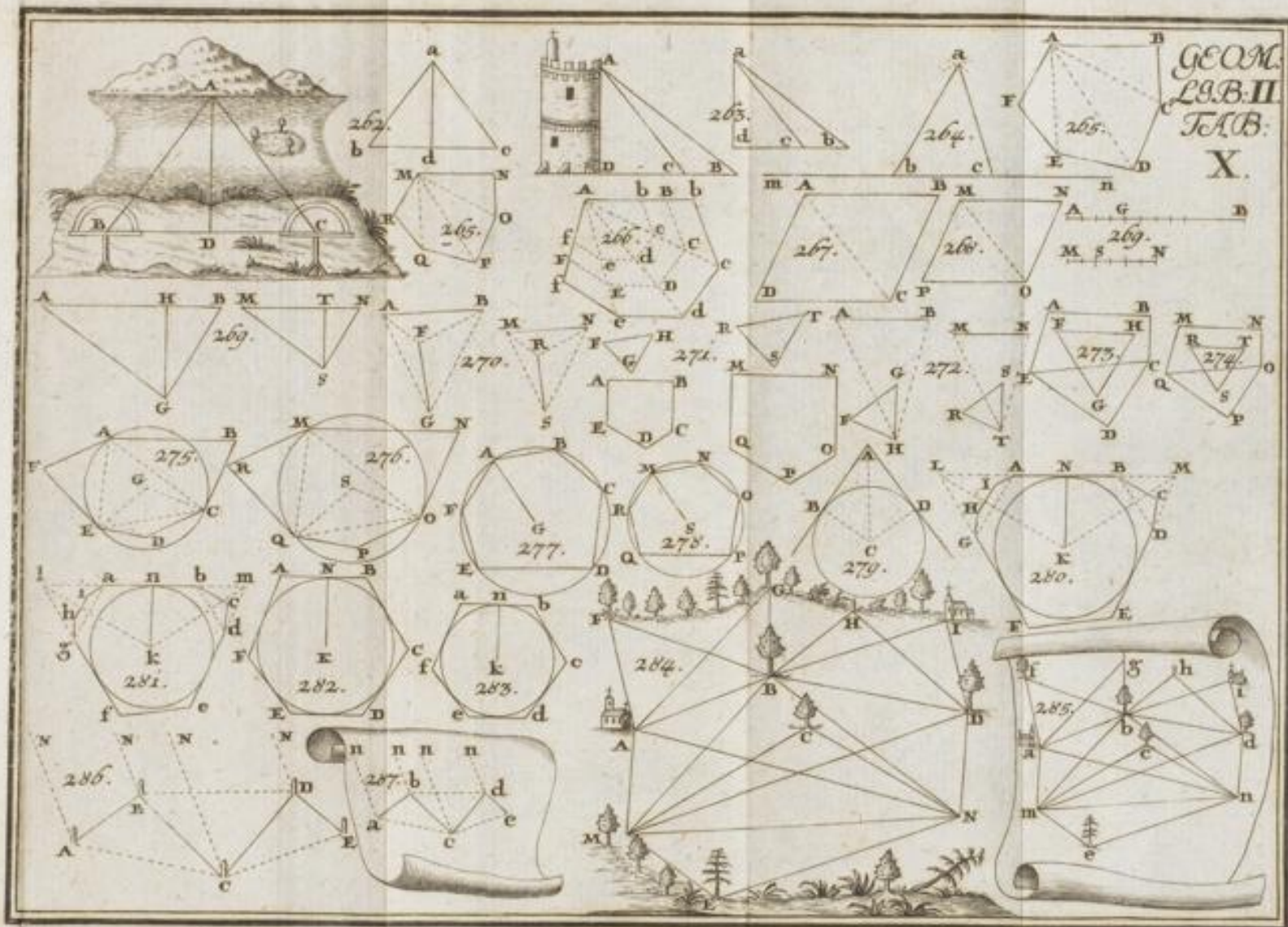
GEOM.  
L. B. II.  
TAB.

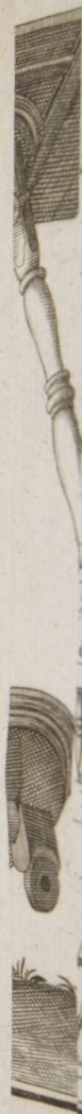
X.





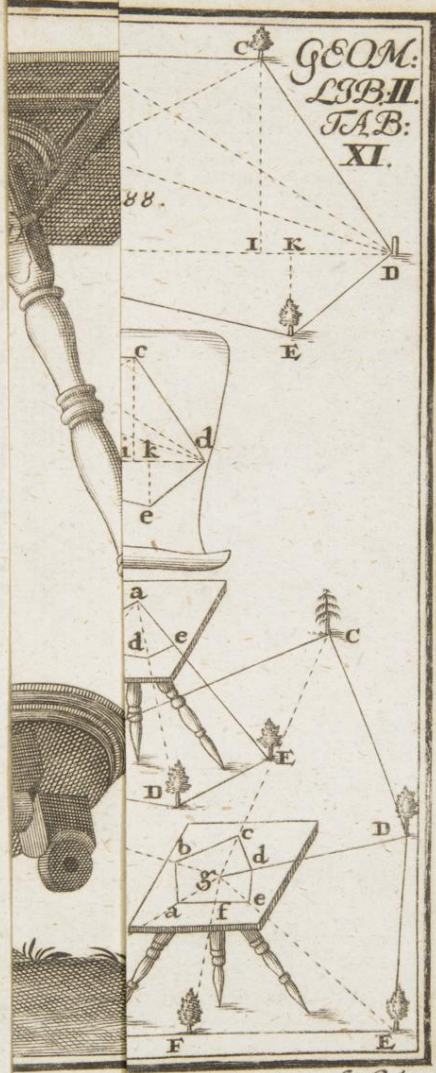
GEOM.  
LIB. II  
TAB.  
X.



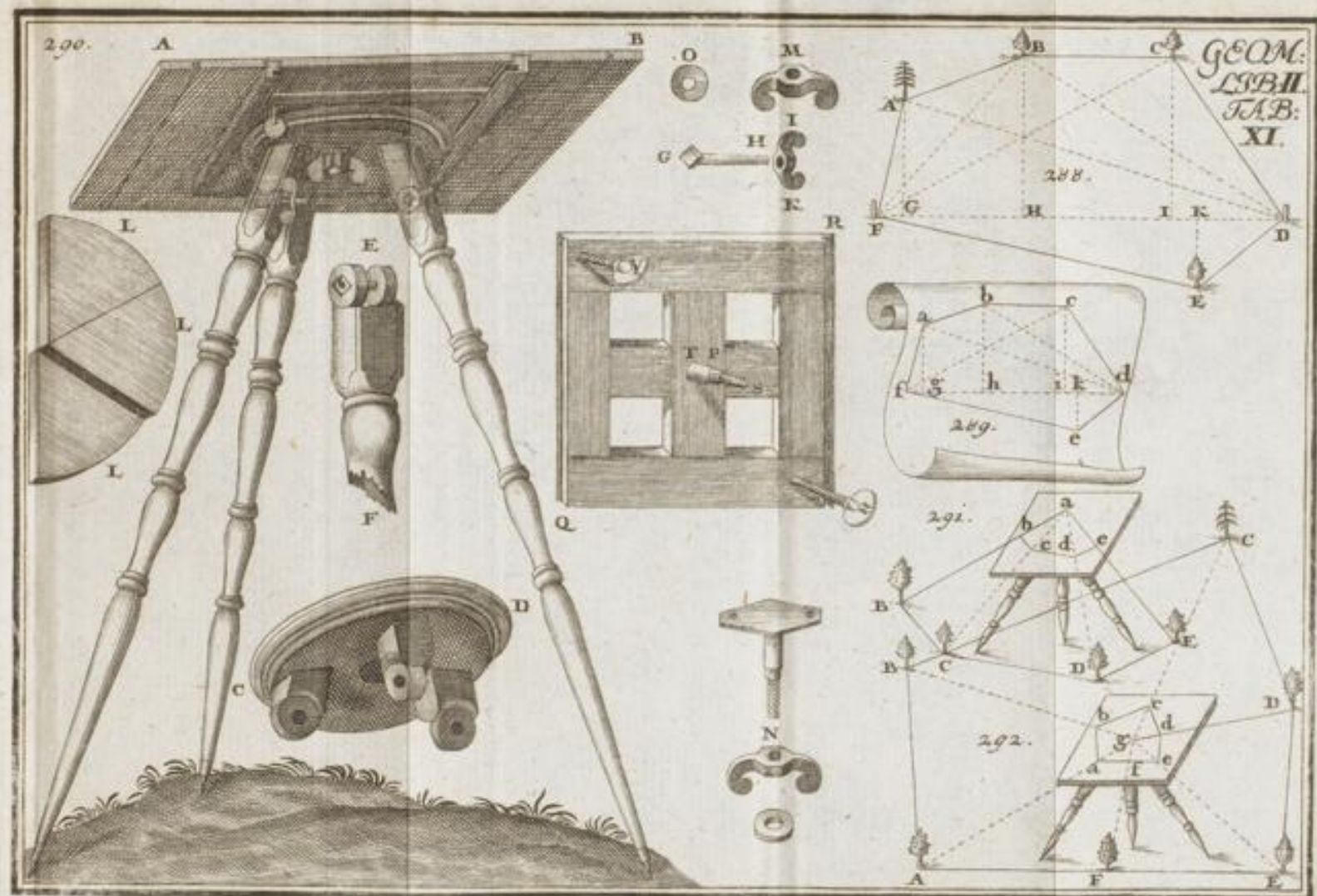




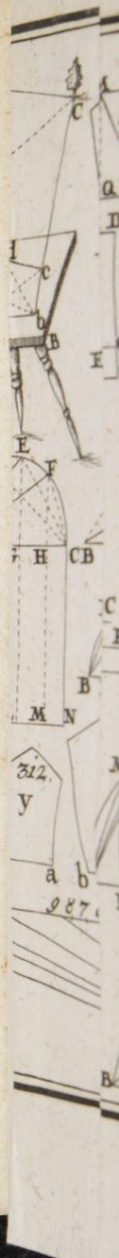
GEOM.  
 LIB. II  
 TAB. B.  
 XI.



Fer: Lang sc: Col:







312.

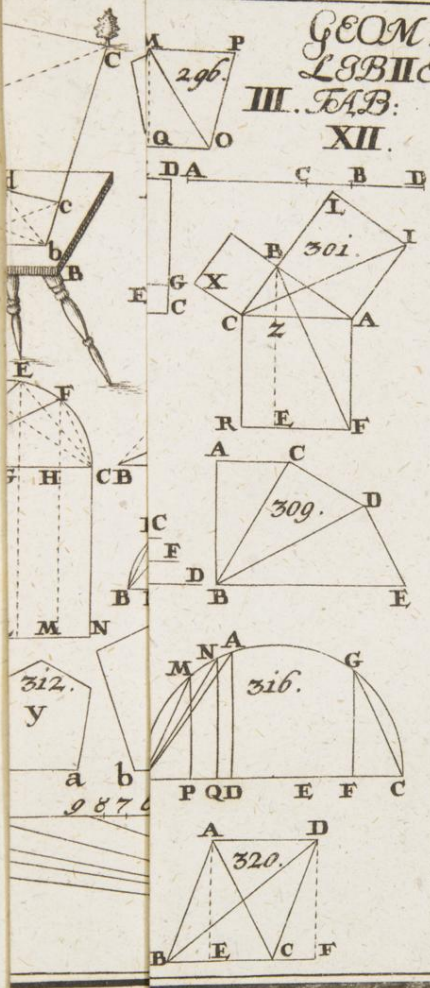
y

a b

287.

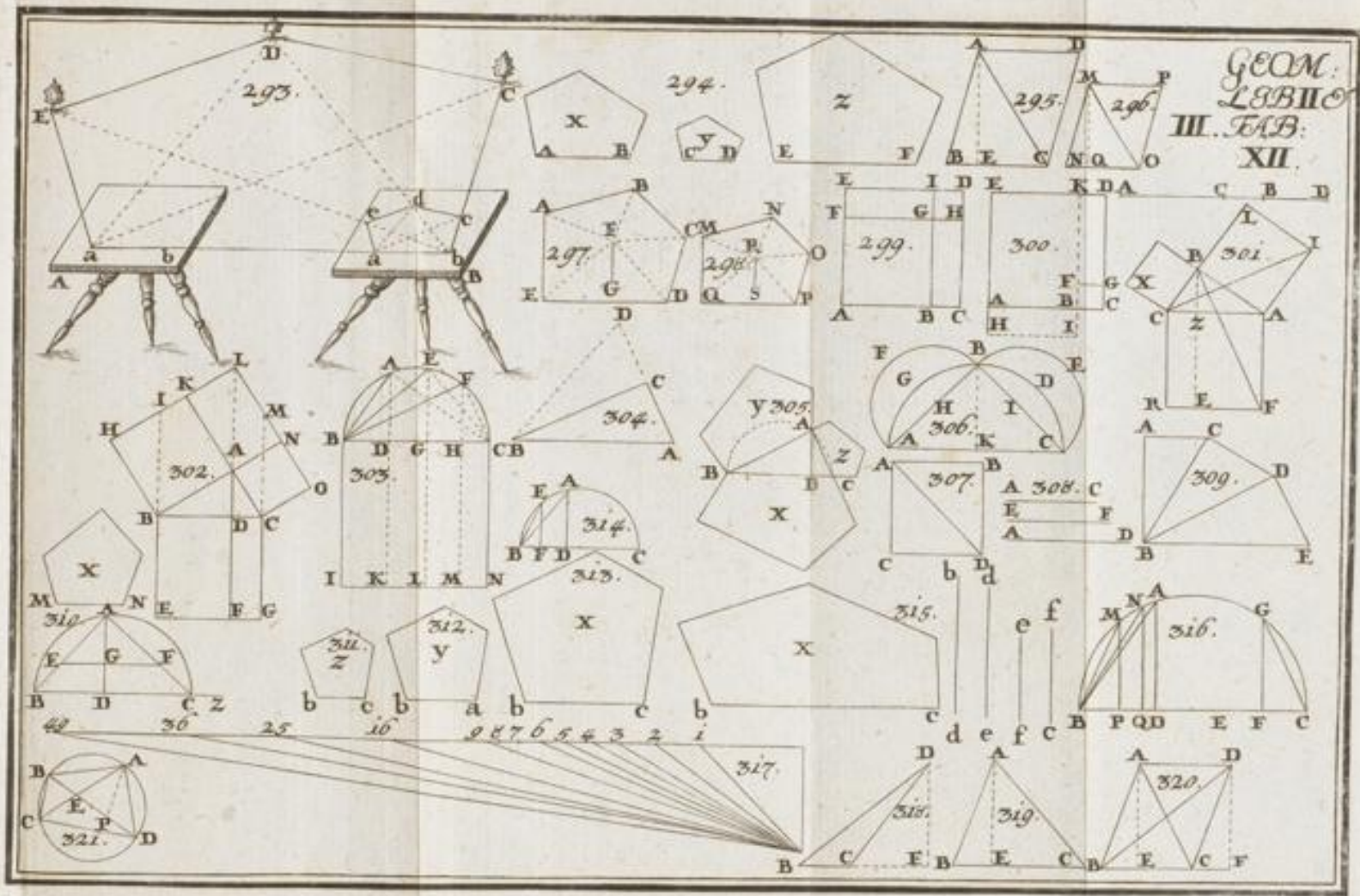
B

GEOM:  
*L. B. III.*  
 III. TAB:  
 XII.





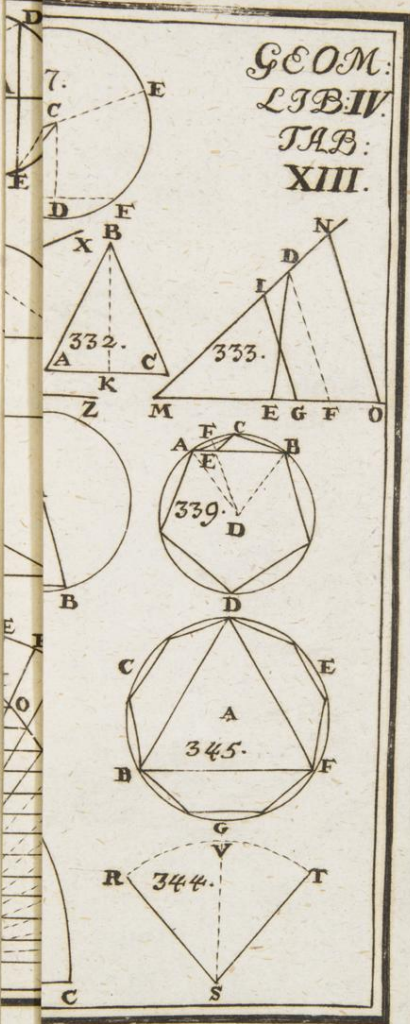
GEOM.  
LIBRO  
III. TAB.  
XII.



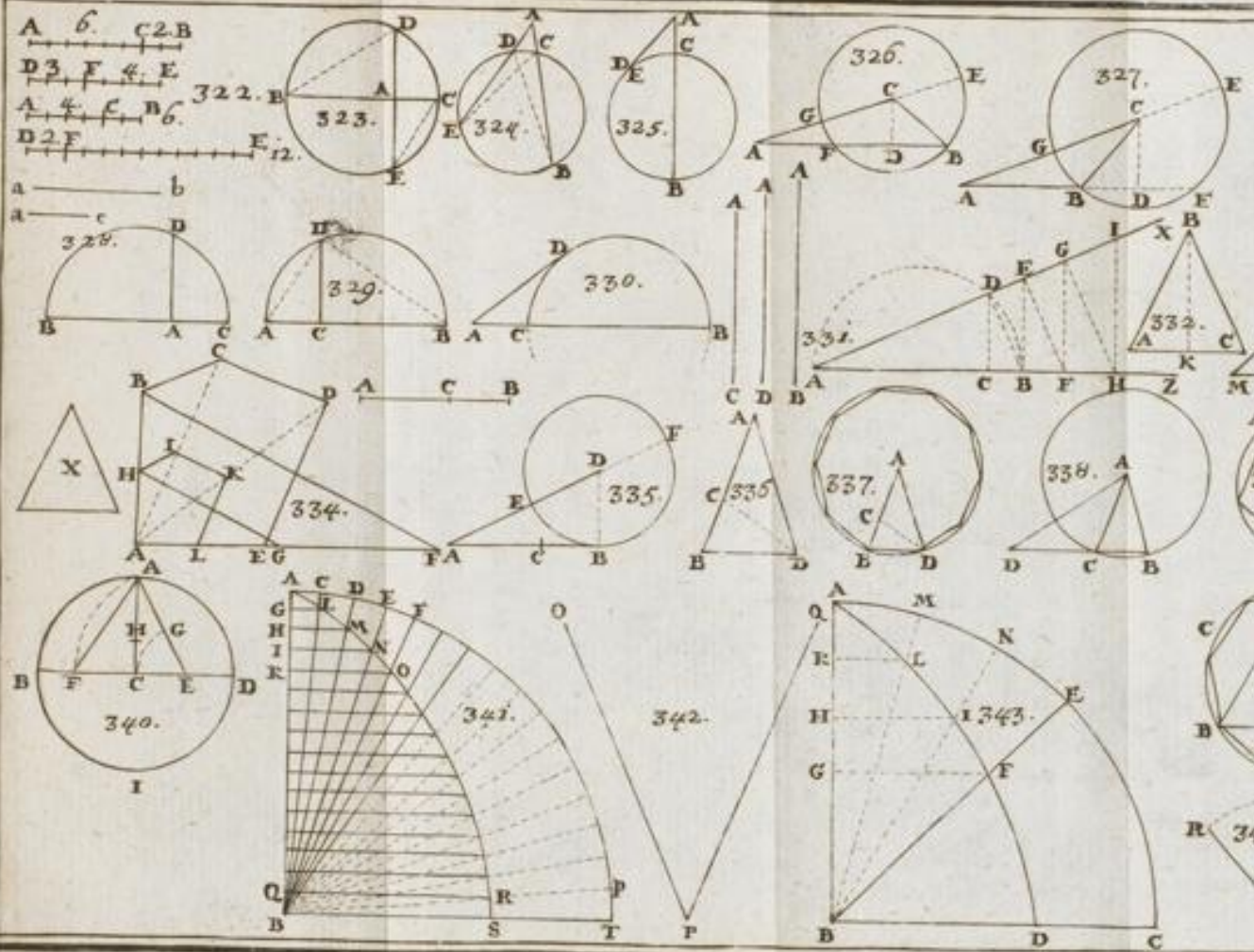




GEOM:  
LIB. IV.  
TAB:  
XIII.



GEOM.  
LIBIV.  
TAB.  
XIII.



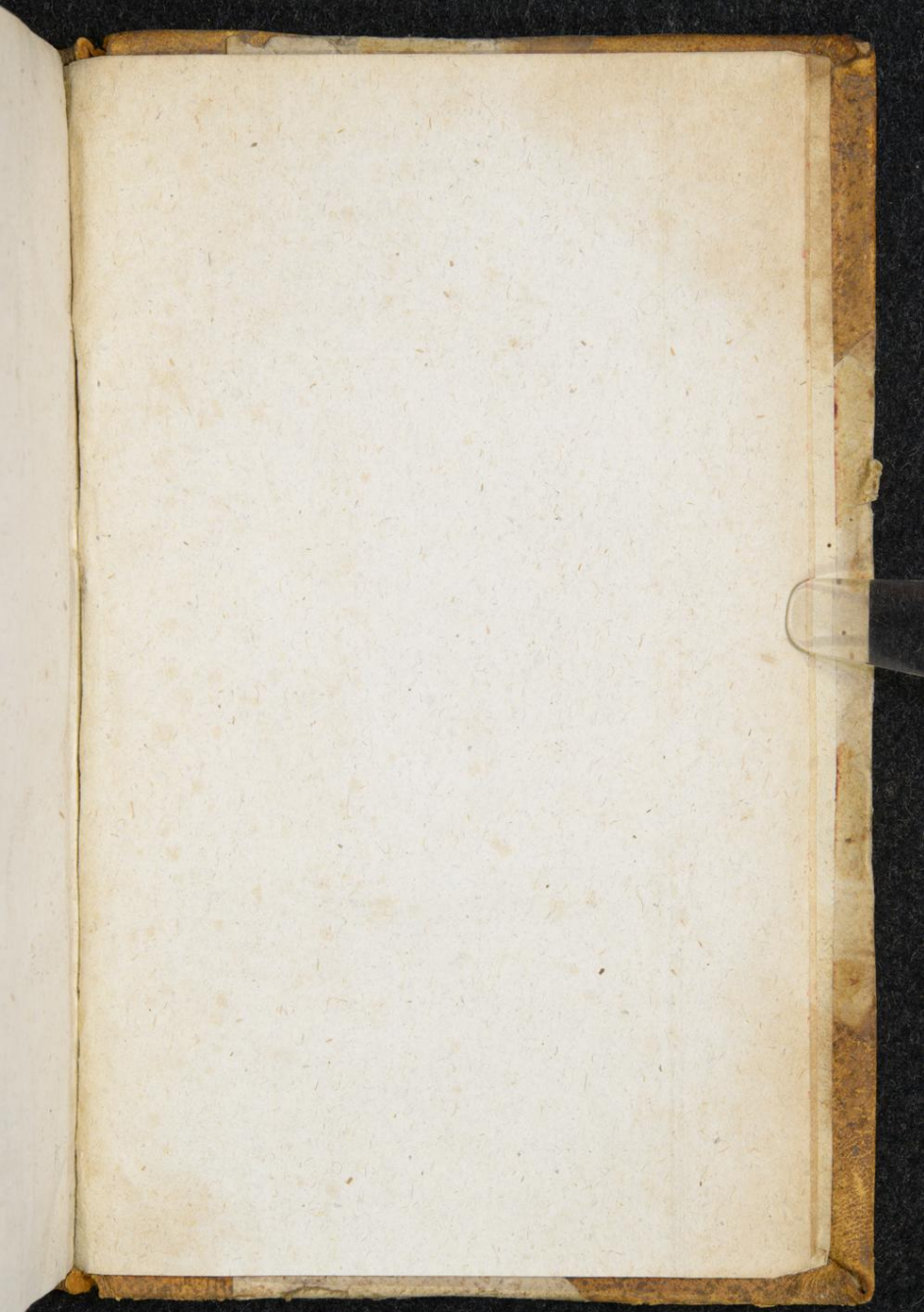
A 6. C 2. B  
D 3. F 4. E  
A 4. C 6. B  
D 2. F 12. E

a — b  
a — c



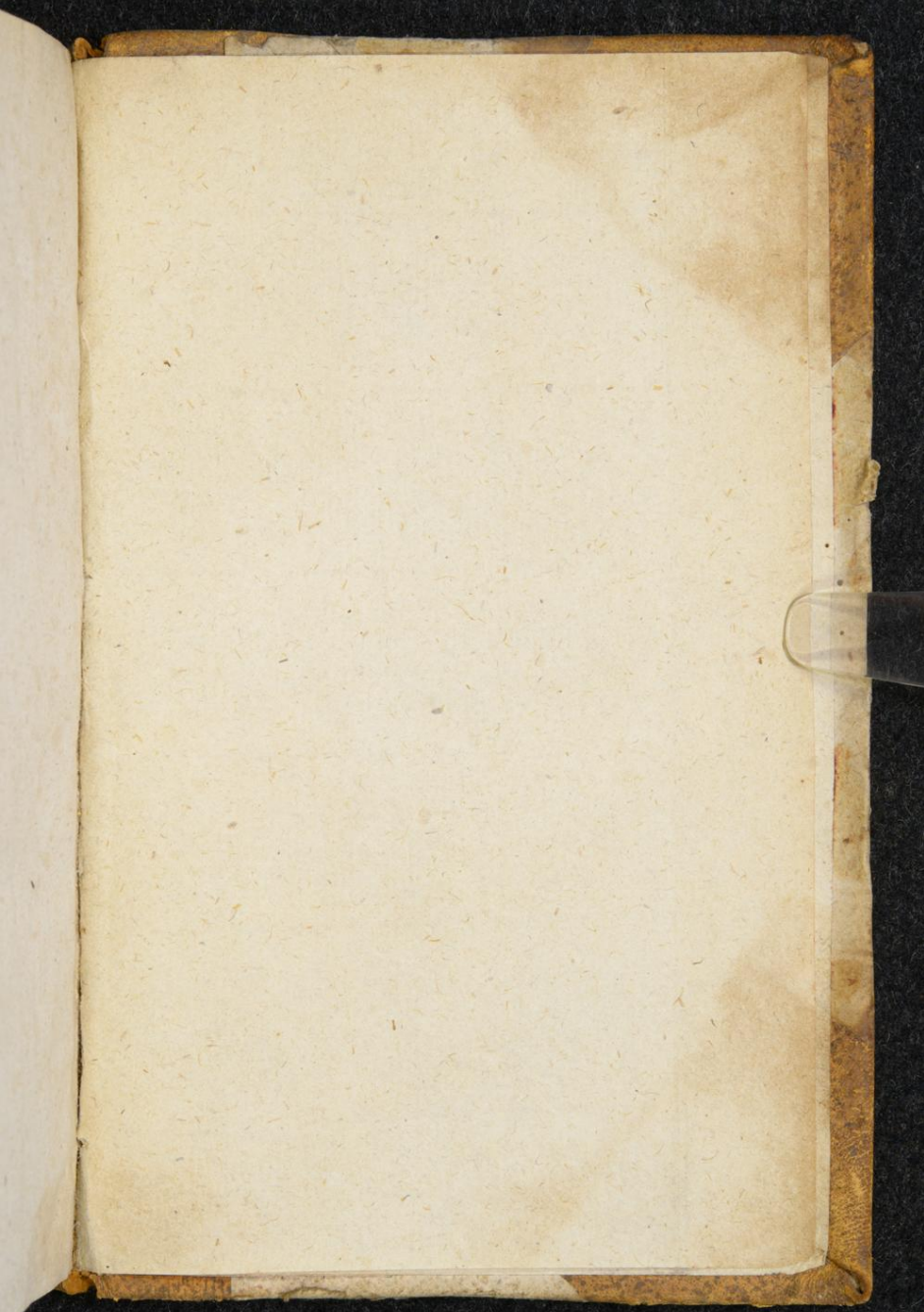


THE UNIVERSITY OF CHICAGO PRESS













# TIFFEN® Gray Scale

© The Tiffen Company, 2007

- A** 1  **R**
- G** 2  **G**
- B** 3  **B**
- M** 4 **5** 6 **M** 8  **W**
- G** 9  **G**
- K** 10  **K**
- C** 11  **C**
- Y** 12  **Y**
- M** 13  **M**
- B** 14 15 16 17 18 19



# TIFFEN® Color Control Patches

© The Tiffen Company, 2007

- Blue**
- Cyan**
- Green**
- Yellow**
- Red**
- Magenta**
- White**
- 3/Color**
- Black**

